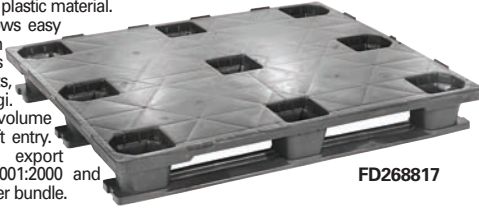


## CLOSED DECK RACKABLE PLASTIC PALLETS

Made of black recyclable plastic material. Smooth surface top allows easy set-up on racks and can be moved directly to sales floor. Resists insects, bacteria and fungi. Reduces freight costs by volume up to 65%. 4-way forklift entry. ISPM15 exempt for export shipping. Meets ISO 9001:2000 and 8611 standards. Sold 4 per bundle.



FD268817

Model	Bottom Skid		Fork	Cap. Lbs.			Price Each	
	W"x D"x H"	Fork		Floor	Rack	1-20	21+	
FD268817	3	48 x 40 x 6	4100	16300	1700	\$31.95	\$29.95	
FD268818	6	48 x 40 x 6	5000	19800	1700	32.95	31.95	

## RACKABLE PLASTIC PALLET

USDA/FDA approved. ISPM15 exempt for export shipping. Fully loaded black recycled high density polyurethane pallets store conveniently on rack or stack four high. 3" x 14 1/2" fork clearance. 3000 lb. capacity when used on pallet rack. Four way entry.



AS LOW AS  
**\$75**

Model	W"x D"x H"	Fork	Cap. Lbs.		Price Each	
			Floor	Rack	1-20	21+
FD473100	48 x 40 x 6	4500	25000	3000	\$79.95	\$75.00

## DOUBLE DECK PLASTIC PALLET

AS LOW AS  
**\$28.50**

Black recyclable plastic material offers durable and cost effective service. Weather resistant construction won't split, rot or mildew. Includes 6 bottom supports. Allows 4-way forklift entry. ISO 8611 tested. ISPM15 exempt for export shipping.



SAME DAY  
IN STOCK  
SHIPMENT

BOTTOM VIEW

Model	W"x D"x H"	Fork	Cap. Lbs.		Price Each	
			Floor	Rack	1-20	21+
FD239866	48 x 40 x 6	3000	7500	2000	\$29.50	\$28.50

## ALUMINUM PALLET

Ideal for food, pharmaceutical and chemical industries, these lightweight aluminum pallets resist rust and withstand pressure washing, steam and scrubbing processes. Reinforced with 3 stringers, they support loads up to 10,000 lbs. Textured non-skid surface keeps loads in place during transport. 2-way fork entry.



INDUSTRIAL  
GRADE  
QUALITY

Model	W"x D"x H"	Fork	Cap. Lbs.		Price Each	
			Floor		1-5	6+
FD652738	42 x 48 x 6	4500	6000		\$263.95	\$245.95
FD652739	48 x 48 x 6	4500	6000		282.95	262.95

## USDA & FDA APPROVED RACKABLE PALLETS

Ideal for double stacking, racking and conveyor use. Strong structural foam construction has a 2,000 lb. rackable capacity. ISPM15 exempt for export shipping. Black is USDA approved. Blue is USDA and FDA approved. Add color suffix: Black (BK) or Blue (BL).



AS LOW AS  
**\$125**

Model	W"x D"x H"	Fork	Cap. Lbs.		Price Each	
			Floor	Rack	1-20	21+
FD652963BK	48 x 40 x 6 3/8	5000	30000	2000	\$132.95	\$125.00
FD652963BL	48 x 40 x 6 3/8	5000	30000	2000	135.95	129.95

## DELUXE DRUM PALLET

Durable polyethylene construction is corrosion and weather resistant. Holds four 55 gallon drums. One side features molded barrel rings for a secure fit. 3 5/8" x 10" fork clearance. USDA/FDA approved. ISPM15 exempt for export shipping. Four way entry.



SAME DAY  
IN STOCK  
SHIPMENT

AS LOW AS  
**\$135**

Model	Drum Cap.	Color	W"x D"x H"	Cap. Lbs.		Price Each	
				Fork	Floor	1-20	21+
FD238939	3	Black	40 x 48 x 5 1/2	4000	30000	\$145.95	\$135.00
FD649138	4	Green	48 x 48 x 5 1/2	4000	30000	195.95	185.95

## CORRUGATED PALLET SHIPPING CONTAINERS



Store or ship bulk materials or master pack smaller cartons in these highly economical pallet-sized corrugated containers. Must be stapled before use. Pallet not included. Sold in bundles of 5.



AS LOW AS  
**\$21.50**  
FD237937

	Inside		Test/ lb.	Wall	CONTAINER		LID	
	L" x W" x H"	Style			Model	Price Each	Model	Price Each
A.	48 x 40 x 36	Gaylord	275	Double	FD237937	\$21.50	FD237938	\$6.10
A.	48 x 40 x 36	Gaylord	200	Single	FD238928	10.25	FD237938	6.10
B.	47 x 39 1/2 x 34-59	Telescoping	200	Single	FD238930	8.25	FD238928	8.95
C.	41 x 28 3/4 x 25 1/2	R.S.C.*	350	Double	FD238931	23.75	---	---
C.	36 x 22 x 22	R.S.C.*	350	Double	FD238932	17.95	---	---

\*R.S.C.=Regular Slotted Container

## PLASTIC CONTAINERS WITH DOLLY

Molded gray plastic bins easily lift from included steel dollies to transport and handle a variety of materials. Great for moving stock, supplies, laundry and other large quantities of bulk items. 600 lb. capacity. Steel dolly features raised edges to retain container during transport. Moves easily on 3" polymer tread casters (2 rigid, 2 swivel). Tapered Containers are nestable when empty.



AS LOW AS  
**\$125**

L" x W"	H"	w/casters	Style	Lid	Model	Price
21 x 14	23 1/2		Straight Wall	No	FD442500	\$125.00
23 x 23	33 1/2		Straight Wall	Yes	FD442503	174.00
23 1/2 x 20 1/2	18 1/2		Tapered Wall	Yes	FD442497	149.00
24 x 22	30 1/2		Straight Wall	No	FD442502	174.00
26 x 22	21 1/2		Tapered Wall	No	FD442498	129.00
27 1/2 x 27 1/2	24 1/2		Tapered Wall	No	FD442499	154.00
28 x 22	20 1/2		Straight Wall	Yes	FD442501	159.00
32 1/2 x 23	24 1/2		Straight Wall	Yes	FD442504	178.00