

### FIBERGLASS SHUTTER-MOUNT EXHAUST FANS

These easy-to-install exhaust fans come fully assembled with a fiberglass automatic shutter and frame with stainless steel hardware for superior resistance to corrosive gases and vapors. The propellers are fiberglass-reinforced polypropylene. Fans include 115 Volt totally enclosed motors and an OSHA-compliant epoxy-coated wire guard. UL and C-UL Listed.

*Note: Not designed for explosive atmospheres or laboratory hood exhausts.*

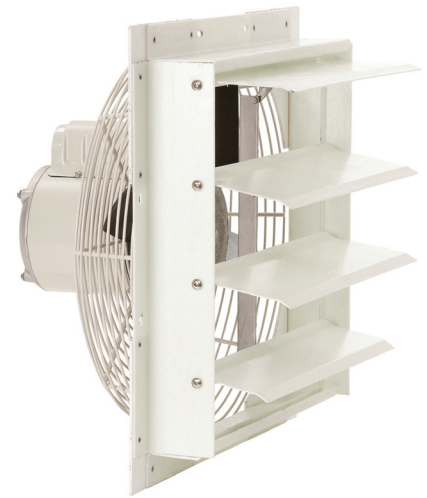
PROPELLER DIA. (IN.)	CFM @ 0.000" SP	CFM @ 0.125" SP	MOTOR RPM	MOTOR HP	SQ. OPENING REQ. (IN.)	ITEM NO.
10	524	379	1550	1/20	10-1/2	<b>CRF 10A</b>
12	1100	799	1625	1/8	13	<b>CRF 12A</b>
16	2005	1678	1625	1/6	17	<b>CRF 16A</b>
18	2790	1961	1075	1/4	19	<b>CRF 18A</b>
20	3642	2838	1075	1/3	21	<b>CRF 20A</b>
24	4876	4197	1075	1/2	25	<b>CRF 24A</b>



**Shutter-Mount  
Exhaust Fan -  
SMF 12A**



**Guard-Mount  
Exhaust Fan -  
GMF 12A**



**Fiberglass  
Shutter-Mount  
Exhaust Fan -  
CRF-16A**