

INSTALLATION INSTRUCTIONS

ALUMINUM MOTORIZED HAT CHANNEL DAMPER

MODEL ACD

Description

The Extruded Aluminum motorized hat channel dampers may be used for exhaust or supply applications, in either a vertical or horizontal installation. The Hat Channel Frame may be installed in walls, curbs, or ductwork. The TPV blade seals and stainless steel jamb seals provide low leakage. The damper comes with a 100-240 VAC 50/60 Hz actuator with internal spring return in case of loss of power.

Installation

ENSURE STRUCTURAL INTEGRITY OF WALL BEFORE BREACHING.

1. Cut opening required for correct damper size.
2. Do not force the damper into opening.
3. Damper must be installed square and free from racking. Damper must operate freely.
4. Follow the General Safety information and Wiring Diagram. Wire damper motor as illustrated.

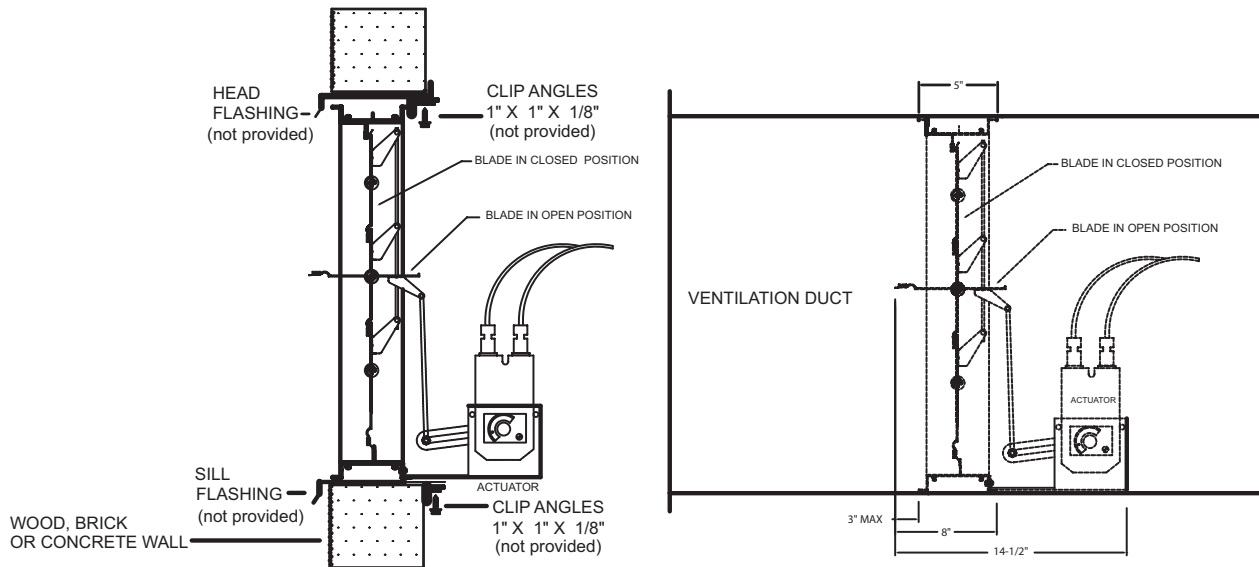


Figure 1 - Wall and Duct Installation

Note: Caulking, mounting hardware or flashing materials are not supplied with the damper.

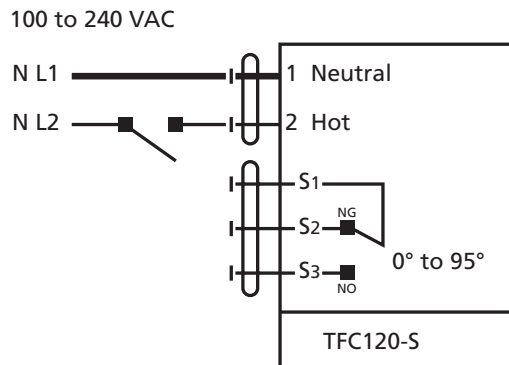


Figure 2 - Wiring Diagram

General Safety Information

1. Follow all local electrical and safety codes, as well as the National Electrical Code (NEC) and the Occupational Safety and Health Act (OSHA) in the United States.
2. Motor must be securely and adequately grounded. This can be accomplished by wiring with a grounded, metal-clad raceway system, by using a separate ground wire connected to the bare metal of the motor frame, or other suitable means.

⚠ WARNING *Always disconnect power source before working on or near a motor or its connected load. If the power disconnect point is out-of-sight, lock it in the open position and tag to prevent unexpected application of power.*

3. Protect the power cable from coming in contact with sharp objects.
4. Do not kink power cable and never allow the cable to come in contact with oil, grease, hot surfaces, or chemicals.

5. Make certain that the power source conforms to the requirements of your equipment.

⚠ WARNING *To avoid risk of electrical shock, more than one disconnect switch may be required to de-energize the device for servicing.*

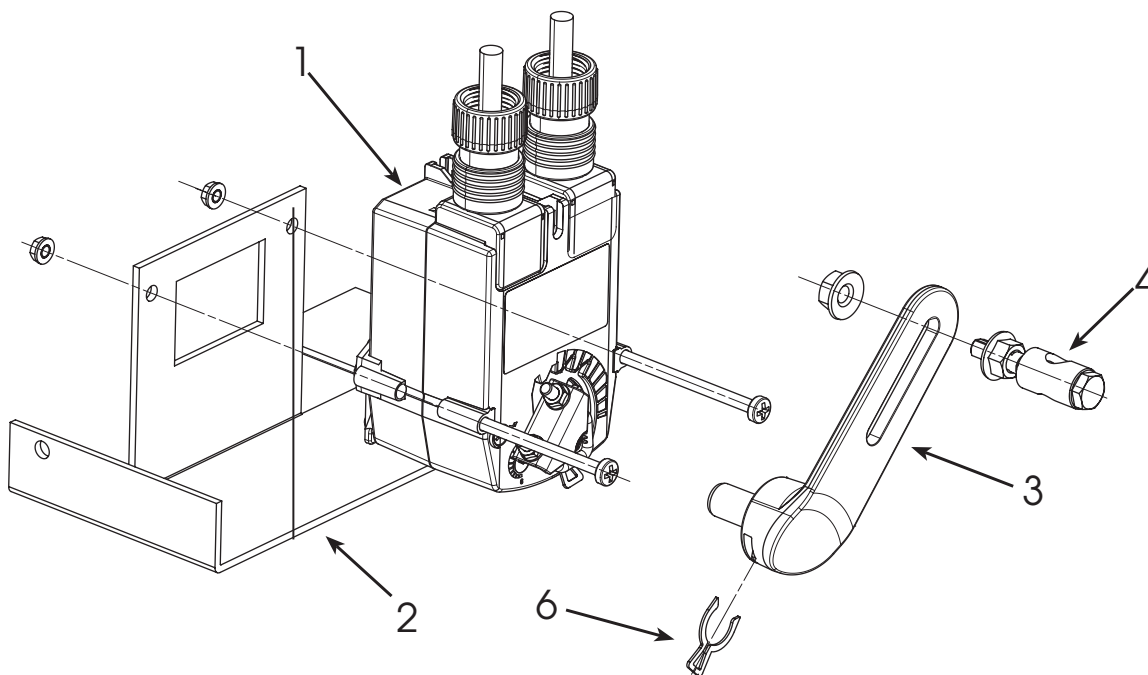


Figure 3 – Repair Parts Illustration for Motorized Dampers

Motor Parts List

Ref. No.	Description
1	50/60Hz Motor, 100 to 240v
2	Motor bracket
3	*Motor crankarm
4	*Swivel ball joints
5	*Connecting rod (Not Shown)
6	*Retaining Clip

LIMITED WARRANTY

All products manufactured are warranted by Air Conditioning Products Company (ACP) to be free from original defects in workmanship for a period of one year from date of shipment, under conditions of normal use and service. ACP will replace or repair any defective parts upon return to our plant, freight prepaid. This limited warranty will, in no way, include the payment of labor charges for field replacement of defective parts, installation, repairs of adjustments, or any other work done. Back charges will not be accepted for any reason unless ACP has given prior written permission, nor will ACP be responsible for consequential damages of any character, no limited warranty expressed or implied will supersede the foregoing.

Manufactured for Air Conditioning Products Co.
 30350 Ecorse Road • Romulus, MI 48174
 acpshutters.com