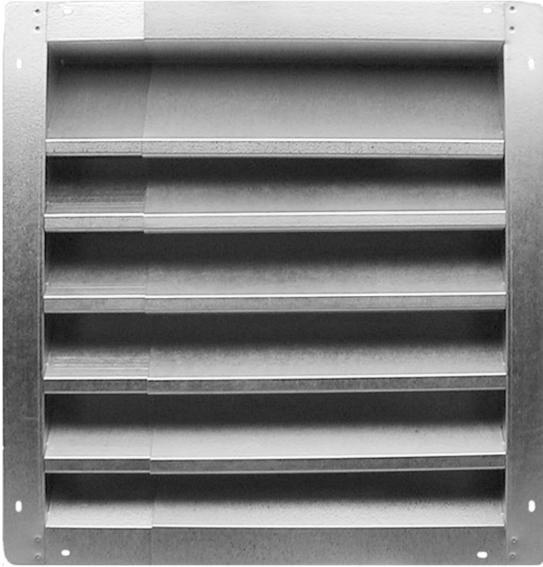


INSTALLATION INSTRUCTIONS

**ADJUSTABLE FRAME LOUVERS  
 FOR INTAKE/EXHAUST**

**Please read and save these instructions. Read carefully before attempting to assemble, install, operate or maintain the product described. Protect yourself and others by observing all safety information. Failure to comply with instructions could result in personal injury and/or property damage! Retain instructions for future reference.**



**Description**

The Adjustable Frame Intake/Exhaust Louvers are fabricated from galvanized steel or .040 aluminum. Both galvanized and aluminum products are 4" deep with 2" face flange and come with rear mounted bird screen. Fixed height is standard and width is adjustable. Louvers have end stops to help prevent separation of sections.

Louvers may be used in HVAC intake and exhaust systems and many air moving applications. They are usually installed in openings of interior or exterior walls, roof penthouses and ductwork.

**General Safety Information**

**WARNING: USE CAUTION WHEN HANDLING SHEET METAL PRODUCTS. PROTECTION SHOULD BE USED TO AVOID CONTACT WITH SHARP EDGES OR INJURY MAY OCCUR.**

**Unpacking**

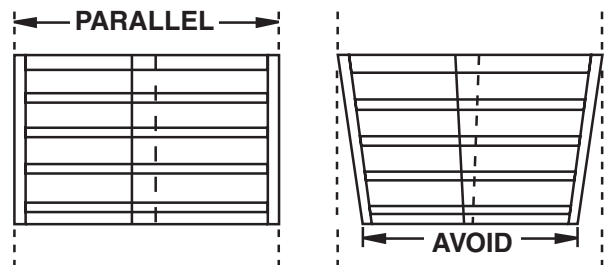
When unpacking, carefully remove louver from carton and inspect for any damage that may have occurred during transit.

**Installation**

The Adjustable Frame Intake/Exhaust Louvers are galvanized steel or mill finish aluminum, and may be painted, provided proper surface pre-treatment is performed prior to paint application. Note that unit must be adjusted to its final width prior to painting. Refer to paint manufacturers instructions prior to pretreating and painting.

1. To install the louver, first prepare the wall or duct opening to accept the louver. The wall opening should be 1/4" to 1/2" larger than the final fixed dimension of the louver. Make sure that the opening is plumb and level, and sufficient structural support is provided, as the louver is not load bearing.
2. After the opening is prepared, measure its width by height and, on the ground, adjust the louver to the required opening width.
3. Carefully extend the louvers to the desired width. Take care not to use excessive force, as it is possible to overcome the stops. Open the louver evenly to prevent jamming. Do not exceed maximum width dimension. (See Figure 1)

**Figure 1**



**NOTE:** When louver is adjusted to proper width, both jambs must be parallel.

# ADJUSTABLE FRAME LOUVERS FOR INTAKE/EXHAUST

## Installation (continued)

4. Once the unit is adjusted to the desired width, drill each louver on rear, 1" from the seam, and attach screen and both louver sections using provided hardware. (See Figure 2)

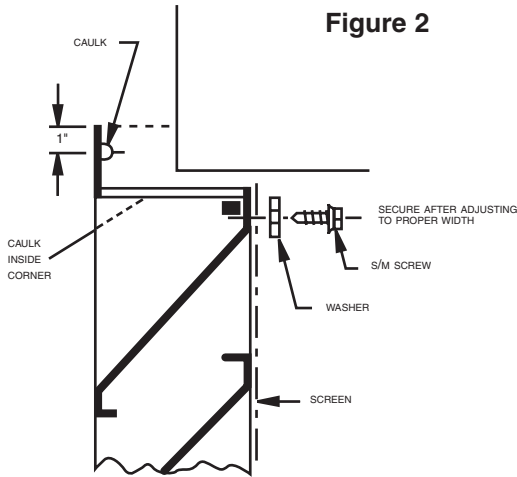


Figure 2

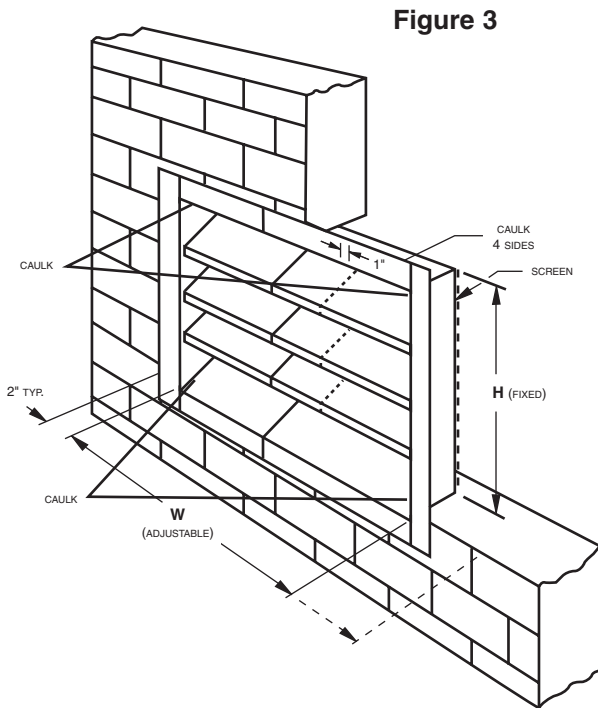


Figure 3

5. Caulk louvers on rear of face flange on top, bottom and sides and inside top and bottom corners prior to installation to prevent water from entering the building as shown in Figures 2 and 3.

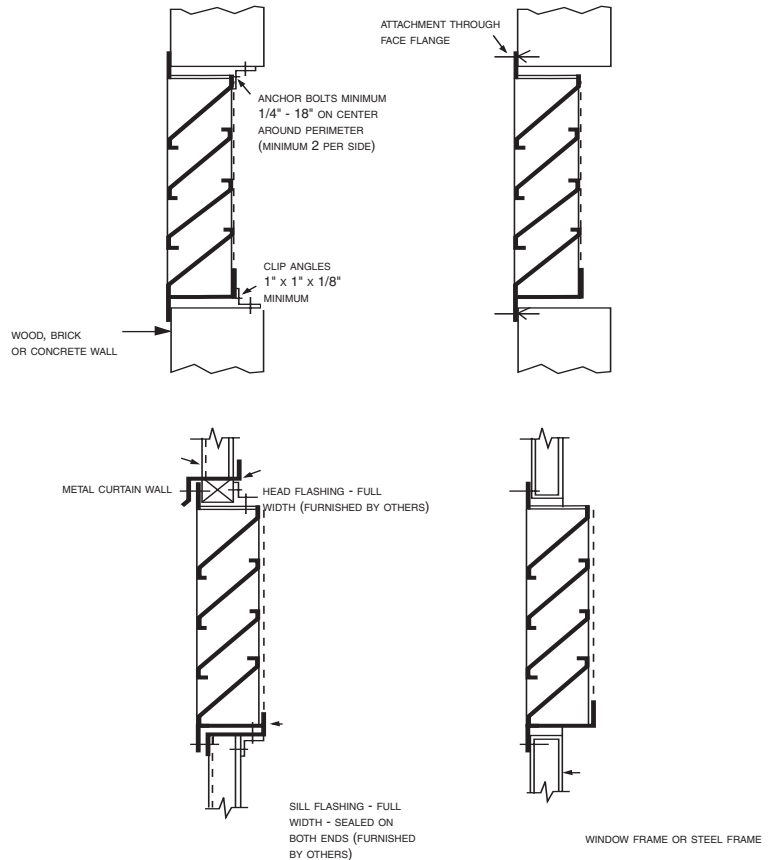
6. Secure the louver into opening selecting the most suitable method as shown in Figure 4.

7. Use corrosion protected fasteners to secure the louver in the opening. Once louver is adjusted to the desired width, drill top and bottom through both sections. Hardware should be spaced no more than 18" apart, and all sides should have a minimum of two fasteners.

8. If installation requires the louver to be connected to a duct system, then any ductwork, fans or dampers should be supported by the building structure, and should be sealed to the louver.

## Installation Methods

Figure 4



### LIMITED WARRANTY

All products manufactured are warranted by Air Conditioning Products Company (ACP) to be free from original defects in workmanship for a period of one year from date of shipment, under conditions of normal use and service. ACP will replace or repair any defective parts upon return to our plant, freight prepaid. This limited warranty will, in no way, include the payment of labor charges for field replacement of defective parts, installation, repairs of adjustments, or any other work done. Back charges will not be accepted for any reason unless ACP has given prior written permission, nor will ACP be responsible for consequential damages of any character, no limited warranty expressed or implied will supersede the foregoing.

Manufactured for Air Conditioning Products Co.  
30350 Ecorse Raod • Romulus, MI 48174

NOTE: CAULKING, CLIP ANGLES, MOUNTING HARDWARE OR FLASHING MATERIALS ARE NOT SUPPLIED WITH LOUVER

Vertical Section

## Maintenance

Periodically clean the screen to prevent buildup of dust and accumulated dirt which could reduce the air flow.