

Catalog Number
Notes
Type

FEATURES & SPECIFICATIONS

INTENDED USE — SBL LED wraparound provides a digital lighting platform to deliver general ambient lighting for surface-mount applications. The SBL provides a similar look to that of an existing fluorescent wrap with all of the excellent benefits of LED: energy savings, long life, and maintenance savings. Ideal for closets, storage rooms, and offices.

CONSTRUCTION — Linear side prisms control brightness, pyramidal bottom prisms minimize lamp image. Continuous side flanges on fixture body provide light trap and continuous diffuser support to prevent accidental opening and simplify maintenance. Full depth, white enamel end plates.

Die-formed from code gauge cold-rolled steel. Channel cover snaps into place without the use of tools. Full end cap factory installed to reduce job site labor.

OPTICS — The translucent white diffuser reduces glare and pixilation without impacting performance.

ELECTRICAL — Long-life LEDs, coupled with high-efficiency drivers, provide superior quantity and quality of illumination for extended service life. 90% LED lumen maintenance at 60,000 hours (L90/60,000). The LEDs have a CRI of 82.

eldoLED driver options deliver choice of dimming range and choices for control, while assuring flicker-free, low-current inrush, 89% efficiency and low EMI.

Pair the SBL with the fixture mount Sensor Switch LSXR sensor for additional energy savings when the space is unoccupied. The LSXRHL sensor dims the fixture down to a low-level setting when there is no occupancy. This option is ideal for stairwells, back rooms, and closets due to the low occupancy level in those spaces.

Optional nLight® embedded controls continuously monitor system performance, allow for constant lumen management / compensation function, facilitate simple "plug-and-play" network and controls upgrading via Cat-5 cable. Ballast disconnect provided where required to comply with US and Canadian codes.

LISTINGS — CSA certified to meet U.S. and Canadian standards. DesignLights Consortium® (DLC) qualified product. Not all versions of this product may be DLC qualified. Please check the DLC Qualified Products List at www.designlights.org/QPL to confirm which versions are qualified.

Damp listed.

WARRANTY — 5-year limited warranty. Complete warranty terms located at www.acuitybrands.com/CustomerResources/Terms_and_conditions.aspx

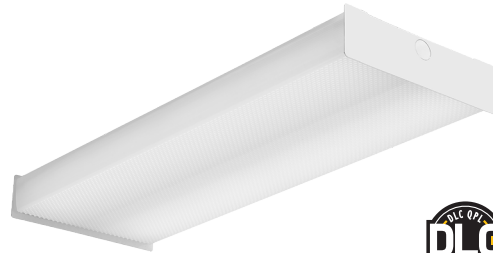
Note: Actual performance may differ as a result of end-user environment and application.

All values are design or typical values, measured under laboratory conditions at 25 °C.

Specifications subject to change without notice.

Square-basket LED Wraparound

SBL2



2'
LED



eldoLED®

ORDERING INFORMATION

Lead times will vary depending on options selected. Consult with your sales representative.

Example: SBL2 20L EZ1 LP840

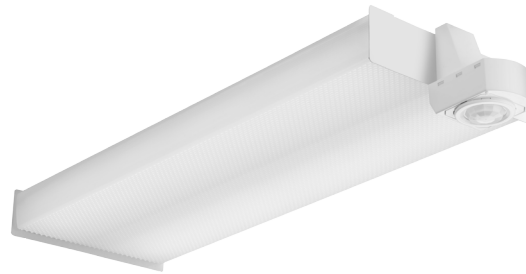
SBL2										
Series	Lumens ¹	Voltage	Driver	Color temperature	Control	Finish				
SBL2 2' LED wrap	20L	(blank) MVOLT 347 347V ²	EZ1 eldoLED dims to 1%, 0-10V SLD Step-level dimming ³ EOHN eldoLED non-dimming, on/off ³	LP830 3000 K LP835 3500 K LP840 4000 K LP850 5000 K	(blank) No controls N80 nLight with 80% (L80) lumen management N80EMG nLight with 80% (L80) lumen management for use with generator supply EM power N100 nLight without lumen management N100EMG nLight without lumen management for use with generator supply EM power LSXRHL Sensor Switch® fixture mount sensor with High/Low occupancy operation ⁴ LSXR10 Sensor Switch fixture mount sensor with on/off occupancy operation	(blank) White				

Notes

- 1 Approximate lumen output.
- 2 Not available with SLD driver.
- 3 Not available with control options.
- 4 Dims to approximately 10% light output when unoccupied. See sensor details on next page.

SBL2 LED Wraparound

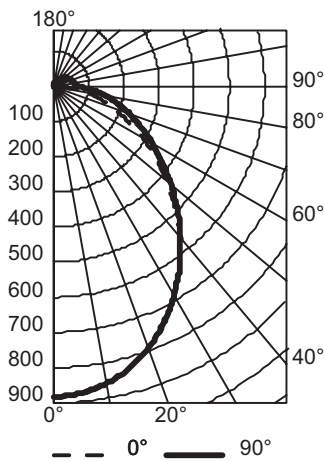
Performance Data				
Lumen	Package	Lumens	Input Watts	LPW
20L	LP830	2,360.6	23	102.6
20L	LP835	2,409.4	23	104.8
20L	LP840	2,428.8	23	105.6
20L	LP850	2,459.7	23	106.9



Sensor Switch LSXRHL Sensor	
Lens type:	10 - Low Mount 360° coverage
Dimming:	HL - High/Low Occupancy operation
Min Dim Level:	3V - approximately 10% light output when unoccupied
Time Delay:	5M - 5 minutes

PHOTOMETRICS

SBL2 20L EZ1 LP840, 2428.8 delivered lumens, test no. LTL27400P2, tested in accordance to IESNA LM-79.



CP Summary

	0°	90°
0°	883	883
5°	878	877
15°	832	830
25°	744	741
35°	624	626
45°	488	498
55°	352	377
65°	232	274
75°	134	188
85°	45	107
90°	2	68

Coefficients of Utilization

pc	pw	Coefficients of Utilization										
		80%			70%			50%				
		70%	50%	30%	50%	30%	10%	50%	30%	10%		
0	118	118	118	114	114	114	108	108	108			
1	107	102	97	99	95	91	93	90	87			
2	97	89	82	86	80	74	82	76	72			
3	89	78	70	76	68	62	72	66	60			
4	81	69	61	67	59	53	64	57	52			
5	75	62	53	61	52	46	58	50	45			
6	69	56	47	55	46	40	52	45	39			
7	64	51	42	50	42	36	48	40	35			
8	60	47	38	46	38	32	44	37	31			
9	56	43	35	42	34	29	40	33	28			
10	53	40	32	39	31	26	37	31	26			

Zonal Lumen Summary

Zone	Lumens	% Lamp	% Fixture
0° - 30°	658	27.1	27.1
0° - 40°	1048	43.2	43.2
0° - 60°	1756	72.3	72.3
0° - 90°	2271	93.5	93.5
90° - 120°	104	4.3	4.3
90° - 130°	127	5.2	5.2
90° - 150°	152	6.2	6.2
90° - 180°	157	6.5	6.5
0° - 180°	2429	100.0	100.0

MOUNTING DATA

Suspension Kit Ceiling Types: F1 for use with most T-bar and screw slot grid ceiling applications. Designed for on-grid and off-grid installations.

F2 for use with recessed or surface-mount horizontal J-box applications.

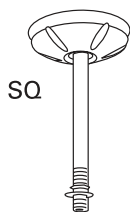
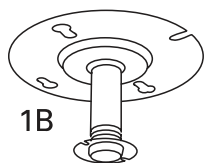
For unit or row installation; surface or suspend mounting.

Individual installation — One double-stem or two single-stem hangers required.

For aircraft cable, one STACG_, STACGF_, or STACGE_ required for each suspension point.

Note: 2' configurations with emergency option cannot be stem mounted.

See ACCESSORIES below for hanging devices.



DIMENSIONS

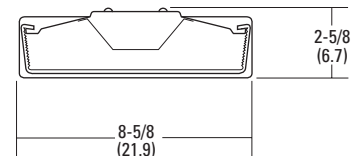
All dimensions are inches (centimeters) unless otherwise noted.

Specifications

Length: 24 (61.0)

Width: 8-5/8 (21.9)

Depth: 2-5/8 (6.7)



All dimensions are inches (centimeters) unless otherwise indicated.