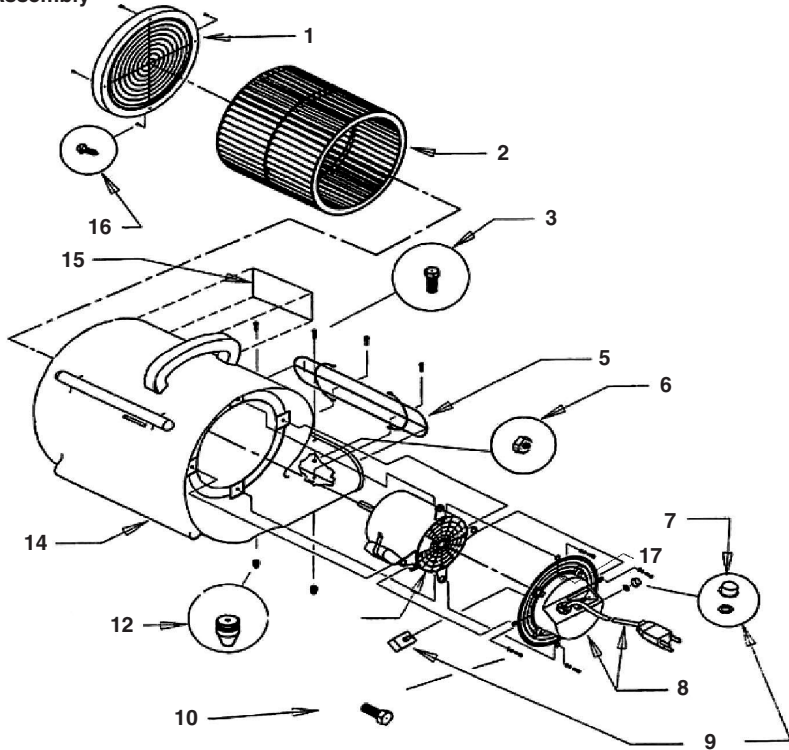


Air Mover Assembly



Item	Part No.	Description	Qty.	Item	Part No.	Description	Qty.
1	233601	Guard, Fan Slide	1	10	962068	Bolt - Flange 1/4 - 20 x 5/8	4
2	233090	Blower Wheel	1	11	235202	Motor 3/4 HP	1
3	930014	Rivet		12	233801	Grommet - Rubber	2
5	233602	Front Guard	1	14	234240	Housing - Blower	1
7	235045	Knob	1	15		Label	1
8	233603	Guard, Black Cord	1	16	962200	Screw (8) 15 x 5/8	4
9	238002	Switch - 4-position	1	17	231301	Circuit Breaker	1

WARRANTY

1 Year Limited Warranty on complete unit. When servicing, use an authorized retailer or representative only. Use only identical replacement parts. To prevent electrical shock: Always remove the electrical plug from the electrical outlet before performing any repairs, maintenance or cleanup.



11 Harbor Park Drive Port Washington, NY 11050



Model 261031

Three-Speed Air Mover

OPERATION MANUAL



Customer Service 1-800-645-2986

globalindustrial.com

READ ALL WARNINGS & INSTRUCTIONS CAREFULLY BEFORE OPERATING!

This manual contains important information regarding the use and safe operation of the 3 Speed Air Mover. Follow the recommendations outlined in this manual to ensure years of satisfactory service from your unit.

WARNING

TO REDUCE THE RISK OF FIRE, ELECTRIC SHOCK, OR INJURY:

- Improper connection of the equipment grounding conductor can result in a risk of fire, electrical shock or personal injury. Always use a three-wire electrical conductor system. For protection against electrical shock, use a circuit that is protected by a ground fault circuit interrupter (GFCI protection). Check with a qualified electrician or service engineer if you are unsure as to whether your outlet is properly grounded. Do not use a unit with a damaged cord or plug.
- Do not use or store this machine in areas involving fuels, grain dust, solvents, thinners or other flammable materials and vapors. Do not use flammables to clean this machine.
- To avoid electrical shock, do not expose the unit to rain. For use with indoor storage only. Do not expose the unit to freezing temperatures. Do not immerse or use this unit in standing water.
- Do not move or carry the unit when it is turned on. Do not pull or carry unit by the cord, do not use cord as a handle, do not close a door on the cord or pull cord around sharp edges or corners. Keep cord away from heated surfaces. Do not unplug unit by pulling on cord. To safely unplug unit, grasp plug and not the cord. Do not handle plug or air mover with wet hands.
- Do not obstruct openings or place any objects into openings on the unit. Keep unit free from dust, lint, hair and anything that may reduce air flow. Keep hair, loose clothing, fingers and all parts of the body away from openings and moving parts.
- Turn off all controls before unplugging.
- Operate unit on a level and stable surface to prevent it from falling and reduce risk of possible injury or damage.
- Do not drop or throw the unit. Treatment of this type can cause damage to the components and create a serious, hazardous risk.

OPERATION

Plug your air mover into a standard grounded outlet with the correct voltage and amperage. If you are unsure about the outlet, contact your supervisor. Turn on the switch and check that the unit operates properly before letting it run for extended periods.

MAINTENANCE

- Inspect the electrical cord and wiring for damage or discoloration
- Inspect for loose fasteners
- Clean screens on the side and front of the unit
- Listen for abnormal sounds
- Keep unit clean

PERIODIC MAINTENANCE

Use compressed air or a vacuum to remove lint and other debris from the motor, screen and blower wheel. Do not use a pressure washer to clean the unit.

GROUNDING INSTRUCTIONS

This machine must be grounded. If it should malfunction or break down, grounding provides a path of least resistance for electric current to reduce the risk of electric shock. This machine is equipped with a cord having an equipment-grounding conductor and grounding plug. The plug must be inserted into an appropriate outlet that is properly installed and grounded in accordance with all local codes and ordinances.

WARNING

Improper connection of the equipment-grounding conductor can result in a risk of electric shock. Check with a qualified electrician or service person if you are in doubt as to whether the outlet is properly grounded. Do not modify the plug provided with the machine - if it will not fit the outlet, have a proper outlet installed by a qualified electrician.

This machine is for use on a nominal 120-volt circuit, and has a grounded plug that looks like the plug illustrated in figure A. A temporary adapter that looks like the adapter illustrated in figures B and C may be used to connect this plug to a 2-pole receptacle as shown in figure B if a properly grounded outlet is not available. The temporary adapter should be used only until a properly grounded outlet (figure A) can be installed by a qualified electrician. The green colored rigid ear, lug, or the like extending from the adapter must be connected to a permanent ground such as a properly grounded outlet box cover. Whenever the adapter is used, it must be held in place by a metal screw. This machine is designed to operate on a standard 15 amp, 115 Volt, 60 Hz, AC circuit. Voltages below 105 volts AC or above 125 volts AC will cause serious damage to the motor.

NOTE: In Canada, the use of a temporary adapter is not permitted by the Canadian Electrical Code

EXTENSION CORDS

Use only three-wire 16/3 or larger gauge approved extension cords that have three-prong grounding type plugs and three-pole receptacles that accept the appliance's plug. Replace or repair any damaged cords or plugs.

WARNING

For the safe operation of this machine follow the instructions given in this booklet and the training given by your supervisor. Failure to do so can result in personal injury and/or damage to machine and property!

DO NOT OPERATE MACHINE IN A HAZARDOUS OR EXPLOSIVE ENVIRONMENT!

Figure A

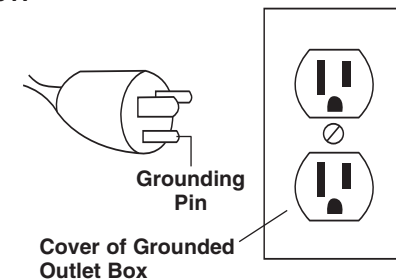


Figure B

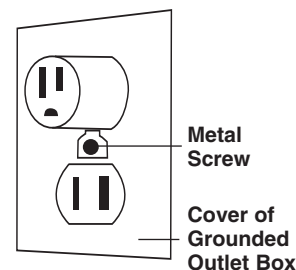


Figure C

