



342 N. Co. Rd. 400 East  
Valparaiso, IN 46383  
219-464-8818 • Fax 219-462-7985  
[www.heatwagon.com](http://www.heatwagon.com)

## Installation and Maintenance Manual

Please retain this manual for future reference.

# *Electric*

## *Construction Heaters*



*For your safety: Do not use this heater in a space where gasoline or other liquids having flammable vapors are stored.*

# IMPORTANT INSTRUCTIONS

## READ ALL INSTRUCTIONS BEFORE USING THIS HEATER

1. This heater is hot when in use. To avoid burns, do not let bare skin touch hot surfaces. Use handle when moving this heater. Keep combustible materials at least 6 feet (2 meter) from the front of the heater and keep them away from sides and rear
2. Extreme caution is necessary when the heater is used near children or invalids and whenever the heater is left unattended
3. Always unplug the heater when not in use
4. Do not operate any heater with a damaged cord or plug or after the heater malfunctions, has been dropped or damaged in any manner. Return heater to authorized service facility for examination, electrical or mechanical adjustment or repair
5. Do not expose to rain, water spray or dripping water
6. This heater is not intended for use in bathrooms, laundry areas and similar indoor locations. Never locate the heater where it may fall into a bathtub or other liquid container
7. Do not run cord under carpeting. Do not cover cord with throw rugs, runners, or the like. Arrange cord away from traffic area and where it will not be tripped over
8. **TO DISCONNECT HEATER**, reduce ambient thermostat to zero. Fan will continue to run (P1800,4000,6000) until unit cools and shuts down automatically, turn switches off, disconnect power. For P600, P900 let fan run one minute then after cooldown, turn switch off, disconnect power.
9. Connect to properly grounded outlets only
10. Do not insert or allow foreign objects to enter any ventilation or exhaust opening as this may cause an electric shock or fire, or damage the heater
11. To prevent a possible fire, do not block air intakes or exhaust in any manner. Do not use on soft surfaces, where openings may become blocked
12. A heater has hot and arcing or sparking parts inside. Do not use in areas where gasoline, paint or flammable liquids are used or stored
13. Do not point to flammable materials
14. Use heater only as described in this manual. Any other use not recommended by the manufacturer may cause fire, electric shock or injury to persons
15. Always plug heaters directly into a wall outlet/receptacle. Never use with an extension cord or relocatable power tap (outlet/power strip)
16. SAVE THESE INSTRUCTIONS

# Installation and Maintenance Manual Models P600, P900, P1800-1, P1800-3, P1800D, P4000 and P6000 Construction Heaters

## Table of Contents:

	<b>Page</b>
Specifications .....	3
Principal of Operation .....	4
Set Up and Operation Instructions .....	5
Maintenance and Storage .....	6
Parts Breakdowns .....	9 -16
Electrical Diagrams .....	10, 12, 14, 17-19
Troubleshooting .....	20

## WARRANTY

All new Heat Wagon and Sure Flame heaters and fans are guaranteed against defective materials and workmanship for one (1) year from invoice date.

Warranty repairs may be made only by an authorized, trained and certified Heat Wagon dealer. Warranty repairs by other entities will not be considered. Warranty claims must include model number and serial number.

## LIMITATIONS

Evidence of improper electric power, misapplication or evidence of abuse may be cause for rejection of warranty claims.

Travel time, mileage and shipping charges will not be allowed. Minor adjustments of heaters are dealers' responsibility. Defective parts must be tagged and held for possible return to the factory for 60 days from date of repair. The factory will provide a return goods authorization, (RGA) for defective parts to be returned.

No warranty will be allowed for parts not purchased from Heat Wagon.  
Heater is not intended for use in pest remediation.

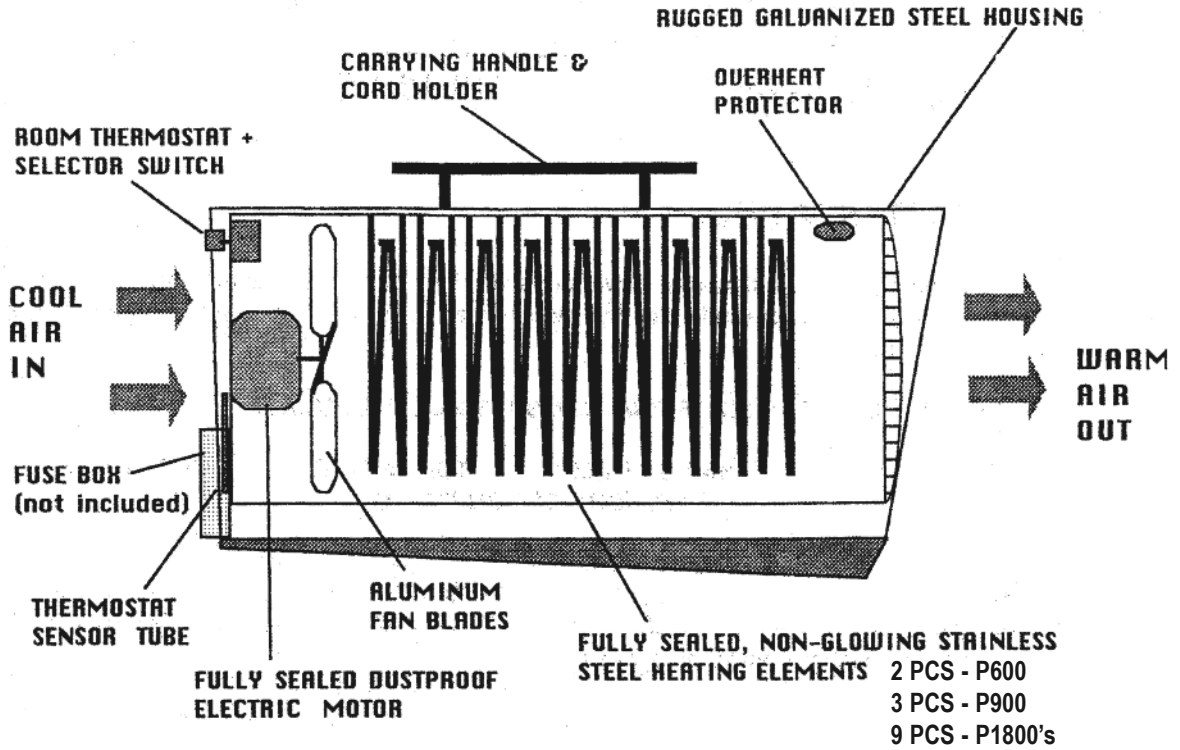


**342 N. Co. Rd. 400 East • Valparaiso, IN 46383**  
**219-464-8818 • 888-432-8924 • Fax 800-255-7985**  
**www.heatwagon.com**

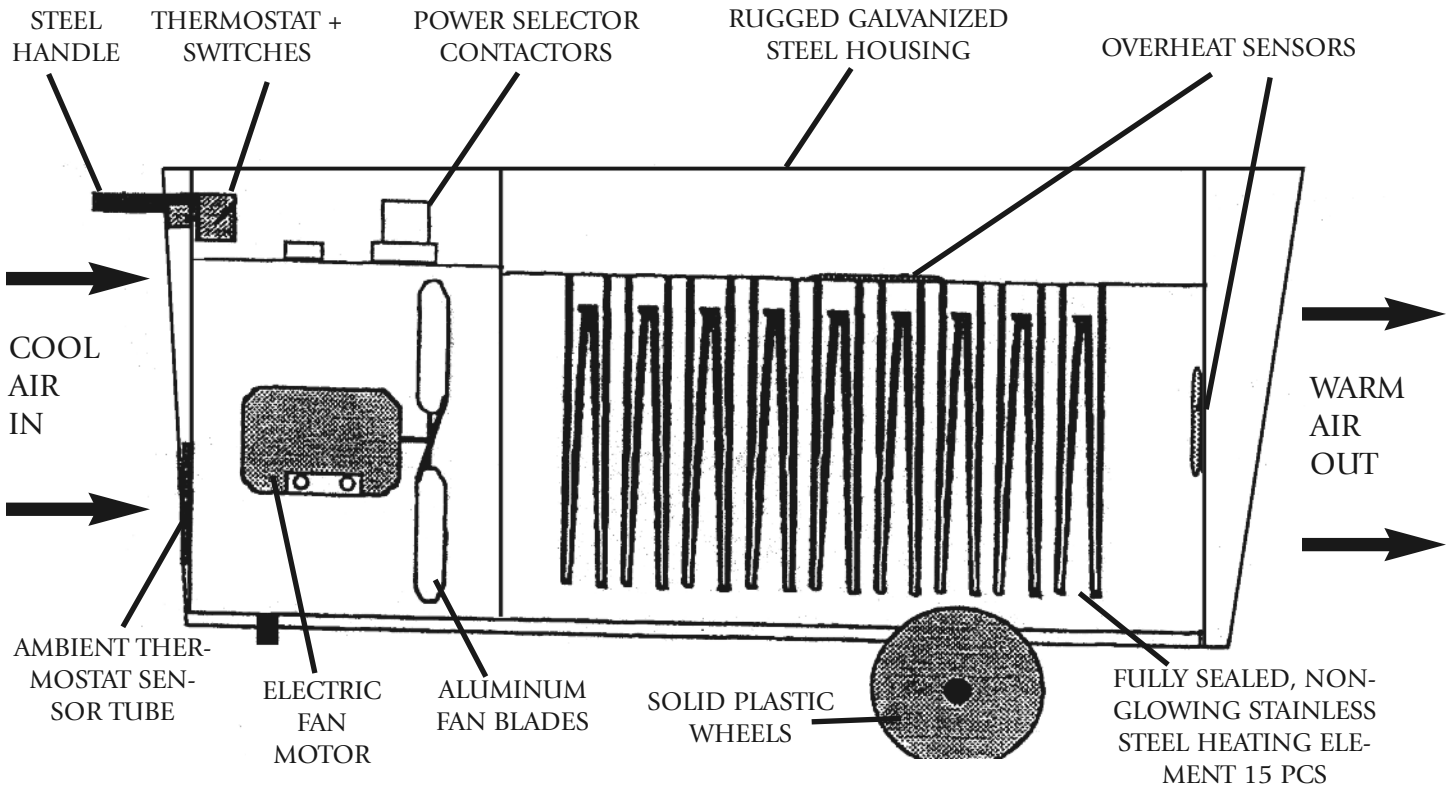
## SPECIFICATIONS

	P600	P900	P1800-1	P1800-3	P1800D	P4000	P6000
Heat Output (Max BTU's) (First Stage)	20,500	30,700	65,000	65,000	65,000	136,000	204,700
(Second Stage)	20,500	30,700	41,000	41,000	41,000	51,200	81,864
(Third Stage)	N/A	N/A	65,000	65,000	65,000	102,400	163,728
	N/A	N/A	N/A	N/A	N/A	136,500	204,606
Watts (Max)	6,000	9,000	18,000	18,000	18,000	40,000	60,000
(First Stage)	N/A	9,000	12,000	12,000	12,000	16,000	24,000
(Second Stage)	N/A	N/A	18,000	18,000	18,000	32,000	48,000
(Third Stage)	N/A	N/A	N/A	N/A	N/A	40,000	60,000
Electrical Rating	240V 60Hz 1Ø	240V 60Hz 1Ø	240V 60Hz 1Ø	240V 60Hz 3Ø	240V 60Hz 3Ø	480V 60Hz 3Ø	480V 60Hz 3Ø
Min. Voltage at Heater	208	208	208	208	208	440	440
Amp Draw (Max)	25	38.0	75	50	50	50	75
(First Stage)	25	38.0	50	34	34	20	24
(Second Stage)	N/A	N/A	75	50	50	40	48
(Third Stage)	N/A	N/A	N/A	N/A	N/A	50	75
Air Flow	250 CFM (425 Cu. m/hr)	350 CFM (600 Cu. m/hr)	590 CFM (1,000 Cu. m/hr)	590 CFM (1,000 Cu. m/hr)	940 CFM	1,800 CFM (3,000 Cu. m/hr)	1,800 CFM (3,000 Cu. m/hr)
Ambient Thermostat	32 to 100°F	32 to 100°F	32 to 100°F	32 to 100°F	32 to 100°F	32 to 100°F	32 to 100°F
Weight	32.9 lbs	48 lbs	62 lbs	62 lbs	62 lbs	130 lbs	142 lbs
Ducting (Max)	N/A	N/A	N/A	N/A	12" x 50' (straight) Duct PN-WD1225 12"x25' Long	14" x 50' (straight) Duct PN-WD1425 14"x25' Long	14" x 50' (straight) Duct PN-WD1425 14"x25' Long
Temp Rise	100°F	100°F	100°F	100°F	100°F	100°F	100°F
dB Noise	53 dB(A) 1m	55 dB(A) 1m	58 dB(A) 1m	58 dB(A) 1m	58 dB(A) 1m	82 dB(A) 1m	82 dB(A) 1m
UL Listed	Yes	Yes	Yes	Yes	Yes	Yes	Yes
Dimensions	20"L x 12"W x 17"H	23"L x 12"W x 18"H	30"L x 14"W x 20"H	30"L x 14"W x 20"H	30"L x 14"W x 20"H	46"L x 20"W x 25"H	46"L x 20"W x 25"H

**PRINCIPAL OF OPERATION**  
**P600, P900, P1800-1, P1800-3**



**PRINCIPAL OF OPERATION**  
**P4000, P6000**



## OPERATION

**REVIEW AND UNDERSTAND ALL WARNINGS IN THIS MANUAL. THEY ARE ESSENTIAL FOR SAFE USE OF THE HEATER. FOLLOW ALL LOCAL CODES.**

**To start heating:**

1. Place the heater on a stable, level surface. Make sure that no explosive or combustible fumes or dust are present. See that the heater is not exposed to water spray, rain, or dripping water.

**Minimum clearances from combustible materials:**

**Outlet: 6 feet, Sides: 1 foot, Top: 2 feet, Rear: 2 feet  
Floor: combustible**

2. Connect heater to proper power source. The P600 requires a 240V, 60Hz single phase 25 Amp power source. The P900 requires a 240V, 60Hz single phase, 40 Amp power source. The P1800-1 requires a 240V, 60 Hz single phase, 75 Amp power source. The P1800-3 requires a 240V, 60 Hz three phase, 50 Amp power source. The P4000 requires a 480V, 60 Hz three phase, 50 Amp power source. The P6000 requires a 480V three phase, 75 Amp power source. Also, **ALL POWER SOURCES NEED TO BE EQUIPPED WITH A CIRCUIT BREAKER!**

**Note: When power is first applied to unit, the heater fan may blow air out of heater INLET. If this condition occurs, (after first removing power from cord) reverse the first two hot wires at heater terminal inlet block. (3 Phase Models Only)**

3. Set the remote thermostat to a temperature above the ambient room temperature by turning the knob. NOTE: The heater will start only if the thermostat "calls for heat" meaning that it is set to higher than prevailing ambient temperature.
4. Set the selector switch to the desired heating setting. For the P1800 series, the options are #1 for ventilation (fan only), #2 for low heat output of 12Kw (41,000 Btu's), or #3 for high output of 18Kw (65,000 Btu's).

For the P4000, the switches are labeled S1 with a heat output of 16Kw (54,600 Btu's), S1 and S2 with a heat output of 32Kw (109,200 Btu's) or S1, S2 and S3 with a heat output of 40Kw (136,000 Btu's).

For the P6000, the switches are labeled S1 with a heat output of 24Kw (81,900 Btu's), S1 and S2 with a heat output of 48Kw (163,800 Btu's) or S1, S2 and S3 with a heat output of 60Kw (204,700 Btu's).

**The heater will now operate automatically, controlled by the thermostat.**

**To Stop Heating: (P1800, P4000, P6000)**

1. Turn all switches to "Off".
2. Allow fan to run until unit stops automatically, controlled by unit cooldown thermostat (fan switch). Heater may cycle more than once.
3. Unplug the power supply cable after the fan has stopped cooling down the heater completely.

**To Stop Heating: (P600, P900)**

1. Reduce ambient (room) thermostat to "Heat Off" position.
2. Allow fan to run for at least two minutes.
3. Flip switch to "Off" position.
4. Unplug heater.

**NOTE: The heater is equipped with an overheat limit switch which may cause the heater to stop. Check and remove the cause for overheating before re-starting.**

***Never disconnect supply plug to stop the heater while in operation!!***

**MAINTENANCE**

**Never service heater while it is plugged in, running or hot. Severe bodily injury or electric shock may occur.**

**Only qualified persons are allowed to open heater for service.**

1. Keep heater clean (ex. dry wall dust). Use pressurized air to blow fan blades clean.  
NOTE: Use moderate pressure to avoid damage to fan blades.
2. Inspect heater before and after each use.
3. The bearings of the fan motor are permanently lubricated and sealed No additional lubrication is needed.

## GENERAL ELECTRIC HEATER SIZING ISSUES

When running Heat Wagon electric heaters from a generator, it is extremely important to make sure that the generator selected for your heater is not undersized. The single largest service issue with Heat Wagon electric heaters is improper set up relating to inadequate voltage due to too small of an electric source and/or too small of a power cord.

### **Generator Selection for Heat Wagon Electric Heaters**

The chart below will help you when it comes to selecting the correct generator required for your Heat Wagon heater:

<b>Model</b>	<b>Watts</b>	<b>Phase</b>	<b>BTU'S</b>	<b>Volts</b>	<b>Amps</b>	<b>CFM</b>	<b>Recommendations</b>
P1500	1,500	1 Phase	5,100	120	15	120	3KW
P600	6,000	1 Phase	20,500	240	25	250	10KW
P900	9,000	1 Phase	30,700	240	38	350	15KW
P1800-1	18,000	1 Phase	64,000/41,000	240	75	590	25KW
P1800-3	18,000	3 Phase	64,000/41,000	240	50	590	25KW
P1800D	18,000	3 Phase	64,000/41,000	240	50	950	25KW
P4000	40,000	3 Phase	136,000/109,200/54,600	480	50	1,800	50KW
P6000	60,000	3 Phase	204,700/163,800/81,900	480	70	1,800	75KW

So, by reviewing the above chart, a P1800-1 would require a minimum 18,000 Watt (18KW), 240 volt single phase generator that can provide 75 amps of continuous power.



## ELECTRICAL CORD SELECTION FOR HEAT WAGON ELECTRIC HEATERS

Once you have established that you have enough power to properly run a Heat Wagon Electric Heater, you still need to deliver the power to the heater adequately. You will need to do a **Voltage Drop Formula**. The Voltage Drop Formula is amps (source), times resistance (cord's wire size) equals voltage drop. A cord's wire size resistance chart is below:

### Wire Size Resistance Chart

#4	0.000308	Resistance per Foot
#6	0.000403	Resistance per Foot
#8	0.000641	Resistance per Foot
#10	0.00102	Resistance per Foot
#12	0.00162	Resistance per Foot
#14	0.00258	Resistance per Foot
#16	0.00409	Resistance per Foot
#18	0.00651	Resistance per Foot

A sample formula is listed below:

Example: P1800-1 phase 75 amp  
Minimum Voltage Required=208V  
150 ft. x 12 gauge wire (0.00162) = .24  
75 amps x .24 = 18.0 volt drop  
220v (at source) – 18v = 202 volts  
Conclusion: Heater will not run, wire too small or cord too long.

### Options to Correct the Situation:

1. Increase gauge of wire: If you increased your wire 6 gauge wire, then your formula would be as follows:

Example: P1800-1 phase 75 amp  
Minimum Voltage Required=208V  
150 ft. x 6 gauge wire (0.000403) = 0.0605  
75 amps x 0.0605 = 4.53 volt drop  
220 volts (at source) – 4.53 volts= 215.46 volts

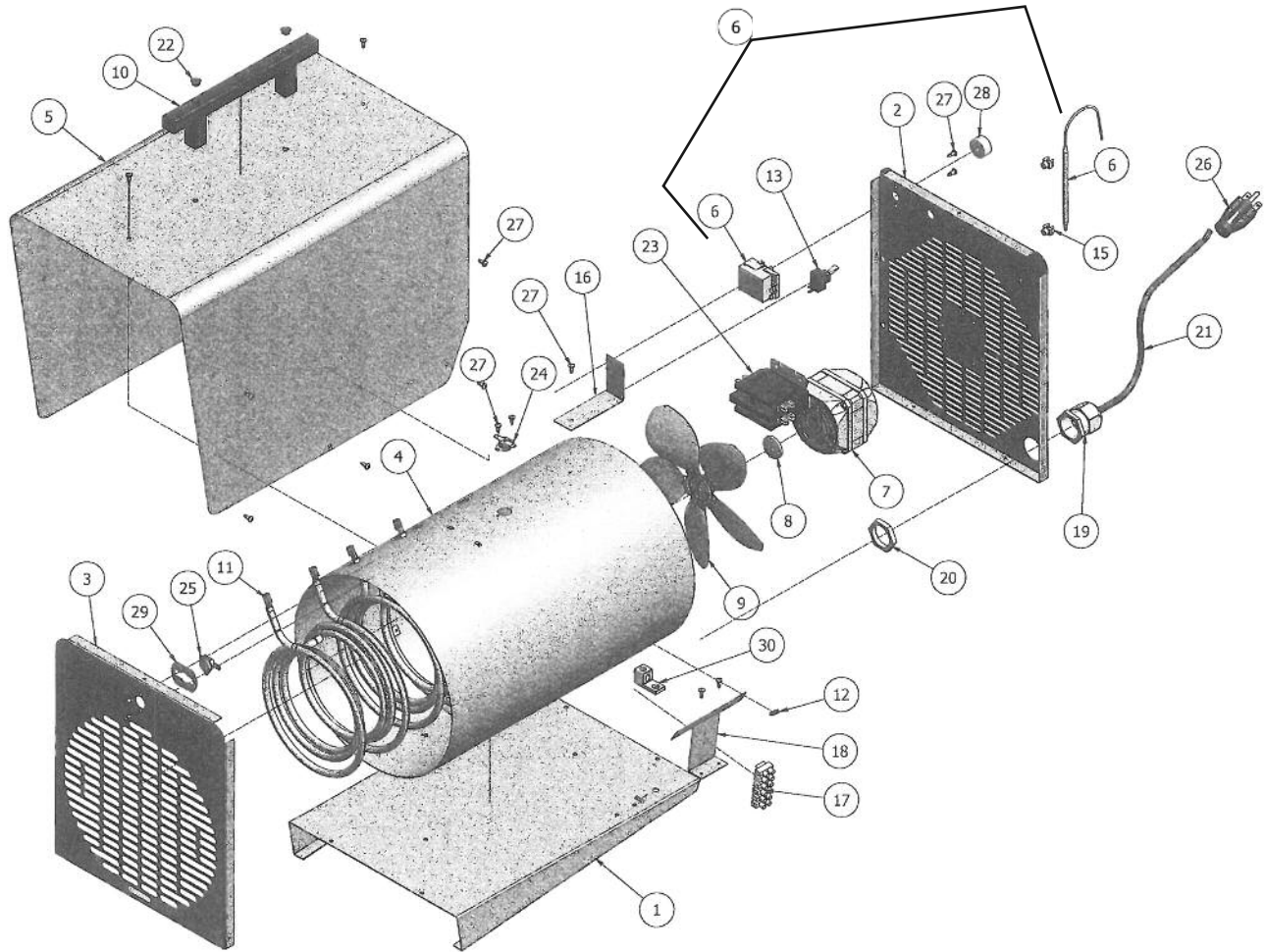
Now, your heater will run properly.

2. Run a shorter cord. If by chance you could use a 50ft cord instead of a 150ft cord, then your formula would be as follows:

Example: P1800-1 phase 75 amp  
Minimum Voltage Required=208V  
50ft. x 12 gauge wire (0.00162) = .08  
75 amps x .08= 6 volt drop  
220 volts (at source) – 6 volts= 214 volts

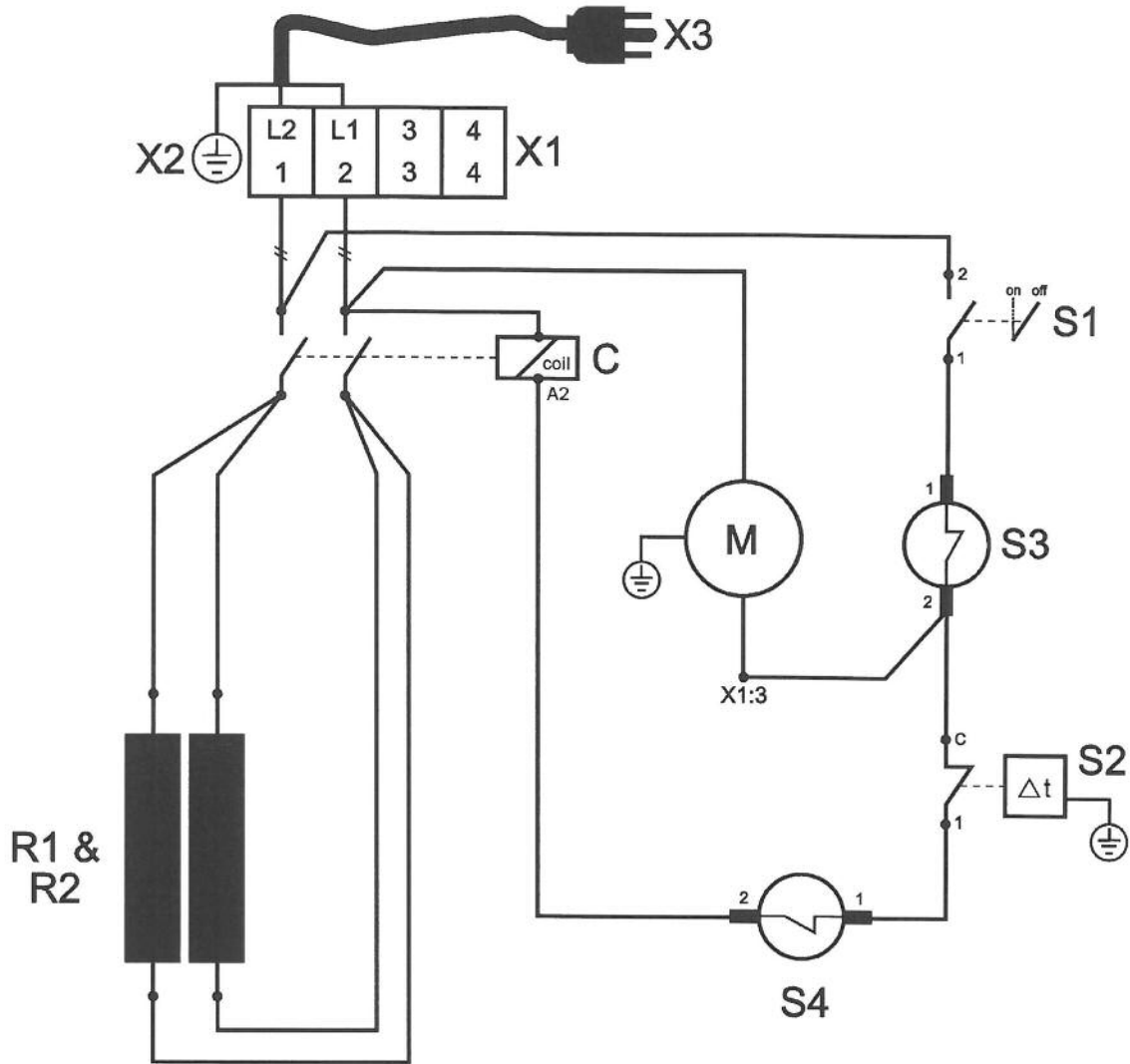
Now, your heater will run properly

## P600 PARTS BREAKDOWN



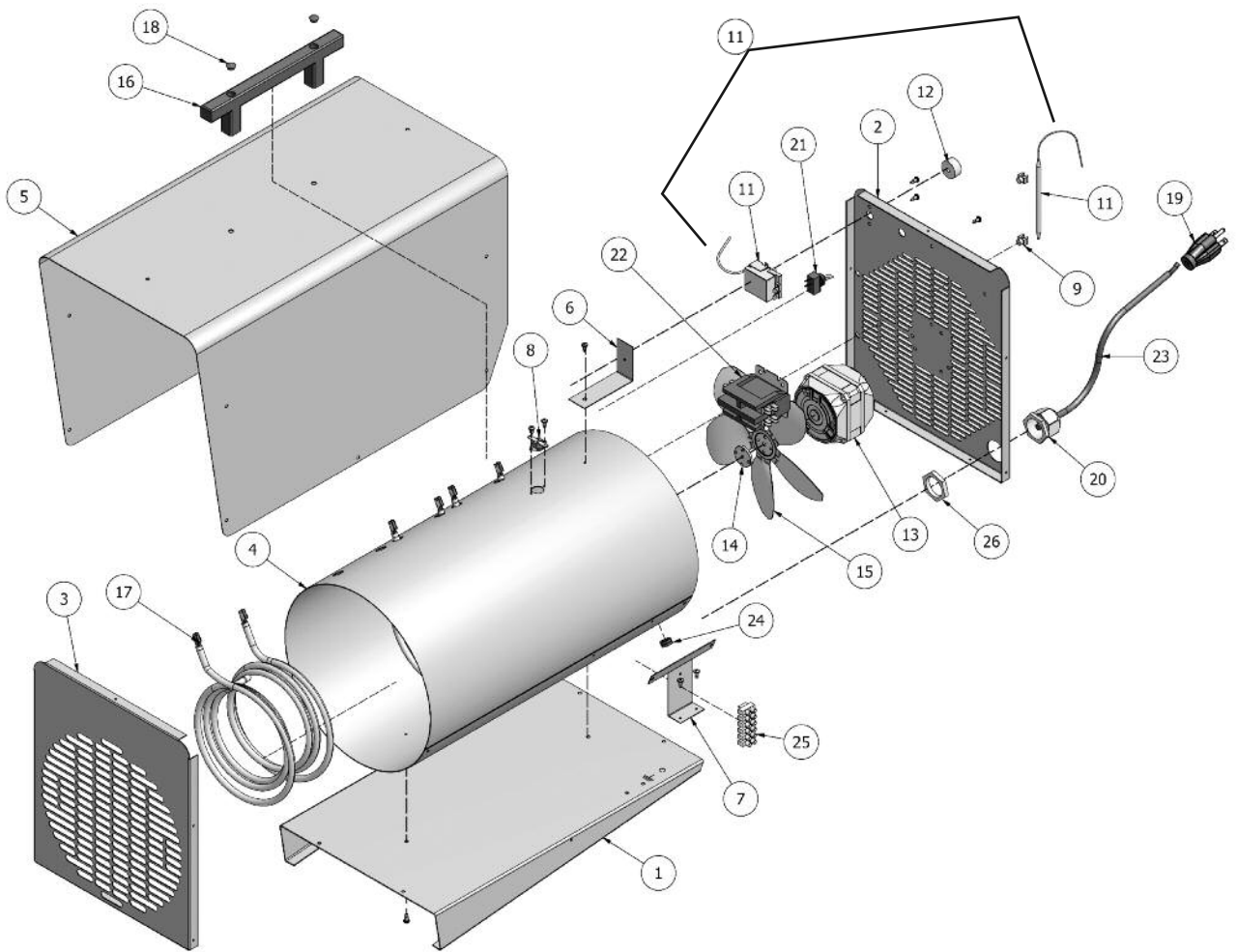
Key #	Description	Part#	Key #	Description	Part#
1	Bottom Plate	HWP 4027013	16	Bracket for Inner Mantle	HWP 4027015
2	Rear Panel	HWP 4027011	17	Terminal Block	HWP 36704
3	Front Panel	HWP 4027012	18	Bracket for Terminal Block	HWP 4027016
4	Inner Mantle	HWP 4027014	19	Strain Reliever	HWP 36922
-	Air Guide Ring, Inner Mantle (not shown)	HWP 4027020	20	Locking Nut, Strain Reliever	HWP 36923
5	Outer Mantle	HWP 4027010	21	Power Cord	ACC 30A10
6	Room Thermostat (Ambient)	HWP 20220	22	Plug, Handle (2 pcs)	HWP 80110
7	Fan Motor	HWP 14145	23	Contactator	HWP 22570
8	Hub, Fan Motor	HWP 17907	24	Overheat Limit Switch	HWP 21201
9	Fan Blade	HWP 16109	25	Limiter, Air Outlet	HWP 21206
10	Handle	HWP 80100	26	Plug	HWP 00275-00T
11	Heating Element (2)	HWP 42800	28	Knob, Room Thermostat	HWP 20577
12	Wire Bushing (Guard Ring)	HWP 36809	29	Bracket for Limiter	HWP 4027017
13	Toggle Switch	HWP 26900 (400021)	30	Ground Lug	Not Included
15	Plastic Bracket for Bulb (2)	HWP 37910			

## P600 WIRING DIAGRAM



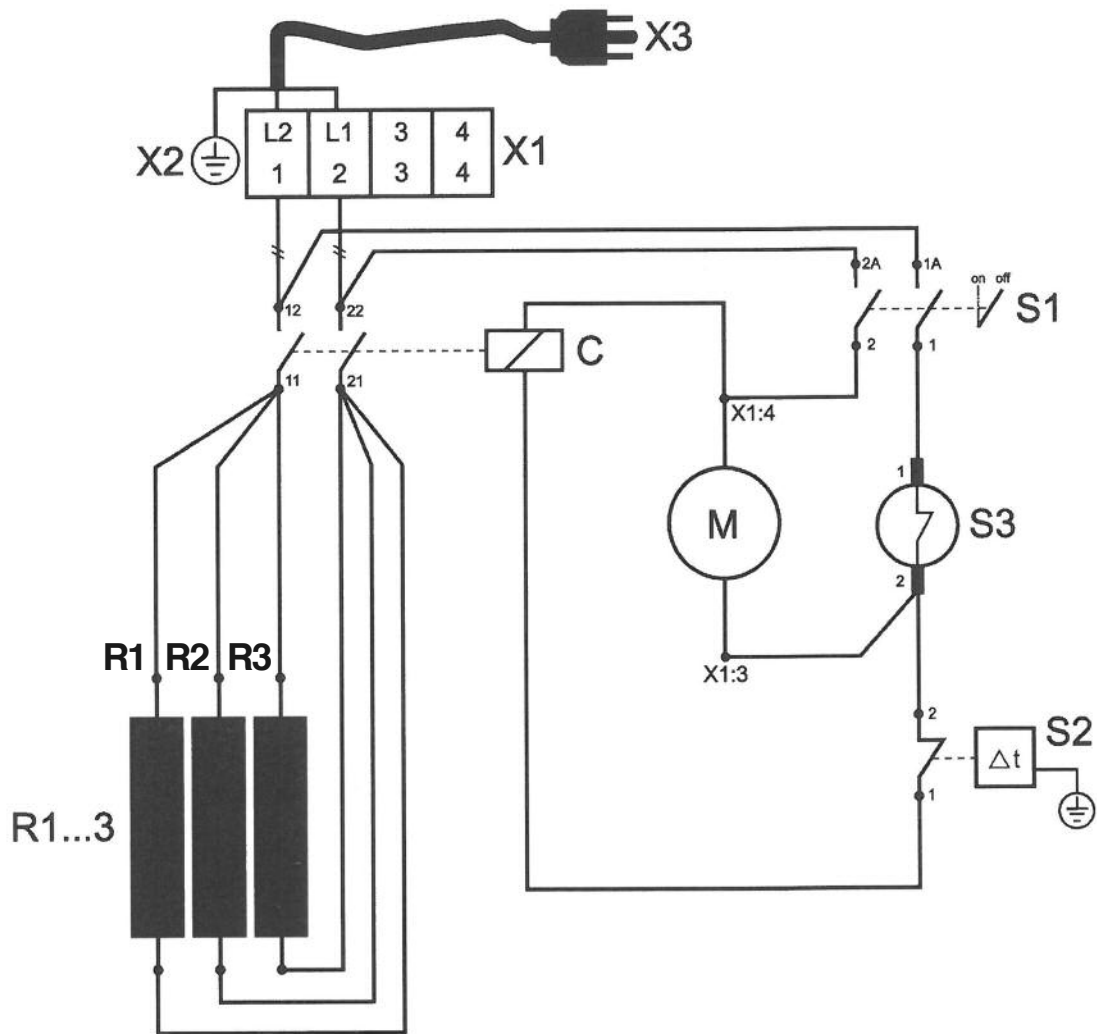
Key #	Description	Part#
C	Contactor	HWP 22570
M	Fan Motor	HWP 14145
R1-R2	Heating Element	HWP 42800
S1	Toggle Switch	HWP 26900 (40021)
S2	Room Thermostat	HWP 20220
S3	Overheat Limit Switch	HWP 21201
S4	Limiter, Air Outlet	HWP 21206
X1	Terminal Block	HWP 36704
X2	Grounding Lug	Not Included
X3	Power Cord & Plug Assembly	ACC 30A10

## P900 PARTS BREAKDOWN



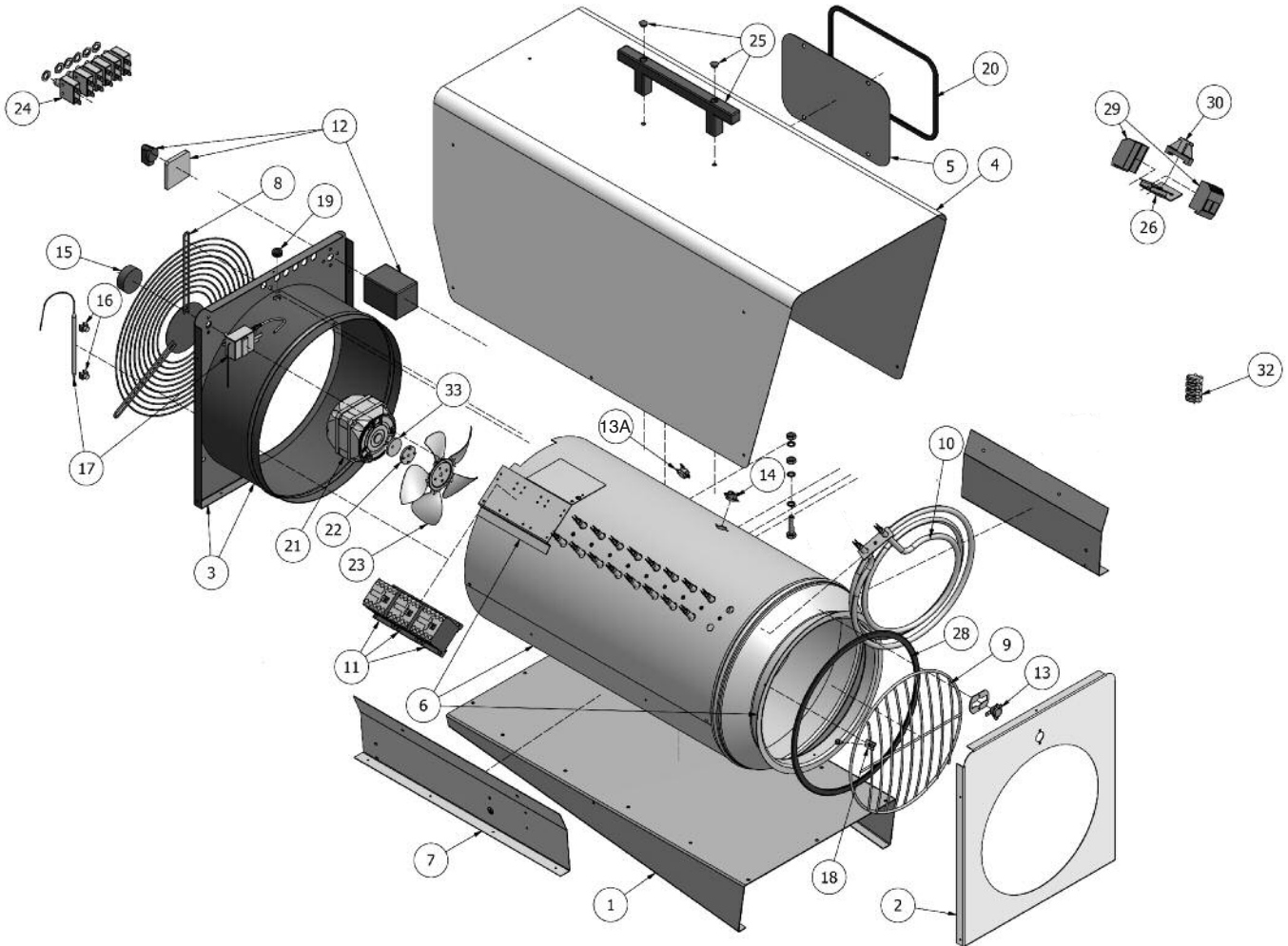
<b>Key #</b>	<b>Description</b>	<b>Part#</b>	<b>Key #</b>	<b>Description</b>	<b>Part#</b>
1	Bottom Plate	HWP 40081001	17	Heating Element	HWP 42800 (Qty. 3)
2	Rear Panel	HWP 40081002	18	Plug for Handle (2PK)	HWP 80110
3	Front Panel	HWP 40081003	19	Plug	HWP 00275-00T
4	Inner Mantle	HWP 40081004	20	Strain Reliever	HWP 36922
5	Outer Mantle	HWP 40081005	21	Toggle Switch	For S/N A0001-A120 - HWP 400021
6	Bracket, Inner Mantle	HWP 40081006			For S/N B0121-B0270 - HWP 26901
7	Bracket, Terminal Block	HWP 40081007			For S/N B0270-Greater - HWP 26902
8	Overheat Limit Switch	HWP 21200	22	Contactor	HWP 22570
9	Plastic Bracket for Thermostat	HWP 37910	23	Power Cord Assembly	ACC 50A10
11	Ambient Thermostat	HWP 20220	24	Guard Ring / Wire Bushing	HWP 36809
12	Knob for Thermostat	HWP 20577	25	Terminal Block	HWP 36704
13	Fan Motor	HWP 180014 (14201)	26	Jam Nut	HWP 36923
14	Fan Hub, Plastic	HWP 17907			
15	Fan Blade	HWP 16110			
16	Handle	HWP 80100			

## P900 WIRING DIAGRAM



Key #	Description	Part#
C	Contactor	HWP 22570
M	Fan Motor	HWP 14201 (180014)
R1-R3	Heating Element	HWP 42800
S1	Toggle Switch	See Key #21
S2	Ambient Thermostat	HWP 20220
S3	Overheat Limit Switch	HWP 21200
X1	Terminal Block	HWP 36704
X2	Grounding Lug	Not Included
X3	Power Cord & Plug Assembly	ACC 50A10

## P1800-1, P1800-3, P1800D PARTS BREAKDOWN



Key #	Part#	Description	Key #	Part#	Description
1	HWP 180007	Bottom Plate	19	HWP 36809	Guard Ring
2	HWP 180006	Front Panel (P1800D - 1800037)	20	HWP 401604	Gasket for Connection Hatch*
3	HWP 180015	Rear Panel	21	HWP 180014	Fan Motor (P1800D - 14350, Includes Blade)
4	HWP 180002	Hood* (No Hatch)	22	HWP 180033	Fan Hub (7mm Shaft)
5	HWP 180032	Hood with Connection Hatch*	23	HWP 180012	Fan Blade
6	HWP 180032A	Connection Hatch*	24	HWP 180027	Circuit Breakers (P1800-1 Only)
7	HWP 180003	Inner Mantle (Including Air Cone)	25	HWP 180001	Handle
8	HWP 180009	Bracket	26	SFP S1500-105	Bracket for Terminal Block (P1800-1 Only)
9	HWP 180019	Rear Grill (P1800D - 1800035)	28	HWP 180004	Gasket
10	HWP 180005	Front Grill	29	HWP 36615	Terminal Block (P1800-1 Only)
11	HWP 180026	Heating Element (9 per Heater)	30	HWP 36616	Locking Clamp (P1800-1 Only)
12	HWP 180022	Contactors	32	HWP 36703	Terminal Block (P1800-3 Only)
13	HWP 180021	Main Switch Assembly		(HWP 180023B)	
13A	HWP 180008	Overheat Limit Switch (Outer)	33	HWP 180011	Fan Hub Cap & Bolt
14	HWP 180024	Overheat Limit Switch (Inner)			
15	HWP 180025	Unit Cooldown Switch			
16	HWP 400018	Thermostat Knob			
17	HWP 37910	Plastic Bracket			
18	HWP 180017	Ambient Thermostat			
	HWP 82760	Plate Nut			

\*Similar Equipped Models Only

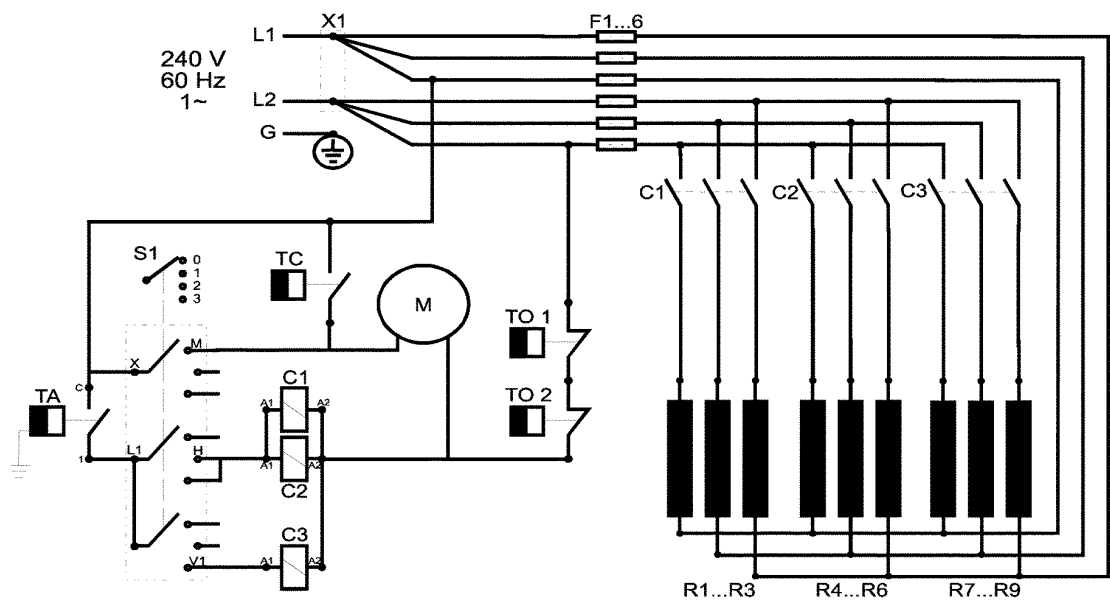
Not Shown

WD1225      Duct for  
P1800D (12"x25' long)

Capacitor for #2, P1800D HWP 1800036

1800038      Capacitor Holder

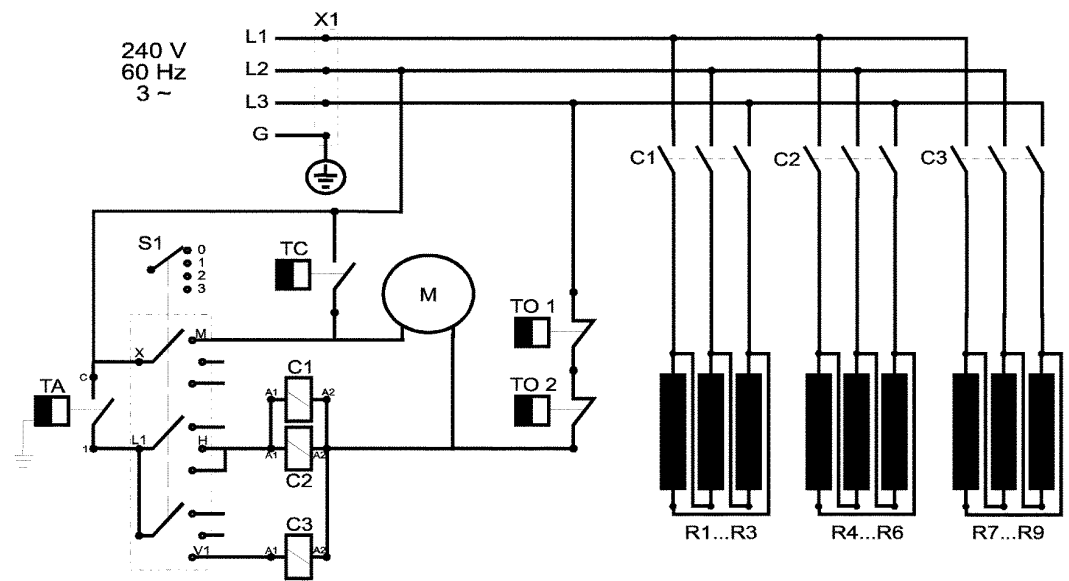
## WIRING DIAGRAM HEAT WAGON P1800 SINGLE PHASE



**SINGLE  
PHASE MODEL  
ONLY!**

C1 ... C3	Contactors & Coils	HWP 180022	TA	Ambient Thermostat	HWP 180017
F1 ... 6	Circuit Protectors	HWP 180027	TC	Cooldown Thermostat	HWP 180025
M	Fan Motor	HWP 180014	TO 1	Overheat Limit Switch (inner)	HWP 180024
R1 ... R9	Heating Elements	HWP 180026	TO 2	Overheat Limit Switch (discharge)	HWP 180008
S1	Main Switch	HWP 180021	X1	Terminal Block	HWP 36615

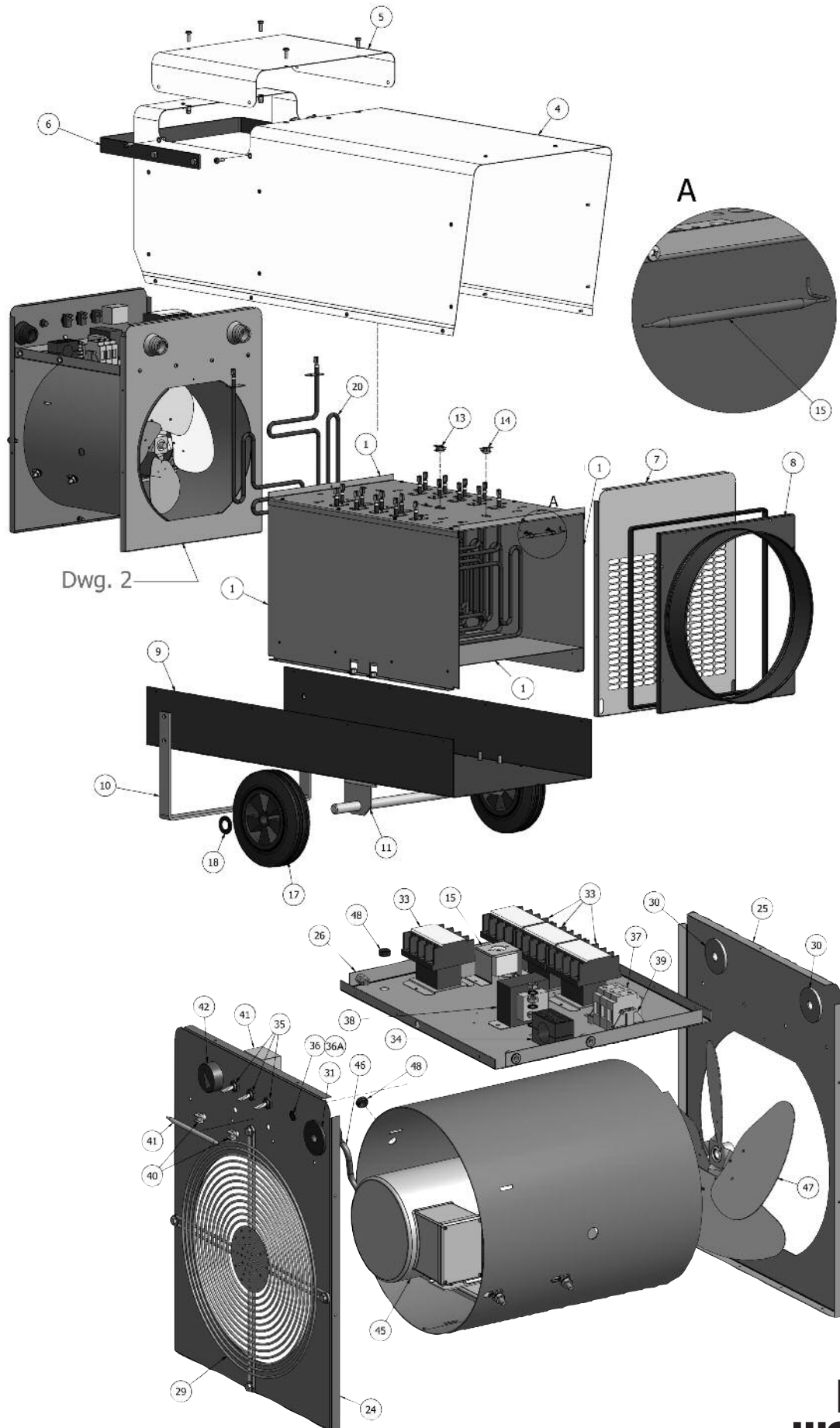
## WIRING DIAGRAM HEAT WAGON P1800 THREE PHASE



**THREE PHASE  
MODEL ONLY!**

C1 ... C3	Contactors & Coils	HWP 180022	TA	Ambient Thermostat	HWP 180017
M	Fan Motor	HWP 180014	TC	Cooldown Thermostat	HWP 180025
R1 ... R9	Heating Elements	HWP 180026	TO 1	Overheat Limit Switch (inner)	HWP 180024
S1	Main Switch	HWP 180021	TO 2	Overheat Limit Switch (discharge)	HWP 180008
			X1	Terminal Block	HWP 180023B

# P4000 - P6000 PARTS BREAKDOWN

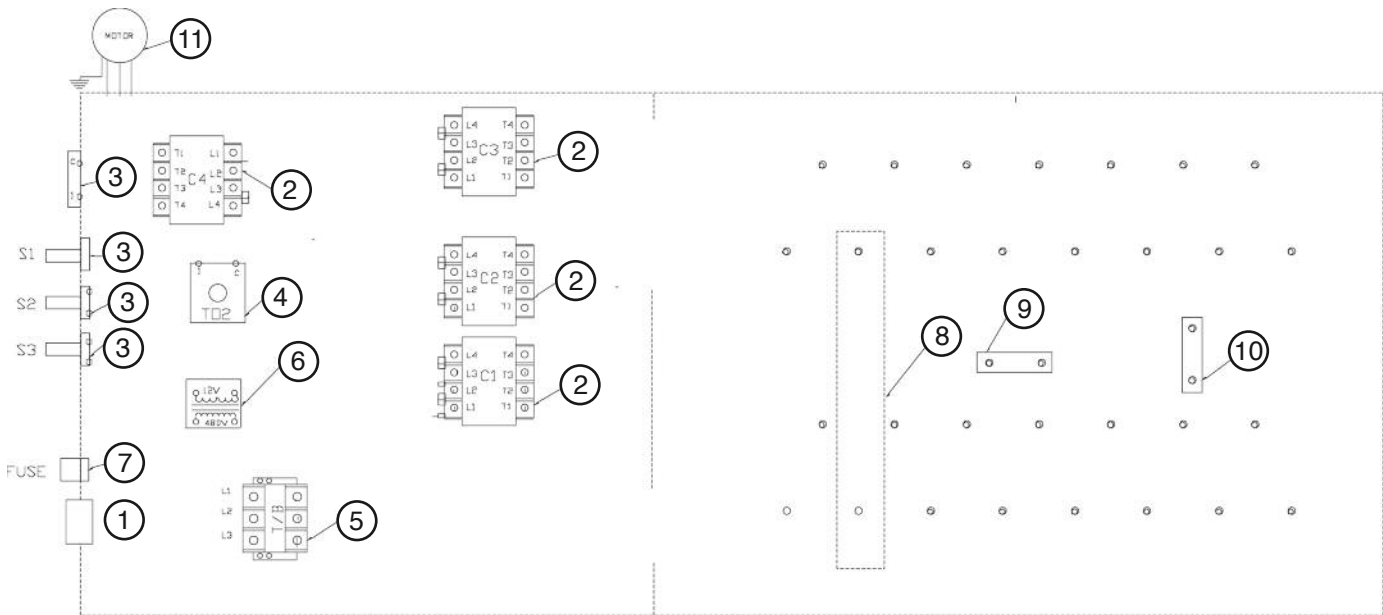




## P4000 - P6000 PARTS BREAKDOWN

Key #	Part#	Description
1	HWP 400003	Heat Exchanger Chamber
4	HWP 400002	Hood (Including Connection Hatch)
5	HWP 400027	Connection Hatch Only
6	HWP 400001	Handle
7	HWP 400006	Front Panel
8	HWP 400008	Duct Adapter
9	HWP 400007	Bottom Frame
10	HWP 400011	Support Leg
11	HWP 400005	Wheel Shaft
13	HWP 180024	Overheat Limit Switch (Inner)
14	HWP 180025	Cooldown Thermostat
15	HWP 20550	Outlet Air Thermostat (PETE)
17	HWP 400004	Wheel
18	HWP 74600	Locking Washer
20	HWP 400026	Heating Element (15 Per Heater, P4000)
	HWP 600026	Heating Element (15 Per Heater, P6000)
24	HWP 400015	Rear Panel
25	HWP 400009	Partition Panel / Bracket
26	HWP 400010	Contactors Mounting Plate
29	HWP 400019	Fan Guard Grill
30	HWP 400020	Bushing, Medium
31	HWP 400016	Bushing, large
33	HWP 400022	Contactors (4 Per Heater)
34	HWP 180016	Strain Reliever
35	HWP 400021	Toggle Switch
36	HWP 38110	Fuse Holder
36A	HWP PEF1	Fuse
37	HWP 36615	Terminal Block
38	HWP 28400	Transformer (PETR)
39	HWP 36616	Locking Clamp + End Plate
40	HWP 37910	Plastic Bracket
41	HWP 180017	Ambient Thermostat
42	HWP 400018	Thermostat Knob
45	HWP 400014	Fan Motor
47	HWP 400012	Fan Blade
48	HWP 36802	Bushing, Small
Not Shown		
	WD1425	Duct for P4000, P6000 (14"x25' long)

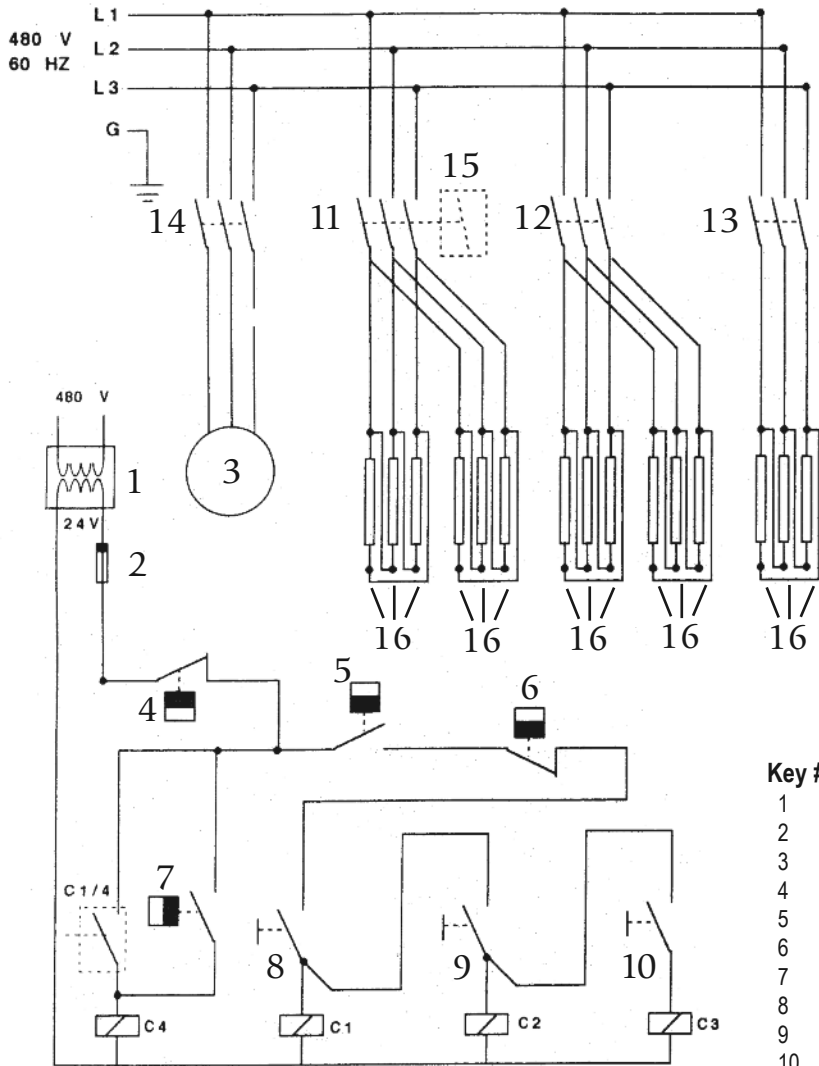
## P4000 - P6000 CONTROL BOX



Item	Part No.	Description	Item	Part No.	Description
1	HWP 180017	AMBIENT THERMOSTAT	7	HWP PEF1	FUSE
2	HWP 400022	CONTACTORS	8	HWP 400026	HEATING ELEMENT - P4000
3	HWP 400021	SWITCH	8	HWP 600026	HEATING ELEMENT - P6000
4	HWP 20550	OUTLET AIR THERMOSTAT (PETE)	9	HWP 180024	OVERHEAT LIMIT SWITCH (INNER)
5	HWP 36615	TERMINAL BLOCK	10	HWP 180025	UNIT COOLDOWN T-STAT
6	HWP 28400	TRANSFORMER (PETR)	11	HWP 400014	FAN MOTOR

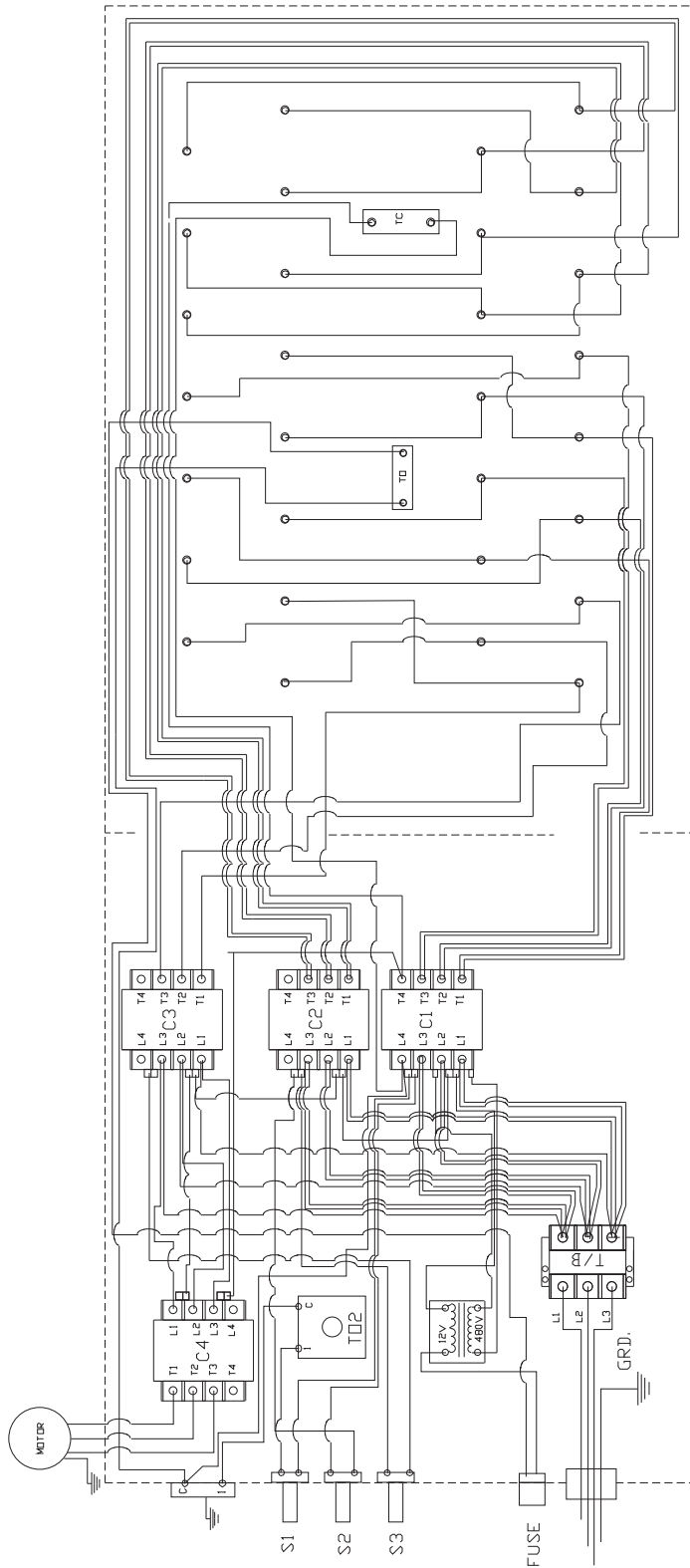
# P4000 - P6000 WIRING

## 480 Volt 60 Hz 3 PH



Key #	Part#	Description
1	HWP 28400	Transformer
2	HWP PEF1	Fuse
3	HWP 400014	Fan Motor
4	HWP 180024	Overheat Limit Switch
5	HWP 180017	Ambient Thermostat
6	HWP 20550 (PETE)	Limit Switch - Outer
7	HWP 180025	Unit Cooldown Switch
8	HWP 400021	Control Switch (for output 16KW)
9	HWP 400021	Control Switch (for output + 16KW)
10	HWP 400021	Control Switch (for output + 8KW)
11	HWP 400022	Contactor & Coil (for output 16KW)
12	HWP 400022	Contactor & Coil (for output + 16KW)
13	HWP 400022	Contactor & Coil (for output + 8KW)
14	HWP 400022	Fan Contractor
15	HWP 400022	Pole 4 of Contactor C1
16	HWP 400026	Heating Elements, 2.7KW each for P4000
16	HWP 600026	Heating Elements, 4.0KW each for P6000

# P4000 - P6000 WIRING



HEAT WAGON	MODEL P4000
DATE OF DRAWING 1998	FROM TO 1994 CURR.

## ELECTRIC HEATER TROUBLESHOOTING

Before beginning the Troubleshooting section, please review the Set-up and Installation section of this manual. Most technical issues can be resolved with proper set-up and preventative maintenance.

Symptom	Cause	Check	Remedy
Turn thermostat up and motor does not come on:	No power on any phase.	Check for 240V between L1 and L2 (for single phase models). Check for power between L1 and L2, L2 and L3, and between L1 and L3 (for 3 phase models). Overheat Limit (TO)	Refer to Setup and Operation section.
	Overheat Limit (TO)	Check for continuity. The switch should be closed.	Replace
	Main Switch assembly	Check for continuity.	Replace
	Motor	Check for proper voltage to motor.	Replace
	Motor Relay (P4000 and P6000 Only)	Check for 24 volts to contactor.	Make sure contactor pulls in. If not, replace.
	Control Transformer (P4000 and P6000 only)	Check for 24 volts out from Control Transformer.	Replace
Motor Starts but air comes out the inlet:	Reversed power (hot) wires	Check power at terminal block	Switch first two power wires at terminal block
Motor starts but no heat:	Ambient Thermostat	Turn thermostat above ambient temperature.	Replace
	Overheat limit(s)	Check for continuity. It is a closed switch	Replace
	Contactors	Make sure they are clean, tight, and that they pull in when voltage is applied	Replace
	Circuit Breakers (P1800-1 only)	Check that none are tripped and power flows thru.	Replace
	Heating Elements	Visual check for burns. Check resistance of each individual element	P600 & P900 19.7 K Ohms, P1800 Series 26 K Ohms, P4000 85 K Ohms, P6000 54 K Ohms
Heater operates, fan doesn't cool the unit after thermostat is satisfied.	Fan Cooldown Thermostat	Check for resistance.	Replace
		Check for proper wiring.	Rewire
High limit tripping	Low Volume of Air	Duct restrictions.	Straighten duct.
		Dust buildup on inlet grill	Clean fan area.







*342 N. Co. Rd. 400 East  
Valparaiso, IN 46383*

*219-464-8818 • Fax 219-462-7985*

*[www.heatwagon.com](http://www.heatwagon.com)*