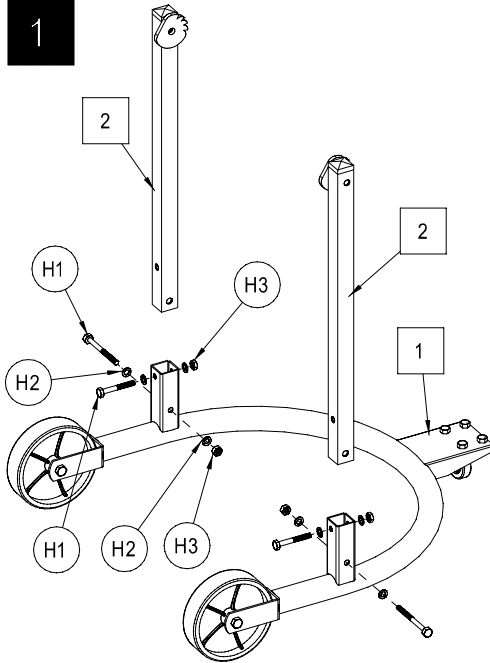
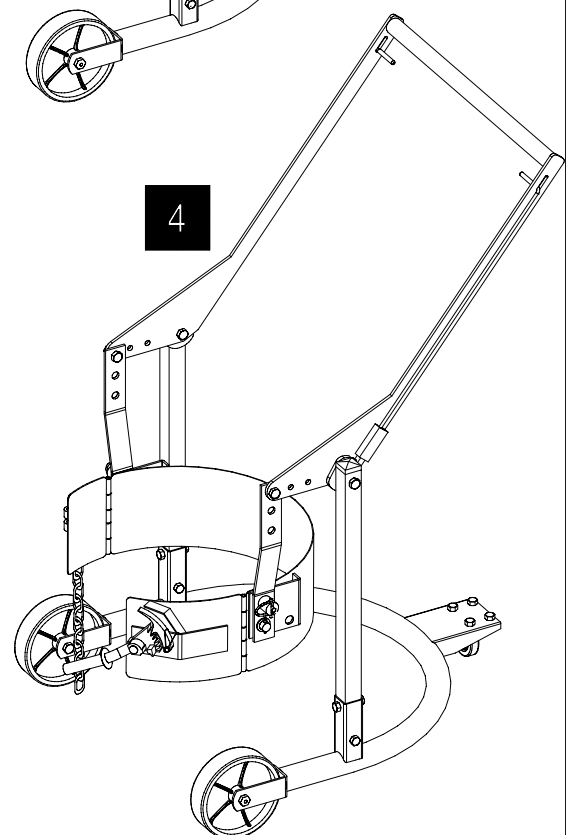
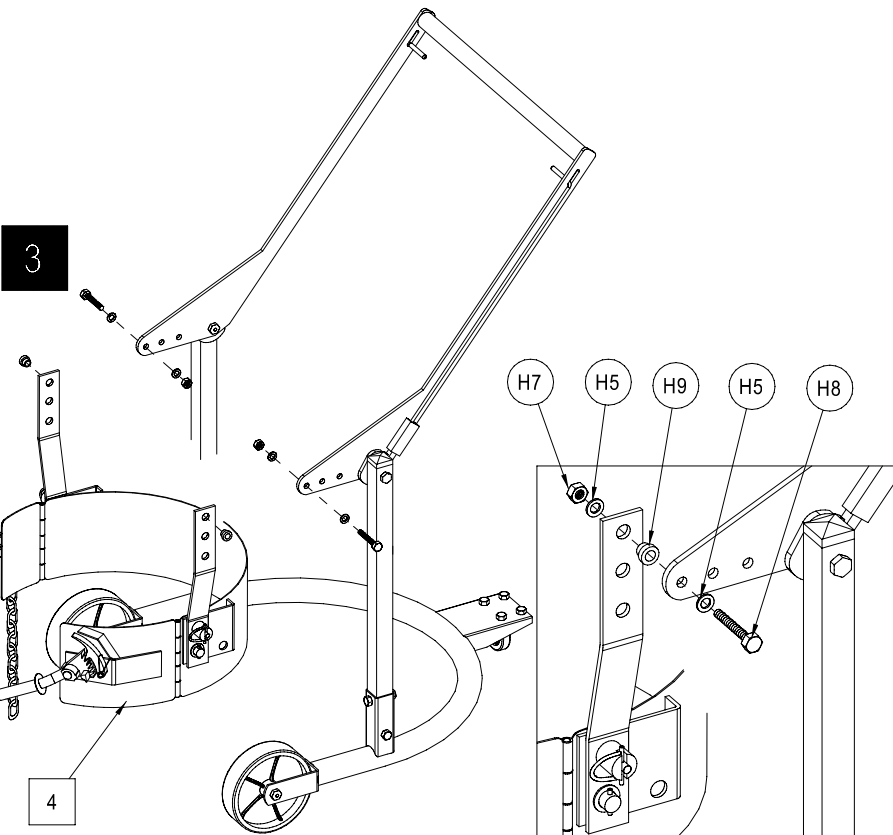
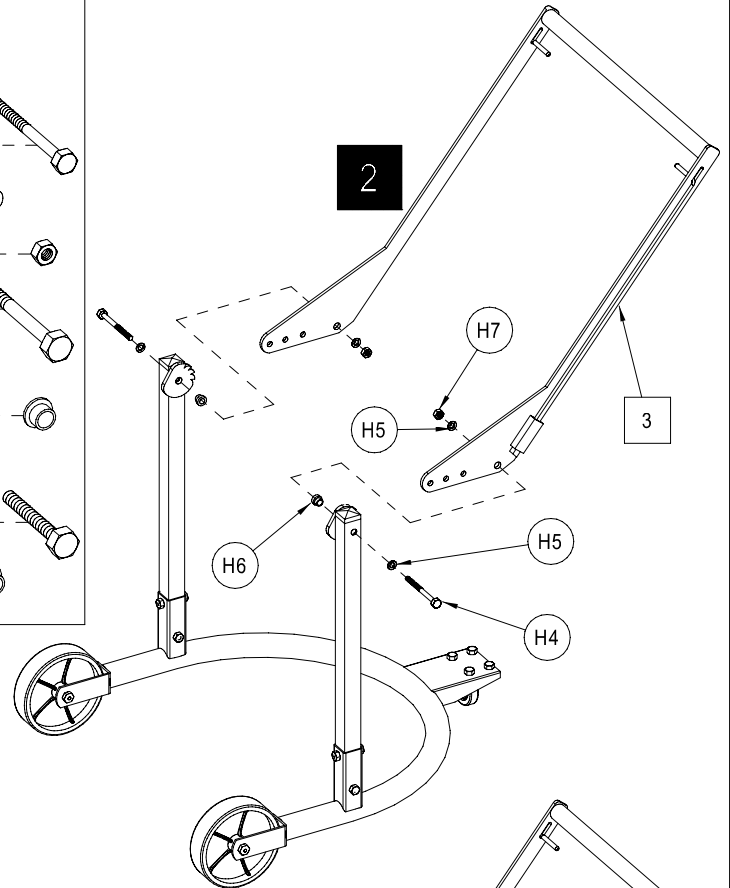


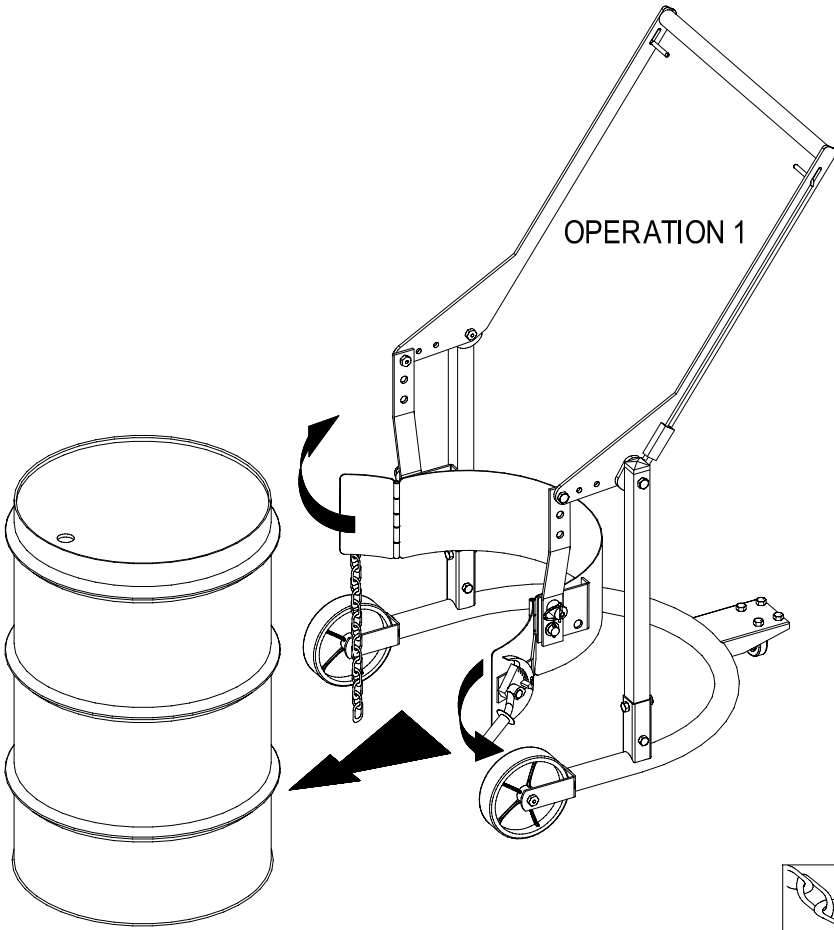
**MOBILE DRUM CARRIER**  
ASSEMBLY INSTRUCTION



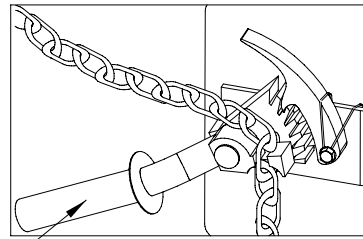
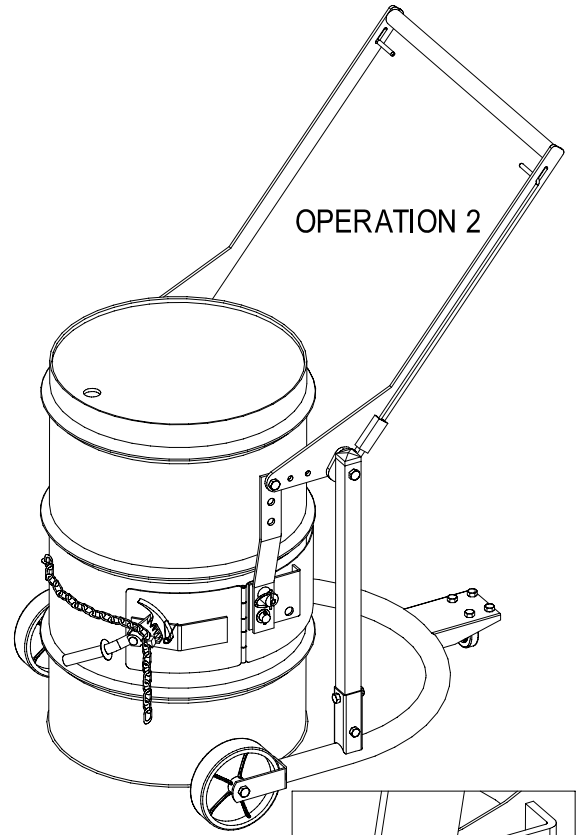
CONTENTS		
REF.	QTY.	DESCRIPTION
1	1	BASE
2	2	LEG SUPPORT
3	1	HANDLE
4	1	SUPPORTING HOOP
H1	4	M10 x 2 1/2" HEX HEAD BOLT
H2	8	7/16 PLAIN WASHER
H3	4	M10 HEX HEAD LOCK NUT
H4	2	M12 x 3 1/2" HEX HEAD BOLT
H5	8	1/2 PLAIN WASHER
H6	2	BUSHING
H7	4	M12 HEX HEAD LOCK NUT
H8	2	M12 x 1 1/2" HEX HEAD BOLT
H9	2	BUSHING



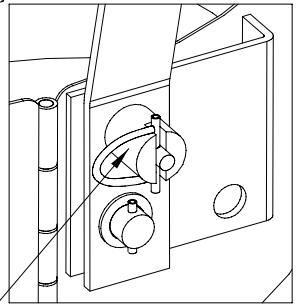
OPERATION 1



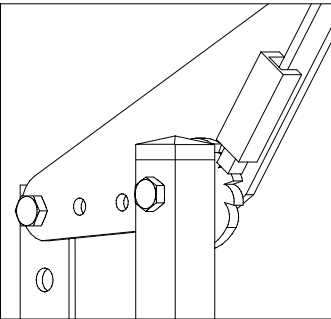
OPERATION 2



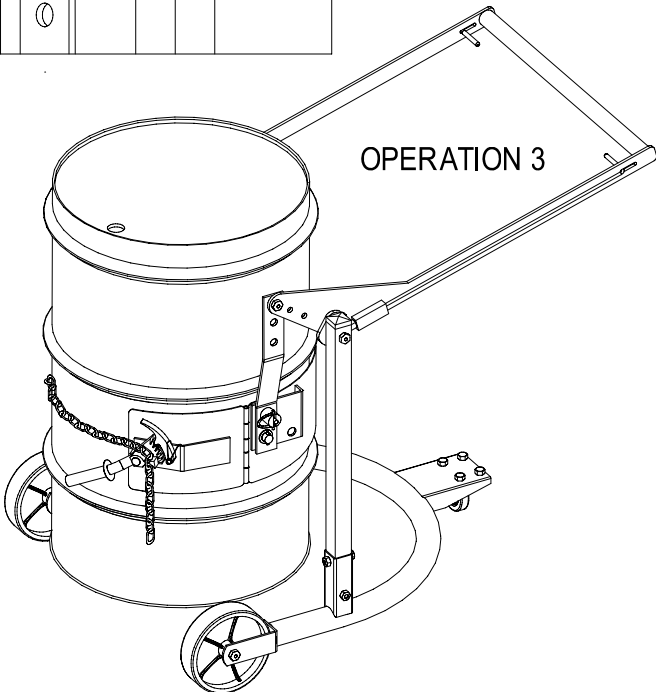
RATCHET HANDLE



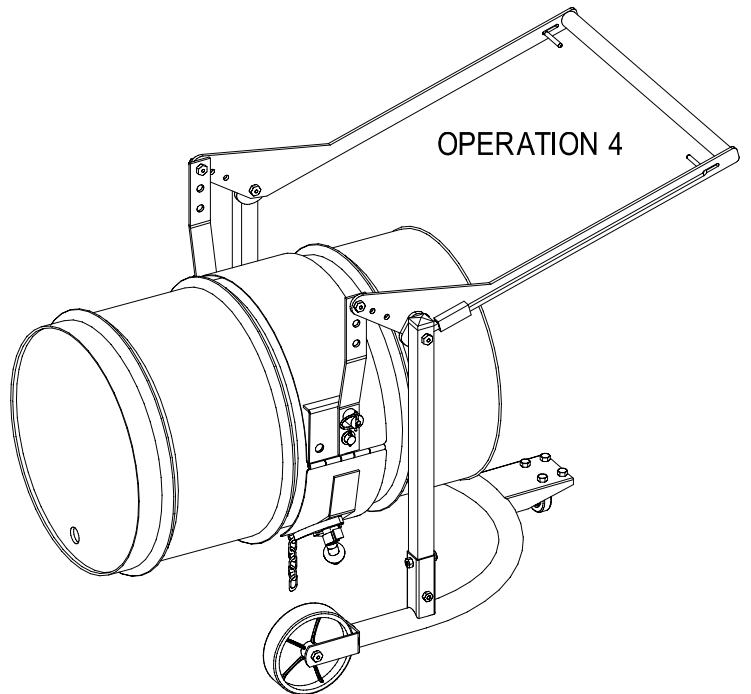
LOCKING PIN

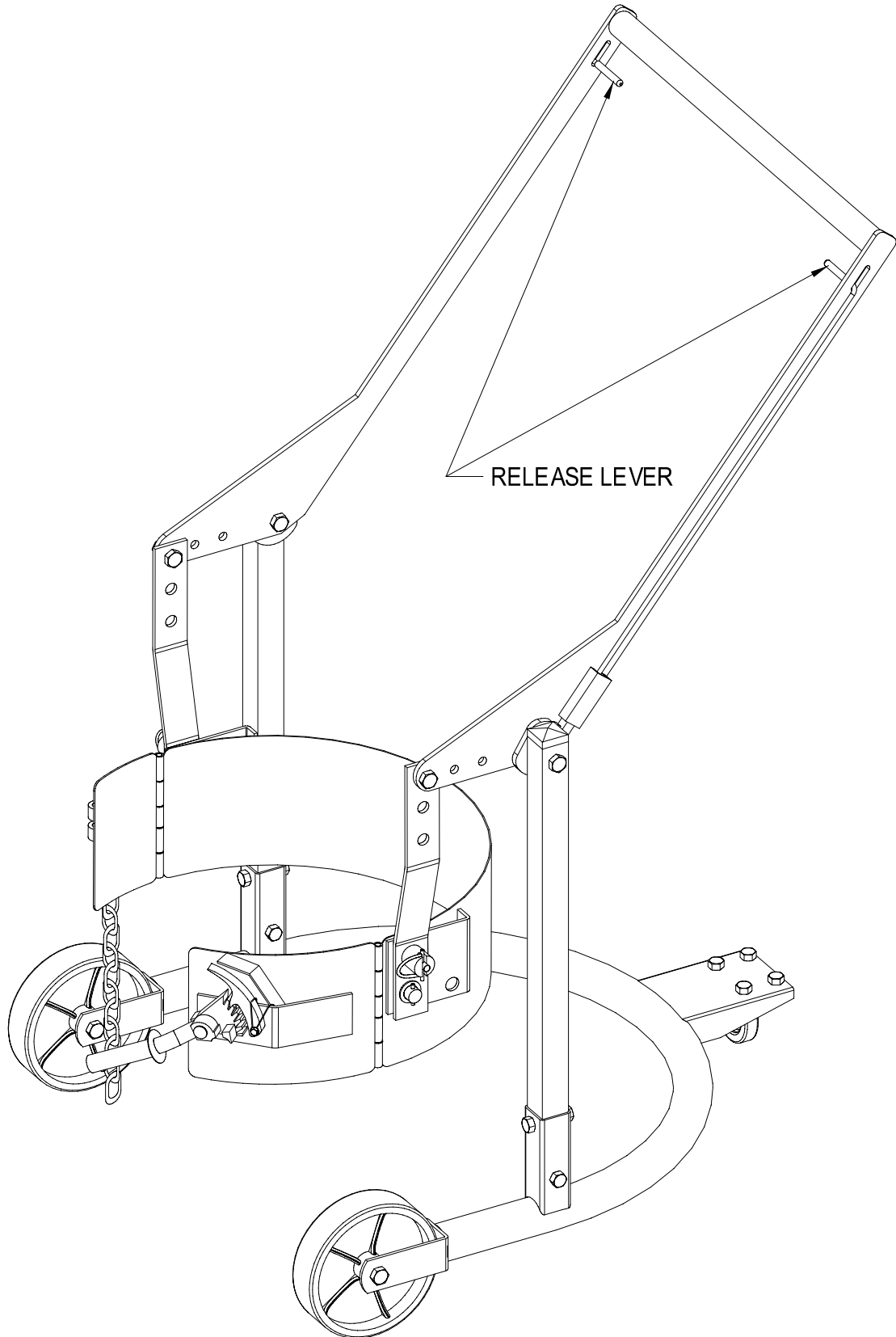


OPERATION 3



OPERATION 4





RELEASE LEVER

# Instruction Manual

Mobile-Karrier

*For 55 gallon (210 liters) steel drum*



**Note:** Owner/Operator must read and understand this instruction manual before using the Mobile-Karrier.

## **Contents**

**I . Structure and Relevant Parts Description**

**II . Specifications**

**III. Precaution**

**IV. Operation**

**V . Maintenance**

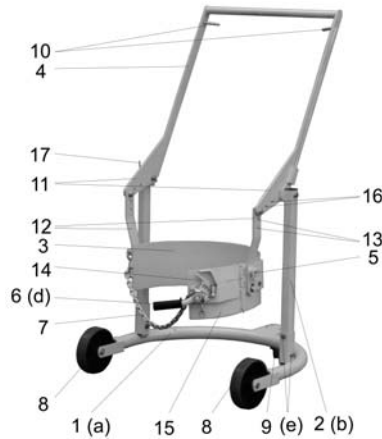
**VI. Assembly**

**VII. Exploded View & Spare Parts**

THANK YOU FOR CHOOSING OUR MOBILE-KARRIER. FOR YOUR SAFETY AND CORRECT OPERATION, PLEASE CAREFULLY READ THE MANUAL BEFORE USE.

NOTE: All of the information reported herein is based on data available at the time of printing. The factory reserves the right to modify its own products at any time without notice or incurring in any sanction. Please verify with the factory for possible updates.

### I . Structure and Relevant Parts Description



Item No.	Description	Remark
1	Chassis	
2	Mast	
3	Supporting hoop	
4	Handle	
5	Location pin	
6	Fastening lever	
7	Chain	
8	Wheel	
9	Caster	

10	Location lever	
11	Lifting arm	
12	Hanger plate	
13	Adjustment hole	
14	Pawl	
15	Mobile hoop	
16	Adjustment hole	
17	Hook	

## II . Specifications

<b>Capacity</b>	800lbs
<b>Drum dimension</b>	22-1/2" x 36"
<b>Net Weight</b>	50kg

## III. Precaution

1. Always use the Mobile-Karrier on firm and flat floor.
2. Do not overload.
3. Only after chain firmly holds drum and location pin is correctly positioned can the Mobile-Karrier be moved.
4. Do not pull location lever (Part No. 10) while moving the Mobile-Karrier.

## IV. Operation

### 1. Clamping drum

The mobile hoop (Part No. 15) is usually open due to being supported by a spring. This does help to accepting the drum.

Push the Mobile-Karrier near to the drum that shall be lifted. While pulling the location levers (Part No. 10), turn the handle (Part No. 4) to locate supporting hoop (Part No. 3) in the middle of the drum.

Release the location levers (Part No. 10) to lock the handle at this appropriate position.

Turn the fastening lever (Part No. 6) counter-clockwise to make its teeth upward. Fasten the chain (Part No. 7) and insert the chain into the groove on the fastening lever (Part No. 6). Then turn the lever (Part No. 6) clockwise quickly to make chain (Part No. 7) embay the drum. Please make sure that the fastening lever (Part No.6) is firmly locked by the pawl (Part No. 14).

## **2. Lifting drum**

Press the handle (Part No. 4) and the drum will be lifted. When the drum is lifted to the required position, release the handle (Part No. 4) and the drum will be locked.



## **3. Transportation**

Push/haul the handle (Part No. 4) to move the Mobile-Karrier to the destination. (Of course, if necessary, operator can turn the handle to change the Mobile-Karrier's moving direction.)

## **4. Lower & release the drum**

Press the handle (Part No. 4) slightly, and pull the location levers (Part No. 10) at the same time. Then slowly lift the handle (Part No. 4) so as to lower the drum. When the drum reaches a firm surface release the location levers (Part No. 10).



Turn the fastening lever (Part No. 6) clockwise slightly so that the pawl (Part No 14.) disengages. Release the fastening lever (Part No. 6). Take the chain (Part No. 7) out the groove on the fastening lever and hang it on the hook (Part No. 17).

Move away the Mobile-Karrier.

## 5. Rotate the drum

The Mobile-Karrier can rotate the drum from vertical to horizontal position according to actual demand. Do the operation as follows.

Disengage the location pins (Part No. 5) and in the meantime turn the drum by 90° by hand.

Turn the location pins so as to insert them into the corresponding holes to lock the drum in the horizontal position.

**Note:** Before rotating the drum, press/lift the handle (Part No. 4) to an appropriate height in case the drum bumps the ground.



## 6. Adjustment

If the supporting hoop is too high to hold the middle of the drum while the handle (Part No. 4) is lifted to its max. height, it is necessary to choose another appropriate hole on the handle.

If the drum cannot be lifted to required height while the handle (Part

No. 4) is pressed to reach its min. height, it is necessary to choose another appropriate hole on the lifting arm (Part No. 12).

Pull the location levers (Part No. 10) and slowly lift the handle (Part No. 4) so as to lower the drum. When the drum reaches a firm surface release the small levers (Part No. 10).

Remove the chain and move the Mobile-Karrier away from the drum.

## V. Maintenance

1. Do routine check of the wearing condition of location pins (Part No. 5) and replace the worn pins in time.
2. Do routine check of chassis, front wheel and rear caster.
3. Do routine check of clamping reliability of chain.
4. Do routine check of all the connecting parts such as pins and fasteners.

## VI. Assembly

*Some necessary tools must be prepared before assembly.*

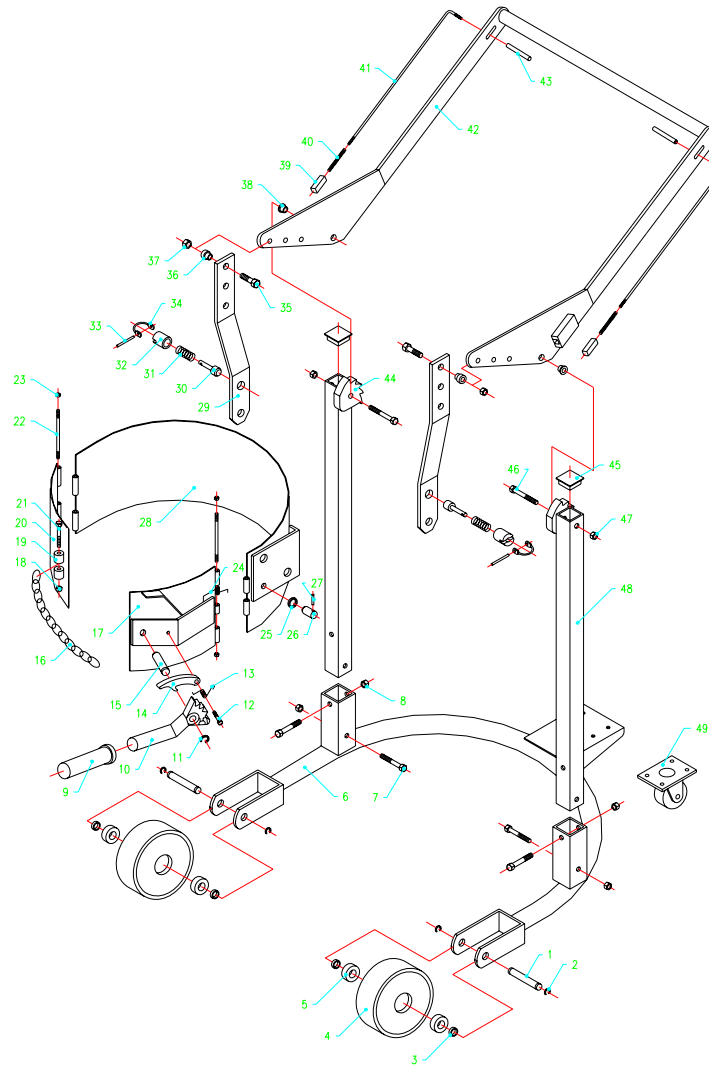
1. Take out all the subassemblies in following turns from carton.

a	Chassis
b	Mast
c	Supporting hoop
d	Handle
e	Steel harness, washers, nuts and clamp collars

2. Assemble mast (b) on chassis (a) with screws, washers and nuts.
3. Put steel harness (e) through the holes on the outsides of the lifting arms (Part No 11.) and then fix it with fasteners (e).

- Put steel harness (e) through the holes on the hanger plates (Part No 12.) and then fix it with fasteners (e).

## VII. Exploded View & Spare Parts



No.	Description	Qty	No.	Description	Qty
1.	Pin	2	26.	Pin	1
2.	Retaining ring	4	27.	Retaining pin	1
3.	Separate ring	4	28.	Supporting hoop	1
4.	Front wheel	2	29.	Hanger plate	2
5.	Bearing	4	30.	Sliding pin	2
6.	Chassis	1	31.	Spring	2
7.	Bolt	4	32.	Sliding bush	2
8.	Lock nut	4	33.	Retaining ring	2
9.	Rubber bush	1	34.	Extension ring	2
10.	Pawl	1	35.	Bolt	2
11.	Retaining ring	1	36.	Separate ring	2
12.	Bolt	1	37.	Bolt	2
13.	Spring	1	38.	Separate ring	2
14.	Dentation clip	1	39.	Sliding block	2
15.	Pin	1	40.	Spring	2
16.	Chain	1	41.	Lever	2
17.	Mobile hoop	1	42.	Lifting arm	2
18.	Nut	1	43.	Tapper pipe	2
19.	Hub for chain	2	44.	Dentation claw	2
20.	Door	1	45.	Square plug	2
21.	Bolt	1	46.	Bolt	2
22.	Pin	1	47.	Lock nut	2
23.	Lock nut	2	48.	Mast	2
24.	Spring	1	49.	Back wheel	1
25.	Washer	1	50.		