

## ES Shutter Fan

J&D Manufacturing's ES Shutter Fan is a durable agriculture grade exhaust fan perfect for barn and building peaks, greenhouses, warehouses and more. ES Shutter Fans are available without a cord, or pre-wired with a cord and plug for "No Electrician Required" installation. Fans ship fully assembled out of the box so you're up and running in no time!

### Features

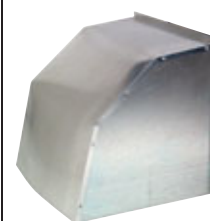
- Smooth and quiet operation
- Ships fully assembled out of the box
- Models with cord have 3-prong plug and are pre-wired for 115 Volts. No electrician required!
- Balanced 3 bladed aluminum prop with a zinc plated steel hub
- Chrome guard allows for easy cleaning and meets OSHA 1910.212(a)(5) requirements to mount at any height on inlet side of fan. (When mounted, shutter side should be 7' above ground.)
- High efficiency aluminum shutters with tie bar to reduce shutter flapping and opening on windy days
- Fully enclosed, maintenance-free, direct drive high-efficiency motors feature sealed ball bearings and a **Two Year Warranty**



**No Electrician Required for Corded Models**

### Optional Weather Hood

Shutter Fan Size	Weather Hood
10"	VFT140855
12"	VFT140855
16"	VFT140856
20"	VFT140857
24"	VFT140858
30"	VFT140859



Weather hood for exterior shutter side of fan

Part#	Size	HP	Volts	Amps <sup>NP</sup>	HZ	Ph	Spd	RPM	@0.0" SP		@0.05" SP		@0.10" SP		@0.15" SP		Rough Opening	Test #
									CFM	CFM/Watt	CFM	CFM/Watt	CFM	CFM/Watt	CFM	CFM/Watt		
<b>With Cord</b>																		
VES10C	10"	1/8	115	0.9	60	1	3	1,740	630	8.7	560	7.5	480	6.4	210	2.8	12 1/2" x 12 1/2"	13143
VES12C	12"	1/10	115	1.0	60	1	1/Var^	1,732	970	11.0	880	10.0	800	8.7	190	2.1	12 1/2" x 12 1/2"	13144
VES161C	16"	1/10	115	1.0	60	1	1/Var^	1,720	1,440	15.0	1,300	12.8	1,220	11.9	1,070	10.1	16 1/2" x 16 1/2"	13145
VES201C	20"	1/10	115	1.0	60	1	1/Var^	1,709	1,680	16.6	1,380	13.6	780	7.4	520	4.6	20 1/2" x 20 1/2"	13146
VES20C	20"	1/3	115	3.8	60	1	1/Var^	1,697	3,140	11.2	2,920	10.1	2,760	9.2	2,620	8.6	20 1/2" x 20 1/2"	13147
VES24C	24"	1/2	115	4.8	60	1	1/Var^	1,677	4,640	10.9	4,310	9.8	4,080	9.0	3,860	8.4	24 1/2" x 24 1/2"	13148
VES30C	30"	1/2	115	6.2	60	1	1	837	6,770	12.2	6,320	11.3	5,840	10.3	5,280	9.3	30 1/2" x 30 1/2"	13149
<b>Without Cord</b>																		
VES12	12"	1/10	115/230	1.0/0.5	60	1	1/Var^	1,732	970	11.0	880	10.0	800	8.7	190	2.1	12 1/2" x 12 1/2"	13144
VES161	16"	1/10	115/230	1.0/0.5	60	1	1/Var^	1,720	1,440	15.0	1,300	12.8	1,220	11.9	1,070	10.1	16 1/2" x 16 1/2"	13145
VES201	20"	1/10	115/230	1.0/0.5	60	1	1/Var^	1,709	1,680	16.6	1,380	13.6	780	7.4	520	4.6	20 1/2" x 20 1/2"	13146
VES20	20"	1/3	115/230	3.8/1.9	60	1	1/Var^	1,697	3,140	11.2	2,920	10.1	2,760	9.2	2,620	8.6	20 1/2" x 20 1/2"	13147
VES24	24"	1/2	115/230	4.8/2.4	60	1	1/Var^	1,677	4,640	10.9	4,310	9.8	4,080	9.0	3,860	8.4	24 1/2" x 24 1/2"	13148
VES243	24"	1/2	230/460	2.6/1.3	60	3	1	850	4,640	10.9	4,310	9.8	4,080	9.0	3,860	8.4	24 1/2" x 24 1/2"	N/A
VES30	30"	1/2	115/230	6.2/3.1	60	1	1	837	6,770	12.2	6,320	11.3	5,840	10.3	5,280	9.3	30 1/2" x 30 1/2"	13149
VES303	30"	1/2	230/460	2.6/1.3	60	3	1	846	6,800	14.1	6,400	13.0	5,940	12.1	5,390	10.8	30 1/2" x 30 1/2"	13150

<sup>NP</sup> Amp information as documented on motor name plate

~ These units come pre-wired for 115 Volts (electrician may rewire for 230 Volts)

^ For 50 Hz compatibility data please contact J&D Manufacturing

^ Variable speed fans require separate variable speed control to adjust fan speed.

N/A Signifies that this fan has not been tested therefore a test reference number is "not available"

**Bold red text is data based on testing performed by an accredited lab using ANSI/AMCA Standard 230-12.**

Due to our continual effort to provide the best products available and adhere to market conditions; literature, products, prices and availability are subject to change without notice.