

**SPECIFICATION:**

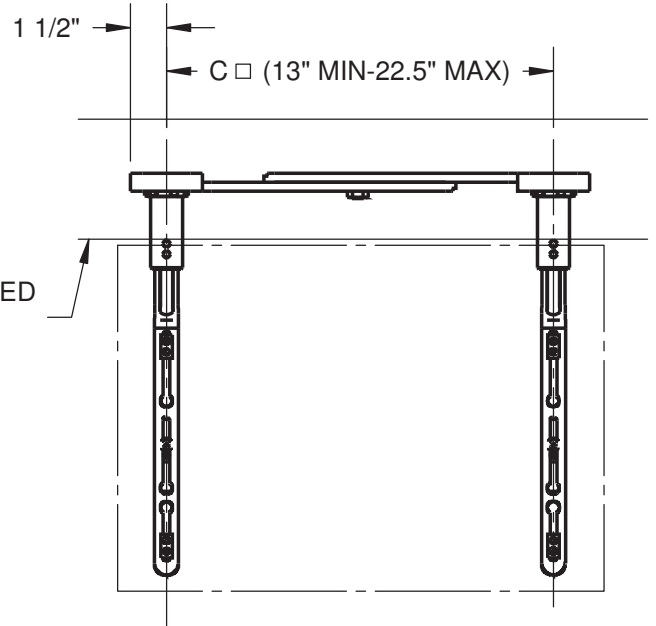
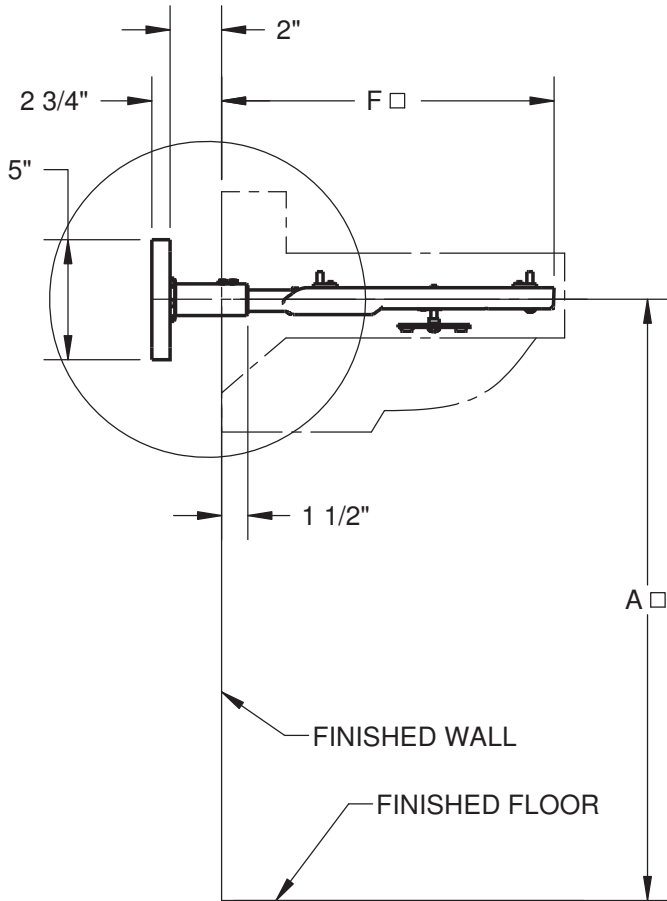
JOSAM 17120 SERIES WALL-MOUNTED, SINGLE LAVATORY CARRIER WITH CONCEALED ARMS, LEVELING AND SECURING SCREWS, AND ADJUSTABLE WALL PLATE.

**LAVATORY CARRIER**

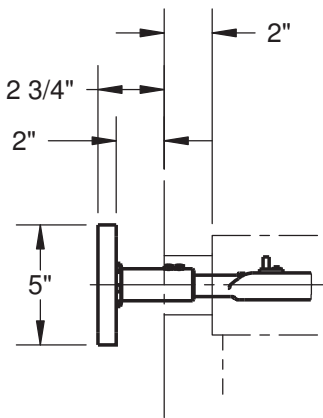
WALL-MOUNT  
CONCEALED ARM

SERIES

**17120**



□ DENOTES VARIABLE. DIMENSION DEPENDS ON FIXTURE. STANDARD ADJUSTABLE SLEEVE IS 4" LONG



-75 OPTION  
CHROME PLATED  
ESCUTCHEON

-BP*	WITH BACK PLATES
-MMB*	WITH MOVABLE MOUNTING BRACKETS
-10*	EXTENSION SLEEVES LONGER THAN STANDARD (SPECIFY WALL THICKNESS)
-75	2" CHROME PLATED ESCUTCHEONS
-76	4" CHROME PLATED ESCUTCHEONS
-77	6" CHROME PLATED ESCUTCHEONS

\* SEPARATE SUBMITTAL FOR THIS OPTION AVAILABLE

MANUFACTURER

NUMBER

SIZE

NAME

DIMENSIONS

A \_\_\_\_\_

C \_\_\_\_\_

F \_\_\_\_\_

RIM HEIGHT  
BASED ON "A" DIM SHOWN

DATE OF LAST CHANGE: 02/21/14

DIMENSIONS ARE SUBJECT TO MANUFACTURERS TOLERANCES AND CHANGE WITHOUT NOTICE. WE CAN ASSUME NO RESPONSIBILITY FOR USE OF SUPERSEDED OR VOID DATA.

**JOSAM COMPANY**  
MICHIGAN CITY, INDIANA

NOTES