

**SPECIFICATION:**

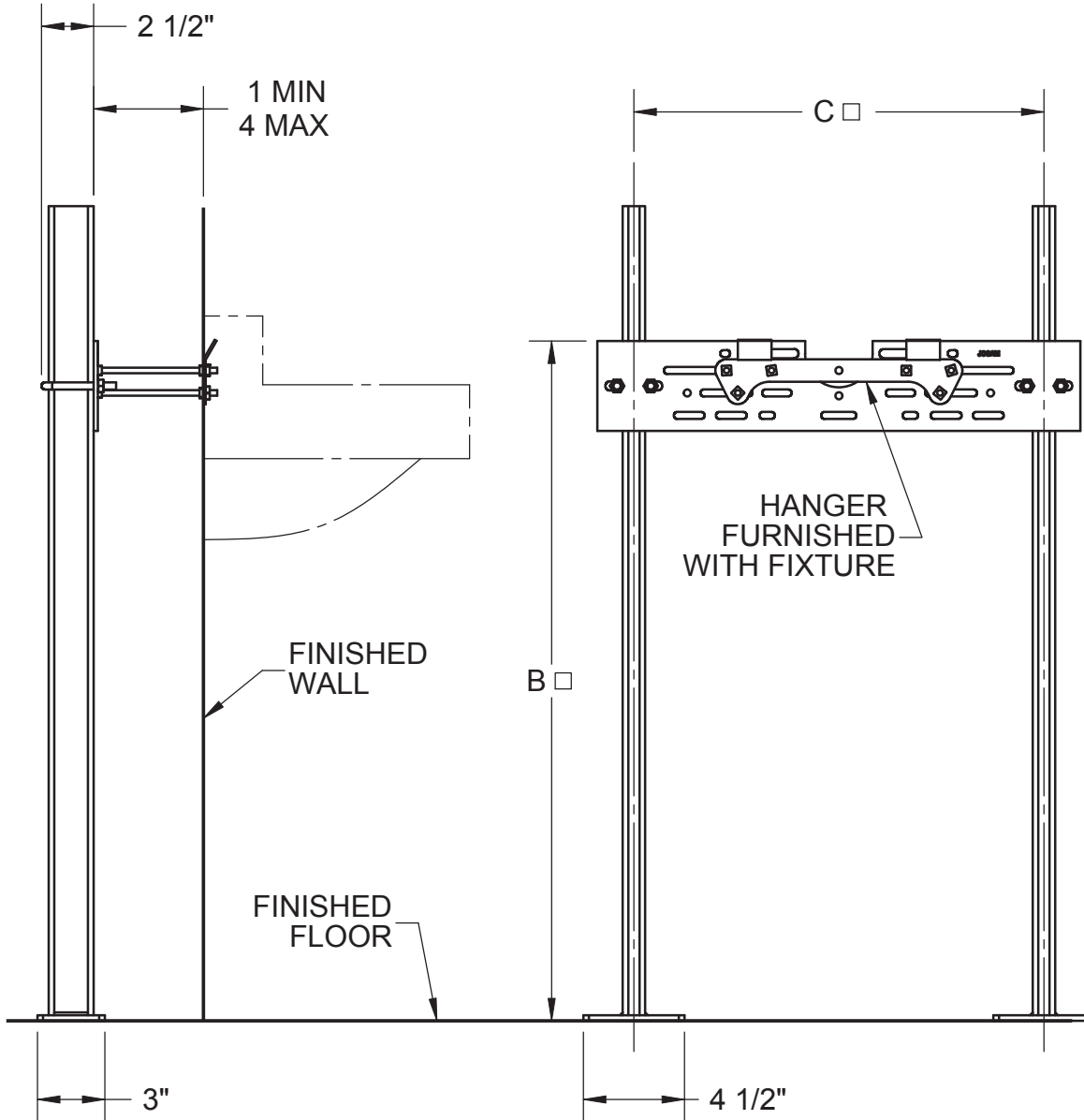
JOSAM 17550 SERIES FLOOR-MOUNTED, SINGLE LAVATORY CARRIER WITH HANGER PLATE, ADJUSTABLE SUPPORTING RODS, STRUCTURAL UPRIGHTS AND WELDED FEET.

**LAVATORY CARRIER  
FLOOR-MOUNT HANGER PLATE**

SERIES **17550**

REUSABLE ALIGNMENT TOOL AVAILABLE

□ VARIABLE - DEPENDS ON FIXTURE EXCEPT WHEN STANDARD PLATE IS FURNISHED C = 18-1/4"



MANUFACTURER \_\_\_\_\_

NUMBER \_\_\_\_\_

SIZE \_\_\_\_\_

NAME \_\_\_\_\_

DIMENSIONS

B \_\_\_\_\_

C \_\_\_\_\_

RIM HEIGHT \_\_\_\_\_  
BASED ON "A" DIM SHOWN

RECOMMEND ALL FEET BE SECURED TO FLOOR WITH 1/2" BOLTS AND ANCHORS BY OTHERS.

-BB	BACK-TO-BACK CARRIER*
-CL	CORNER LAVATORY CARRIER*
-UR	URINAL CARRIER*
-WC	WATER COOLER CARRIER*

-WCBL	WATER COOLER BI-LEVEL CARRIER*
-10	STUDS FOR WALLS OVER 4" (SPECIFY WALL THICKNESS)
-60	VALVE PLATE FOR ATTACHING TO UPRIGHT

\*SEPERATE SUBMITTAL FOR THIS OPTION AVAILABLE

DATE OF LAST CHANGE: 8/11/2009

DIMENSIONS ARE SUBJECT TO MANUFACTURERS TOLERANCES AND CHANGE WITHOUT NOTICE. WE CAN ASSUME NO RESPONSIBILITY FOR USE OF SUPERSEDED OR VOID DATA.

**JOSAM COMPANY**  
MICHIGAN CITY, INDIANA

NOTES