

Explosion Proof Emergency Fluorescent light Combination - 4 foot - 2 T8 lamps - Class I, Div I

Part #: EPL-EMG-48-2L-T8

**Made in the USA**

The Larson Electronics EPL-EMG-48-2L-T8 Explosion Proof Emergency Lights & Fluorescent light Combination is U.S./Canada U.L. approved Class 1 Division 1, Class 1 Division 2 and ideal for hazardous locations where flammable chemical/petrochemical vapors exist or have the potential to exist.

The EPL-EMG-48-2L-T8 is a 4 foot long, 2 lamp, UL listed Class 1 Division 1 and Class 2 Division 1 and 2 explosion proof fluorescent light which is equipped with an added battery backup providing 90 minutes of emergency runtime. This T6 temperature rated fixture comes standard with two T8 fluorescent lamps which produce a combined 5,500 lumens of light. This fixture is multi-voltage capable and provides operators in hazardous locations with a reliable and durable lighting solution that provides explosion proof protection along with the security of an emergency battery backup.

[Click Photo to Enlarge](#)[Click Photo to Enlarge](#)[Click Photo to Enlarge](#)

This fluorescent light works, mounts and is wired like our EPL-48-2L explosion proof fluorescent light fixtures. The main difference is that we attach an extra Bodine ballast box to the unit that adds emergency light functionality to the fixture. This explosion proof emergency light will run the standard 90 minutes after power is lost. The light recharges the battery once electrical power is restored. Standard configuration includes a single emergency ballast that will run a single lamp at 2750 lumens for 90 minutes. For an additional charge, a second ballast can be added to run a second lamp for 5500 total lumens output for 90 minutes. The battery backup unit includes a switched leg for turning the light fixture on/off without kicking the unit into emergency mode.

NOTE ON LAMPS: This unit comes equipped with an electronic ballast and F32-T8/841 bulbs which produce 2750 lumens per bulb and have a rated lifespan of 24,000 hours.

Additional mounting options: Unless otherwise specified, our standard, most popular configuration is the bracket end mounting shown in the photos above. We also offer a pendant mount for those needing to suspend the fixture away from the ceiling surface (i.e. suspend from pipe or conduit).

Standard Bracket Mounts: Each bracket is cinched to the bracket mounting peg on each side of the light. The angle of the bracket is set by tightening two cap screws on either side of the bracket. The cap screws act as a set screw. The bracket itself is mounted via a single bolt hole at the top the bracket. There are two brackets, one on each end of the light. Once the brackets are mounted to a surface (ceiling, floor or wall), the light fixture can be removed from the brackets by loosening the cap screws that hold the bracket to the mounting peg. The first picture shown above illustrates the ballast side bracket and also shows the access caps for changing the bulbs. The second picture shows the bracket at the opposite end of the fluorescent light.

Made in USA Quality

1. Each unit dielectrically tested.
2. Fixture arrives assembled and lamped to reduce installation time and cost. Adjustable mounting brackets enable the operator to choose any mounting angle for the fixture, where other models may only offer one or three choices.
3. Fixture constructed of extruded corrosion resistant copper free aluminum alloy.
4. Over-sized, finned ballast housing for 800 mA fixtures provides more heat dissipation and extends ballast life. Larger ballast box accommodates High Output lamp ballasts. Ballast housing easily accessible and externally mounted. Top and bottom covers secured with nuts and bolts, instead of threaded through holes, which can be damaged with dirt.
5. Heavy gauge extruded aluminum reflectors with high gloss reflective finish. Resists dents and corrosion.
6. A wrench is used to unscrew the end caps for relamping the fixture, while other models require the "tap and knock off" method to loosen the end cap.
7. Explosion proof, impact and heat resistant Pyrex tubes provide lamp protection.

Lamps

F32-T8/841 – 32 watt, 2950 lumens per bulb, 30,000 hours life, 4100 Kelvin color (Suffix –T8)

Specifications / Additional Information**EPL-EMG-48-2L-T8 Explosion Proof****UL Listing:** United States - Canada**Dimensions:** W-11.25" L-52" H-8.5 "**Weight:** 65 Lbs**Voltage:** Multi- 120V-60hz 220V-50hz 240V-60hz 277V-60hz**Total Watts:** 64 watts**Total Lumens:** **F32-T8/841 Bulbs** 5,900**Color Temp:** 4100K**Beam Angle:** N/A**Lamp Life Expectancy:** **F32-T8/841 Bulbs** 30,000 Hours**Luminous Efficacy:** **F32-T8/841 Bulbs** 92.18 Lm/W**Ambient Operating Temp Range** -30° C to 70° C**Operating Temp Range:** T6 Rated**Minimum Operating Temp:** -30° C**Maximum Case Temp:** 90° C**Mounting:** Bracket Standard - Pendant Optional**Wiring Hub:** 1/2 inch threaded**Warranty:** 5 Years***U.L Approval:** [U.S Certificate](#) [Canada Certificate](#)

*5 year warranty replacement on this LED light (or LED bulbs for light fixtures with removable LED bulbs). After 30 days, the customer ships the failed LED light and/or LED bulb to Larson Electronics at their expense. If the failure is a manufacturer defect, we will ship a new replacement to the customer. If failure occurs within 30 days of receipt, Larson Electronics will provide a return label via email to the customer. When the failed light is returned, Larson Electronics will ship a new replacement. Please click here to see our 5 Year Warranty pamphlet.

Scroll Down to Purchase- Please Note: 2 day lead time on this light.

[Part #: EPL-EMG-48-2L-T8 \(48472\)](#)

U.L. Ratings

Class 1 Division 1, Groups C and D

Class 1 Division 2, Group A,B,C,D

UL 595 Outdoor Marine Type (Saltwater)

UL 844, 924

UL 1598 Marine Type

Class II Division 1- 2, Groups E,F,G

UL Certified Canadian Standards

UL listed for Paint Spray Booths*

Switch Leg for Powering Light On/Off

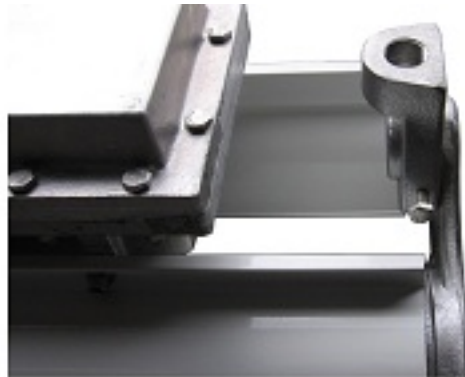
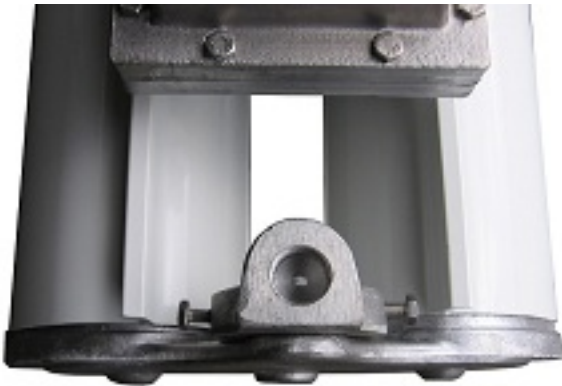
Special Orders- Requirements

Contact us for special requirements

Toll Free: 1-800-369-6671**Intl:** 1-903-498-3363**E-mail:** sales@larsonelectronics.com



Surface Mount



Pendant Mount

Links (Click on the below items to view):

- [SpecSheet French](#)
- [SpecSheet Arabic](#)
- [Dimensional Drawing](#)
- [Manual](#)
- [STEP](#)
- [EASM](#)