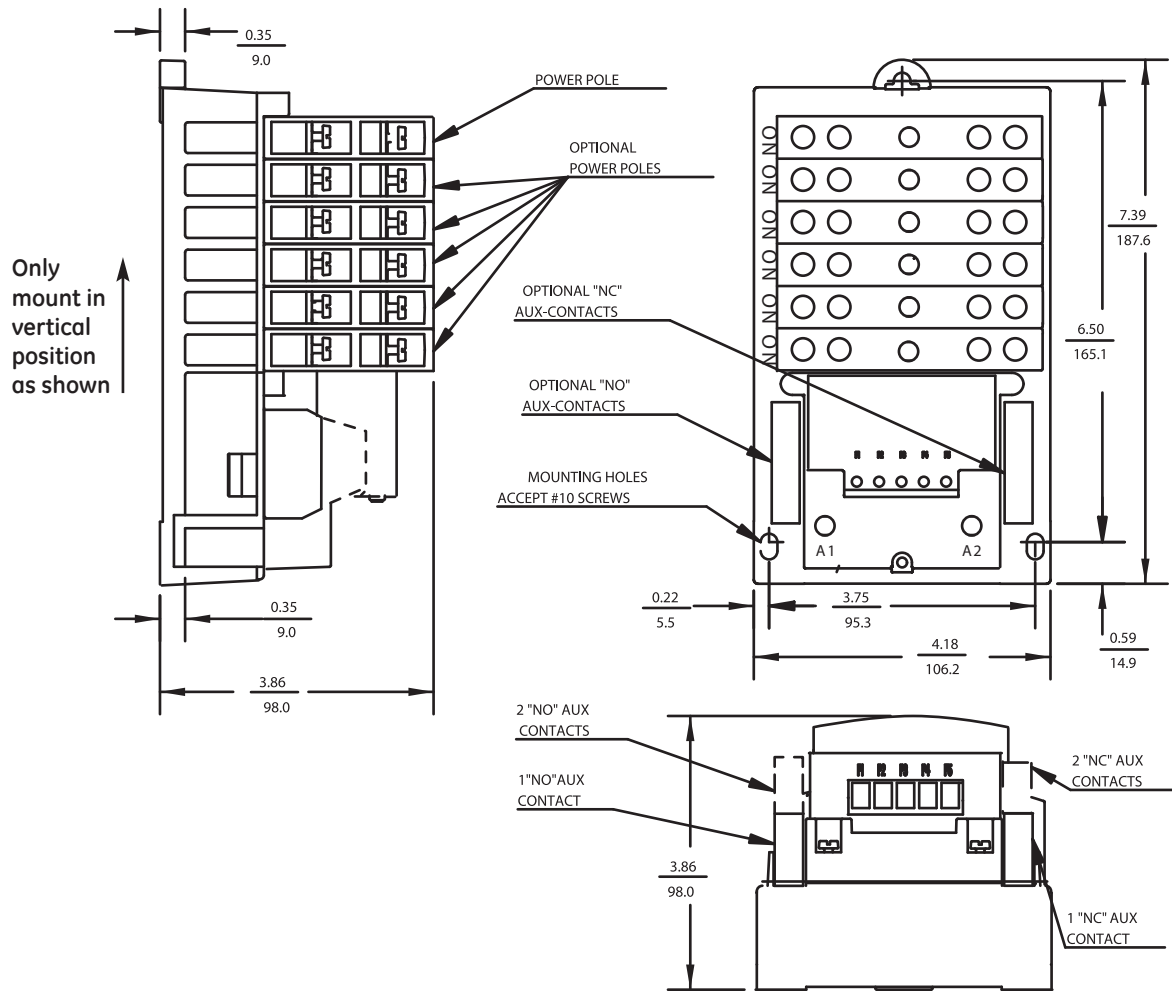


Lighting Contactors

CR463L, CR463M

Outlines and Dimensions (mm) For Estimating Only



Contactor CR463L and CR463M, Drawing #55-217114P01

Features:

- 1 Mounting Dimensions remain the same for 1 to 12 Poles
- 2 Line and Load terminals are interchangeable
- 3 Up to 2NO and 2NC auxiliary contacts can be added onto the base product
- 4 Same Power Pole can be configured as NO type or NC type in pole positions 1-4; NO type only in positions 5-6.

