



Refrigeration
Solutions
to Meet
Tomorrow's
Standards

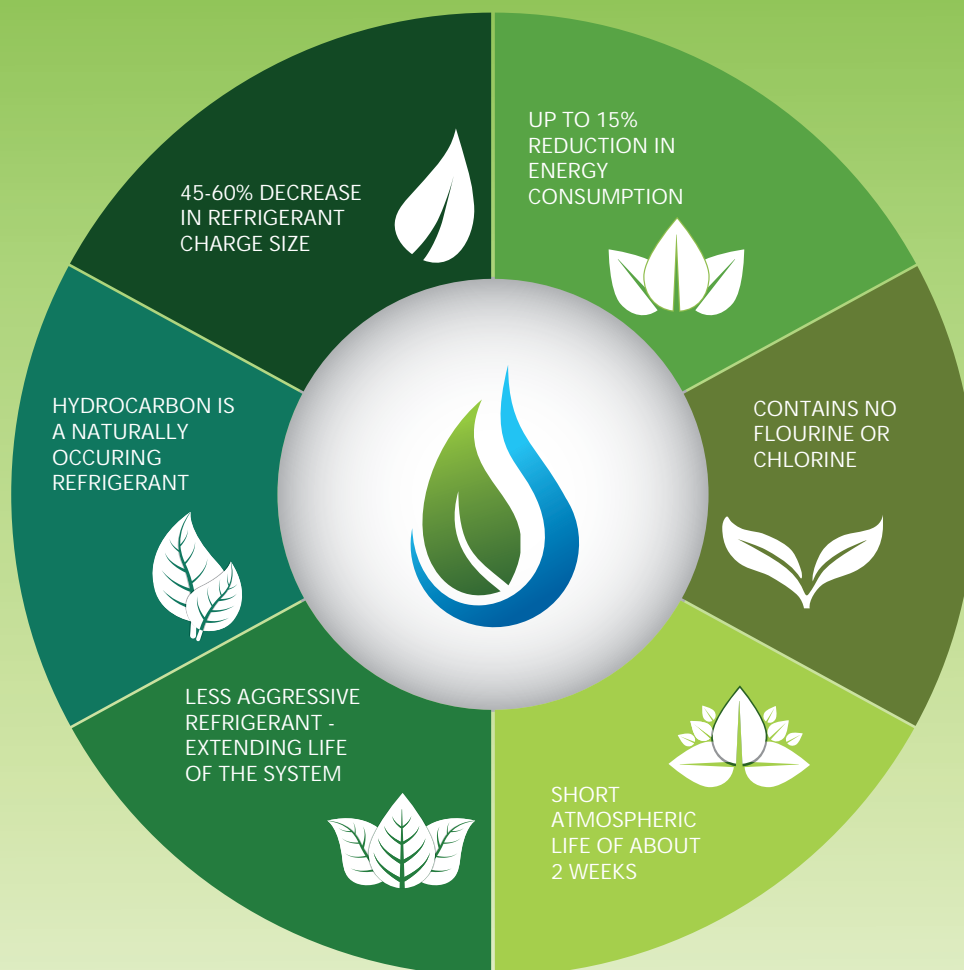


Laboratory Refrigerators and Freezers

pharmaceutical
laboratory
biotech
clinical trials
analytical testing

Going Green. What does it mean?

The Advantages of Hydrocarbon Refrigerants



Evolving Technology To Reduce Ozone Depletion and Energy Usage

HC's can absorb more heat faster, resulting in quicker temperature recovery and lower energy consumption.

HC refrigerant's heat retention is approximately 90% greater than R134a and 140% greater than R404a with lower viscosity.

Hydrocarbon refrigerant's thermodynamic properties are superior to both R134a and R404a.



1 TempLog Premier

2 Premier

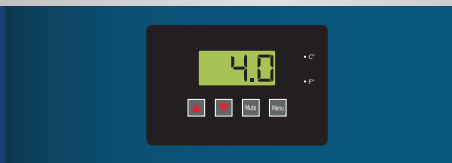
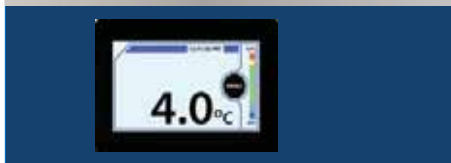
3 Standard



- Touch screen display
- Digital microprocessor
- Digital temperature display
- Audible and visual alarms
- Digital 24-hour temp. chart
- Digital data logging
- USB port for data transfer
- 4-20mA output
- Remote alarm contacts
- Door ajar alarm
- Low battery alarm
- Operation indicator
- Temp. scale bar display
- Sample temperature display

- Bi-Color LED display
 - Digital microprocessor
 - Digital temperature display
 - Audible and visual alarms
 - Resettable Min/Max
 - Remote alarm contacts
 - Power failure alarm*
 - Sensor error alarm
 - Alarm mute w/ringback*
 - Sample temperature display
- *Not available on all models*
See specs for additional information*

- Digital temperature display*
 - Digital microprocessor*
 - Audible and visual alarms*
 - Resettable Min/Max*
 - Remote alarm contacts*
- *Not available on all models*
See specs for additional information*



The TempLog Premier Series refrigerators and freezers are purpose built for scientific and medical applications requiring superior temperature management and state of the art product security and data logging.

The Premier Series refrigerators and freezers are also purpose built for critical cold storage applications, but where built-in data logging functionality may not be a necessity.

The Standard Series refrigerators and freezers can help meet the demand of scientific and medical applications at budget-easing price points or satisfy any general purpose cold storage needs.



05 Laboratory Refrigerators

13 Chromatography Refrigerators

19 Manual Defrost Freezers

25 Auto Defrost Freezers

27 Stainless Steel Refrigerators & Freezers

33 Undercounter Refrigerators & Freezers

39 Pass Thru Refrigerators & Freezers

41 Flammable Storage Refrigerators & Freezers

47 Hazardous Location (XP) Refrigerators & Freezers

49 Compact Refrigerators

51 Dual Temperature Refrigerator/Freezer Combos



Laboratory Refrigerators

TempLog Premier Glass & Solid Door Laboratory Refrigerators

TempLog Premier Glass & Solid Door Laboratory Refrigerators

The TempLog Premier Glass & Solid Door Laboratory Refrigerators are purpose built for scientific and medical applications.

Units feature a digital microprocessor temperature controller, a forced air directional refrigeration system, and an automatic cycle-defrost design prevents product damaging temperature spikes.

Sample simulated temperature display to show real-time product temperatures.



ABT-HC-72-TS

ABT-HC-47-TS

Environmentally friendly, natural hydrocarbon (HC) refrigerants which vastly reduce global-warming potential while meeting new EPA/SNAP mandates.

Model	Cu. Ft.	Defrost	Doors	Shelves	W"	D"	H"	RL	H.P.	Amps
ABT-HC-19-TS	19	Cycle	1 Swing Glass	4 Adj	27	26 3/8	78 5/8	R290a	1/3	5.4
ABT-HC-19-TS-LH	19	Cycle	1 Swing Glass	4 Adj	27	26 3/8	78 5/8	R290a	1/3	5.4
ABT-HC-23-TS	23	Cycle	1 Swing Glass	4 Adj	27	31 3/8	78 5/8	R290a	1/3	5.4
ABT-HC-26-TS	26	Cycle	1 Swing Glass	4 Adj	30	31 3/8	78 5/8	R290a	1/3	5.4
ABT-HC-47-TS	47	Cycle	2 Slide Glass	8 Adj	54 1/8	33 3/8	78 5/8	R290a	1/2	9.6
ABT-HC-49-TS	49	Cycle	2 Swing Glass	8 Adj	54 1/8	31 3/8	78 5/8	R290a	1/2	8.5
ABT-HC-69-TS	69	Cycle	3 Slide Glass	12 Adj	78 1/8	33 3/8	78 5/8	R290a	3/4	6.5
ABT-HC-72-TS	72	Cycle	3 Swing Glass	12 Adj	78 1/8	33 3/8	78 5/8	R290a	1/2	8.5



- Microprocessor temperature controller
- Adjustable operating temperature range: 1°C - 10°C
- Touch Screen Digital Temperature Display and Alarm Module
- Password-protected control panel
- Sample simulated digital temperature display; 1° Resolution, adjustable temperature display in Celsius or Fahrenheit
- Active temperature scale bar display
- Resettable 1-point min/max history
- Digital 24-hour temperature chart
- Temperature data logging
- USB port for data transfer and software updates
- Real-time operational display clock
- 4-20mA output
- Electronic troubleshooting guide
- Electronic QR Code to access Owner's Manual & technical support contact information
- Adjustable alarm volume
- Audible and visual high/low temperature alarms
- Sensor error alarm
- Power failure alarm



The all-new Touch Screen temperature display and alarm module offers industry-leading product security real-time sample simulated temperatures are constantly displayed, logged and supported by audible and visual alarms, remote alarm contacts, a 4-20mA output and an access port. A USB port is provided for easy data transfer.



ABT-16S-TS



ABT-36S-TS

Standard features:
Keyed door locks.

Model	Cu. Ft.	Defrost	Doors	Shelves	W"	D"	H"	RL	H.P.	Amps
ABT-12S-TS	12	Cycle	1 Swing Solid	3 Adj	25	29 3/4	63 3/4	R134a	3/8	6
ABT-16S-TS	16	Cycle	1 Swing Solid	3 Adj	25	29 3/4	77	R134a	3/8	6
ABT-23S-TS	23	Cycle	1 Swing Solid	4 Adj	26 7/8	34 3/4	79 3/4	R134a	3/8	6
ABT-26S-TS	26	Cycle	1 Swing Solid	4 Adj	28 3/8	36 1/2	79 3/4	R134a	3/8	6
ABT-36S-TS	36	Cycle	2 Swing Solid	8 Adj	39 5/8	34 3/4	79 3/4	R134a	1/2	9
ABT-49S-TS	49	Cycle	2 Swing Solid	8 Adj	54	34 3/4	79 3/4	R134a	1/2	7
ABT-72S-TS	72	Cycle	3 Swing Solid	12 Adj	81	34	79 3/4	R134a	3/4	10

- Swivel casters (adds 4" to height)
- Door ajar alarm
- Low battery alarm
- Operation indicator
- Alarm validation (audible, visual, and remote alarm)
- Alarm mute with ring back
- Remote alarm contacts
- Keyed door lock
- Magnetic door gasket for positive seal
- Heavy duty door handle
- LED interior lights are safety shielded and switch controlled
- Casters with footed brake
- Probe access port (3/8")
- White powder-coated steel exterior and interior
- CFC-free refrigerant (R134a), foam insulation and packaging
- Three year parts and labor warranty, plus an additional two year compressor parts warranty
- Quality certified with 100% unit temperature testing
- Cycle defrost
- UL/C-UL listed

Premier Glass & Solid Door Laboratory Refrigerators

Premier Glass & Solid Door Laboratory Refrigerators

Features a microprocessor temperature controller and display, allowing for precise temperature control, verification and recovery versus mechanical style thermostats. An interior fan driven, forced-draft air circulation system provides excellent temperature uniformity and recovery after door openings. Critical samples and supplies are security backed with an extensive package of audible and visual alarms.



Available in swing or sliding glass door.

ABT-HC-47

Model	Cu. Ft.	Defrost	Doors	Shelves	W"	D"	H"	RL	H.P.	Amps
ABT-HC-19	19	Cycle	1 Swing Glass	4 Adj	27	26 3/8	78 5/8	R290a	1/3	5.4
ABT-HC-19-LH	19	Cycle	1 Swing Glass	4 Adj	27	26 3/8	78 5/8	R290a	1/3	5.4
ABT-HC-23	23	Cycle	1 Swing Glass	4 Adj	27	31 3/8	78 5/8	R290a	1/3	5.4
ABT-HC-26	26	Cycle	1 Swing Glass	4 Adj	30	31 3/8	78 5/8	R290a	1/3	5.4
ABT-HC-33	33	Cycle	2 Slide Glass	8 Adj	39 1/2	33 3/8	78 5/8	R290a	1/3	6.2
ABT-HC-35	35	Cycle	2 Swing Glass	8 Adj	39 1/2	31 3/8	78 5/8	R290a	1/3	6.2
ABT-HC-47	47	Cycle	2 Slide Glass	8 Adj	54 1/8	33 3/8	78 5/8	R290a	1/2	9.6
ABT-HC-49	49	Cycle	2 Swing Glass	8 Adj	54 1/8	31 3/8	78 5/8	R290a	1/2	8.5
ABT-HC-69	69	Cycle	3 Slide Glass	12 Adj	78 1/8	33 3/8	78 5/8	R290a	3/4	6.5
ABT-HC-72	72	Cycle	3 Swing Glass	12 Adj	78 1/8	33 3/8	78 5/8	R290a	1/2	8.5



- Microprocessor Temperature Controller
- Adjustable operating temperature range: 1° -10°C
- Standard Digital Temperature Display and Alarm Module
- Sample simulated digital temperature display; .1° Resolution
- Adjustable temperature display in Celsius or Fahrenheit
- Audible and visual high/low temperature alarms
- Sensor error alarm
- Power failure alarm
- Resettable 1-point Min/Max History
- Remote alarm contacts
- Alarm validation (audible, visual, and remote alarm)
- Alarm mute with ring back
- Keyed door lock
- Magnetic door gasket for positive seal



The Premier Laboratory Refrigerators are also purpose built for critical cold storage applications, but where built-in data logging functionality may not be a necessity.

The all-new temperature display and alarm module offers an array of robust security features with a monitoring and alarm system that is 100% independent of a microprocessor temperature controller.

Large, Bi-color LED sample temperature display and alarm.



ABT-12S

ABT-16S

ABT-36S

Model	Cu. Ft.	Defrost	Doors	Shelves	W"	D"	H"	RL	H.P.	Amps
ABT-12S	12	Cycle	1 Swing Solid	3 Adj	25	29 3/4	63 3/4	R134a	3/8	6
ABT-16S	16	Cycle	1 Swing Solid	3 Adj	25	29 3/4	77	R134a	3/8	6
ABT-23S	23	Cycle	1 Swing Solid	4 Adj	26 7/8	34 3/4	79 3/4	R134a	3/8	6
ABT-26S	26	Cycle	1 Swing Solid	4 Adj	28 3/8	36 1/2	79 3/4	R134a	3/8	6
ABT-36S	36	Cycle	2 Swing Solid	8 Adj	39 5/8	34 3/4	79 3/4	R134a	1/2	9
ABT-49S	49	Cycle	2 Swing Solid	8 Adj	54	34 3/4	79 3/4	R134a	1/2	7
ABT-72S	72	Cycle	3 Swing Solid	12 Adj	81	34	79 3/4	R134a	3/4	10

- Swivel Casters (adds 4" to height)
- Heavy duty door handle
- LED interior lights are safety shielded and switch controlled
- Casters with footed brake
- probe access port (3/8")
- White powder-coated steel exterior and interior
- CFC-free refrigerant (R134a), foam insulation and packaging

- Two year parts and labor warranty, plus an additional three compressor parts warranty
- Quality certified with 100% unit temperature testing
- Cycle defrost
- UL/C-UL listed

Standard Series Glass & Solid Door Laboratory Refrigerators

Standard Series Glass & Solid Door Laboratory Refrigerators

The all-new Standard Series Glass & Solid Door Laboratory Refrigerators are purpose built for scientific and medical applications. To improve performance over past solid door general purpose units, the new Standard Series Glass & Solid Door Laboratory Refrigerators feature a digital microprocessor temperature controller allowing for the precise temperature management necessary for critical samples and supplies. A forced air directional refrigeration system provides superior temperature uniformity and recovery after door openings. An automatic cycle-defrost design prevents product damaging temperature spikes.

The all-new temperature display and alarm module offers product security with a monitoring and alarm system. Real-time sample simulated temperatures are constantly displayed and supported by audible/visual high and low temperature alarms. Remote alarm dry contacts and an access port are provided to simplify connections to existing facility monitoring systems.



ABT-LS-12

ABT-LS-23

Model	Cu. Ft.	Defrost	Doors	Shelves	W"	D"	H"	RL	H.P.	Amps
ABT-LS-12	12	Cycle	1 Swing Glass	3 Adj	25	29 3/4	63 3/4	R134a	3/8	6
ABT-LS-16	16	Cycle	1 Swing Glass	3 Adj	25	29 3/4	77	R134a	3/8	6
ABT-LS-23	23	Cycle	1 Swing Glass	4 Adj	26 7/8	34 3/4	79 3/4	R134a	3/8	6
ABT-LS-26	26	Cycle	1 Swing Glass	4 Adj	28 3/8	36 1/2	79 3/4	R134a	3/8	6
ABT-LS-33	33	Cycle	2 Slide Glass	8 Adj	39 5/8	33 1/4	79 3/4	R134a	3/8	6
ABT-LS-36	36	Cycle	2 Swing Glass	8 Adj	39 5/8	34 3/4	79 3/4	R134a	1/2	9
ABT-LS-47	47	Cycle	2 Slide Glass	8 Adj	54	33 1/4	79 3/4	R134a	1/2	7
ABT-LS-49	49	Cycle	2 Swing Glass	8 Adj	54	34 3/4	79 3/4	R134a	1/2	7
ABT-LS-69	69	Cycle	3 Slide Glass	12 Adj	81	33 1/4	79 3/4	R134a	3/4	10
ABT-LS-72	72	Cycle	3 Swing Glass	12 Adj	81	34	79 3/4	R134a	3/4	10

- Microprocessor temperature controller
- Digital temperature display
- Audible and visual high and low temperature alarms
- Remote alarm contacts
- Adjustable operating temperature: 1°C to 10°C
- Magnetic door gasket for positive seal
- Heavy duty door handle
- Casters with footed brake



The Standard Laboratory Refrigerators take a large step forward in performance from past solid door general purpose units; offering a digital temperature display and alarm module coupled with a microprocessor temperature controller.



°C/°F convertible temperature display.

ABT-LS-16

ABT-LS-36

Model	Cu. Ft.	Defrost	Doors	Shelves	W"	D"	H"	RL	H.P.	Amps
ABT-SLS-12	12	Cycle	1 Swing Solid	3 Adj	25	29 3/4	63 3/4	R134a	3/8	6
ABT-SLS-16	16	Cycle	1 Swing Solid	3 Adj	25	29 3/4	77	R134a	3/8	6
ABT-SLS-23	23	Cycle	1 Swing Solid	4 Adj	26 7/8	34 3/4	79 3/4	R134a	3/8	6
ABT-SLS-26	26	Cycle	1 Swing Solid	4 Adj	28 3/8	36 1/2	79 3/4	R134a	3/8	6
ABT-SLS-36	36	Cycle	2 Swing Solid	8 Adj	39 5/8	34 3/4	79 3/4	R134a	1/2	9
ABT-SLS-49	49	Cycle	2 Swing Solid	8 Adj	54	34 3/4	79 3/4	R134a	1/2	7
ABT-SLS-72	72	Cycle	3 Swing Solid	12 Adj	81	34	79 3/4	R134a	3/4	10

- LED interior lights are safety shielded and switch controlled
- Probe access port (3/8")
- Powder coated steel white interior and exterior
- High density urethane foam cabinet insulation

- CFC-free refrigerant (R134a), foam insulation and packaging
- One year parts and labor warranty, plus an additional four year compressor parts warranty
- UL/C-UL listed





Chromatography Refrigerators

TempLog Premier Chromatography Refrigerators

TempLog Premier Chromatography Refrigerators

The TempLog Premier Glass door Chromatography Refrigerators are purpose built for scientific and medical applications. Units feature a digital microprocessor temperature controller allowing for the precise temperature management necessary for critical samples and supplies. A forced air directional refrigeration system provides superior temperature uniformity and recovery after door openings. An automatic cycle-defrost design prevents product damaging temperature spikes

The all-new Touch Screen temperature display and alarm module offers the latest in advanced temperature control and data logging. Industry-leading product security with a monitoring and alarm system that is 100% independent of the temperature controller. Real-time sample simulated temperatures are constantly displayed, logged and supported by audible/visual high and low temperature alarms, along with power outage, sensor error and door ajar alarms, remote alarm dry contacts, a 4-20mA output and an access port are provided to simplify connections to existing facility monitoring systems. A USB port is provided for easy transfer as well as software updates.

Environmentally friendly, natural hydrocarbon (HC) refrigerants (not containing hydrofluorocarbons) vastly reduce global-warming potential (GWP) while meeting new EPA/SNAP mandates and UL, ASHRAE compliance guidelines.



ABT-HC-49C-TS

Model	Cu. Ft.	Defrost	Doors	Shelves	W"	D"	H"	RL	H.P.	Amps
ABT-HC-19C-TS	19	Cycle	1 Swing Glass	4 Adj	28	27 1/16	78 5/8	R290a	1/3	5.4
ABT-HC-23C-TS	23	Cycle	1 Swing Glass	4 Adj	28	32 1/16	78 5/8	R290a	1/3	5.4
ABT-HC-26C-TS	26	Cycle	1 Swing Glass	4 Adj	31	32 1/16	78 5/8	R290a	1/3	5.4
ABT-HC-47C-TS	47	Cycle	2 Slide Glass	8 Adj	55 1/8	34 1/16	78 5/8	R290a	1/2	9.6
ABT-HC-49C-TS	49	Cycle	2 Swing Glass	8 Adj	55 1/8	32 1/16	78 5/8	R290a	1/2	8.5
ABT-HC-69C-TS	69	Cycle	3 Slide Glass	12 Adj	79 1/8	34 1/16	78 5/8	R290a	3/4	8.5
ABT-HC-72C-TS	72	Cycle	3 Swing Glass	12 Adj	79 1/8	32 1/16	78 5/8	R290a	1/2	8.5



- Microprocessor temperature controller:
- Adjustable operating temperature range: 1°C – 10°C
- Touch Screen Digital Temperature Display and Alarm Module
- Password-protected Control Panel
- Sample simulated digital temperature display; 1° Resolution, adjustable temperature display in Celsius or Fahrenheit
- Active Temperature Scale Bar Display
- Operation indicator
- Digital 24-hour Temperature Chart
- Temperature data logging
- USB Port for Data Transfer and Software Updates
- Real-time Operational Display Clock
- 4-20mA Output
- Electronic Troubleshooting Guide
- Electronic QR Code to Access Owner's Manual & Technical Support Contact Information
- Adjustable Alarm Volume
- Audible and Visual High/Low Temperature Alarms
- Sensor Error Alarm
- Power Failure Alarm
- Door Ajar Alarm
- Low Battery Alarm



The all-new Touch Screen temperature display and alarm module offers industry-leading product security real-time sample simulated temperatures are constantly displayed, logged and supported by audible and visual alarms, remote alarm contacts, a 4-20mA output and an access port. A USB port is provided for easy data transfer.



Two 2" access ports with spring loaded self-closing metal gasketed covers.

One GFCI protected duplex electrical outlet.

ABT-HC-19C-TS

- Operation Indicator
- Alarm Validation (audible, visual, and remote alarm)
- Alarm Mute with Ring Back
- Remote Alarm Contacts
- Four adjustable shelves (adjustable in 1/2" increments)
- Keyed door lock
- Magnetic door gasket for positive seal
- Recessed door handle
- LED interior lights are safety shielded and switch controlled
- Swivel casters (adds 4" to height)
- One GFCI protected duplex electrical outlet
- Two 2" access ports with spring loaded self-closing, gasketed metal covers
- Probe access port (3/8")
- White laminated vinyl exterior
- White aluminum liner and stainless steel floor interior
- HFC-free refrigerant (R290a), foam insulation and packaging
- Three year parts and labor warranty, plus an additional two year compressor parts warranty
- Quality certified with 100% unit temperature testing
- Cycle defrost
- UL/C-UL listed

Premier Chromatography Refrigerators

Premier Chromatography Refrigerators

The Premier Chromatography Refrigerators feature a microprocessor temperature controller and display, allowing for precise temperature control, verification and recovery versus mechanical style thermostats. One interior duplex electrical outlet and two side wall port holes are provided to simplify the setup and operation of laboratory procedures. An interior fan driven, forced-draft air circulation system provides excellent temperature uniformity and recovery after door openings. Critical samples and supplies are security backed with an extensive package of audible and visual alarms.

All Premier Chromatography units require two electrical outlets.

Two 2" access ports with spring loaded self-closing metal gasketed covers.

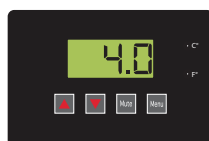


ABT-HC-49C

Model	Cu. Ft.	Defrost	Doors	Shelves	W"	D"	H"	RL	H.P.	Amps
ABT-HC-19C	19	Cycle	1 Swing Glass	4 Adj	28	27 1/16	78 5/8	R290a	1/3	5.4
ABT-HC-23C	23	Cycle	1 Swing Glass	4 Adj	28	32 1/16	78 5/8	R290a	1/3	5.4
ABT-HC-26C	26	Cycle	1 Swing Glass	4 Adj	31	32 1/16	78 5/8	R290a	1/3	5.4
ABT-HC-33C	33	Cycle	2 Slide Glass	8 Adj	40 1/2	34 1/16	82 5/8	R290a	1/3	6.2
ABT-HC-35C	35	Cycle	2 Swing Glass	8 Adj	40 1/2	32 1/16	82 5/8	R290a	1/3	6.2
ABT-HC-47C	47	Cycle	2 Slide Glass	8 Adj	55 1/8	34 1/16	78 5/8	R290a	1/2	9.6
ABT-HC-49C	49	Cycle	2 Swing Glass	8 Adj	55 1/8	32 1/16	78 5/8	R290a	1/2	8.5
ABT-HC-69C	69	Cycle	3 Slide Glass	12 Adj	79 1/8	34 1/16	78 5/8	R290a	3/4	8.5
ABT-HC-72C	72	Cycle	3 Swing Glass	12 Adj	79 1/8	32 1/16	78 5/8	R290a	1/2	8.5



- Microprocessor Temperature Controller
- Adjustable operating temperature range: 1°-10°C
- Standard Digital Temperature Display and Alarm Module
- Sample simulated digital temperature display; 1° Resolution
- Adjustable temperature display in Celsius or Fahrenheit
- Audible and visual high/low temperature alarms
- Sensor error alarm
- Power failure alarm
- Resettable 1-point Min/Max History
- Remote alarm contacts
- Alarm validation (audible, visual, and remote alarm)
- Alarm mute with ring back
- Keyed door lock
- Magnetic door gasket for positive seal
- Swivel casters (adds 4" to height)
- Recessed door handle



The Premier Chromatography Refrigerators are also purpose built for critical cold storage applications, but where built-in data logging functionality may not be a necessity.

The all-new temperature display and alarm module offers an array of robust security features with a monitoring and alarm system that is 100% independent of a microprocessor temperature controller.

One GFCI protected duplex electrical outlet.



ABT-HC-19C

- LED interior lights are safety shielded and switch controlled
- Swivel casters (adds 4" to height)
- One GFCI protected duplex electrical outlet
- Two 2" access ports with spring loaded self-closing, gasketed metal covers
- Probe access port (3/8")
- White laminated vinyl exterior
- White aluminum liner and stainless steel floor interior
- HFC-free refrigerant (R290a), foam insulation and packaging
- Two year parts and labor warranty, plus an additional three year compressor parts warranty
- Quality certified with 100% unit temperature testing
- Cycle defrost
- UL/C-UL listed

Standard Chromatography Refrigerators

Standard Chromatography Refrigerators

The Standard Chromatography Refrigerators feature a microprocessor temperature controller and display, allowing for precise temperature control, verification and recovery versus mechanical style thermostats. One interior duplex electrical outlet and one side wall port hole is provided to simplify the setup and operation of laboratory procedures. An interior fan driven, forced-draft air circulation system provides excellent temperature uniformity and recovery after door openings.

All Chromatography Plus units require two electrical outlets.



One GFCI protected duplex electrical outlet.

One 2" access port with spring loaded self-closing metal gasketed covers.

ABT-CS-49

Model	Cu. Ft.	Defrost	Doors	Shelves	W"	D"	H"	RL	H.P.	Amps
ABT-CS-16	16	Cycle	1 Swing Glass	3 Adj	25	29 3/4	77	R134a	3/8	6
ABT-CS-23	23	Cycle	1 Swing Glass	4 Adj	26 7/8	34 3/4	79 3/4	R134a	3/8	6
ABT-CS-26	26	Cycle	1 Swing Glass	4 Adj	28 3/8	36 1/2	79 3/4	R134a	3/8	6
ABT-CS-33	33	Cycle	2 Sliding Glass	8 Adj	39 5/8	33 1/4	79 3/4	R134a	3/8	6
ABT-CS-36	36	Cycle	2 Swing Glass	8 Adj	39 5/8	34 3/4	79 3/4	R134a	1/2	9
ABT-CS-47	47	Cycle	2 Sliding Glass	8 Adj	54	33 1/4	79 3/4	R134a	1/2	7
ABT-CS-49	49	Cycle	2 Swing Glass	8 Adj	54	34 3/4	79 3/4	R134a	1/2	7
ABT-CS-69	69	Cycle	3 Sliding Glass	12 Adj	81	33 1/4	79 3/4	R134a	3/4	10
ABT-CS-72	72	Cycle	3 Swing Glass	12 Adj	81	34	79 3/4	R134a	3/4	10

- Microprocessor temperature controller
- Digital temperature display
- Audible and visual high and low temperature alarms
- Remote alarm contacts
- Adjustable operating temperature: 1°C to 10°C
- Magnetic door gasket for positive seal
- Heavy duty door handle
- Casters with footed brake
- LED interior lights are safety shielded and switch controlled
- One GFCI protected duplex electrical outlet
- One 2" access port with spring loaded self-closing, gasketed metal cover
- Probe access port (3/8")
- Powder coated steel white interior and exterior
- High density urethane foam cabinet insulation
- CFC-free refrigerant (R134a), foam insulation and packaging
- One year parts and labor warranty, plus an additional four year compressor parts warranty
- UL/C-UL listed



Manual Defrost Freezers

TempLog Premier Manual Defrost Freezers

TempLog Premier Manual Defrost Freezers

These units are purpose built for scientific and medical applications. Units feature a digital microprocessor temperature controller allowing for the precise temperature management necessary for critical samples and supplies. A manual defrost design prevents product damaging temperature spikes from defrost cycles. Defrosting of the unit will need to be performed periodically to prevent severe ice build-up.

The all-new Touch Screen temperature display and alarm module offers the latest in advanced temperature control and data logging. Industry-leading product security with a monitoring and alarm system that is 100% independent of the temperature controller. Real-time sample simulated temperatures are constantly displayed, logged and supported by audible/visual high and low temperature alarms, along with power outage, sensor error and door ajar alarms, remote alarm dry contacts, a 4-20mA output and an access port are provided to simplify connections to existing facility monitoring systems. A USB port is provided for easy transfer as well as software updates.

Sample simulated temperature display to show real-time product temperatures.



ABT-MFP-14-TS

ABT-MFP-17-TS

Model	Cu. Ft.	Defrost	Temp	Doors	Int Door	Shelves	W"	D"	H"	RL	H.P.	Amps
ABT-MFP-14-TS	14	Manual	-20°C	1 Solid	4	3 Fixed	29 3/4	32 3/8	62 1/2	R134a	1/3	5
ABT-MFP-17-TS	17	Manual	-20°C	1 Solid	4	3 Fixed	34	30 7/16	67 3/4	R134a	1/3	5
ABT-MFP-20-TS	20	Manual	-20°C	1 Solid	5	4 Fixed	34	32 9/16	73 1/4	R134a	1/3	5
ABT-MFP-30-TS	30	Manual	-20°C	1 Solid	5	4 Fixed	35 3/4	34 1/4	72 1/2	R404a	1/3	6
ABT-MFP-2030-TS	20	Manual	-30°C	1 Solid	5	4 Fixed	34	32 9/16	73 1/2	R134a	1/3	5
ABT-MFP-3030-TS	30	Manual	-30°C	1 Solid	5	4 Fixed	35 3/4	34 1/4	72 1/4	R404a	1	10.7

- One solid swing door, right hinged, not reversible
- Four Inner "fast-freeze compartments" with doors for temperature maintenance and recovery
- Microprocessor Temperature Controller
- Adjustable Operating Temperature Range: -15° - -25°C
- Touch Screen Digital Temperature Display and Alarm Module
- Password-protected Control Panel
- Sample simulated digital temperature display; 1° Resolution, adjustable temperature display in Celsius or Fahrenheit
- Active Temperature Scale Bar Display
- Resettable 1-point Min/Max History
- Digital 24-hour Temperature Chart
- Temperature Data Logging
- USB Port for Data Transfer and Software Updates
- Real-time Operational Display Clock
- 4-20mA Output
- Electronic Troubleshooting Guide
- Electronic QR Code to Access Owner's Manual & Technical Support Contact Information
- Adjustable Alarm Volume
- Audible and Visual High/Low Temperature Alarms
- Sensor Error Alarm



The all-new Touch Screen temperature display and alarm module offers industry-leading product security real-time sample simulated temperatures are constantly displayed, logged and supported by audible and visual alarms, remote alarm contacts, a 4-20mA output and an access port. A USB port is provided for easy data transfer.



5 inner "fast freeze compartments" with doors for temperature maintenance and recovery

ABT-MFP-20-TS

ABT-MFP-30-TS

- Power Failure Alarm
- Door Ajar Alarm
- Low Battery Alarm
- Operation Indicator
- Alarm Validation (audible, visual, and remote alarm)
- Alarm Mute with Ring Back
- Remote Alarm Contacts
- Three fixed shelves
- Keyed door lock
- Magnetic door gasket for positive seal
- Heavy duty door handle
- Caster platform (adds 4 1/2" to height)
- One probe access port (3/8")
- White textured cabinet and door
- High density urethane foam cabinet and door insulation
- CFC-free refrigerant (R134a), foam insulation and packaging
- Three year parts and labor warranty, plus additional two year compressor parts warranty
- Quality certified with 100% unit temperature testing
- Manual defrost
- UL/C-UL listed

Premier Manual Defrost Freezers

Premier Manual Defrost Freezers

The Premier Manual Defrost Freezers feature a microprocessor temperature controller, allow for precise temperature control, recovery and maintenance versus mechanical style thermostats. Critical samples and supplies are security backed with an extensive package of temperature security and alarms. Manual defrost units also feature five insulating inner doors and a manual defrost operating system to limit product-damaging temperature spikes. In addition to the elimination of damaging auto defrost cycles, the inner doors help reduce cold air loss during main door openings and greatly improve temperature recovery. Periodic manual defrosting is required.



ABT-MFP-14



ABT-MFP-17

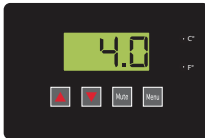


ABT-MFP-20

Caster platform *adds 4 1/2" to height* for easy transport.

Model	Cu. Ft.	Defrost	Temp	Doors	Int Door	Shelves	W"	D"	H"	RL	H.P.	Amps
ABT-MFP-14	14	Manual	-20°C	1 Solid	4	3 Fixed	29 3/4	32 3/8	62 1/2	R134a	1/3	5
ABT-MFP-17	17	Manual	-20°C	1 Solid	4	4 Fixed	34	30 7/16	67 3/4	R134a	1/3	5
ABT-MFP-20	20	Manual	-20°C	1 Solid	5	4 Fixed	34	32 9/16	73 1/4	R134a	1/3	5
ABT-MFP-30	30	Manual	-20°C	1 Solid	5	4 Fixed	35 3/4	34 1/4	72 1/2	R404a	1/3	6
ABT-MFP-2030	20	Manual	-30°C	1 Solid	5	4 Fixed	34	32 9/16	73 1/4	R134a	1/3	5
ABT-MFP-3030	30	Manual	-30°C	1 Solid	5	4 Fixed	35 3/4	34 3/4	72 1/2	R404a	1	6

- One solid swing door, right hinged, not reversible
- Four Inner "fast-freeze compartments" with doors for temperature maintenance and recovery
- Microprocessor Temperature Controller
- Adjustable operating temperature range: -15° -25°C
- Standard Digital Temperature Display and Alarm Module
- Sample simulated digital temperature display; 1° Resolution
- Adjustable temperature display in Celsius or Fahrenheit
- Audible and visual high/low temperature alarms
- Sensor error alarm
- Power failure alarm
- Resettable 1-point Min/Max History
- Remote alarm contacts
- Alarm validation (audible, visual, and remote alarm)
- Alarm mute with ring back
- Keyed door lock



The Premier Manual Defrost Freezers are also purpose built for critical cold storage applications, but where built-in data logging functionality may not be a necessity.

The all-new temperature display and alarm module offers an array of robust security features with a monitoring and alarm system that is 100% independent of a microprocessor temperature controller.



ABT-MFP-16-C

Sample simulated digital temperature display with 0.1° resolution.



ABT-MFP-22-C

4 removable baskets.

Chest Freezers

Model	Cu. Ft.	Defrost	Temp	Doors	Int Door	Shelves	W"	D"	H"	RL	H.P.	Amps
ABT-MFP-16-C	16	Manual	-20°C	1 Hinge	0	3 Fixed	29 3/4	32 3/8	62 1/2	R134a	1/3	5
ABT-MFP-22-C	22	Manual	-20°C	1 Hinge	0	4 Fixed	34	30 7/16	67 3/4	R134a	1/3	5

- Magnetic door gasket for positive seal
- Heavy duty door handle
- Caster platform (adds 4 1/2" to height) *Not included on Chest Freezer models*
- One probe access port (3/8")
- White textured cabinet and door
- High density urethane foam cabinet and door insulation
- CFC-free refrigerant (R134a), foam insulation and packaging

- Two year parts and labor warranty; plus additional three year compressor parts warranty
- Quality certified with 100% unit temperature testing
- Manual defrost
- UL/C-UL listed

Standard Manual Defrost Freezers

Standard Manual Defrost Freezers

The Standard Manual Defrost Freezers are intended for general purpose applications where precise temperature control and maintenance are not essential and there are no requirements for temperature alarms. Manual defrost units have been designed to operate without product damaging auto defrost cycles. Periodic manual defrost is required on these units.



Keyed door lock.

Mechanical thermostat with adjustable operating temperature range: -15°C to -25°C

ABT-MFS-14

Model	Cu. Ft.	Defrost	Temp	Doors	Shelves	W"	D"	H"	RL	H.P.	Amps
ABT-MFS-14	14	Manual	-20°C	1 Solid	3 Fixed	29 3/4	32 3/8	62 1/2	R134a	1/3	5
ABT-MFS-17	17	Manual	-20°C	1 Solid	3 Fixed	34	30 7/16	67 3/4	R134a	1/3	5
ABT-MFS-20	20	Manual	-20°C	1 Solid	4 Fixed	34	32 9/16	73 1/4	R134a	1/3	5
ABT-MFS-30	30	Manual	-20°C	1 Solid	3 Fixed/ 2 Adj.	35 3/4	34 1/4	72 1/2	R404a	1/3	6
Chest Freezers											
Model	Cu. Ft.	Defrost	Temp	Doors	Shelves	W"	D"	H"	RL	H.P.	Amps
ABT-MFS-16-C	16	Manual	-20°C	1 Hinge	1 Basket	56	29 1/2	35	R134a	1/4	5
ABT-MFS-22-C	22	Manual	-20°C	1 Hinge	4 Baskets	73 1/4	29 1/2	35	R134a	1/4	5

- One solid swing door, right hinged, not reversible (Upright Freezers)
- Mechanical thermostat
- Adjustable operating temperature range: -15°-25°C
- Keyed door lock
- Magnetic door gasket for positive seal
- Heavy duty door handle
- Leveling legs *Not included on Chest Freezer models*
- Probe access port (3/8")
- White textured cabinet and door
- High density urethane foam cabinet and door insulation
- CFC-free refrigerant (R134a), foam insulation and packaging
- One year parts and labor warranty; plus additional four year compressor parts warranty
- Quality certified with 100% unit temperature testing
- Manual defrost
- UL/C-UL listed



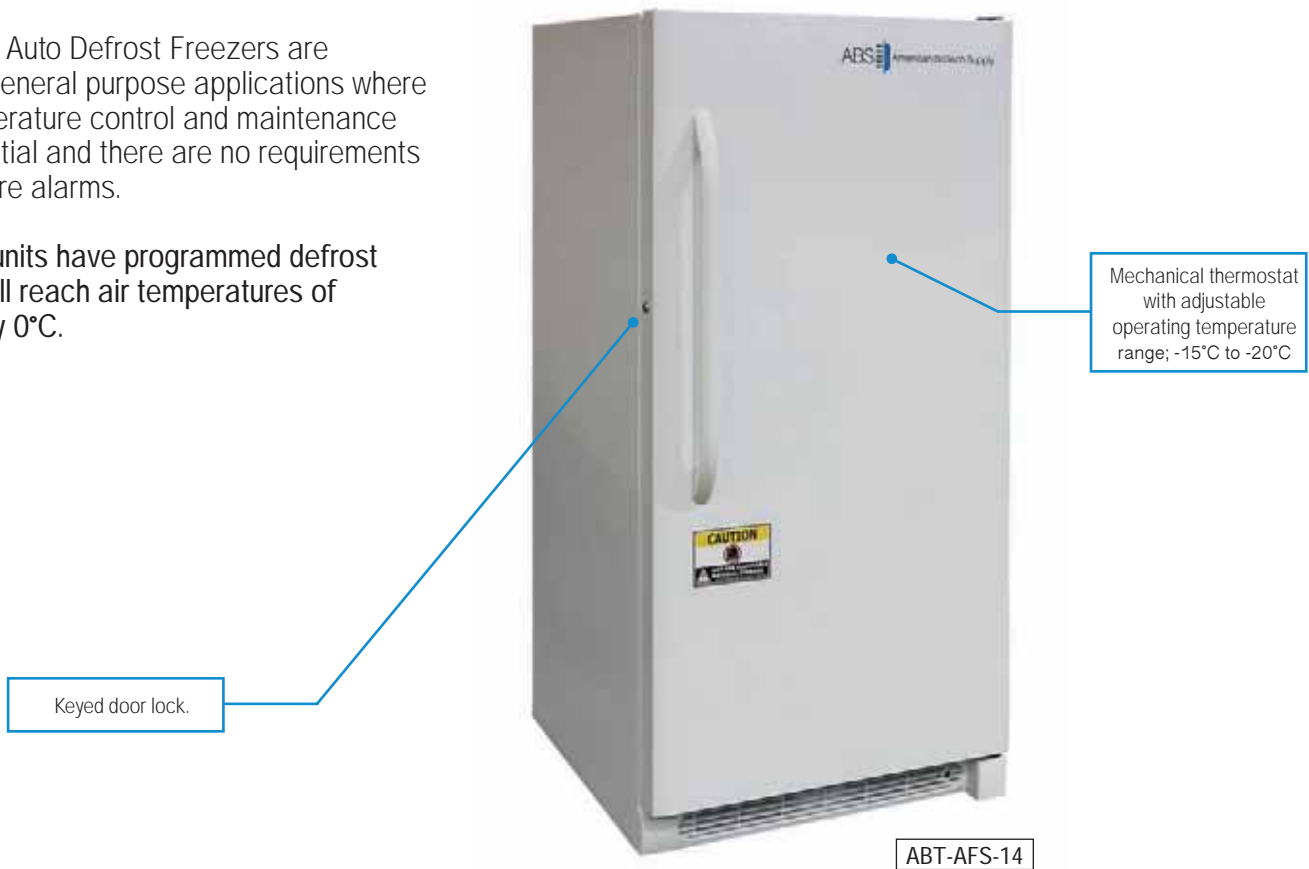
Auto Defrost Freezers

Standard Auto-Defrost Freezers

Standard Auto-Defrost Freezers

The Standard Auto Defrost Freezers are intended for general purpose applications where precise temperature control and maintenance are not essential and there are no requirements for temperature alarms.

Auto defrost units have programmed defrost cycles that will reach air temperatures of approximately 0°C.



DISCLAIMER: Auto defrost freezers incorporate an electric heater installed on the evaporator that assists in the removal of the frost and ice. Although the heater helps speed up the frost and ice removal, it can raise the temperatures within the freezer. These air temperature spikes can be harmful to some medical and laboratory products.

Model	Cu. Ft.	Defrost	Temp	Doors	Int Door	Shelves	W"	D"	H"	RL	H.P.	Amps
ABT-AFS-14	14	Auto	-20°C	1 Solid	0	3 Fixed	29 3/4	32 3/8	62 1/4	R134a	1/4	5
ABT-AFS-17	17	Auto	-20°C	1 Solid	0	4 Fixed	34	30 7/16	67 1/4	R134a	1/4	5
ABT-AFS-20	20	Auto	-20°C	1 Solid	0	4 Fixed	35	32 9/16	73 1/2	R134a	1/4	5
ABT-AFS-30	30	Auto	-20°C	1 Solid	0	5 Adj	35 3/4	34 1/4	72 1/2	R404a	1/2	9

- One solid swing door, right hinged, not reversible
- Mechanical thermostat
- Adjustable operating temperature range: -15°C – -20°C
- Keyed door lock
- Magnetic door gasket for positive seal
- Heavy duty door handle
- Leveling legs
- Probe access port (3/8")
- White textured cabinet and door
- High density urethane foam cabinet and door insulation
- CFC-free refrigerant (R134a), foam insulation and packaging
- One year parts and labor warranty, plus an additional four year compressor parts warranty
- Quality certified with 100% unit temperature testing
- Auto defrost
- CSA listed



Stainless Steel
Refrigerators & Freezers

TempLog Premier Stainless Steel Validation Refrigerators & Freezers

TempLog Premier Plus SS Validation Refrigerators & Freezers

The TempLog Premier Plus Glass & Solid Door Stainless Steel Validation Laboratory Refrigerators are purpose built for scientific and medical applications. Units feature a digital microprocessor temperature controller, A forced air directional refrigeration system, and an automatic cycle-defrost design prevents product damaging temperature spikes.

The all-new Touch Screen temperature display and alarm module offers industry-leading product security real-time sample simulated temperatures are constantly displayed, logged and supported by audible/visual alarms, remote alarm contacts, a 4-20mA output and an access port. A USB port is provided for easy data transfer.

In addition, we provide multipoint temperature mapping via ABS's NIST traceable data acquisition equipment assuring reproducible operation. If provided with a Requirements Document, ABS will make every effort to fulfill or exceed each condition.

Environmentally friendly, natural hydrocarbon (HC) refrigerants which vastly reduce global-warming potential while meeting new EPA/SNAP mandates.

Sample simulated temperature display to show real-time product temperatures.



ABT-HCPP-49G-TS

Model	Cu. Ft.	Defrost	Doors	Shelves	W"	D"	H"	RL	H.P.	Amps
ABT-HCPP-23G-TS	23	Cycle	1 Glass	3 Adj	27	31 5/8	78 5/16	R290a	1/3	7.9
ABT-HCPP-23-TS	23	Cycle	1 Solid	3 Adj	27	31 5/8	78 5/16	R290a	1/3	7.6
ABT-HCPP-49G-TS	49	Cycle	2 Glass	6 Adj	54 1/8	31 5/8	78 5/16	R290a	1/3	5.8
ABT-HCPP-49-TS	49	Cycle	2 Solid	6 Adj	54 1/8	31 5/8	78 5/16	R290a	1/3	5.8
ABT-HCPP-72G-TS	72	Cycle	3 Glass	9 Adj	78 1/8	31 5/8	78 5/16	R290a	1/2	9.6
ABT-HCPP-72-TS	72	Cycle	3 Solid	9 Adj	78 1/8	31 5/8	78 5/16	R290a	1/2	9.6



- Multi-Point temperature mapping via NIST traceable data acquisition, 15 probes in air and 3 probes in sample solution for 360 minutes with temperature readings every 60 seconds
- Touch Screen Temperature Display & Alarm Module
- Microprocessor temperature controller
- Adjustable operating temperature range:
Refrigerators: 1°C - 10°C
Freezers: -15° - -25°C
- Touch Screen Digital Temperature Display and Alarm Module
- Password-protected control panel
- Sample simulated digital temperature display; .1° Resolution, adjustable temperature display in Celsius or Fahrenheit
- Active temperature scale bar display
- Resettable 1-point min/max history
- Digital 24-hour temperature chart
- Temperature & alarm event data logging
- USB port for data transfer and software updates
- Real-time operational display clock
- 4-20mA output
- Electronic troubleshooting guide
- Electronic QR Code to access Owner's Manual & technical support contact Information
- Adjustable alarm volume
- Audible and visual high/low temperature alarms



The all-new Touch Screen temperature display and alarm module offers industry-leading product security real-time sample simulated temperatures are constantly displayed, logged and supported by audible and visual alarms, remote alarm contacts, a 4-20mA output and an access port. A USB port is provided for easy data transfer.



Stainless steel interior/
exterior.

Standard features: Multi-Point temperature mapping via NIST traceable data acquisition, 15 probes in air and 3 probes in sample solution for 360 minutes with temperature readings every 60 seconds

ABT-HCPP-49-TS

Model	Cu. Ft.	Defrost	Doors	Shelves	W"	D"	H"	RL	H.P.	Amps
ABT-AFPP-23-TS	23	Auto	1	3 Adj	27	31 5/8	78 5/16	R290a	1/3	7.2
ABT-AFPP-49-TS	49	Auto	2	6 Adj	5 1/8	31 5/8	78 5/16	R290a	3/4	11

- Sensor error alarm
- Power failure alarm
- Door ajar alarm
- Low battery alarm
- Operation indicator
- Alarm validation (audible, visual, and remote alarm)
- Alarm mute with ring back
- Remote alarm contacts
- Keyed door lock
- Magnetic door gasket for positive seal
- Heavy duty door handle
- Swivel casters (adds 5" to height)

- Interior light
- Probe access port (3/8")
- Stainless steel interior/exterior
- High density urethane foam cabinet insulation
- HFC-free refrigerant (R290a), foam insulation and packaging
- Quality certified with 100% unit temperature testing
- Three year parts and labor warranty, plus an additional two year compressor parts warranty
- Defrost:
- Refrigerator: Cycle defrost
- Freezer: Auto defrost
- UL/C-UL listed

Premier Plus Stainless Steel Validation Refrigerators & Freezers

Premier Plus SS Validation Refrigerators & Freezers

The Premier Plus Stainless Steel Validation Refrigerator & Freezers are performance qualified to help satisfy qualification and validation requirements. These units feature a microprocessor temperature controller and display which allows for precise temperature control, verification and recovery versus mechanical style thermostats. An interior fan driven, forced-draft air circulation system provides excellent temperature uniformity and recovery after door openings.

Critical samples and supplies are security backed with an extensive package of audible and visual alarms. Auto defrost freezer models have programmed defrost cycles that will reach air temperatures of approximately 0°C. In addition, we provide multi-point temperature mapping via ABS's NIST traceable data acquisition equipment assuring reproducible operation. If provided with a Requirements Document, ABS will make every effort to fulfill or exceed each condition.

Stainless steel interior/
exterior.

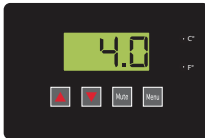


ABT-HCPP-49G

Model	Cu. Ft.	Defrost	Doors	Shelves	W"	D"	H"	RL	H.P.	Amps
ABT-HCPP-23G	23	Cycle	1 Glass	3 Adj	27	31 5/8	78 5/16	R290a	1/3	7.9
ABT-HCPP-23	23	Cycle	1 Solid	3 Adj	27	31 5/8	78 5/16	R290a	1/3	7.6
ABT-HCPP-49G	49	Cycle	2 Glass	6 Adj	54 1/8	31 5/8	78 5/16	R290a	1/3	5.8
ABT-HCPP-49	49	Cycle	2 Solid	6 Adj	54 1/8	31 5/8	78 5/16	R290a	1/3	5.8
ABT-HCPP-72G	72	Cycle	3 Glass	9 Adj	78 1/8	31 5/8	78 5/16	R290a	1/2	9.6
ABT-HCPP-72	72	Cycle	3 Solid	9 Adj	78 1/8	31 5/8	78 5/16	R290a	1/2	9.6



- Multi-Point temperature mapping via NIST traceable data acquisition, 15 probes in air and 3 probes in sample solution for 360 minutes with temperature readings every 60 seconds
- Microprocessor Temperature Controller
- Adjustable operating temperature range:
 - Refrigerator: 1°C - 10°C
 - Freezer: -15°C - -25°C
- Digital Temperature Display and Alarm Module
- Sample simulated digital temperature display; 1° Resolution
- Adjustable temperature display in Celsius or Fahrenheit
- Audible and visual high/low temperature alarms
- Sensor error alarm
- Power failure alarm
- Resettable 1-point min/max history
- Remote alarm contacts
- Alarm validation (audible, visual, and remote alarm)
- Alarm mute with ring back
- Keyed door lock



The Premier Plus SS Validation Refrigerators & Freezers are also purpose built for critical cold storage applications, but where built-in data logging functionality may not be a necessity.

The all-new temperature display and alarm module offers an array of robust security features with a monitoring and alarm system that is 100% independent of a microprocessor temperature controller.

Standard features; Multi-Point temperature mapping via NIST traceable data acquisition, 15 probes in air and 3 probes in sample solution for 360 minutes with temperature readings every 60 seconds



ABT-HCPP-49



ABT-HCPP-23

Model	Cu. Ft.	Defrost	Doors	Shelves	W"	D"	H"	RL	H.P.	Amps
ABT-AFPP-23	23	Auto	1	3 Adj	27	31 5/8	78 5/16	R290a	1/3	7.2
ABT-AFPP-49	49	Auto	2	6 Adj	5 1/8	31 5/8	78 5/16	R290a	3/4	11

- Magnetic door gasket for positive seal
- Heavy duty door handle
- Swivel casters (adds 5" to height)
- Interior light
- Probe access port (3/8")
- Stainless steel interior/exterior
- High density urethane foam cabinet insulation
- HFC-free refrigerant (R290a), foam insulation and packaging
- Quality certified with 100% unit temperature testing

- Two year parts and labor warranty, plus an additional three year compressor parts warranty
- Defrost:
Refrigerator: Cycle defrost
Freezer: Auto defrost
- UL/C-UL listed

Premier Stainless Steel Refrigerators

Premier Stainless Steel Refrigerators

The Premier Stainless Steel Refrigerators feature a microprocessor temperature controller, allowing for precise temperature control, recovery and maintenance versus mechanical style thermostats.

Critical samples and supplies are security backed with an extensive package of temperature security and alarm features.



The Premier SS Refrigerators take a large step forward in performance from past solid door general purpose units; offering a Digital temperature display and alarm module coupled with a microprocessor temperature controller.



Stainless steel interior floor; stainless steel exterior.

Quality certified with 100% unit temperature testing.

ABT-SSP-49

Model	Cu. Ft.	Defrost	Doors	Shelves	W"	D"	H"	RL	H.P.	Amps
ABT-SSP-23	23	Cycle	1 Solid	3 Adj	26 3/4	33	77 1/4	R134a	3/8	6
ABT-SSP-49	49	Cycle	2 Solid	6 Adj	54	32 7/8	77 1/4	R134a	1/2	9

- Microprocessor temperature controller
- Digital temperature display
- Audible and visual high and low temperature alarms
- Remote alarm contacts
- Adjustable operating temperature range: 1°C – 10°C
- Keyed door lock
- Magnetic door gasket for positive seal
- Integrated door handle
- Swivel casters (adds 6 1/2" to height)
- Interior light
- Probe access port (3/8") Stainless steel interior floor
- Stainless steel exterior
- High density urethane foam cabinet insulation
- CFC-free refrigerant (R134a)
- Foam insulation and packaging
- Quality certified with 100% unit temperature testing
- Two year parts and labor warranty, plus an additional three year compressor parts warranty
- Cycle defrost
- UL/C-UL listed



Undercounter Refrigerators
and Freezers

Premier Built-In Undercounter Refrigerators & Freezers

Premier Built-In Undercounter Refrigerators & Freezers



The Premier Built-in Undercounter units take a large step forward in performance from past solid door general purpose units: offering a Digital temperature display and alarm module coupled with a microprocessor temperature controller.

The Premier **Built In Undercounter** Refrigerators and Freezers feature a microprocessor temperature controller and display, which allows for precise temperature control, verification and recovery versus mechanical style thermostats. An interior fan driven, forced-draft air circulation system provides excellent temperature uniformity and recovery after door openings (REFRIGERATORS ONLY).

Critical samples and supplies are security backed with an extensive package of audible and visual alarms. The freezer units feature either an automatic or manual defrost operating system. For manual defrost units, periodic manual defrosting is required.

Back wall evaporator cover.



ABT-HC-UCBI-0404SS

ABT-HC-UCBI-0404G-ADA

ABT-HC-UCBI-0404

Model	Cu. Ft.	Defrost	Doors	Shelves	W"	D"	H"	RL	H.P.	Amps
ABT-HC-UCBI-0404	4.6	Cycle	1 Solid	2 Adj/1 Fixed	23 3/4	24 1/2	33 3/8	R600a	1/8	1.74
ABT-HC-UCBI-0404-LH	4.6	Cycle	1 Solid	2 Adj/1 Fixed	23 3/4	24 1/2	33 3/8	R600a	1/8	1.74
ABT-HC-UCBI-0404G	4.6	Cycle	1 Glass	2 Adj/1 Fixed	23 3/4	25 1/2	33 3/8	R600a	1/8	1.74
ABT-HC-UCBI-0404-LH	4.6	Cycle	1 Solid	2 Adj/1 Fixed	23 3/4	24 1/2	33 3/8	R600a	1/8	1.74
ABT-HC-UCBI-0404G-ADA	4.6	Cycle	1 Glass	2 Adj/1 Fixed	23 3/4	25 1/2	31 15/16	R600a	1/8	1.74
ABT-HC-UCBI-0404G-ADA-LH	4.6	Cycle	1 Glass	2 Adj/1 Fixed	23 3/4	25 1/2	31 15/16	R600a	1/8	1.74
ABT-HC-UCBI-0404SS	4.5	Cycle	1 Solid	2 Adj/1 Fixed	23 3/4	24 1/2	33 3/8	R600a	1/8	1.74
ABT-HC-UCBI-0404SS-LH	4.5	Cycle	1 Solid	2 Adj/1 Fixed	23 3/4	24 1/2	33 3/8	R600a	1/8	1.74



- Microprocessor temperature controller
- Digital temperature display
- Audible and visual high and low temperature alarms
- Remote alarm contacts
- 2 probes; 1 in air and 1 in glycol bottle
- Adjustable operating temperature range:
- Refrigerator: 1°C – 10°C
- Freezer: -15°C – -25°C
- Keyed door lock
- Recessed door handle
- Magnetic door gasket for positive seal
- Leveling legs

Digital display can show air or sample temperatures.



ABT-HC-UCBI-0420A

ABT-HC-UCBI-0420

Front venting design allows units to be completely enclosed in case work.

The Undercounter Built-in models (“UCBI”) are designed with a “front-breathing” ventilation system, eliminating the need for clearance around the top and sides of the unit; enabling the user to incorporate these units into cabinets and other applications where free space is limited.

Model	Cu. Ft.	Defrost	Doors	Shelves	W"	D"	H"	RL	H.P.	Amps
ABT-HC-UCBI-0420	4.2	Manual	1 Solid	2 Fixed	23 3/4	24 1/2	33 3/8	R600a	1/8	1.5
ABT-HC-UCBI-0420-LH	4.2	Manual	1 Solid	2 Fixed	23 3/4	24 1/2	33 3/8	R600a	1/8	1.5
ABT-HC-UCBI-0420-ADA	4.2	Manual	1 Solid	2 Fixed	23 3/4	24 1/2	32	R600a	1/8	1.5
ABT-HC-UCBI-0420-ADA-LH	4.2	Manual	1 Solid	2 Fixed	23 3/4	24 1/2	32	R600a	1/8	1.5
ABT-HC-UCBI-0420SS	4.2	Manual	1 Solid	2 Fixed	23 3/4	24 1/2	33 3/8	R600a	1/8	1.5
ABT-HC-UCBI-0420SS-LH	4.2	Manual	1 Solid	2 Fixed	23 3/4	24 1/2	33 3/8	R600a	1/8	1.5
ABT-HC-UCBI-0420A	4.2	Auto	1 Solid	3 Adj	23 3/4	24	33 1/8	R600a	1/8	1.8
ABT-HC-UCBI-0420A-LH	4.2	Auto	1 Solid	3 Adj	23 3/4	24	33 1/8	R600a	1/8	1.8

- Probe access port (3/8")
- Powder coat exterior
- High density urethane foam cabinet and door insulation
- HFC-free refrigerant (R600a), foam insulation and packaging
- Two year parts and labor warranty
- Defrost

- Refrigerator: Cycle defrost
- Freezer: Auto & Manual defrost available
- UL/C-UL listed

Premier Freestanding Undercounter/Countertop Refrigerators & Freezers

Premier Freestanding Undercounter Refrigerators & Freezers

The Premier Free Standing Undercounter Refrigerators and Freezers feature a microprocessor temperature controller and display, allow for precise temperature control, verification and recovery versus mechanical style thermostats. An interior fan driven, forced-draft air circulation system provides excellent temperature uniformity and recovery after door openings. Critical samples and supplies are security backed with an extensive package of audible and visual alarms. The freezer units feature either an automatic or manual defrost operating system. For manual defrost units, periodic defrosting is required.



ABT-HC-UCFS-0204

Forced draft circulation allows for rapid recovery after door opening and superior temperature uniformity.



ABT-HC-UCFS-0104G

ABT-HC-UCFS-0204G

Model	Cu. Ft.	Defrost	Doors	Shelves	W"	D"	H"	RL	H.P.	Amps
ABT-HC-UCFS-0104	1	Cycle	1 Solid	2 Adj	23 3/4	24 1/2	33 3/8	R600a	1/8	1.74
ABT-HC-UCFS-0104-LH	1	Cycle	1 Solid	2 Adj	23 3/4	24 1/2	33 3/8	R600a	1/8	1.74
ABT-HC-UCFS-0104G	1	Cycle	1 Glass	2 Adj	23 3/4	25 1/2	33 3/8	R600a	1/8	1.74
ABT-HC-UCFS-0104-LH	1	Cycle	1 Glass	2 Adj	23 3/4	25 1/2	33 3/8	R600a	1/8	1.74
ABT-HC-UCFS-0204	2.5	Cycle	1 Solid	4 Adj	23 3/4	25 1/2	31 15/16	R600a	1/8	1.74
ABT-HC-UCFS-0204G	2.5	Cycle	1 Glass	4 Adj	23 3/4	25 1/2	31 15/16	R600a	1/8	1.74
ABT-HC-UCFS-0504G	5.2	Cycle	1 Glass	2 Adj/1 Fixed	23 3/4	24 1/2	33 3/8	R600a	1/8	1.74

- Microprocessor temperature controller with battery back-up (batteries included)
- Adjustable operating temperature range:
Refrigerator: 1°C – 10°C
Freezer: -15°C – -25°C
- Digital temperature display
- Audible and visual high and low temperature alarms, with battery back-up
- Remote alarm contacts
- Back wall evaporator cover
- Forced draft circulation (refrigerators only)
- Keyed door lock
- Magnetic door gasket for positive seal
- Leveling legs
- Probe access port (3/8")



The Premier Freestanding units take a large step forward in performance from past solid door general purpose units; offering a Digital temperature display and alarm module coupled with a microprocessor temperature controller.



Model	Cu. Ft.	Defrost	Doors	Shelves	W"	D"	H"	RL	H.P.	Amps
ABT-HC-UCFS-0120	1.7	Manual	1 Solid	2 Adj	23 3/4	24	20 3/8	R600a	1/8	1
ABT-HC-UCFS-0120-LH	1.7	Manual	1 Solid	2 Adj	23 3/4	24	20 3/8	R600a	1/8	1
ABT-HC-UCFS-0120A	1.3	Auto	1 Solid	2 Adj	23 1/2	23 1/4	20 1/2	R600a	1/7	1.6
ABT-HC-UCFS-0120A-LH	1.3	Auto	1 Solid	2 Adj	23 1/2	23 1/4	20 1/2	R600a	1/7	1.6
ABT-HC-UCFS-0430	4	Manual	1 Solid	3 Fixed	23 3/4	24	32 1/8	R600a	1/4	2.2
ABT-HC-UCFS-0440	4	Manual	1 Solid	3 Fixed	23 3/4	24	32 1/8	R600a	1/4	2.2

- Powder coat exterior
- High density urethane foam cabinet and door insulation
- HFC-free refrigerant (R600a), foam insulation and packaging
- Two year parts and labor warranty
- Note: This unit must have 4" clearance on sides and back for adequate ventilation
- Defrost:

- Refrigerator: Cycle defrost
- Freezer: Auto & Manual defrost available
- ADA compliant units available
- UL/C-UL listed

Standard Freestanding Undercounter Refrigerators & Freezers

Standard Freestanding Undercounter Refrigerators & Freezers

The Standard Free Standing Undercounter Refrigerators and Freezers are intended for general purpose applications only where precise temperature control and maintenance are not essential and there are no requirements for temperature alarms.

Freezers feature a manual defrost operating system to limit product-damaging temperature spikes found in auto defrost units. Periodic manual defrosting is required.

Designed specifically for General Purpose applications; where precise temperature control, maintenance and alarms are not necessary



Standard feature; keyed door lock.

ABT-HC-0504W

Warning: These units are not designed for built-in and/or enclosed installations. Improper installation will void the warranty and will lead to temperature maintenance issues, overheating and possible failure.

Model	Cu. Ft.	Defrost	Doors	Shelves	W"	D"	H"	RL	H.P.	Amps
ABT-HC-UCFS-0504W	4.6	Cycle	1 Solid	2 Adj/ 1 Fixed	21 1/2	22 1/4	33 5/8	R600a	1/7	0.9
ABT-HC-UCFS-0420W	4	Manual	1 Solid	4 Drawers	20	22 5/8	33 3/4	R600a	1/7	0.9



- Mechanical thermostat
- Adjustable operating temperature range:
 - Refrigerator: 1°C – 10°C
 - Freezer: -15°C – -25°C
- Keyed door lock
- Magnetic door gasket for positive seal
- Recessed door handle
- Leveling legs
- Probe access port (3/8")
- White cabinet and door
- High density urethane foam cabinet and door insulation
- HFC-free refrigerant (R600a), foam insulation and packaging
- One year parts and labor warranty
- Note: This unit must have 4" clearance on sides and back for adequate ventilation
- Defrost:
 - Refrigerator: Cycle defrost
 - Freezer: Manual defrost
- UL/C-UL listed



Pass Thru Refrigerators

Premier Pass Thru Refrigerators

Premier Pass Thru Refrigerators

These units feature both front and rear door access for applications where the loading and removal of product from both sides of the unit is required. Pass-Thru units are ideal for clean room and pharmacy IV preparation applications. The Premier Pass-Thru Refrigerators also feature a microprocessor temperature controller that allows for precise temperature control, recovery and maintenance versus mechanical dial thermostats. Samples and supplies are protected with an extensive package of temperature security and alarm features. In addition, a large digital display and solution bottle are installed to provide an accurate indication of sample temperatures.



The Premier Pass Thru Refrigerators are also purpose built for critical cold storage applications, but where built-in data logging functionality may not be a necessity.

The all-new temperature display and alarm module offers an array of robust security features with a monitoring and alarm system that is 100% independent of a microprocessor temperature controller.



Available in either sliding or swinging glass front doors. Two solid rear swinging doors.

ABT-HCPTP-49



Model	Cu. Ft.	Defrost	Front Door	Back Door	Shelves	W"	D"	H"	RL	H.P.	Amps
ABT-HCPTP-47	47	Cycle	2 Glass	2 Solid	8 Adj	54 1/8	32 3/8	78 5/8	R290a	1/2	8.8
ABT-HCPTP-49	49	Cycle	2 Glass	2 Solid	8 Adj	54 1/8	33 7/8	78 5/8	R290a	1/2	8.5

- Microprocessor Temperature Controller
- Adjustable operating temperature range: 1° -10°C
- Digital Temperature Display and Alarm Module
- Sample simulated digital temperature display; 1° Resolution
- Adjustable temperature display in Celsius or Fahrenheit
- Audible and visual high/low temperature alarms
- Sensor error alarm
- Power failure alarm
- Resettable 1-point Min/Max History
- Remote alarm contacts
- Alarm validation (audible, visual, and remote alarm)
- Alarm mute with ring back
- Keyed door lock

- Magnetic door gasket for positive seal
- Heavy duty door handle
- Casters (adds 4" to height)
- One probe access port (3/8")
- White textured cabinet and door
- High density urethane foam cabinet and door insulation
- HFC-free refrigerant (R290a), foam insulation and packaging
- Two year parts and labor warranty, plus an additional three year compressor parts warranty
- Quality certified with 100% unit temperature testing
- Cycle defrost
- UL/C-UL listed



Flammable Storage
Refrigerators & Freezers

TempLog Premier Flammable Refrigerators & Freezers

TempLog Premier Flammable Refrigerators & Freezers

The TempLog Premier Flammable Storage Refrigerators & Freezers meet NFPA and OSHA guidelines 45 and 70 for the refrigerated storage of flammable (volatile) materials in general laboratory work areas. There are no electrical components located in the interior of the unit and the compressor's electrical components have been sealed in a vapor-proof enclosure for additional safety. These units are **NOT** designed for use in environments where volatile/explosive conditions could potentially exist.

The all-new Touch Screen temperature display and alarm module offers industry-leading product security real-time sample simulated temperatures are constantly displayed, logged and supported by audible/visual alarms, remote alarm contacts, a 4-20mA output and an access port. A USB port is provided for easy data transfer.

Sample simulated temperature display to show real-time product temperatures.



ABT-FRP-14-TS

ABT-FRP-17-TS

Refrigerators										
Model	Cu. Ft.	Defrost	Doors	Shelves	W"	D"	H"	RL	H.P.	Amps
ABT-FRP-14-TS	14	Cycle	1 Solid	1 Adj/2 Fixed	29 3/4	36 5/8	62 1/2	R134a	1/3	5
ABT-FRP-17-TS	17	Cycle	1 Solid	1 Adj/2 Fixed	34	34 11/16	67 3/4	R134a	1/3	5
ABT-FRP-20-TS	20	Cycle	1 Solid	1 Adj/3 Fixed	34	36 13/16	73 1/4	R134a	1/3	5
ABT-FRP-30-TS	30	Cycle	1 Solid	5 Adj	35 3/4	38 1/2	72 1/2	R404a	1/3	6

- Microprocessor temperature controller
- Adjustable operating temperature range:
Refrigerator: 1°C - 10°C
Freezer: -15°C - -25°C
- Touch Screen Digital Temperature Display and Alarm Module
- Password-protected control panel
- Sample simulated digital temperature display; 1° Resolution, adjustable temperature display in Celsius or Fahrenheit
- Active temperature scale bar display
- Resettable 1-point min/max history
- Digital 24-hour temperature chart
- Temperature data logging
- USB port for data transfer and software updates
- Real-time operational display clock
- 4-20mA output
- Electronic troubleshooting guide
- Electronic QR Code to access Owner's Manual & technical support contact Information
- Adjustable alarm volume
- Audible and visual high/low temperature alarms
- Sensor error alarm
- Power failure alarm



The all-new Touch Screen temperature display and alarm module offers industry-leading product security real-time sample simulated temperatures are constantly displayed, logged and supported by audible visual alarms, remote alarm contacts, a 4-20mA output and an access port. A USB port is provided for easy data transfer.



Units meet National Fire Protection Association guidelines 45 and 70.

ABT-FFP-14-TS

ABT-FFP-17-TS

ABT-FFP-20-TS

Freezers										
Model	Cu. Ft.	Defrost	Doors	Shelves	W"	D"	H"	RL	H.P.	Amps
ABT-FFP-14-TS	14	Manual	1 Solid	3 Fixed	29 3/4	36 5/8	62 1/2	R134a	1/3	5
ABT-FFP-17-TS	17	Manual	1 Solid	3 Fixed	34	34 11/16	67 3/4	R134a	1/3	5
ABT-FFP-20-TS	20	Manual	1 Solid	4 Fixed	34	36 13/16	73 1/4	R134a	1/3	5
ABT-FFP-30-TS	30	Manual	1 Solid	2 Adj/3 Fixed	35 3/4	38 1/2	72 1/2	R404a	1/3	6

- Door ajar alarm
- Low battery alarm
- Operation indicator
- Alarm validation (audible, visual, and remote alarm)
- Alarm mute with ring back
- Remote alarm contacts
- Three fixed shelves
- Keyed door lock
- Magnetic door gasket for positive seal
- Heavy duty door handle
- Leveling legs
- One probe access port (3/8")
- White textured cabinet and door
- High density urethane foam cabinet and door insulation
- CFC-free refrigerant (R134a), foam insulation and packaging
- Three year parts and labor warranty
- Quality certified with 100% unit temperature testing
- Defrost:
 - Refrigerator: Cycle defrost
 - Freezer: Manual defrost
- UL/C-UL listed
- Units meet NFPA guidelines 45 and 70

Premier Flammable Storage Refrigerators & Freezers

Premier Flammable Storage Refrigerators & Freezers

In addition to the base offering of flammable material storage refrigerators and freezers, these units feature a digital display, alarms and remote alarm contacts. These units meet NFPA and OSHA guidelines 45 and 70 for the refrigerated storage of flammable (volatile) materials in general laboratory work areas.

There are no electrical components located in the interior of the unit and the compressor's electrical components have been sealed in a vapor-proof enclosure for additional safety. These units are **NOT** designed for use in environments where volatile / explosive conditions could potentially exist.

Digital temperature display and alarm module.

Units meet National Fire Protection Association guidelines 45 and 70.

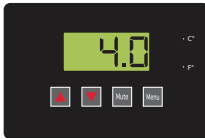


Refrigerators		ABT-FRP-14						ABT-FRP-20		
Model	Cu. Ft.	Defrost	Doors	Shelves	W"	D"	H"	RL	H.P.	Amps
ABT-FRP-04	5	Cycle	1 Solid	3 Adj	23 5/8	24 1/4	32 3/16	R600a	1/9	1.2
ABT-FRP-14	14	Cycle	1 Solid	1 Adj/2 Fixed	29 3/4	36 5/8	61 1/2	R134a	1/3	5
ABT-FRP-17	17	Cycle	1 Solid	1 Adj/2 Fixed	34	34 11/16	67 3/4	R134a	1/3	5
ABT-FRP-20	20	Cycle	1 Solid	1 Adj/3 Fixed	34	36 13/16	73 1/4	R134a	1/3	5
ABT-FRP-30	30	Cycle	1 Solid	5 Adj	35 3/4	38 1/2	72 1/2	R404a	1/3	6



- Microprocessor Temperature Controller
- Adjustable operating temperature range:
Refrigerator: 1°C - 10°C
Freezer: -15°C - -25°C
- Digital Temperature Display and Alarm Module
- Sample simulated digital temperature display; 1° Resolution
- Adjustable temperature display in Celsius or Fahrenheit

- Audible and visual high/low temperature alarms
- Sensor error alarm
- Power failure alarm
- Resettable 1-point Min/Max History
- Remote alarm contacts
- Keyed door lock
- Magnetic door gasket for positive seal



The Premier Flammable Storage units are also purpose built for critical cold storage applications, but where built-in data logging functionality may not be a necessity.

The all-new temperature display and alarm module offers an array of robust security features with a monitoring and alarm system that is 100% independent of a microprocessor temperature controller.



ABT-FFP-14

ABT-FFP-17

ABT-FFP-20

Refrigerators											
Model	Cu. Ft.	Defrost	Doors	Shelves	W"	D"	H"	RL	H.P.	Amps	
ABT-FFP-04	5	Manual	1 Solid	2 Fixed	23 5/8	24 1/4	32 3/16	R600a	1/8	1.4	
ABT-FFP-14	14	Manual	1 Solid	3 Fixed	29 3/4	36 5/8	61 1/2	R134a	1/3	5	
ABT-FFP-17	17	Manual	1 Solid	3 Fixed	34	34 11/16	67 3/4	R134a	1/3	5	
ABT-FFP-20	20	Manual	1 Solid	4 Fixed	34	36 13/16	73 1/4	R134a	1/3	5	
ABT-FFP-30	30	Manual	1 Solid	2 Adj/3 Fixed	35 3/4	38 1/2	72 1/2	R404a	1/3	6	

- Heavy duty door handle
- Leveling legs
- One probe access port (3/8")
- White textured cabinet and door
- High density urethane foam cabinet and door insulation
- CFC-free refrigerant (R134a), foam insulation and packaging
- Two year parts and labor warranty

- Quality certified with 100% unit temperature testing
- Defrost:
 - Refrigerator: Cycle defrost
 - Freezer: Manual defrost
- UL/C-UL listed
- Units meet NFPA guidelines 45 and 70

Standard Flammable Storage Refrigerators & Freezers

Standard Flammable Storage Refrigerators & Freezers

Standard Flammable Storage Refrigerators & Freezers meet NFPA and OSHA guidelines 45 and 70 for the refrigerated storage of flammable (volatile) materials in general laboratory work areas. There are no electrical components located in the interior of the unit and the compressor's electrical components have been sealed in a vapor-proof enclosure for additional safety.

These units are **NOT** designed for use in environments where volatile/explosive conditions could potentially exist.



Refrigerators											
Model	Cu. Ft.	Defrost	Doors	Int Door	Shelves	W"	D"	H"	RL	H.P.	Amps
ABT-FRS-14	14	Cycle	1 Solid	0	1 Adj/2 Fixed	29 3/4	36 5/8	61 1/2	R134a	1/3	5
ABT-FRS-17	17	Cycle	1 Solid	0	1 Adj/2 Fixed	34	34 11/16	67 3/4	R134a	1/3	5
ABT-FRS-20	20	Cycle	1 Solid	0	1 Adj/3 Fixed	34	36 13/16	73 1/4	R134a	1/3	5
ABT-FRS-30	30	Cycle	1 Solid	0	5 Adj	35 3/4	38 1/2	72 1/2	R404a	1/3	6
ABT-FRCS-30	30	Cycle/Manual	1 Solid	1 Freezer	3 Adj	35 3/4	38 1/2	72 1/2	R404a	1/3	6
Freezers											
Model	Cu. Ft.	Defrost	Doors	Int Door	Shelves	W"	D"	H"	RL	H.P.	Amps
ABT-FFS-14	14	Manual	1 Solid	0	3 Fixed	29 3/4	36 5/8	62 1/2	R134a	1/3	5
ABT-FFS-17	17	Manual	1 Solid	0	3 Fixed	34	34 11/16	67 3/4	R134a	1/3	5
ABT-FFS-20	20	Manual	1 Solid	0	4 Fixed	34	36 13/16	73 1/4	R134a	1/3	6
ABT-FFS-30	30	Manual	1 Solid	0	2 Adj/3 Fixed	35 3/4	38 1/2	72 1/2	R404a	1/3	6

- Mechanical thermostat
- Adjustable operating temperature range:
 - Refrigerator: 1°C - 10°C
 - Freezer: -15°C - -25°C
- Keyed door lock
- Magnetic door gasket for positive seal
- Heavy duty door handle
- Leveling legs
- Probe access port (3/8")
- White textured cabinet and door
- High density urethane foam cabinet and door insulation
- CFC-free refrigerant (R134a), foam insulation and packaging
- One year parts and labor warranty
- Quality certified with 100% unit temperature testing
- Defrost:
 - Refrigerator: Cycle defrost
 - Freezer: Manual defrost
- UL/C-UL listed
- Units meet NFPA guidelines 45 and 70



Hazardous Refrigerators & Freezers

Standard Hazardous Location (Explosion Proof) Refrigerators & Freezers

Standard XP Hazardous Location

Standard Hazardous Material Storage (Explosion Proof) Refrigerators & Freezers Meet NFPA and OSHA guidelines for Hazardous Locations, Class 1, Division II, Group C & D. These units are engineered for use in environments where volatile / explosive conditions could potentially exist. They are not intended for common lab / room environments that are not designed to be explosion proof (See: Flammable Material units).

Units are designed with no internal electrical components and all external components are sealed per NFPA and OSHA guidelines. Units must be hard wired in conduit to 120VAC power source.

Power cords with plugs are NOT ACCEPTABLE.

Mechanical thermostat sealed in UL listed explosion proof box.



ABT-EFS-20

Meet NFPA and OSHA guidelines for hazardous locations, Class 1, Division II, Group C & D.

ABT-ERS-30

Refrigerators

Model	Cu. Ft.	Defrost	Doors	Int Door	Shelves	W"	D"	H"	RL	H.P.	Amps
ABT-ERS-14	14	Cycle	1 Solid	0	1 Adj/2 Fixed	29 3/4	35 1/4	66 1/2	R134a	1/3	5
ABT-ERS-17	17	Cycle	1 Solid	0	1 Adj/2 Fixed	34	33 1/4	72 3/4	R134a	1/3	5
ABT-ERS-20	20	Cycle	1 Solid	0	1 Adj/3 Fixed	34	35 1/4	78 1/4	R134a	1/3	5
ABT-ERS-30	30	Cycle	1 Solid	0	5 Adj	35 3/4	36 1/4	72 1/2	R404a	1/3	6
ABT-ERCS-30	30	Cycle/Manual	1 Solid	1 Freezer	3 Adj-Ref	35 3/4	36 1/4	72 1/2	R404a	1/3	6

Freezers

Model	Cu. Ft.	Defrost	Doors	Int Door	Shelves	W"	D"	H"	RL	H.P.	Amps
ABT-EFS-14	14	Manual	1 Solid	0	3 Fixed	29 3/4	35 1/4	62 1/2	R134a	1/3	5
ABT-EFS-17	17	Manual	1 Solid	0	3 Fixed	34	33 1/4	72 3/4	R134a	1/3	5
ABT-EFS-20	20	Manual	1 Solid	0	4 Fixed	34	35 1/4	78 1/4	R134a	1/3	6
ABT-EFS-30	30	Manual	1 Solid	0	2 Adj/3 Fixed	35 3/4	36 1/4	72 1/2	R404a	1/3	6

- Mechanical thermostat sealed in UL listed explosion proof box
- Adjustable operating temperature range:
Refrigerator: 1°C - 10°C
Freezer: -15°C - -25°C
- Keyed door lock
- Magnetic door gasket for positive seal
- Heavy duty door handle
- Leveling legs
- White textured cabinet and door
- High density urethane foam cabinet and door insulation
- CFC-free refrigerant (R134a), foam insulation and packaging
- Quality certified with 100% unit temperature testing
- Defrost:
Refrigerator: Cycle defrost
Freezer: Manual defrost
- Not equipped with line cord and plug; must be hardwired in conduit to 120 VAC power source
- UL/C-UL listed
- One year parts and labor warranty
- Meet NFPA and OSHA guidelines for hazardous locations, Class 1, Division II, Group C & D.
- These units are not intended for use in general clinical or research laboratories.



Compact Laboratory
Refrigerators

Premier Compact Laboratory Refrigerators

Premier Compact Laboratory Refrigerators

The Premier compact laboratory Refrigerators feature a microprocessor temperature controller and display, allow for precise temperature control, verification and recovery versus mechanical style thermostats.

An interior fan driven, forced-draft air circulation system provides excellent temperature uniformity and recovery after door openings. Critical samples and supplies are security backed with an extensive package of audible and visual alarms.

6 Adjustable shelves with guard rail on back to prevent product from being pushed against back wall.



ABT-HC-RFC10PG



The Premier Compact Refrigerators take a large step forward in performance from past solid door general purpose units; offering a Digital temperature display and alarm module coupled with a microprocessor temperature controller.

These models require 4" of clearance around back and sides of the unit for proper ventilation. Improper installation will void the warranty and will lead to temperature maintenance issues, overheating and possible failure.

Model	Cu. Ft.	Defrost	Doors	Shelves	W"	D"	H"	RL	H.P.	Amps
ABT-HC-10PG	10.5	Cycle	1 Glass	6 Adj	23 3/4	26 1/2	59	R600a	1/3	2.3
ABT-HC-10PS	10.5	Cycle	1 Solid	6 Adj	23 3/4	26 1/2	59	R600a	1/3	2.3



- Microprocessor temperature controller
- Digital temperature display
- Audible and visual high and low temperature alarms
- Remote alarm contacts
- Adjustable operating temperature range: 1°C to 10°C
- Bottom footed shelf to allow air circulation
- Back wall evaporator cover
- Forced draft circulation
- Keyed door lock
- Magnetic door gasket for positive seal
- Leveling legs
- LED interior light
- Probe access port (3/8")
- Powder coat exterior
- High density urethane foam cabinet insulation
- HFC-free refrigerant (R600a), foam insulation and packaging
- Two year parts and labor warranty, plus an additional three year compressor parts warranty
- Quality certified with 100% unit temperature testing
- Note: This unit must have 4" clearance on sides and back for adequate ventilation
- UL/C-UL listed
- Cycle defrost



Dual Temperature
Refrigerator/Freezer Combos

Premier Dual Temperature Refrigerator/Freezer Combos

Premier Dual Temp Combos

The Premier Dual Temp Combination Refrigerator/Freezers feature separate microprocessor temperature controller allowing for precise temperature control, verification and recovery. An interior fan driven, forced-draft air circulation system provides excellent temperature uniformity and recovery after door openings (REFRIGERATORS ONLY)

All models are equipped with digital temperature displays for convenient monitoring. Critical samples and supplies are security backed with an extensive package of audible and visual alarms. The freezer units feature either an automatic or manual defrost operating system. For manual defrost freezers, periodic manual defrosting is required.

The RFC-9P and RFC-9SSP models are designed with a “front-breathing” ventilation system, eliminating the need for clearance around the top and sides of the unit; enabling the user to incorporate these units into cabinets and other applications where free space is limited. All other models require 4” of clearance around back and sides of the unit for proper ventilation. Improper installation will void the warranty and will lead to temperature maintenance issues, overheating and possible failure.



ABT-HC-RFC12



ABT-HC-RFC12G

Model	Cu. Ft.	Defrost	Doors	Shelves	W"	D"	H"	RL
ABT-HC-RFC12G	10.5/1.7	Cycle/Manual	1 Glass Ref/1 Solid Fr	6 Adj Ref/2 Adj Fr	23 3/4	26 1/2	80 1/4	R600a
ABT-HC-RFC12	10.5/1.7	Cycle/Manual	2 Solid	6 Adj Ref/2 Adj Fr	23 3/4	26 1/2	80 1/4	R600a
ABT-HC-RFC12A	10.5/1.3	Cycle/Auto	2 Solid	6 Adj Ref/2 Adj Fr	23 3/4	26 1/2	80 1/4	R600a
ABT-HC-RFC12GA	10.5/1.3	Cycle/Auto	2 Glass	6 Adj Ref/2 Adj Fr	23 3/4	26 1/2	80 1/4	R600a
ABT-HC-RFC9	4.6/4.2	Cycle/Manual	2 Solid	2 Adj, 1 Fixed Ref/2 Fixed Fr	23 3/4	25 1/2	66 3/4	R600a
ABT-HC-RFC9-LH	4.6/4.2	Cycle/Manual	2 Solid	2 Adj, 1 Fixed Ref/2 Fixed Fr	23 3/4	25 1/2	66 3/4	R600a
ABT-HC-RFC9G	4.6/4.2	Cycle/Manual	1 Glass Ref/1 Solid Fr	2 Adj, 1 Fixed Ref/2 Fixed Fr	23 3/4	25 1/2	66 3/4	R600a
ABT-HC-RFC9G-LH	4.6/4.2	Cycle/Manual	1 Glass Ref/1 Solid Fr	2 Adj, 1 Fixed Ref/2 Fixed Fr	23 3/4	25 1/2	66 3/4	R600a
ABT-HC-RFC9SS	4.6/4.2	Cycle/Manual	2 Solid	2 Adj, 1 Fixed Ref/2 Fixed Fr	23 3/4	24 1/2	66 3/4	R600a
ABT-HC-RFC9SS-LH	4.6/4.2	Cycle/Manual	2 Solid	2 Adj, 1 Fixed Ref/2 Fixed Fr	23 3/4	24 1/2	66 3/4	R600a
ABT-HC-RFC7	5.2/1.5	Cycle/Manual	1 Glass Ref/1 Solid Fr	3 Adj Ref/2 Adj Fr	23 3/4	24 1/2	53 1/8	R600a
ABT-HC-RFC7A	5.2/1.5	Cycle/Auto	1 Glass Ref/1 Solid Fr	3 Adj Ref/2 Adj Fr	23 3/4	24 1/2	53 1/8	R600a
ABT-HC-RFC16A	13/3	Cycle/Auto	2 Solid	1 Fixed Fr/3 Adj Ref	29 1/2	29 1/2	78	R134a

- Microprocessor temperature controller, refrigerator and freezer
- Digital temperature display, refrigerator and freezer
- Adjustable operating temperature range:
Refrigerator: 1°C – 10°C
Freezer: -15°C – -25°C
- Audible and visual high and low temperature alarms, refrigerator and freezer

- Remote alarm contacts, refrigerator and freezer
- Forced draft circulation Refrigerator
- Keyed door locks
- Magnetic door gasket for positive seal
- Integrated door handles
- Leveling legs
- LED interior light



The Premier Dual Temp units take a large step forward in performance from past solid door general purpose units; offering a Digital temperature display and alarm module coupled with a microprocessor temperature controller.

Completely independent display, alarm and compressor.



ABT-HC-RFC9

Both units feature digital displays, alarms and remote alarm contacts.



ABT-HC-RFC7



- Two probe access ports (3/8"); one, refrigerator/one, freezer
- White powder coated exterior
- HFC-free refrigerant (R600a), foam insulation and packaging
- Quality certified with 100% unit temperature testing
- Two year parts and labor warranty, plus an additional three year compressor parts warranty
- Defrost:

- Refrigerator: Cycle defrost
- Freezer: Auto & Manual defrost available
- UL/C-UL listed
- *Please note these units (excluding the ABT-RFC-16A) requires 2 outlets.

Standard Dual Temperature Refrigerator/Freezer Combos

Standard Dual Temp Refrigerator/Freezer Combos

The Standard Dual Temperature Combination Refrigerator/Freezer units are intended for general purpose applications only where precise temperature control and maintenance are not essential and there are no requirements for temperature alarms.

Select models have freezers which feature a manual defrost operating system to limit product-damaging temperature spikes found in auto defrost units. Periodic manual defrosting is required.

Models with auto defrost freezer compartments have programmed defrost cycles that will reach air temperatures of approximately 0°C.



Designed specifically for General Purpose applications; where precise temperature control, maintenance and alarms are not necessary

ABT-RFC-20A

Model	Cu. Ft.	Defrost	Doors	Shelves	W"	D"	H"	RL	H.P.	Amps
ABT-RFC-17A	17	Auto	2 Solid	2 Adj/1 Fixed Ref	28 1/2	32	65	R134a	1/4	6
ABT-RFC-20A	20	Auto	2 Solid	1 Fixed Fr, 2 Adj/1 Fixed Ref	30	34 1/4	68 1/2	R134a	1/4	6
ABT-RFC-30M	30	Manual	1 Solid	3 Adj, Ref	35 3/4	35 1/2	72 1/2	R134a	1/3	6

- Mechanical thermostat
- Adjustable operating temperature range:
Refrigerator: 1°C – 10°C
Freezer: -15°C – -25°C
- Magnetic door gasket for positive seal
- Heavy duty door handles
- Leveling legs
- Two probe access ports (3/8"); one, refrigerator/one, freezer



Mechanical thermostat with adjustable operating temperature range.

ABT-RFC-17A

- White textured cabinet and door
- High density urethane foam cabinet and door insulation
- CFC-free (R134a) refrigerant, foam insulation and packaging
- Two year parts and labor warranty, plus an additional three year

- compressor parts warranty
- Defrost:
 - Refrigerator: Cycle defrost
 - Freezer: Auto & Manual defrost available

Efficient, reliable choices.

Meeting your application and budget, laboratory cold storage applications can vary greatly. Whatever the requirement, ABS® offers a comprehensive choice of purpose built laboratory and pharmacy refrigerators and freezers help satisfy the requirements of a specific application while easing demand on your budget.



ABS  American BioTech Supply

125 Varnfield Drive, Summerville SC USA

T 800.648.4041 F 843.821.8051

<http://www.americanbiotechsupply.com/>