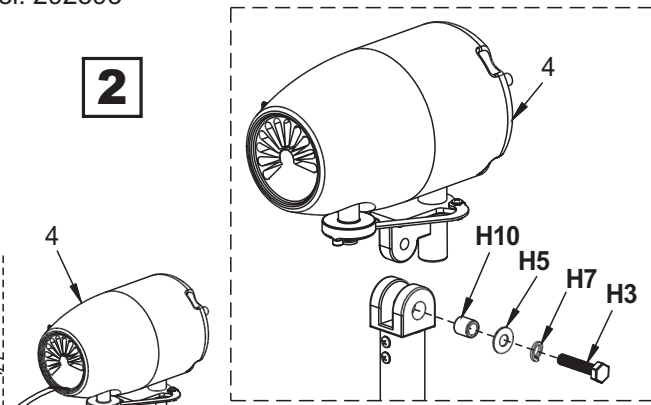
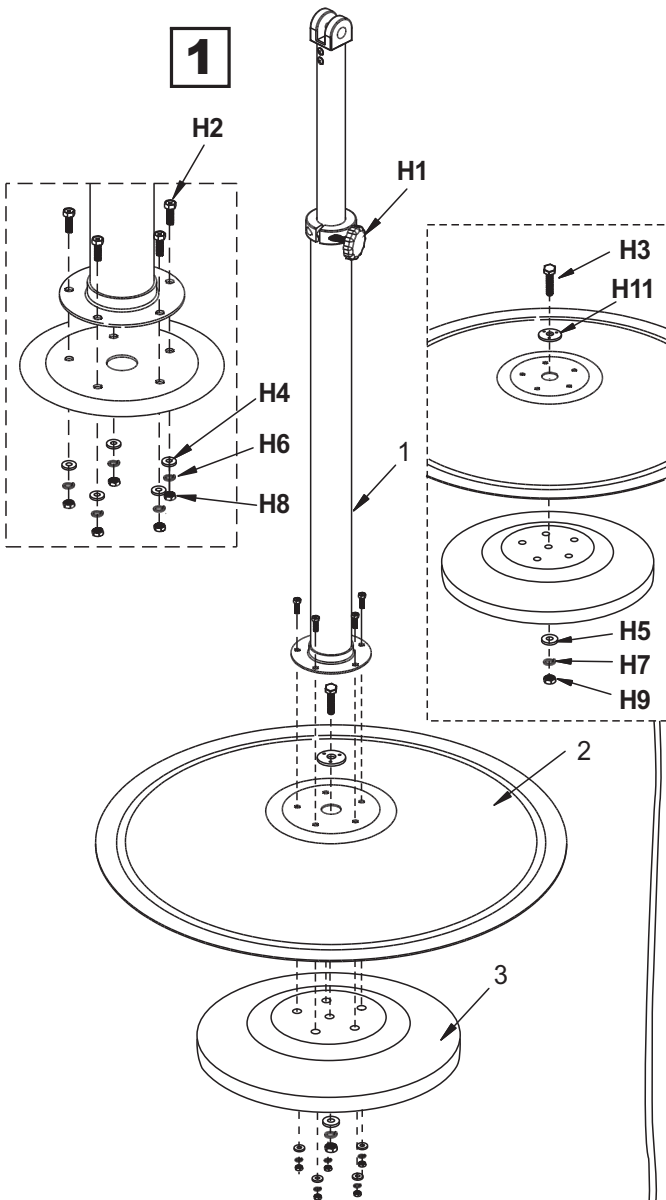


Assembly Instructions	Instrucciones de Ensamblaje	Directives d'assemblage
Customer Service US: 1-800-645-2986	Servicio de atención al Cliente México: 01.800.681.6940	Service à la clientèle Canada: 888-645-2986

Deluxe Industrial Pedestal Fan

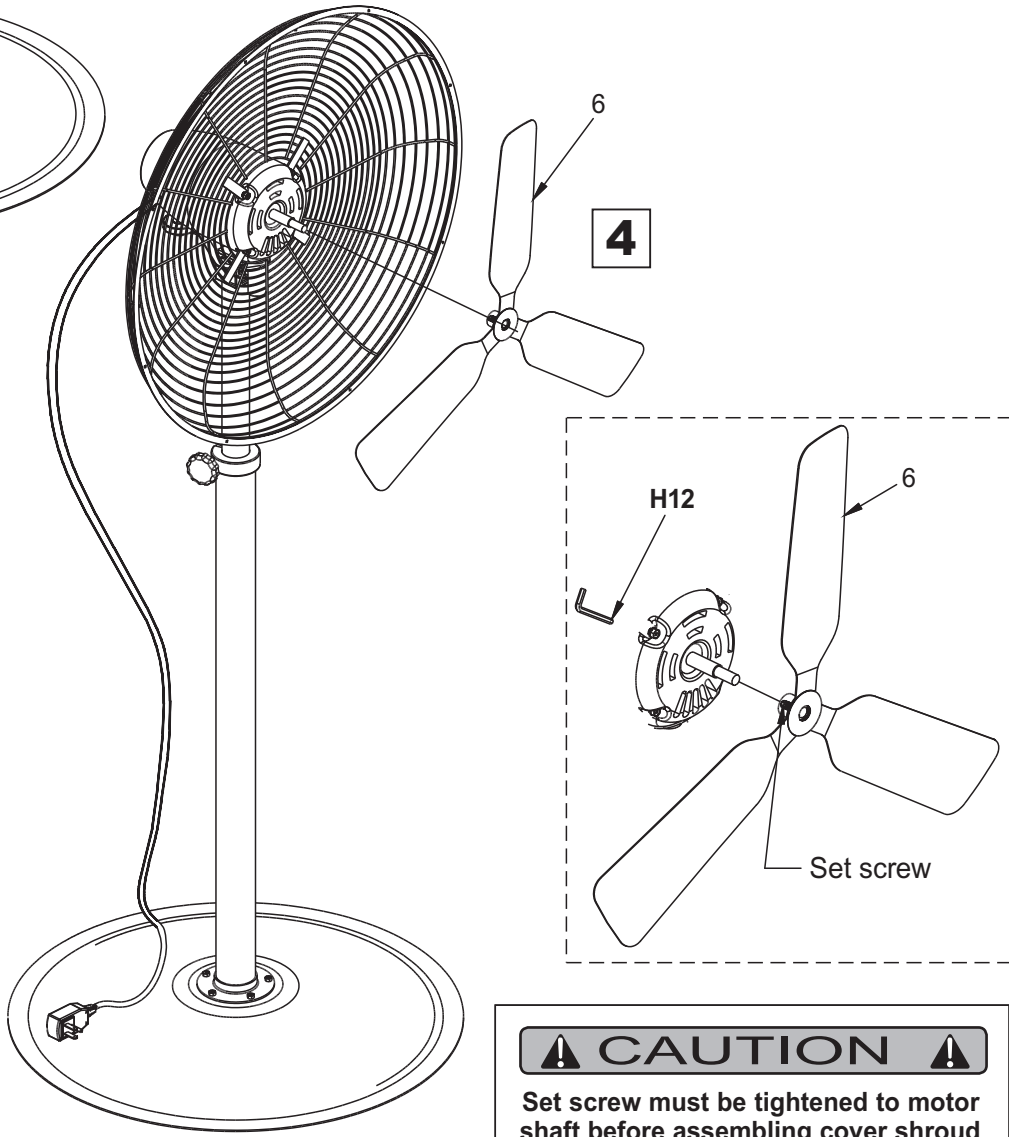
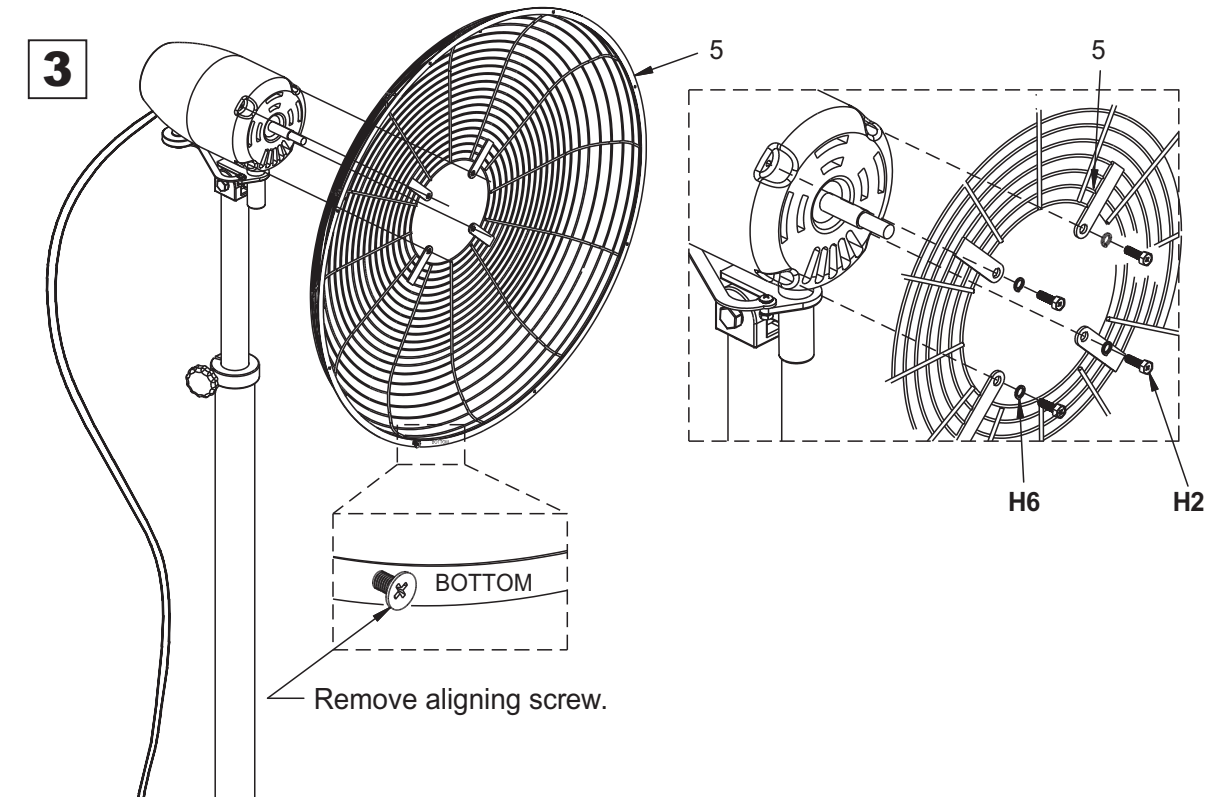
Model: 292593



CONTENTS		
Ref.	Qty.	Description
1	1	Post
2	1	Base Plate
3	1	Weight
4	1	Fan Motor
5	1	Back Shroud
6	1	Fan Blade
7	1	Cover Shroud
H1	1	M6 x 1.0 Adjustment Knob
H2	9	M6 x 1.0 x 18mm Lg. Hex Bolt
H3	2	M10 x 1.5 x50mm Lg. Hex Bolt
H4	9	Plain Washer Φ6 x Φ15 x1.0mm
H5	2	Plain Washer Φ10 x Φ20 x1.5mm
H6	9	Split Washer Φ6 x 1.5mm
H7	2	Split Washer Φ10 x 2.0mm
H8	5	M6 x 1.0mm Hex Nut
H9	1	M10 x 1.5mm Hex Nut
H10	1	Bushing
H11	1	Plain Washer Φ10 x Φ52 x2.5mm
H12	1	4mm Allen Key

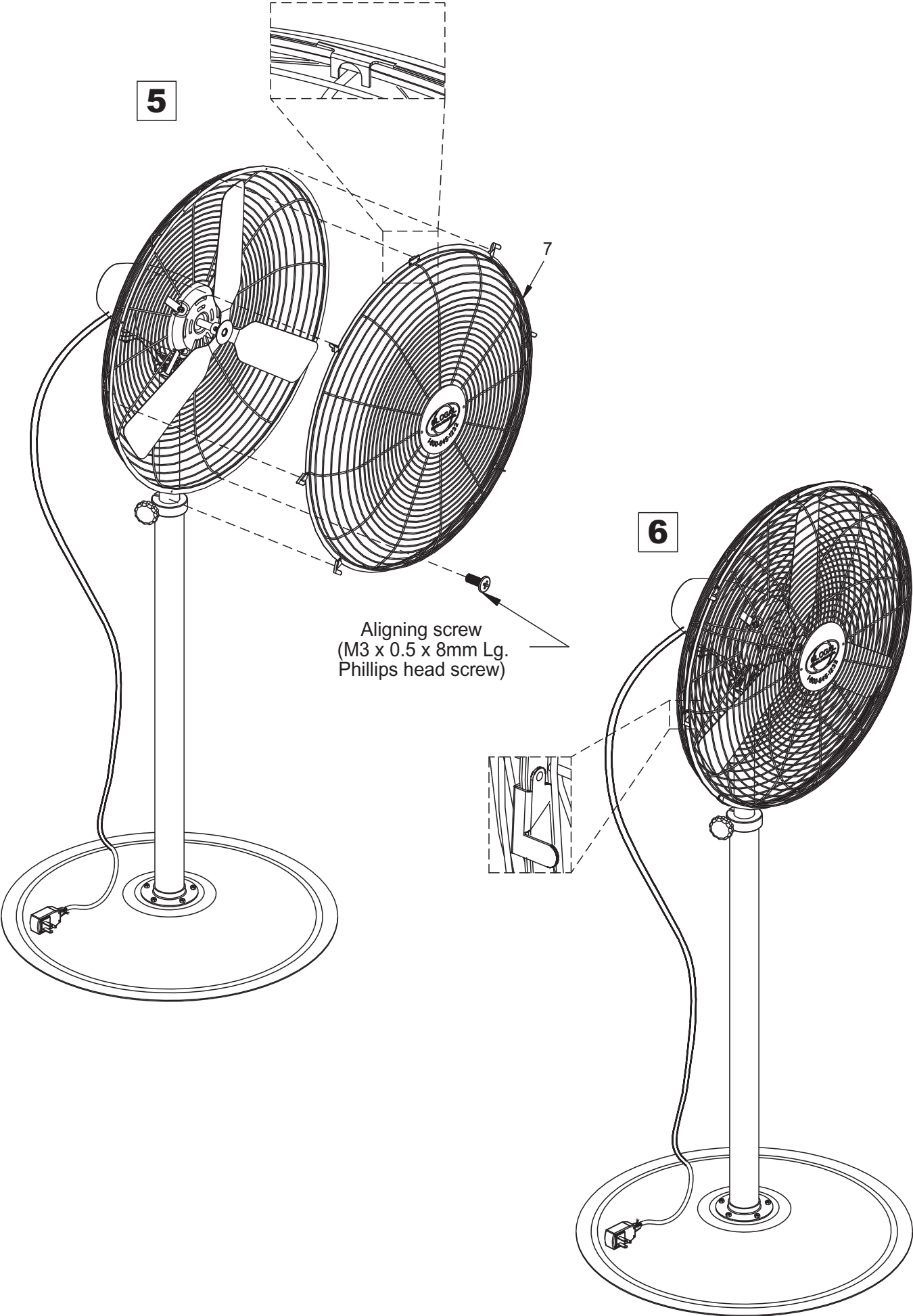
CAUTION
Make sure all nuts and bolts are fully tightened before assembling fan motor.

Deluxe Industrial Pedestal Fan



⚠ CAUTION ⚠
Set screw must be tightened to motor shaft before assembling cover shroud.

Deluxe Industrial Pedestal Fan



CAUTION

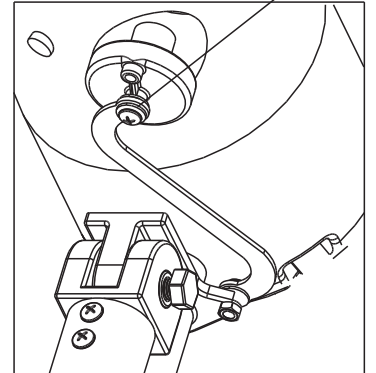
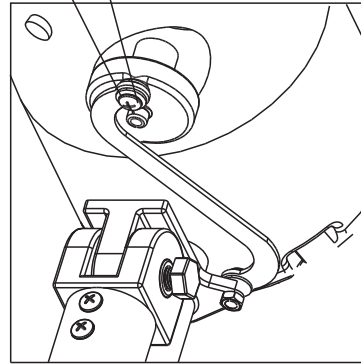
Unplug prior to adjusting.

TO OSCILLATE

M6 x 1.0 Phillips shoulder screw

Oscillate

Fixed



7

Angle adjustment bolt

Height adjustment knob

M5 x 0.8 x 8mm
Phillips pan head screw

Speed selector

Power cord clamp

Power cord

Assembly Instructions

Instrucciones de Ensamblaje

Directives d'assemblage

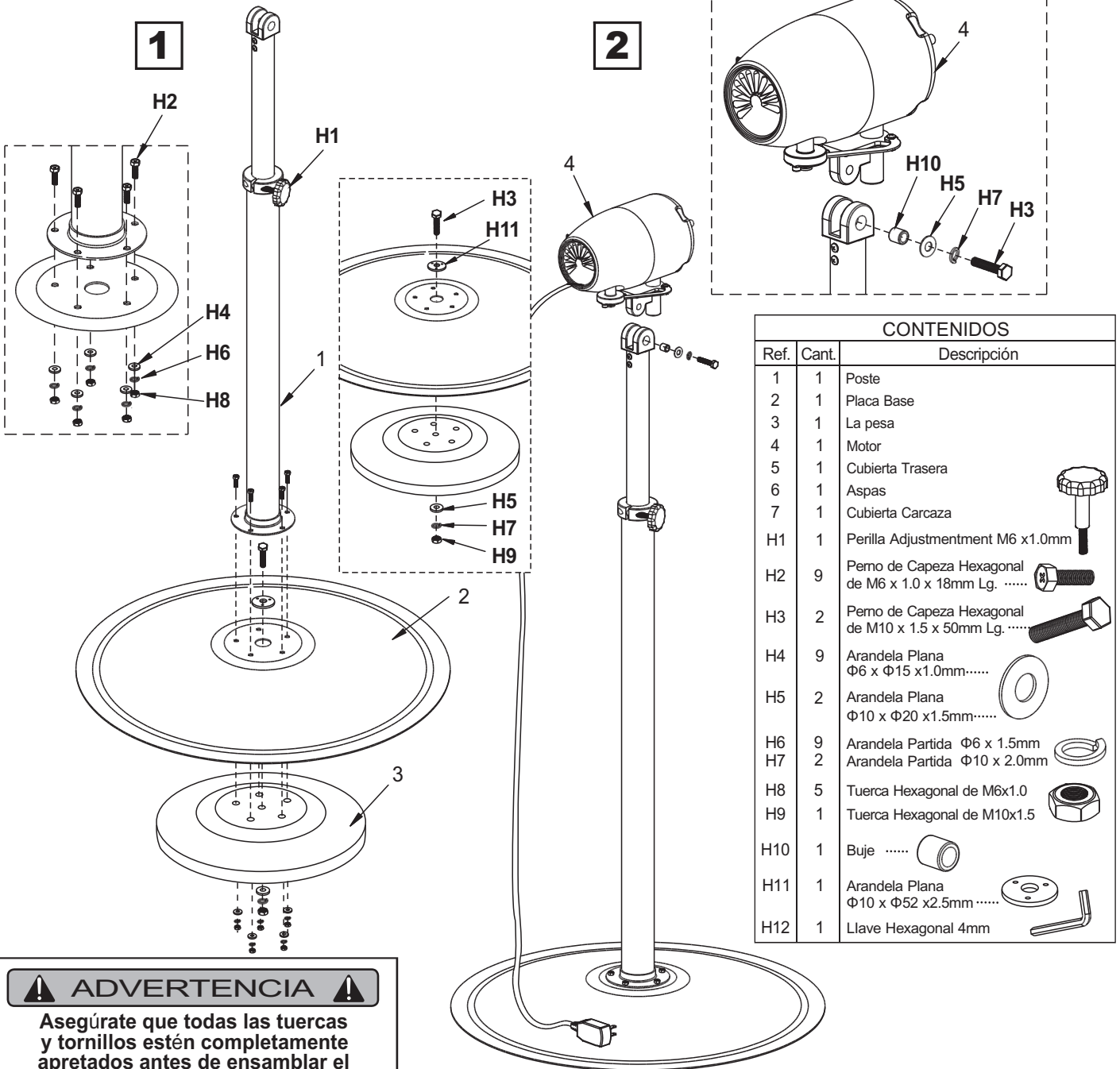
Customer Service
US: 1-800-645-2986

Servicio de atención al Cliente
México: 01.800.681.6940

Service à la clientèle
Canada: 888-645-2986

Ventilador de pie industrial delux

Modelo: 292593

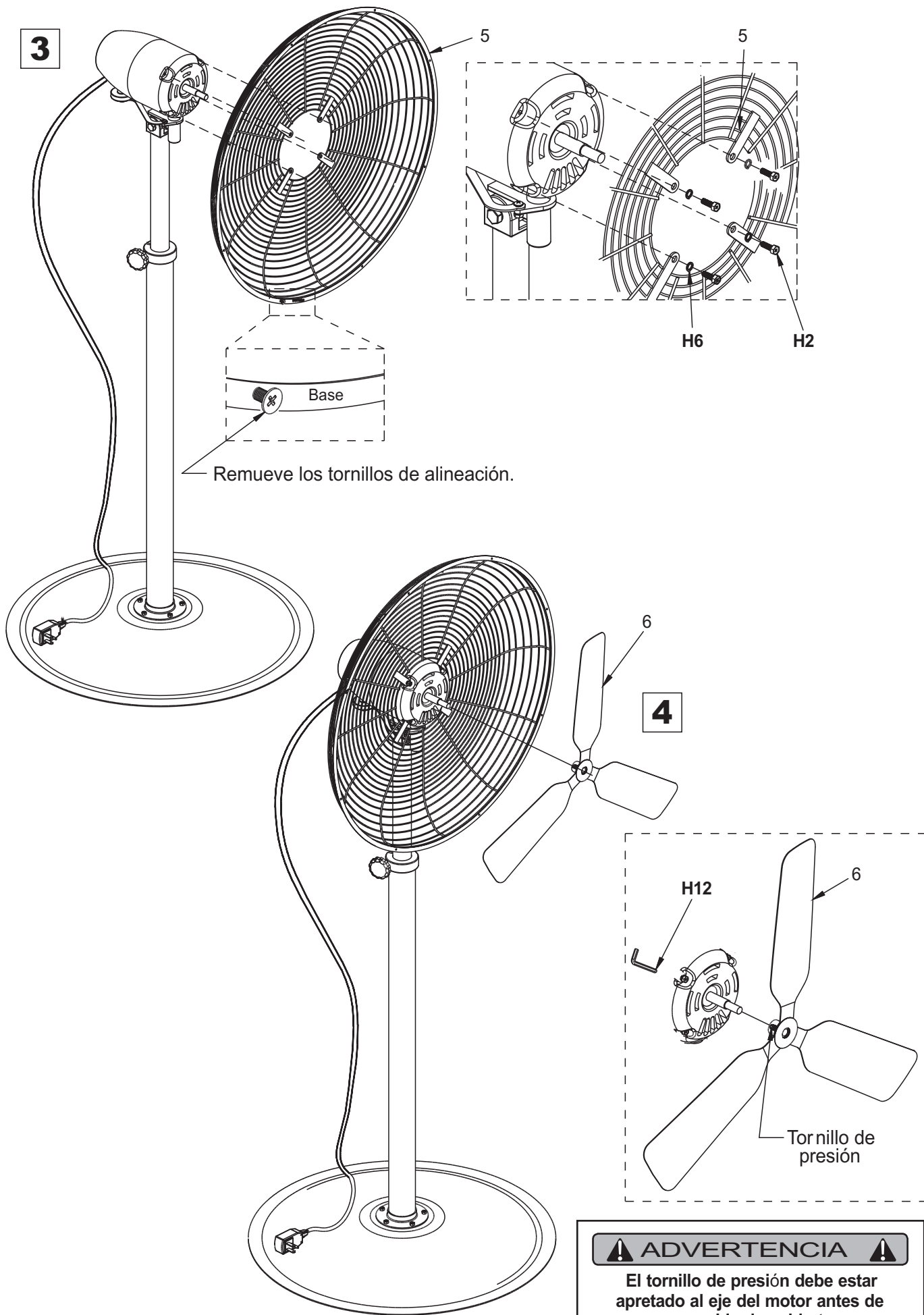


CONTENIDOS		
Ref.	Cant.	Descripción
1	1	Poste
2	1	Placa Base
3	1	La pesa
4	1	Motor
5	1	Cubierta Trasera
6	1	Aspas
7	1	Cubierta Carcaza
H1	1	Perilla Adjustment M6 x1.0mm
H2	9	Perno de Cabeza Hexagonal de M6 x 1.0 x 18mm Lg.
H3	2	Perno de Cabeza Hexagonal de M10 x 1.5 x 50mm Lg.
H4	9	Arandela Plana $\Phi 6 \times \Phi 15 \times 1.0\text{mm}$
H5	2	Arandela Plana $\Phi 10 \times \Phi 20 \times 1.5\text{mm}$
H6	9	Arandela Partida $\Phi 6 \times 1.5\text{mm}$
H7	2	Arandela Partida $\Phi 10 \times 2.0\text{mm}$
H8	5	Tuerca Hexagonal de M6x1.0
H9	1	Tuerca Hexagonal de M10x1.5
H10	1	Buje
H11	1	Arandela Plana $\Phi 10 \times \Phi 52 \times 2.5\text{mm}$
H12	1	Llave Hexagonal 4mm

ADVERTENCIA

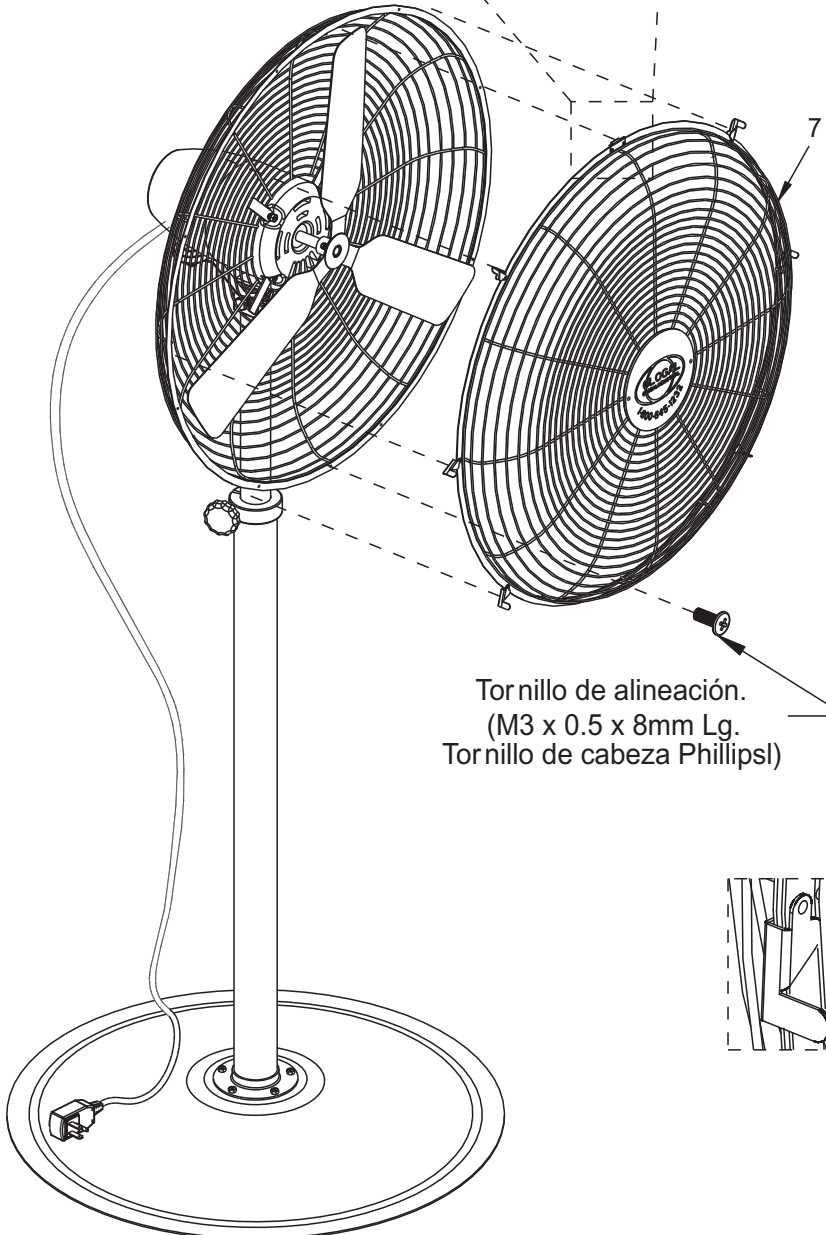
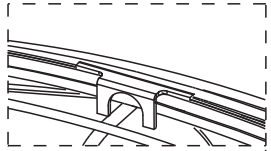
Asegúrate que todas las tuercas y tornillos estén completamente apretados antes de ensamblar el motor del ventilador.

Ventilador de pie industrial deluxe



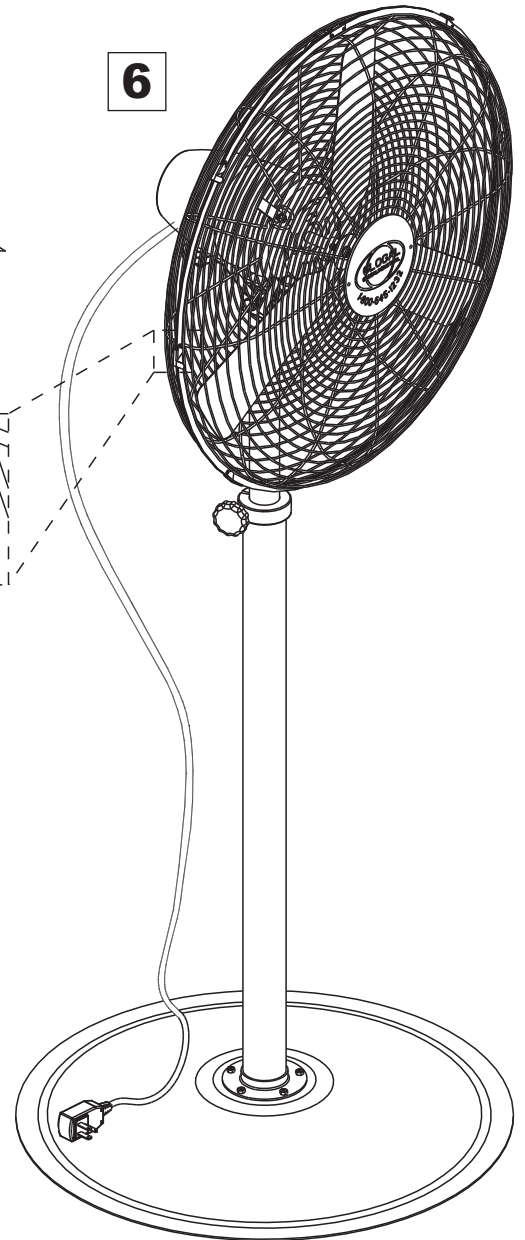
Ventilador de pie industrial delux

5



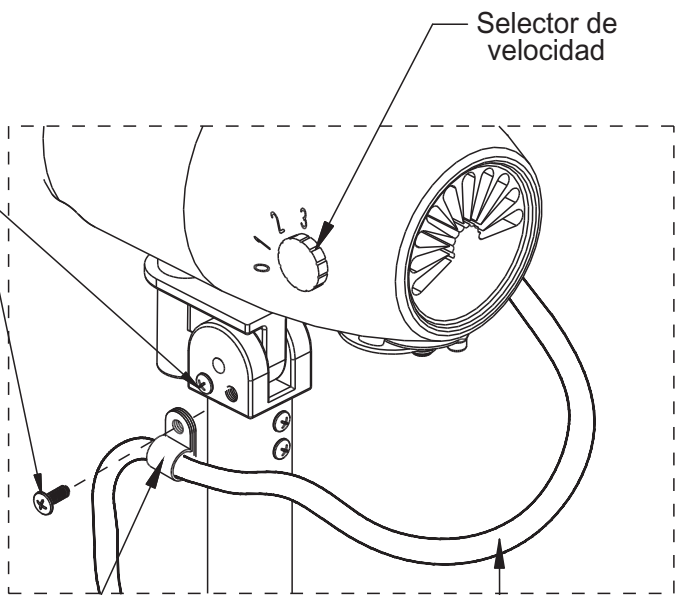
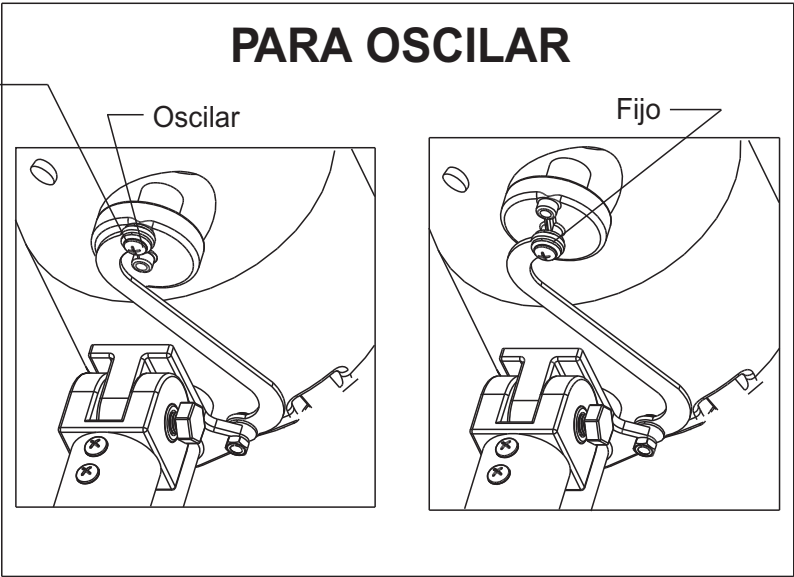
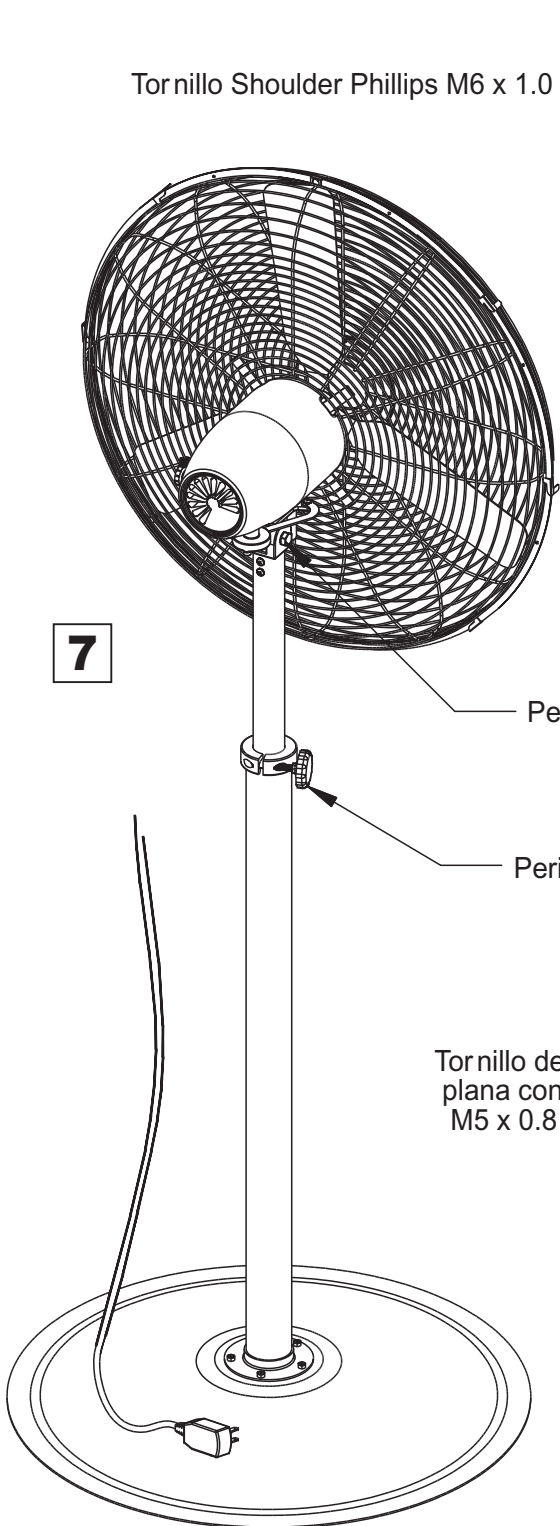
Tornillo de alineación.
(M3 x 0.5 x 8mm Lg.
Tornillo de cabeza Phillips!)

6



Ventilador de pie industrial delux

⚠ ADVERTENCIA ⚠
Retire antes de ajustar.



Abrazadera del cable de alimentación

Cable de alimentación

Assembly Instructions

Instrucciones de Ensamblaje

Directives d'assemblage

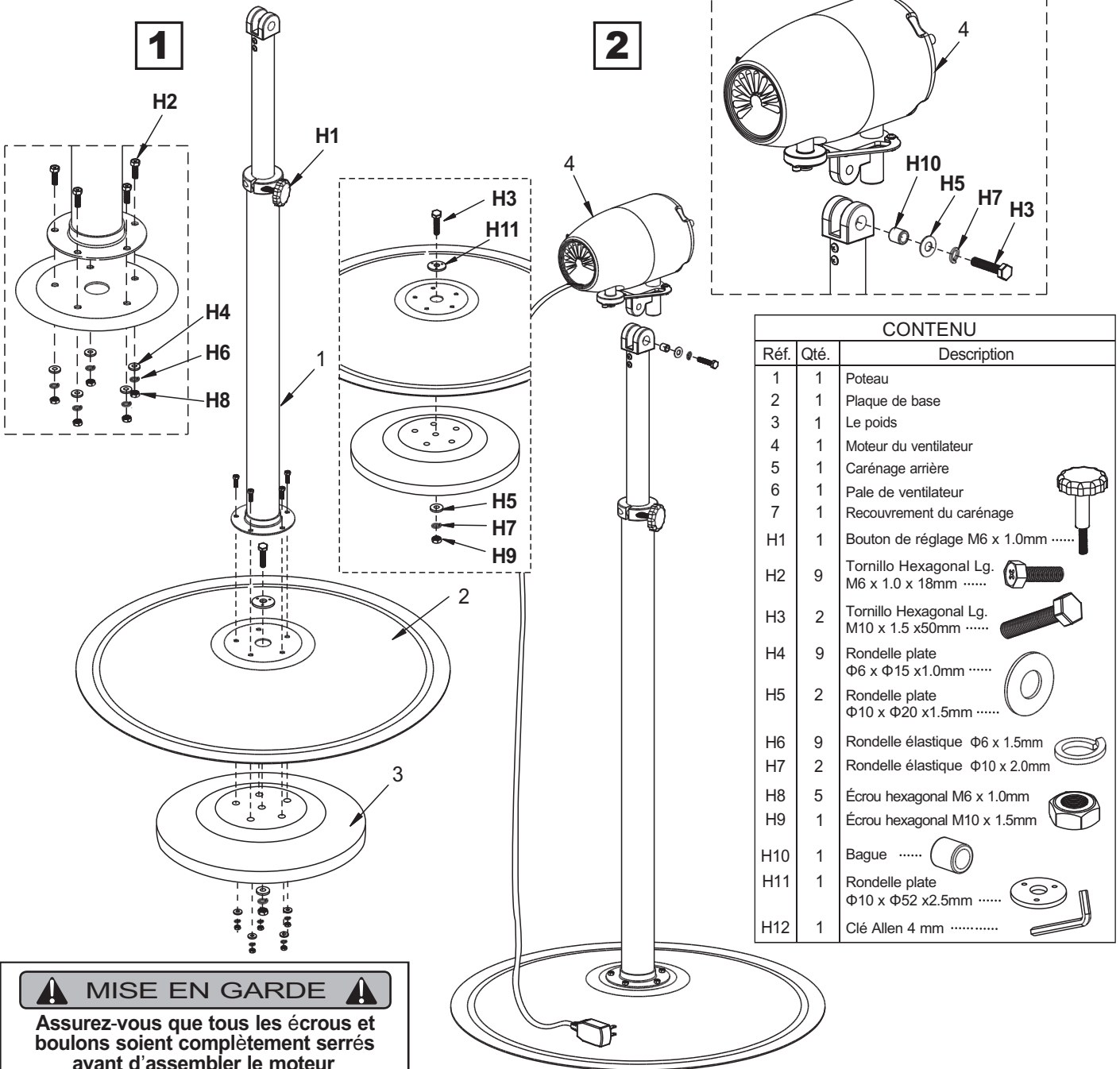
Customer Service
US: 1-800-645-2986

Servicio de atención al Cliente
México: 01.800.681.6940

Service à la clientèle
Canada: 888-645-2986

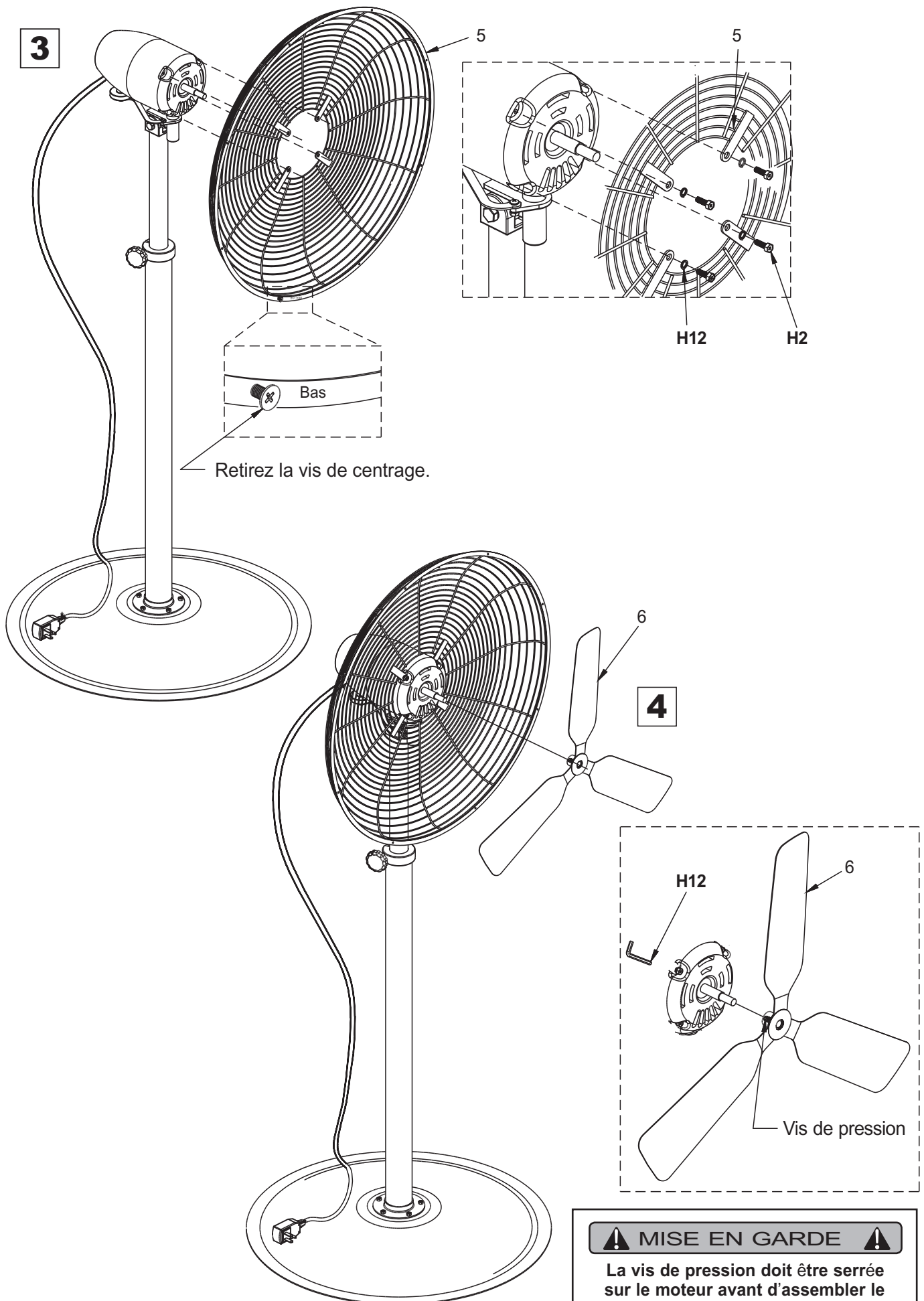
Ventilateur industriel de luxe sur pied

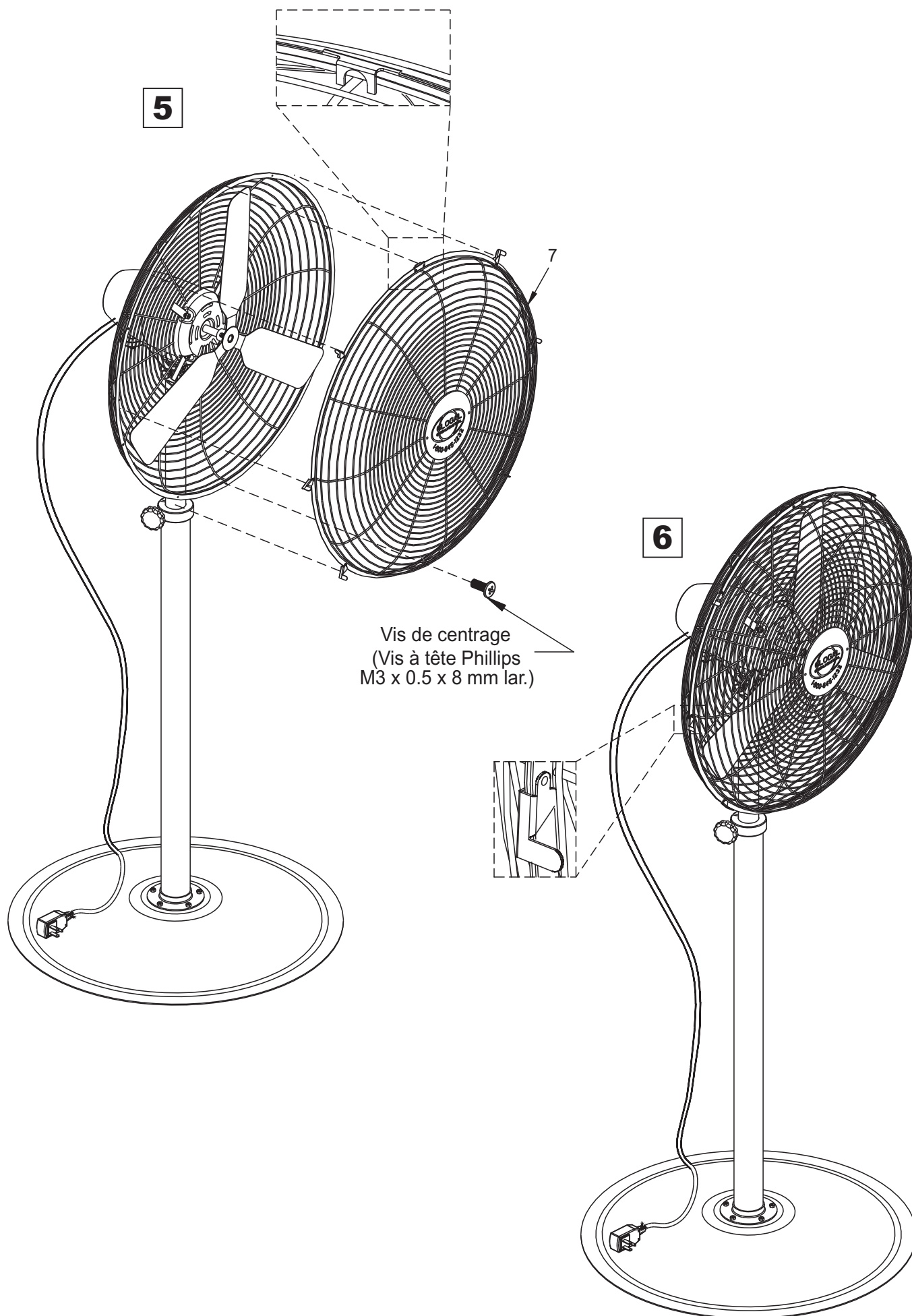
Modèle: 292593



CONTENU		
Réf.	Qté.	Description
1	1	Poteau
2	1	Plaque de base
3	1	Le poids
4	1	Moteur du ventilateur
5	1	Carénage arrière
6	1	Pale de ventilateur
7	1	Recouvrement du carénage
H1	1	Bouton de réglage M6 x 1.0mm
H2	9	Tornillo Hexagonal Lg. M6 x 1.0 x 18mm
H3	2	Tornillo Hexagonal Lg. M10 x 1.5 x50mm
H4	9	Rondelle plate $\Phi 6 \times \Phi 15 \times 1.0\text{mm}$
H5	2	Rondelle plate $\Phi 10 \times \Phi 20 \times 1.5\text{mm}$
H6	9	Rondelle élastique $\Phi 6 \times 1.5\text{mm}$
H7	2	Rondelle élastique $\Phi 10 \times 2.0\text{mm}$
H8	5	Écrou hexagonal M6 x 1.0mm
H9	1	Écrou hexagonal M10 x 1.5mm
H10	1	Bague
H11	1	Rondelle plate $\Phi 10 \times \Phi 52 \times 2.5\text{mm}$
H12	1	Clé Allen 4 mm

⚠ MISE EN GARDE ⚠
Assurez-vous que tous les écrous et boulons soient complètement serrés avant d'assembler le moteur du ventilateur.





⚠ MISE EN GARDE ⚠

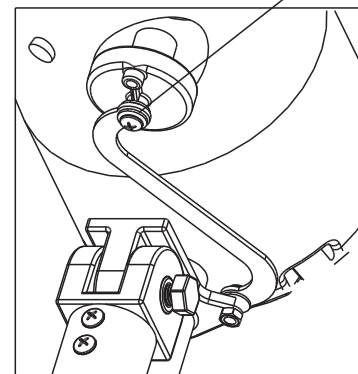
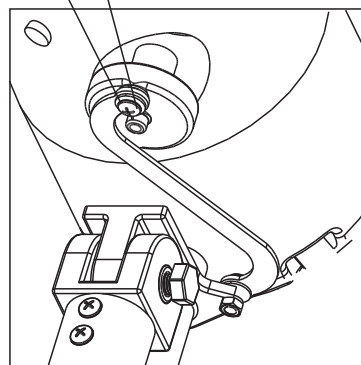
Débranchez avant l'ajustement.

POUR OSCILLER

Vis à épaulement Phillips M6 x 1.0

Osciller

Fixe



7

Boulon de réglage de l'angle

Bouton de réglage de la hauteur

Vis à tête cylindrique
Phillips M5 x 0.8 x 8 mm

Sélecteur de
vitesse

Pince du cordon d'alimentation

Cordon
d'alimentation