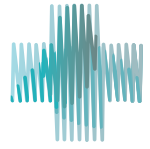




DETECTO®



HEALTHYSOLE®



**8** SECOND  
DISINFECTION  
TIME

DETECTO®



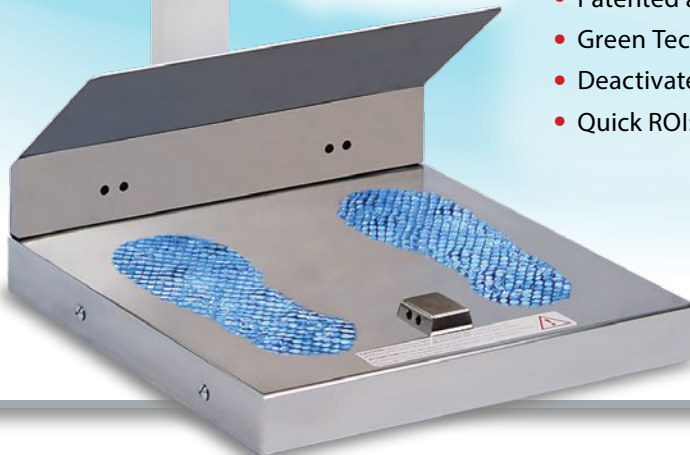
**ACTIVE**  
GERM-CONTROL  
SYSTEM™  
FOR THE  
**SOLES**  
OF YOUR SHOES

**LOWER**  
HEALTHCARE ASSOCIATED  
INFECTIONS

**1st Clinically-Tested UVC Product  
to Kill Germs on the Soles of Shoes**

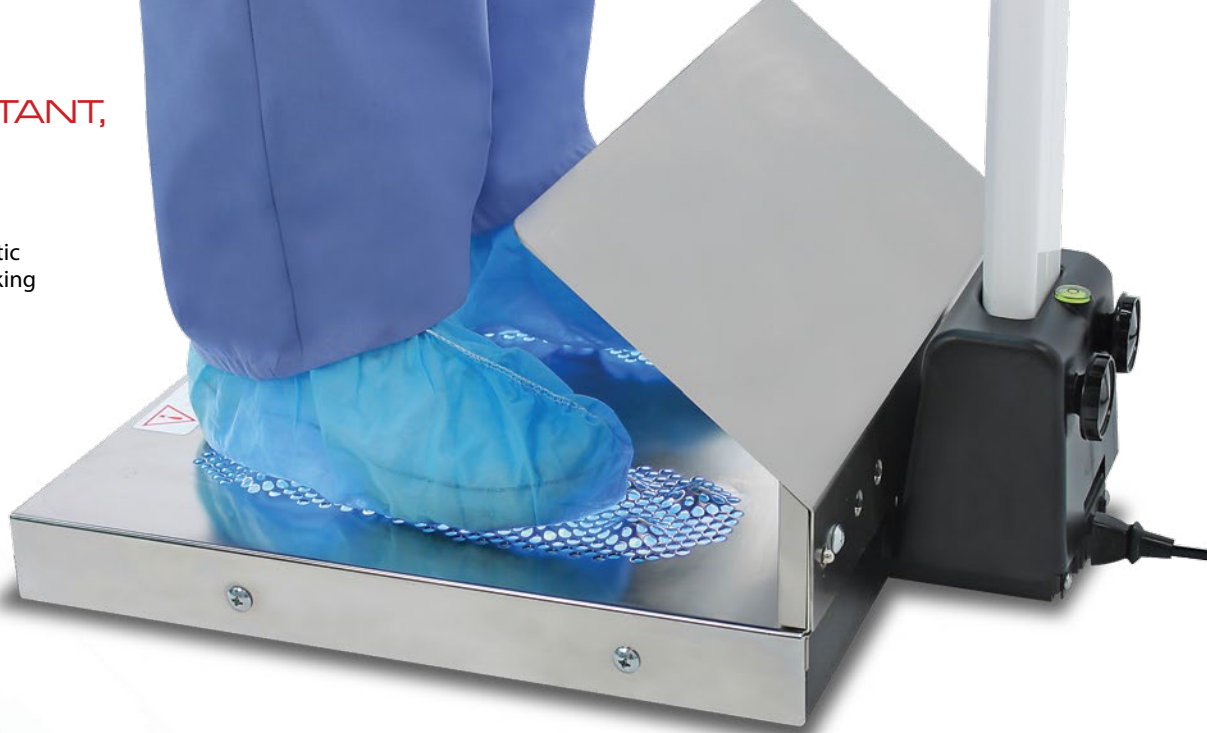


- Kills up to 99.9% of UVC Exposed Germs and Pathogens in One Step
- Patented and Patent-Pending Design (US and worldwide)
- Green Technology Disinfects Without Harmful Chemicals
- Deactivate One of the Main Transport Mechanisms of Germs
- Quick ROI: \$15,275 is Average HAI Patient Cost to a Hospital



## SHATTER-RESISTANT, SELF-CLEANING UVC LAMPS

HealthySole® UVC lamps utilize patented plasma stable and Plastic Encapsulation Technology™, making them shatter resistant, self-cleaning, and ETL listed.



*Shoe soles are one of the worst hosts and carry millions of disease-causing organisms on average per shoe (1,000 average on public toilet seat, for reference).*



### INDEPENDENT CLINICAL LAB TEST RESULTS High Efficacy and Kill Rates in Just 8 Seconds!

|  |                |          |
|--|----------------|----------|
| <b>Staph aureus (MRSA)</b>             | <b>99.98%</b>  | 3.66 log |
| <b>Clostridium difficile (C. Diff)</b> | <b>85.3%</b>   | 0.83 log |
| <b>Enterococcus faecalis (VRE)</b>     | <b>99.75%</b>  | 2.60 log |
| <b>Escherichia coli (CRE)</b>          | <b>99.87%</b>  | 2.87 log |
| <b>Streptococcus pyogenes</b>          | <b>99.994%</b> | 4.20 log |
| <b>Pseudomonas aeruginosa</b>          | <b>99.2%</b>   | 2.08 log |

HealthySole® is an effective and groundbreaking use of UVC technology that eliminates the dangerous organisms that cause HAI's. By introducing HealthySole® into an existing infection control and prevention program, a healthcare facility adds a significant active layer of defense, that once implemented, reduces the rate of airborne, horizontal and cross contamination and does not incur additional labor costs.

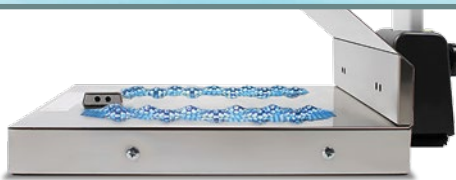
Lowering the overall microbial burden in a healthcare facility, leads to a decrease of HAIs. Facilities who have positive performance standards by lowering HAI's, will reduce the additional treatment cost that is otherwise passed to them, shorten extended length of stay for patients, and save more lives.



Results from independent 3rd party laboratory

#### Hands-Free Operation

Completely hands-free operation via 8-second countdown timer on the full-color display.



#### Ultra-Low-Profile Platform

Nearly-flat, 2.4-inch-high low-profile stainless steel platform measures 17.2 in W x 21 in D.



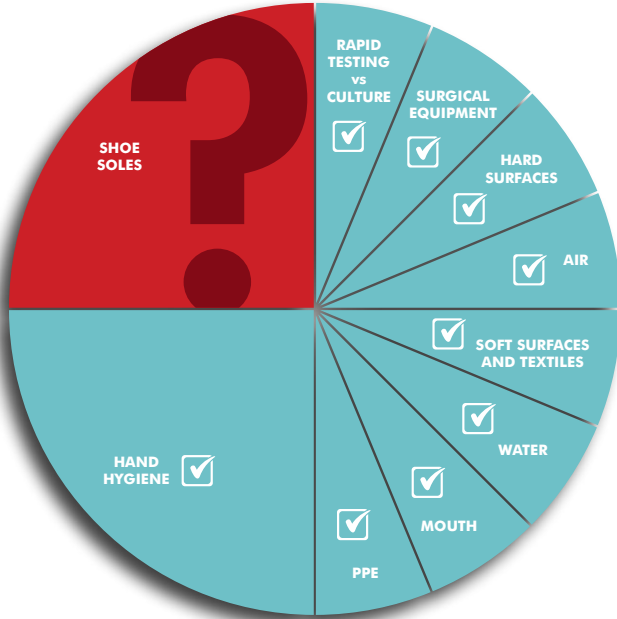
#### UV View™ Top Plate Technology

HealthySole® disinfects both shoes and booties and offers a quick ROI for clinical facilities.

# INFECTION CONTROL AREAS OF CONCERN

Areas related to HAIs currently being addressed through bundling protocols. Lowering the overall microbial load is directly related to lowering infection rates and creates a much safer healthcare environment!

## WHAT AREA HAVE WE MISSED?



DETECTO's USA-made patented and patent-pending HealthySole® is the only clinically-tested UVC germicidal light system to kill and eliminate up to 99.9% of exposed disease causing organisms on the soles of shoes. Germs such as C. diff, MRSA, Staph, and VRE are all transported on the soles of shoes, transmitted to the floor, and aerosolized from air currents, ventilation, and human and equipment movement. These pathogens then land on patients and equipment, they are inhaled, or redeposited back on the floor in a migration cycle for the organisms that costs hospitals \$28-45 billion per year in additional patient care.

\*\*CDC and NIOSH Study: Generation and Behavior of Airborne Particles (Aerosols) P. Baron 2010 cdc.gov

# HEALTHYSOLE®



Environmental surfaces are cleaned regularly, but can be re-contaminated from shoes. Toxigenic C. Diff, C. perfringens, and VRE are highly prevalent in shoe-bottom surfaces in the hospital environs and may have implications with HAIs. Results from shoe swab study in a hospital system concluded 45% of shoes soles positive for C. Diff, 100% positive for C. perfringens, 90% positive for VRE.<sup>1</sup>



Soles of Shoes of medical staff are a source of infection. Doctors shoes were positive for infectious bacteria 56% before rounds and 65% after rounds. Of object examined in this study (including hands) shoes are the largest reservoir of alert bacteria.<sup>2</sup>



In the OR contamination was found on 98% of outdoor shoes, 68% of morning theatre shoes, and 56% of end-of-day theatre shoes. Furthermore, floor bacteria may contribute up to 15% of airborne bacterial CFUs in the OR.<sup>3</sup>



Aerosols generated from a contaminated floor can reach breathing height, are within respirable size range, and could transmit infection.<sup>4</sup>

<sup>1</sup> Alam M J, McPherson J K, Miranda J, Fernando S S, Le L, Amadio J, Garey K W, (2015) Prevalence and characteristics of toxigenic Clostridium difficile, C. perfringens and Enterococcus on shoe-bottoms from a hospital system In: American Society for Microbiology (ASM) Texas Branch Fall Meeting, (poster presentation) Oct 29-31, 2015 (SAM HOUSTON STATE UNIVERSITY, HUNTSVILLE, TX)

<sup>2</sup> Padiuszynska, K.; Gaggis, L.; Rucinska, M.; Pomorski, L. Physicians as an infective vector at a department of surgery. Polski Przegląd Chirurgiczny 2014; 86, 11, 511-517

<sup>3</sup> Amirfeyz R, Tasker A, Ali S, Bowker K, Blom A. Theatre shoes – a link in the common pathway of postoperative wound infection? The Royal College of Surgeons of England 2007; 89: 605-608

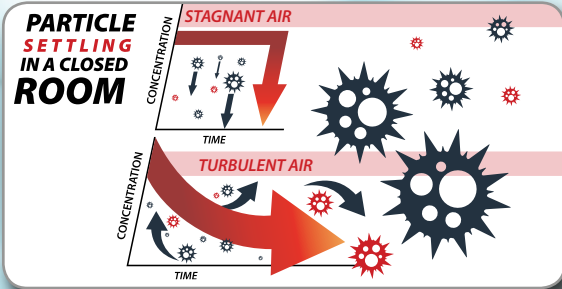
<sup>4</sup> Paton S, Thompson K, Parks SR, Bennett AM. Reaerosolization of Spores from Flooring Surfaces To Assess the Risk of Dissemination and Transmission of Infections. Applied and Environmental Microbiology 2015 Aug;81(15):4914-4919







Turbulent air within clinical facilities is unavoidable. Doors, people, fans, and ventilation systems all create particle transport and aerosolize pathogens initially carried by foot, according to the CDC.



Once pathogens, such as C. Diff, MRSA, Staph, and VRE, are carried into any controlled environment in a healthcare facility by foot, a number of factors will cause them to become airborne and able to infect patients. HealthySole® can actively protect the healthcare environment from germs being tracked in before, during, and after patient care.

|                                  |  |
|----------------------------------|--|
| <b>Model</b>                     | HSPLUS   |
| <b>Display Type</b>              | 3.2 in (diagonal) full color TFT display<br>320 x 240 resolution                           |
| <b>Touch Screen</b>              | Resistive touch panel covering the display   |
| <b>Infra-red Foot Placement</b>  | Four IR sensors located in the base<br>(two for toe of shoes and two for heels of shoes)   |
| <b>Shoe Opening Dimensions</b>   | 12 in L x 4.375 in W<br>(305 mm L x 111 mm W)  |
| <b>Minimum Shoe Size</b>         | Women's Size 6   |
| <b>Maximum Shoe Size</b>         | Men's 13.5   |
| <b>Platform Size (with Feet)</b> | 17.2 in W x 21 in D x 2.4 in H<br>(437 mm W x 533 mm D x 61 mm H)                          |
| <b>System Base Height:</b>       | 8.7 in (221 mm) with Sight Shield and Feet   |
| <b>System Overall Height</b>     | 54.3 in (1379 mm) with Column, Display and Feet  |
| <b>System Capacity</b>           | 500 lb (225 kg)  |
| <b>Net Weight</b>                | 40 lb (18 kg)  |
| <b>Shipping Weight</b>           | 55 lb (24.9 kg)  |
| <b>Construction Materials</b>    | 304 Stainless Steel and Mild Steel construction  |
| <b>Power Requirements</b>        | 90 ~ 264VAC (47 ~ 63Hz) at 1.1A/115VAC (0.7 A/230VAC)                                      |
| <b>Operating Environment</b>     | Operated Temperature Range: 55 to 90 °F (13 to 32 °C)<br>Humidity: 0 to 90% non-condensing |
| <b>UPC Code</b>                  | 809161201802   |



- UV View™ top plate technology, elevates, reflects and refracts UV rays for best possible exposure and kill rates to the soles of your shoes
- 1-year lamp life
- Exclusive Smart Ballast Technology™



HealthySole® assembles easily in just a few seconds without using any tools and includes an AC power cord.



## PARTS LIST

| ITEM            | PART NO.     | QTY. | REPLACEMENT FREQUENCY                 |
|-----------------|--------------|------|---------------------------------------|
| HS DUST SHIELDS | 3300-0247-08 | 12   | Monthly or Quarterly Depending on Use |
| HS UVC LAMPS    | 3300-0248-0A | 2    | After 1-Year of Use                   |
| HS BALLAST      | 6800-1077    | 1    |                                       |



DETECTO reserves the right to improve, enhance, or modify features and specifications without prior notice.



203 E. Daugberty, Webb City, MO 64870 USA  
Ph: 417-673-4631 or 1-800-641-2008 Fax: 417-673-2153

HealthySolePlus.com



Scan this QR code on your smartphone for more product info.

**SOLD BY:**