



- G5025** Drench Hose Unit, Wall Mounted
- G5025BP** Drench Hose Unit, Wall Mounted, with Backflow Preventer

Application: Drench hose unit for wall mounting. Ideal for rinsing any part of user's eye, face or body. *Note: Under ANSI Z358.1-2014, drench hose units supplement, but do not replace, other types of emergency equipment.*

Spray Head: Single FS-Plus™ spray head. Spray head has “flip top” dust cover, internal flow control and filter to remove impurities from the water flow.

Valve: Forged brass squeeze valve activated by stainless steel lever handle. Valve has replaceable stainless steel seat for exceptional durability. Valve closes when lever handle is released.

Hose: 8' reinforced PVC hose. 300 PSI maximum working pressure.

mounting: Wall mounted hook holds unit on wall.

Backflow Preventer: In-line dual check backflow preventer installed on inlet of hose (G5025BP only). *Note: Check with code authority for compliance with local plumbing code.*

Supply: 3/8" NPT male swivel-type inlet.

Sign: ANSI-compliant identification sign.

Quality Assurance: Unit is completely assembled and water tested prior to shipment.

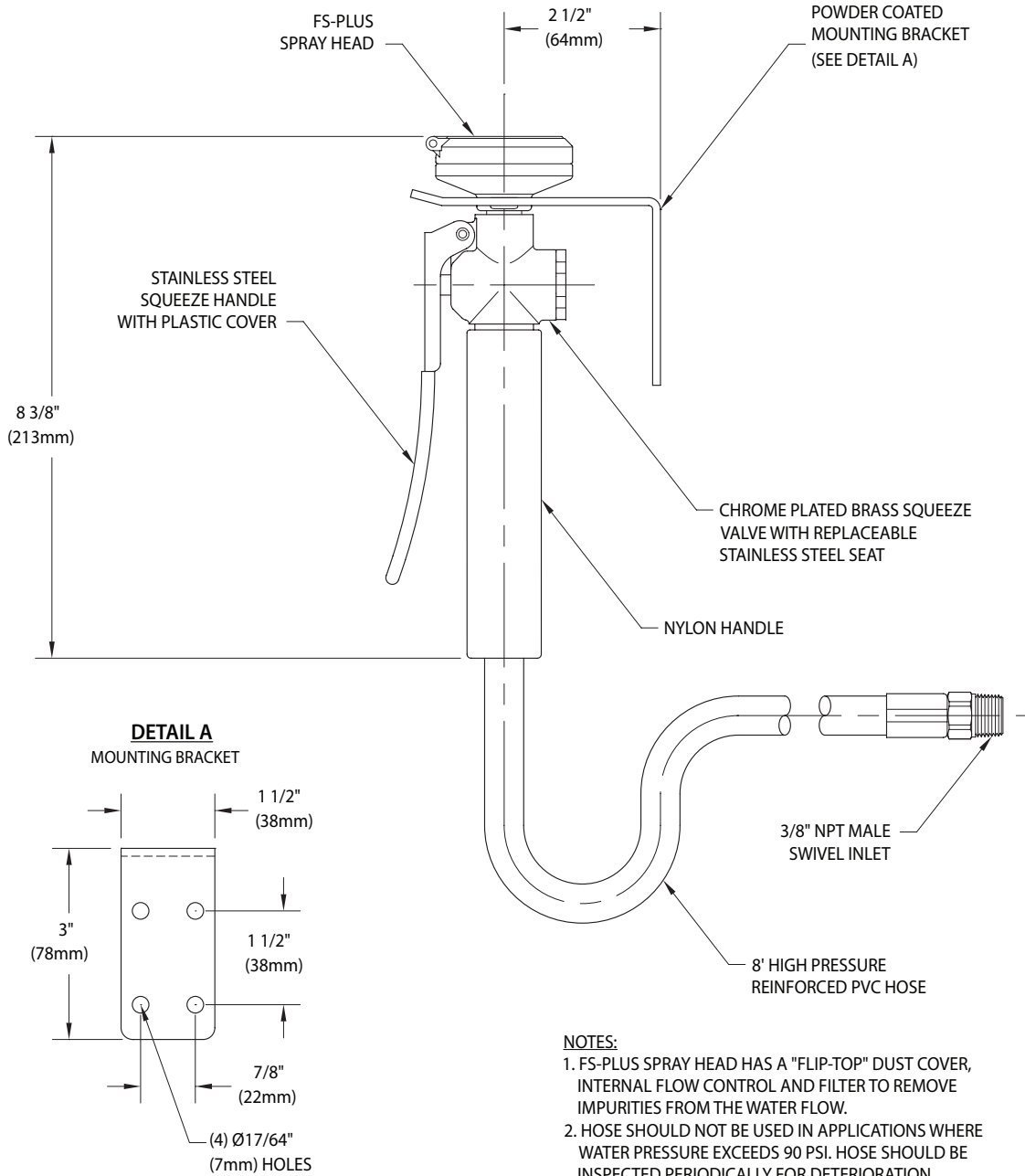
Available Options

- DC** Stainless steel dust cover for spray head.
- FSH** 8 ft. flexible stainless steel hose in place of PVC hose.
- LC** Locking clip for valve handle. Valve stays open until locking clip is released.
- VB** In-line vacuum breaker for installation between valve and spray head.
- TMV** G3600LF thermostatic mixing valve precisely blends hot and cold water to deliver warm (tepid) water as required by ANSI Z358.1-2014. Refer to “Tempering Units” section for complete technical and product selection information.





- **G5025** Drench Hose Unit, Wall Mounted
- **G5025BP** Drench Hose Unit, Wall Mounted, with Backflow Preventer



THIS SPACE FOR ARCHITECT/ENGINEER APPROVAL

Due to continuing product improvement, the information contained in this document is subject to change without notice. All dimensions are ± 1/4" (6mm). rev. 0115

Sign Included

