



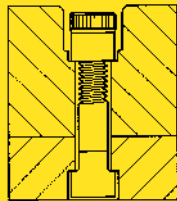
Holo-Krome®
The Difference is Easy To See

800-879-6205 • www.Holo-Krome.com • Wallingford, CT

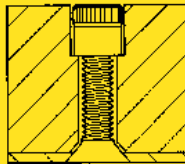
PRODUCT DATA SHEET

Allenuts®

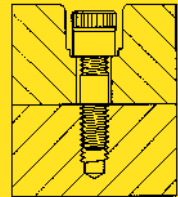
High quality, multi-purpose, internally-threaded fasteners afford compact holding power



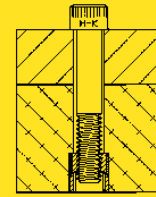
A



B



C



D

Applications

- A. Free application of Allenut in recess with mating member a blind bolt
- B. Allenut used free with flat head capscrew in flush application to obtain surfaces unbroken by projections
- C. Semi-flush applications showing Allenut used free in counterbored hole with stud
- D. Allenut in anchored position used in non-hardened steel, cast iron and the softer non-ferrous metals. Allenuts can be pressed (or drawn by wrenching mating member) into surrounding material to give a strong heat treated thread having greatly increased load carrying capacity. Allenuts can also be molded into plastics, ceramics, fiber and similar materials to provide a high strength thread.

Benefits:

- 12 pt (double hex) socket has 12 drawing points for easier hex key engagement
- Knurled surface allows finger “spinning” to point where wrenching force is required
- Allenuts serve as ready tapped holes, or to replace stripped or worn threads
- Available in a full range of popular sizes, UNC and UNF threads series.
- Allenuts may offer designers significant savings in space weight and materials
- Material: Heat-treated steel or austenitic stainless steel

DIAMETER THREADS PER INCH	KEY SIZE	PRODUCT CODE NUMBER
#4-40	1/8	06032
#5-40	1/8	06034
#6-32	5/32	06036
#8-32	3/16	06038
#10-24	3/16	06040
#10-32	3/16	07030
1/4-20	1/4	06042
1/4-28	1/4	07032
5/16-18	5/16	06044
5/16-24	5/16	07034
3/8-16	3/8	06046
3/8-24	3/8	07036
7/16-14	7/16	06048
7/16-20	7/16	07038
1/2-13	1/2	06050
1/2-20	1/2	07040
5/8-11	5/8	06052
5/8-18	5/8	07042
3/4-10	3/4	06054
3/4-16	3/4	07044
7/8-9	7/8	06056
7/8-14	7/8	07046
1-8	1	06058
1-14	1	07048

Stainless Allenuts

DIAMETER THREADS PER INCH	KEY SIZE	PRODUCT CODE NUM- BER
#4-40	1/8	06070
#6-32	5/32	06072
#8-32	3/16	06074
#10-24	3/16	06076
#10-32	3/16	07060
1/4-20	1/4	06078
5/16-18	5/16	06080
3/8-16	3/8	06082