



A Regal Brand

Catalog # : 096004.00
Product Type: ACSG
Description:

Model: 096004.00
Stock: Y

Engineering Data

RPM	29/24	Volts	110/220	Volts	
HP/KW	.16/.16	F.L. Amps	4/2	F.L. Amps	2.9/1.45
Frame	P42Y	S. F Amps		S. F Amps	
Max Amb	40	Hertz		Phase	1
Insul Class	F4	Duty	CONT	TYPE	PF
		Serv. Factor	1.0/1.0	PF	
Eff 100%		Eff 75%		Enclosure	TEFC
Protection	NOT	Therm.Prot.		Bearing OPE	6201-13
Design		Code	H	Bearing PE	6203
UL	Yes	CSA	Yes	CE	No
Series	PE350	Nameplate	080573	Lubrication	
		Overrlung Ld.	327	Shaft Type	PARALLEL

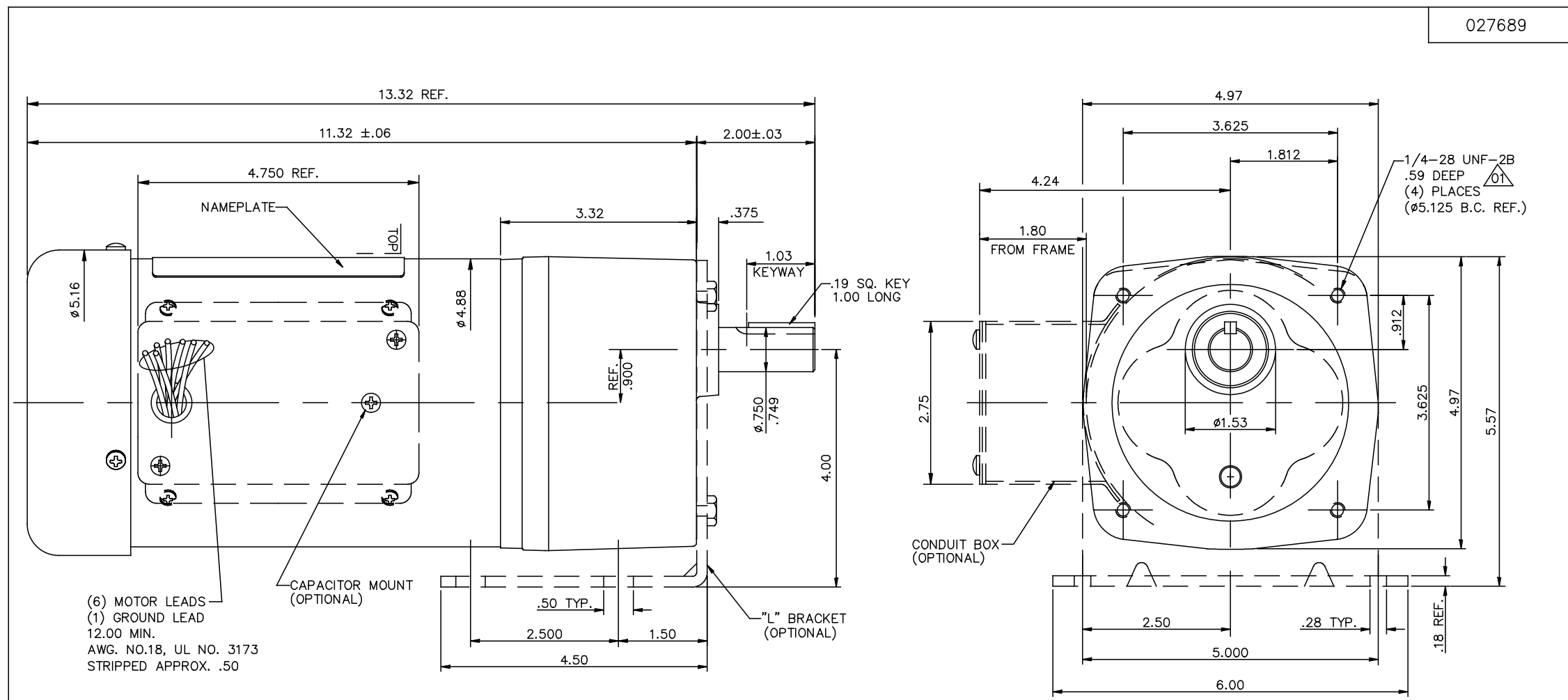
Motor Wt.	29 LB	Mounting	SPECIAL	Rotation	RECONN
Carton Label	Leeson GearMotor	Assembly			
Winding	P47410	Shaft Dia.	3/4	Ext. Diag2.	
GROUP :	3 A	Paint	M1305027.01	Packaging	B
Test Card	01	Outline	027689-096004	Cust Part No	

Form Factor		RMS Amps	
Torque		Peak	
AB Code		Peak@DegC	
Resistance			
Connection		Const Torque	

Rework Status Rework TYPE

4Explosion Proof		2Brake Motors
Temp Op Code		FORCE
Class	GROUP	VDC
Class	GROUP	ADC

027689



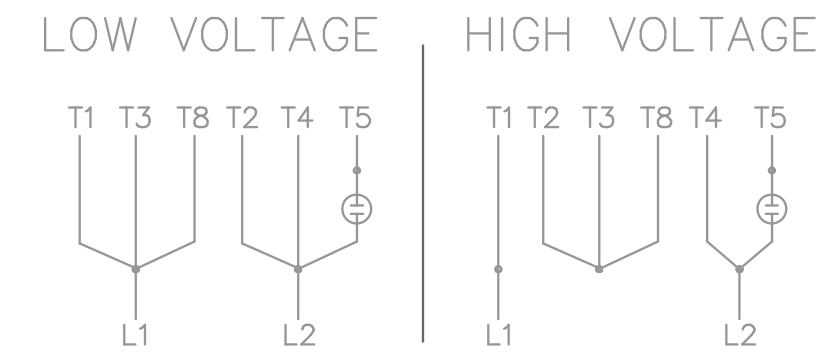
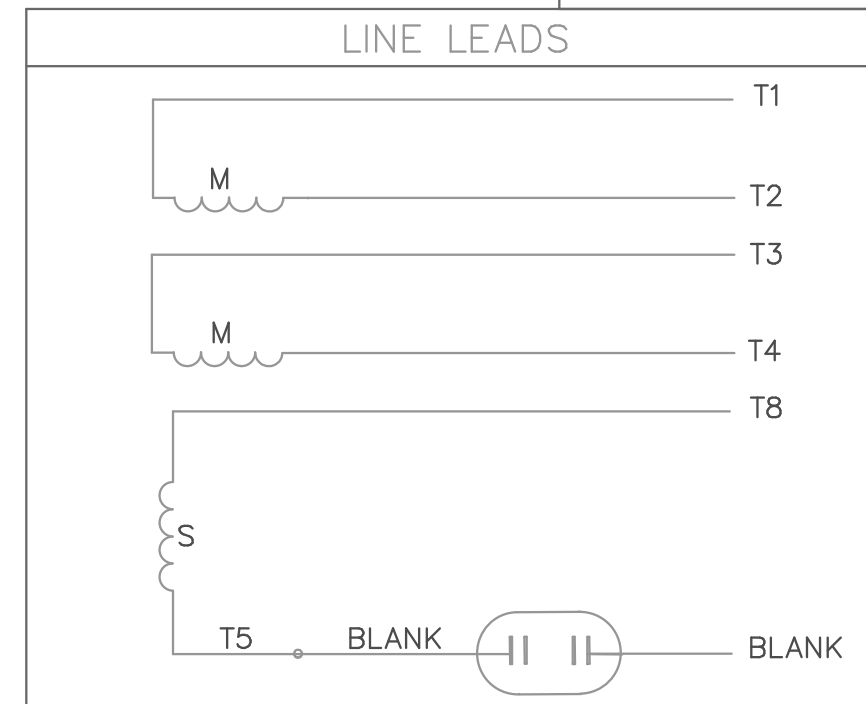
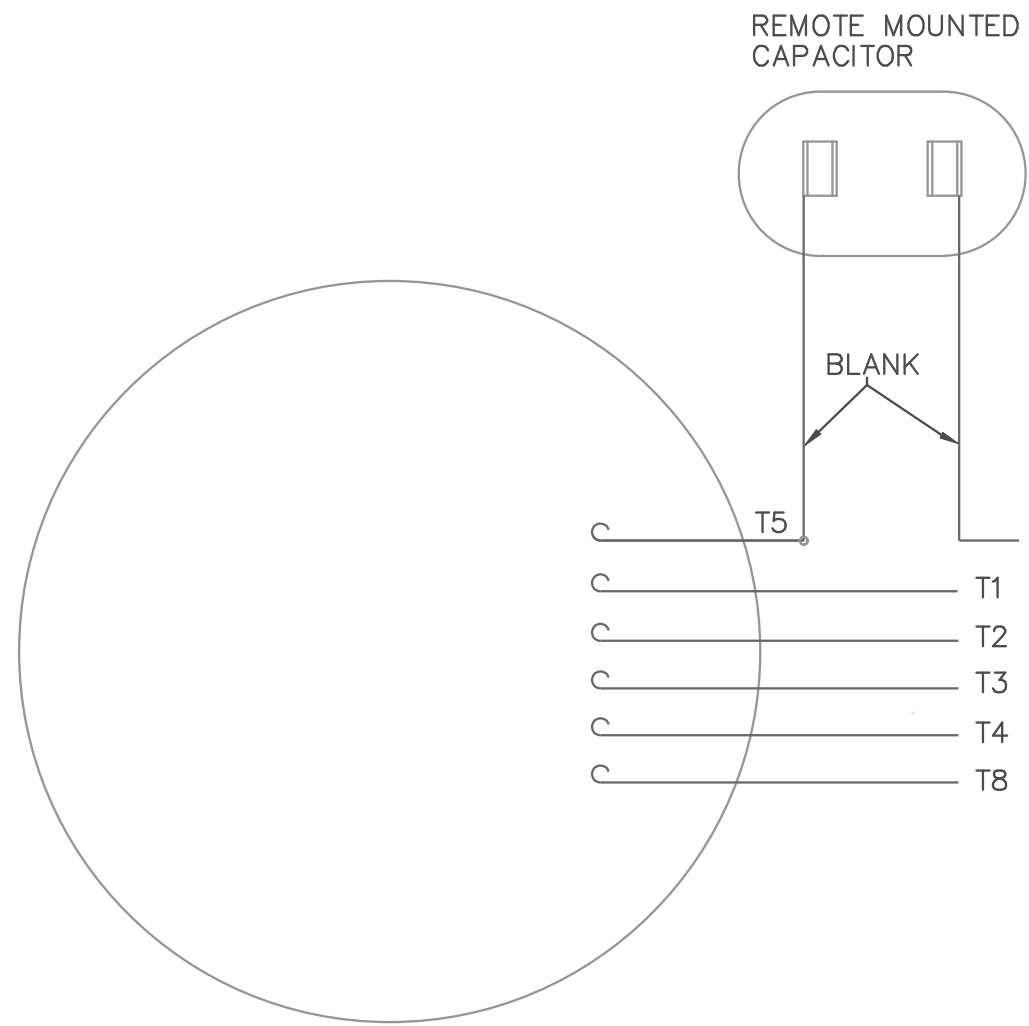
(6) MOTOR LEADS
 (1) GROUND LEAD
 12.00 MIN.
 AWG. NO.18, UL NO. 3173
 STRIPPED APPROX. .50

CATALOG NUMBER	OUTPUT RPM	FULL LOAD TORQUE LB.-IN.	INPUT HP	OVERHUNG LOAD LBS.	RATIO TO 1
096004.00	29	270	1/6	327	58
096005.00	34	250	1/6	330	50
096006.00	40	180	1/6	303	43
096007.00	59	135	1/6	267	29
096008.00	75	90	1/6	256	23
096009.00	113	68	1/6	222	15
096010.00	160	45	1/6	196	10
096011.00	340	25	1/6	190	5

				TOLERANCES UNLESS OTHERWISE SPECIFIED		LEESON ELECTRIC CORPORATION					
				DECIMALS							
				.00	± .01	DRAWN DWF 7/14/97	TITLE			OUTLINE DRAWING	
				.000	± .005	CH'K'D.				42 FRAME PE350 STOCK	
01	THREAD DEPTH WAS .63"	JD	06/06/17	.0000	± .0005	APPR.	MAT'L.				
NO.	REVISION	BY	DATE	FRACTIONS	± 1/64	SCALE	1=1.5	FINISH		DRAWING NO.	
THIS DRAWING IN DESIGN AND DETAIL IS OUR PROPERTY AND MUST NOT BE USED EXCEPT IN CONNECTION WITH OUR WORK ALL RIGHTS OF DESIGN AND INVENTION ARE RESERVED				ANGLES	± 1/2'	REF.	PR970359	LEESON	SIZE	B	027689
				INCH/MM		FMF	092141.00	STOCK			

005108-05

VIEW FROM OUTSIDE OF MOTOR AT LEAD END.



2 STAGE:
C.C.W. ROTATION FACING LEAD END AS SHOWN
INTERCHANGE LEADS T5 & T8 FOR C.W.

3 STAGE:
CW ROTATION FACING LEAD END AS SHOWN
INTERCHANGE LEADS T5 & T8 FOR CCW

				TOLERANCES UNLESS OTHERWISE SPECIFIED		LEESON ELECTRIC CORPORATION				
				DECIMALS						
				.00	± .01	DRAWN DBT 07/21/97	TITLE			
				.000	± .005	CH'K'D.	EXTERNAL WIRING DIAGRAM TYPE "P" W/O PROTECTOR			
				.0000	± .0005	APPR.	MAT'L. TAG - 080689.02 - 2 STAGE TAG - 080689.01 - 3 STAGE			
NO.	REVISION	BY	DATE	FRACTIONS	± 1/64	SCALE 1=1	REF. 005018-01	FINISH LEESON	SIZE A	DRAWING NO. 005108-05
THIS DRAWING IN DESIGN AND DETAIL IS OUR PROPERTY AND MUST NOT BE USED EXCEPT IN CONNECTION WITH OUR WORK. ALL RIGHTS OF DESIGN AND INVENTION ARE RESERVED.				ANGLES	± 1/2°		FMF	GEARMOTORS		
				INCH/MM						