



A Regal Brand

Catalog # : 096009.00
Product Type: ACSG
Description:

Model: 096009.00
Stock: Y

Engineering Data

RPM	113/94	Volts	110/220	Volts	
HP/KW	.16/.16	F.L. Amps	4/2	F.L. Amps	2.9/1.45
Frame	P42Y	S. F Amps		S. F Amps	
Max Amb	40	Hertz		Phase	1
Insul Class	F4	Duty	CONT	TYPE	PF
		Serv. Factor	1.0/1.0	PF	
Eff 100%		Eff 75%		Enclosure	TEFC
Protection	NOT	Therm.Prot.		Bearing OPE	6201-13
Design		Code	H	Bearing PE	6201-13
UL	Yes	CSA	Yes	CE	No
Series	PE350	Nameplate	080573	Lubrication	
		Overrlung Ld.	222	Shaft Type	PARALLEL

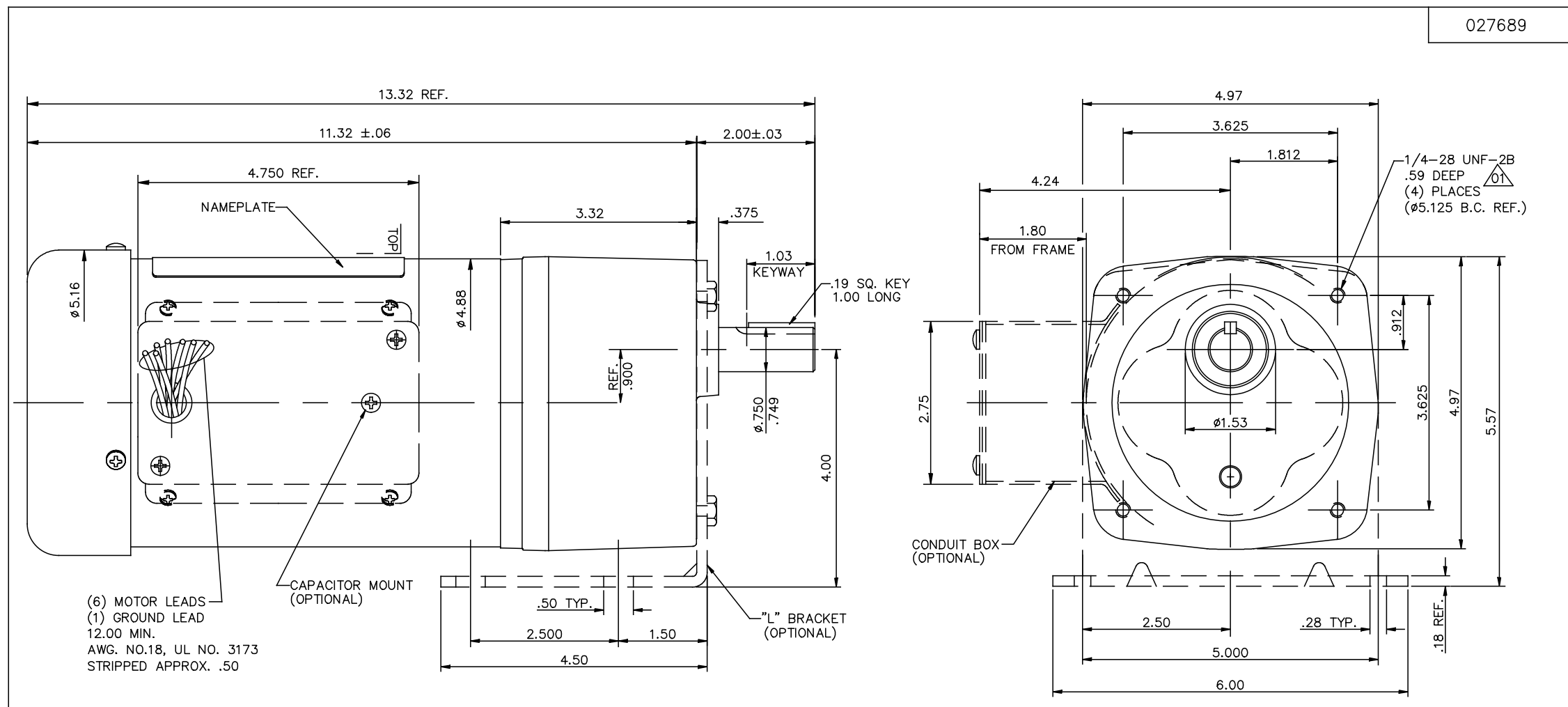
Motor Wt.	29 LB	Mounting	SPECIAL	Rotation	RECONN
Carton Label	Leeson GearMotor	Assembly			
Winding	P47410	Shaft Dia.	3/4	Ext. Diag2.	
GROUP :	3 F	Paint	M1305027.01	Packaging	B
Test Card	01	Outline	027689-096009	Cust Part No	

Form Factor		RMS Amps	
Torque		Peak	
AB Code		Peak@DegC	
Resistance			
Connection		Const Torque	

Rework Status	Rework TYPE
---------------	-------------

4Explosion Proof		2Brake Motors
Temp Op Code		FORCE
Class	GROUP	VDC
Class	GROUP	ADC

027689



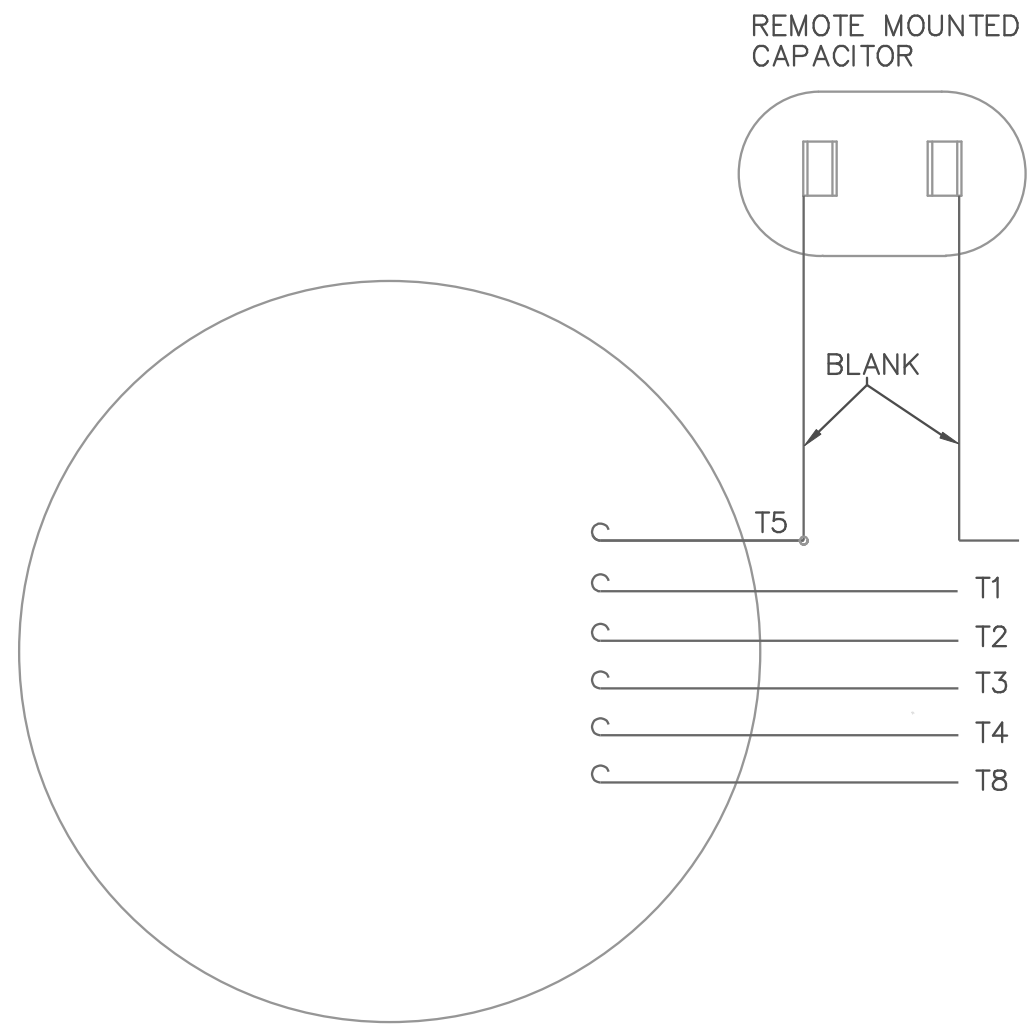
(6) MOTOR LEADS
 (1) GROUND LEAD
 12.00 MIN.
 AWG. NO.18, UL NO. 3173
 STRIPPED APPROX. .50

CATALOG NUMBER	OUTPUT RPM	FULL LOAD TORQUE LB.-IN.	INPUT HP	OVERHUNG LOAD LBS.	RATIO TO 1
096004.00	29	270	1/6	327	58
096005.00	34	250	1/6	330	50
096006.00	40	180	1/6	303	43
096007.00	59	135	1/6	267	29
096008.00	75	90	1/6	256	23
096009.00	113	68	1/6	222	15
096010.00	160	45	1/6	196	10
096011.00	340	25	1/6	190	5

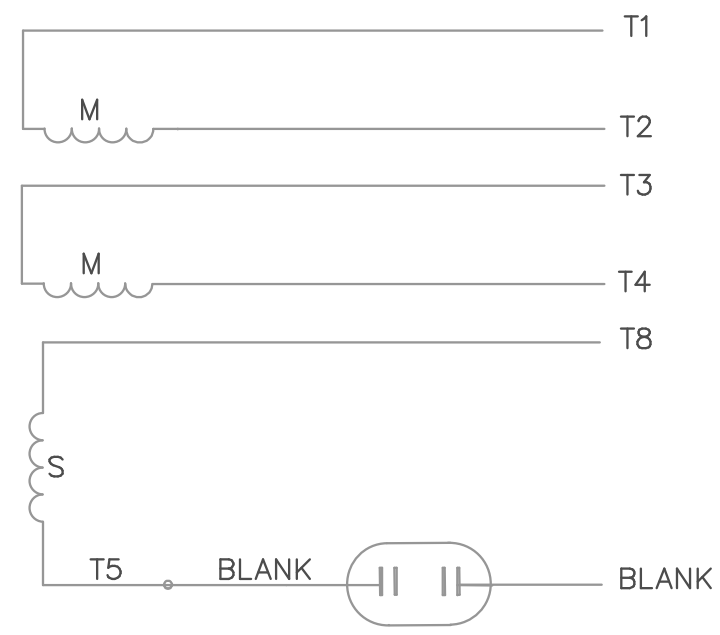
				TOLERANCES UNLESS OTHERWISE SPECIFIED		LEESON ELECTRIC CORPORATION				
				DECIMALS		DRAWN DWF 7/14/97 TITLE OUTLINE DRAWING				
				.00 ± .01		CH'K'D. 42 FRAME PE350 STOCK				
				.000 ± .005		APPR. MAT'L.				
				.0000 ± .0005		SCALE 1=1.5				
01	THREAD DEPTH WAS .63"	JD	06/06/17	FRACTIONS ± 1/64		REF. PR970359		FINISH LEESON	SIZE B	DRAWING NO. 027689
NO. REVISION				BY DATE		FRACTIONS ± 1/2'		FINISH STOCK		DRAWING NO. 027689
THIS DRAWING IN DESIGN AND DETAIL IS OUR PROPERTY AND MUST NOT BE USED EXCEPT IN CONNECTION WITH OUR WORK ALL RIGHTS OF DESIGN AND INVENTION ARE RESERVED										

005108-05

VIEW FROM OUTSIDE OF MOTOR AT LEAD END.

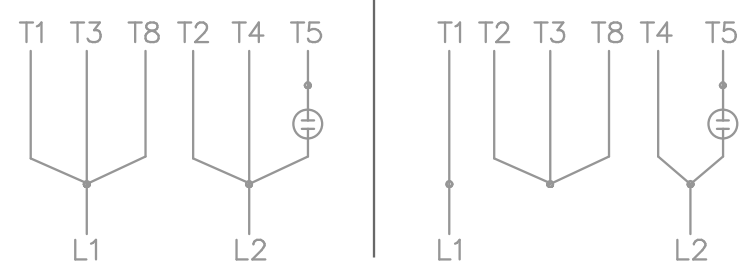


LINE LEADS



LOW VOLTAGE

HIGH VOLTAGE



2 STAGE:
C.C.W. ROTATION FACING LEAD END AS SHOWN
INTERCHANGE LEADS T5 & T8 FOR C.W.

3 STAGE:
CW ROTATION FACING LEAD END AS SHOWN
INTERCHANGE LEADS T5 & T8 FOR CCW

				TOLERANCES UNLESS OTHERWISE SPECIFIED		LEESON ELECTRIC CORPORATION			
				DECIMALS					
				.00	± .01	DRAWN DBT 07/21/97	TITLE EXTERNAL WIRING DIAGRAM TYPE "P" W/O PROTECTOR		
				.000	± .005	CH'K'D.	MAT'L. TAG - 080689.02 - 2 STAGE TAG - 080689.01 - 3 STAGE		
				.0000	± .0005	APPR.	SCALE 1=1		
NO.	REVISION	BY	DATE	FRACTIONS	± 1/64	REF. 005018-01	FINISH LEESON	SIZE A	DRAWING NO. 005108-05
THIS DRAWING IN DESIGN AND DETAIL IS OUR PROPERTY AND MUST NOT BE USED EXCEPT IN CONNECTION WITH OUR WORK ALL RIGHTS OF DESIGN AND INVENTION ARE RESERVED				ANGLES	± 1/2°	FMF	GEARMOTORS		
				INCH/MM					