



A Regal Brand

Catalog # : 096014.00
Product Type: ACSG
Description:

Model: 096014.00
Stock: Y

Engineering Data

RPM	85/71	Volts	230/460	Volts	
HP/KW	.33/.33	F.L. Amps	2/1	F.L. Amps	1.6/.8
Frame	42Y	S. F Amps		S. F Amps	
Max Amb	40	Hertz		Phase	3
Insul Class	F4	Duty	CONT	TYPE	TF
		Serv. Factor	1.0/1.0	PF	
Eff 100%		Eff 75%		Enclosure	TEFC
Protection	NOT	Therm.Prot.		Bearing OPE	6201-13
Design		Code	L	Bearing PE	6203
UL	Yes	CSA	Yes	CE	No
Series	PE350	Nameplate	080573	Lubrication	
		Overrlung Ld.	300	Shaft Type	PARALLEL

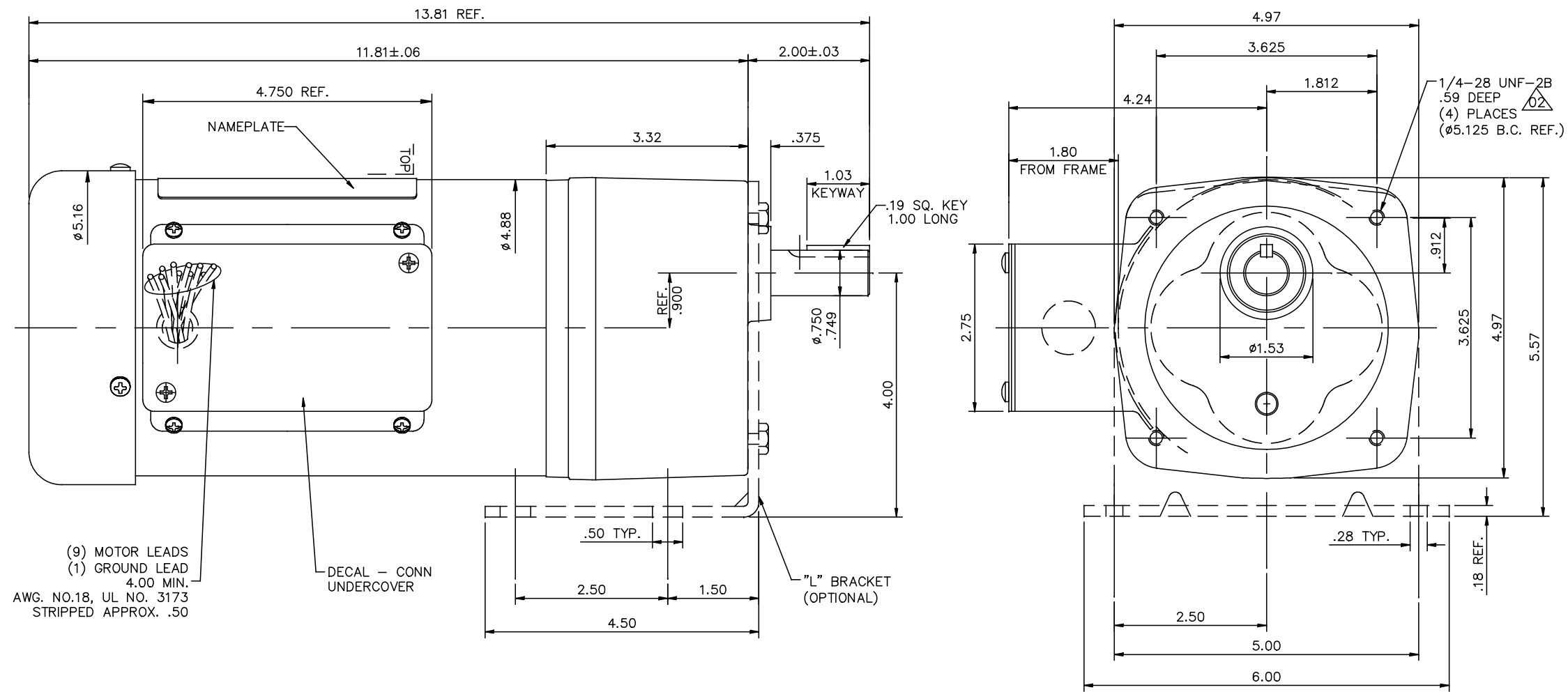
Motor Wt.	30 LB	Mounting	SPECIAL	Rotation	RECONN
Carton Label	Leeson GearMotor	Assembly			
Winding	T47413	Shaft Dia.	3/4	Ext. Diag2.	
GROUP :	3 C	Paint	M1305027.01	Packaging	B
Test Card	02	Outline	027696-096014	Cust Part No	

Form Factor			RMS Amps	
Torque		RMS Amps		
AB Code		Peak		
Resistance		Peak@DegC		
Connection			Const Torque	

Rework Status Rework TYPE

4Explosion Proof			2Brake Motors
Temp Op Code			FORCE
Class	GROUP		VDC
Class	GROUP		ADC

027696



CATALOG NUMBER	OUTPUT RPM	FULL LOAD TORQUE LB.-IN.	INPUT HP	OVERHUNG LOAD LBS.	RATIO TO 1
096013.00	58	320	1/3	300	30
096014.00	85	218	1/3	300	20
096015.00	173	109	1/3	300	10
096016.00	345	55	1/3	300	5

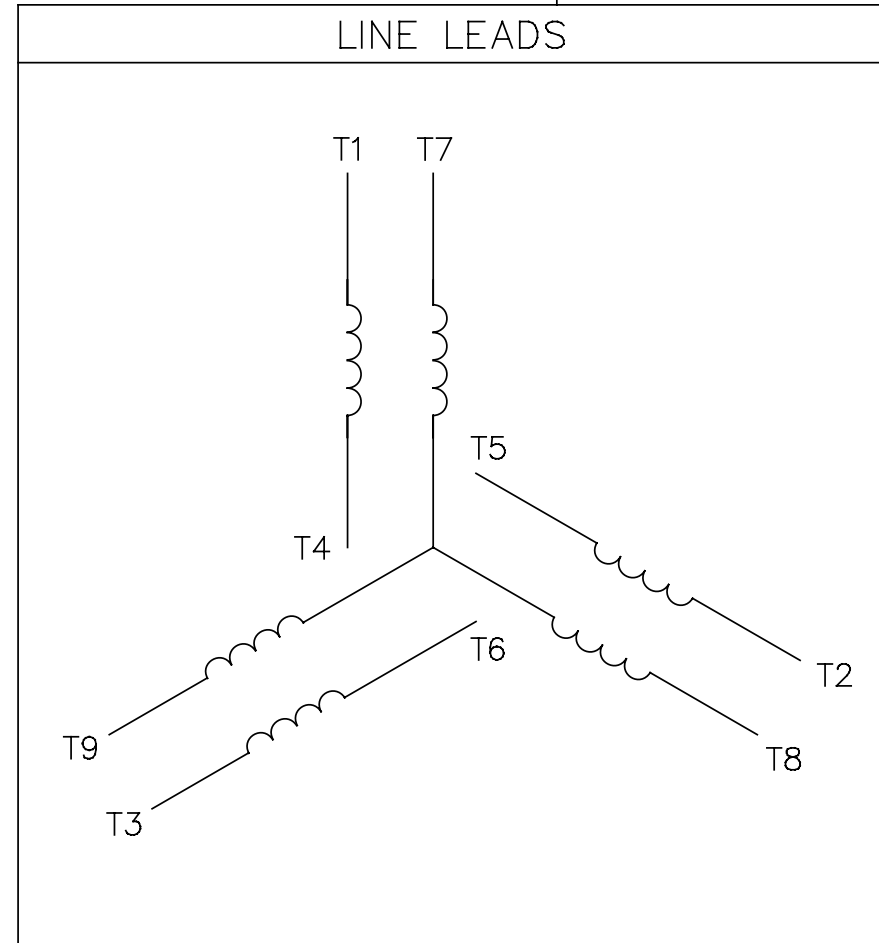
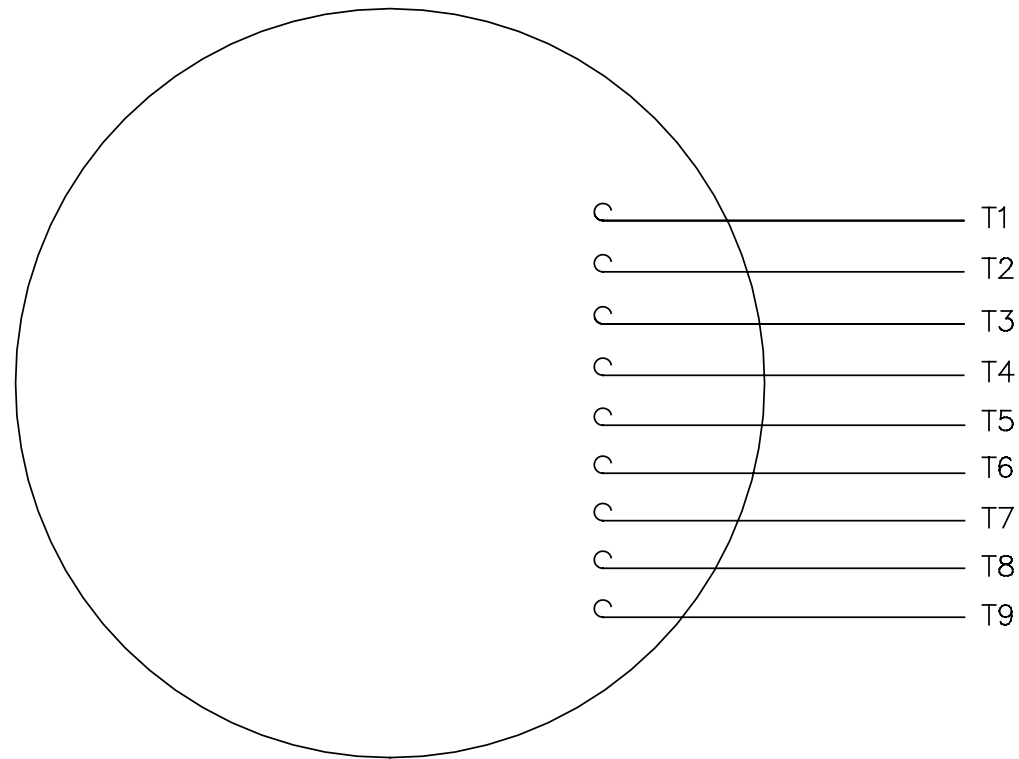
NOTE: WHEN USING MOUNTING BRACKET OHL MUST NOT EXCEED 200 LBS.

TOLERANCES UNLESS SPECIFIED		DEC.		INCHES		LEESON ELECTRIC MOTORS GEARMOTORS AND DRIVES		DRAWN DWF 9/16/97	
.X	±.1					ELECTRIC MOTORS GEARMOTORS AND DRIVES		CHK DWF 9/25/97	
.XX	±.03					TITLE		SCALE 5=8	
.XXX	±.005					OUTLINE - 42 FRAME PE350 STOCK		REF 027689	
.XXXX	±.0005					MAT'L		FMF 096013	
NO.	REVISION	BY & DATE		CHK	ANG	FINISH	LEESON STOCK	PREV	
THIS DRAWING IN DESIGN AND DETAIL IS OUR PROPERTY AND MUST NOT BE USED EXCEPT IN CONNECTION WITH OUR WORK ALL RIGHTS OF DESIGN AND INVENTION ARE RESERVED THIS IS AN ELECTRONICALLY GENERATED DOCUMENT - DO NOT SCALE THIS PRINT								SIZE	DRAWING NO.
								B	027696
								DIST	REV.
									02

Uncontrolled Copy

005010-01

VIEW FROM OUTSIDE OF MOTOR AT SWITCH END.



VOLTAGE	L1	L2	L3	JOIN & INSULATE
HIGH	T1	T2	T3	(T4,T7) (T5,T8) (T6,T9)
LOW	T1,T7	T2,T8	T3,T9	T4,T5,T6

		TOLERANCES UNLESS SPECIFIED		REGAL™ Regal Beloit America, Inc.		DRAWN RDW 04/12/02				
		DEC.	INCHES	TITLE		CHK				
		.X	±.1	EXTERNAL WIRING DIAGRAM		APPD				
		.XX	±.01	3 PHASE W/O PROTECTOR		SCALE 1=1				
		.XXX	±.005	MAT'L. DECAL - 004014		REF FIG.2-51				
A	UPDATED TO REGAL LOGO	SAJ	06/26/15	AJY	.XXXX	±.0005	FMF			
NO.	REVISION	BY & DATE	CHK	ANG	±1/2°	FINISH	PREV			
THIS DRAWING IN DESIGN AND DETAIL IS OUR PROPERTY AND MUST NOT BE USED EXCEPT IN CONNECTION WITH OUR WORK ALL RIGHTS OF DESIGN AND INVENTION ARE RESERVED THIS IS AN ELECTRONICALLY GENERATED DOCUMENT - DO NOT SCALE THIS PRINT				RFP	04/12/02	CAD FILE	00501001	SIZE	DRAWING NO.	REV.
				DIST	BRF-NLV			A	005010-01	A