



A Regal Brand

Catalog # : M1125131.00

Product Type: ACSG

Description:

Model: M1125131.00

Stock: Y

Engineering Data

RPM	94	Volts		Volts	
HP/KW	.067	F.L. Amps		F.L. Amps	.9
Frame	31	S. F Amps		S. F Amps	
Max Amb	40	Hertz		Phase	1
Insul Class	F4	Duty	CONT	TYPE	PF
		Serv. Factor	1.0	PF	
Eff 100%		Eff 75%		Enclosure	TEFC
Protection	NOT	Therm.Prot.		Bearing OPE	6000
Design		Code	C	Bearing PE	6000
UL	Yes	CSA	Yes	CE	Yes
		Nameplate	M1004149.02	Lubrication	
Series	PZ	Overrlung Ld.	171	Shaft Type	PARALLEL

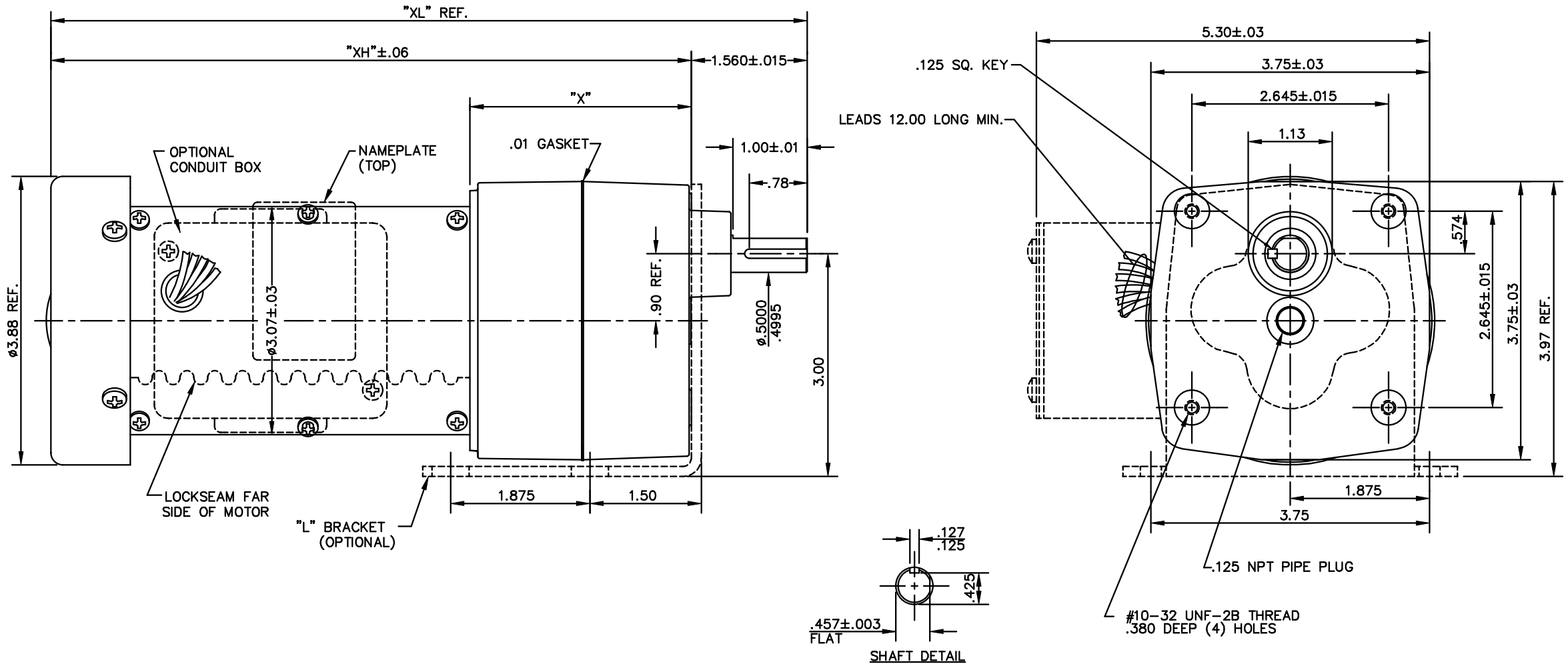
Motor Wt.	10 LB	Mounting	SPECIAL	Rotation	RECONN
Carton Label	Subfrac Individual	Assembly	M1040689		
Winding	MP3141	Shaft Dia.	1/2	Ext. Diag2.	
GROUP :	1 XG	Paint	M1305027.01	Packaging	M1307027.01
Test Card	03	Outline	M1030607	Cust Part No	

Form Factor		RMS Amps	
Torque		Peak	
AB Code		Peak@DegC	
Resistance			
Connection		Const Torque	

Rework Status                      Rework TYPE

4Explosion Proof		2Brake Motors
Temp Op Code		FORCE
Class	GROUP	VDC
Class	GROUP	ADC

M1030607



- NOTES:**  
 1- ALL GEARING IS STEEL IN COMPOSITION.  
 2- GEARING IS OF AGMA #8 QUALITY OR BETTER.

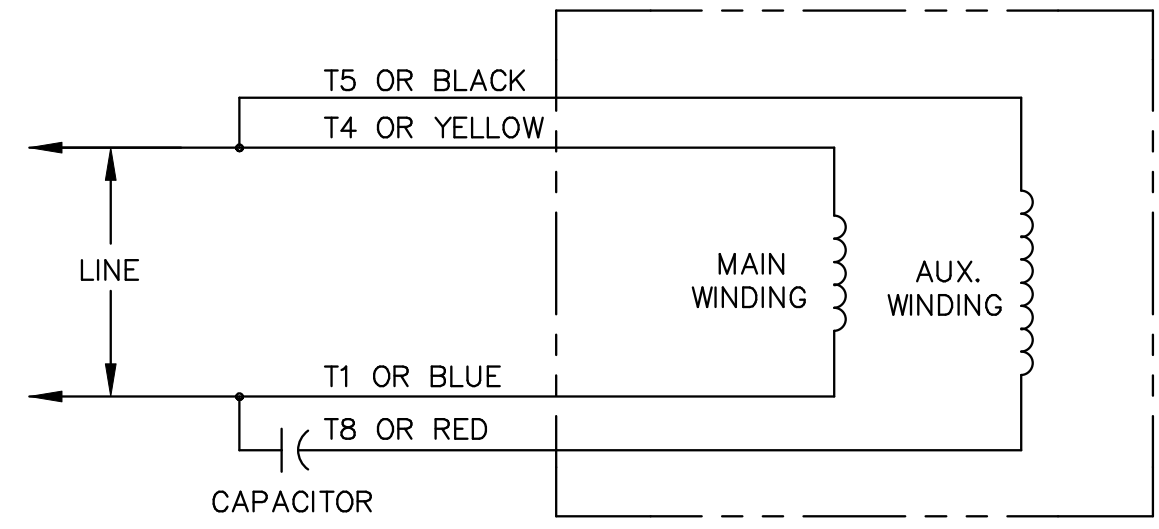
CAT. NO.	HP	RATIO NOMINAL	SAFE TORQUE LB.-IN	RPM OUT-PUT	"XL" DIM.	"X" DIM.	"XH" DIM.
M1125127.00	1/15	180:1	100	9.4	10.42	3.23	8.86
M1125128.00	1/15	90:1	100	19	10.42	3.23	8.86
M1125129.00	1/15	60:1	100	28	9.62	2.43	8.06
M1125130.00	1/15	30:1	56	57	9.62	2.43	8.06
M1125131.00	1/15	18:1	34	94	9.62	2.43	8.06
M1125132.00	1/15	12:1	24	142	9.32	2.13	7.76
M1125133.00	1/15	6:1	12	283	9.32	2.13	7.76

NO.	REVISION	BY & DATE	CHK	ANG	TOLERANCES UNLESS SPECIFIED	FINISH	SIZE	DRAWING NO.	REV.
05	ADDED (TOP) TO NAMEPLATE NOTE, FOR CLARITY	BJB 03/08/05			DEC. INCHES		B	M1030607	05
04	REVISED CONDUIT BOX MOUNTING HOLE LOCATION	BJB 08/19/02	RDW	X	±.1				
03	ROTATED FLAT 180° ON SHAFT PER ECR 79989	RLW 07/23/02			.XX ±.03				
02	CORRECTED "X", "XH", AND "XL" DIMENSIONS	SAD 03/15/00	SPV		.XXX ±.005				
01	CORRECTED PRINT TO PICTORIAL MATCH MOTOR	SAD 02/09/98			.XXXX ±.0005				
THIS DRAWING IN DESIGN AND DETAIL IS OUR PROPERTY AND MUST NOT BE USED EXCEPT IN CONNECTION WITH OUR WORK ALL RIGHTS OF DESIGN AND INVENTION ARE RESERVED THIS IS AN ELECTRONICALLY GENERATED DOCUMENT - DO NOT SCALE THIS PRINT		RFP		CAD FILE		M1030607		DRAWING NO. M1030607	
		DIST							

**LEESON** ELECTRIC MOTORS  
GEARMOTORS  
AND DRIVES

TITLE: 31 FRAME A.C. PZ GEARBOX  
 SCALE: 3=4  
 REF: M1030348.00  
 FMF: M1125050.00  
 DRAWN: SPV 10/09/97  
 CHK: APPD  
 LEESON STOCK

M1005089.01



CONNECTIONS SHOWN FOR CCW ROTATION FACING LEAD END.  
TO REVERSE ROTATION INTERCHANGE T4(YELLOW) AND T1(BLUE) LEADS

				TOLERANCES UNLESS OTHERWISE SPECIFIED		<b>LEESON</b> ELECTRIC CORPORATION	
				DECIMALS			
				.00	± .01	DRAWN SJB 12/21/89	TITLE
02	ADDED T1 AND T4 TO REVERSE INSTUCTIONS	DWD	4/7/97	.000	± .005	CH'K'D.	EXTERNAL WIRING DIAGRAM
01	REDRAWN ON CAD	RJB	PTZ 11/16/92	.0000	± .0005	APPR.	MAT'L "P" TYPE W/O PROTECTOR
NO.	REVISION	BY	DATE	FRACTIONS	± 1/64	SCALE 1=1	DUAL ROT., ROT. BASED ON ODD # GEAR STAGE
THIS DRAWING IN DESIGN AND DETAIL IS OUR PROPERTY AND MUST NOT BE USED EXCEPT IN CONNECTION WITH OUR WORK ALL RIGHTS OF DESIGN AND INVENTION ARE RESERVED				ANGLES	± 1/2'	REF.	FINISH
				INCH/MM		FMF	SIZE A