



A Regal Brand

Catalog # : M1145130.00

Product Type: ACSG

Description:

Model: M1145130.00

Stock: Y

Engineering Data

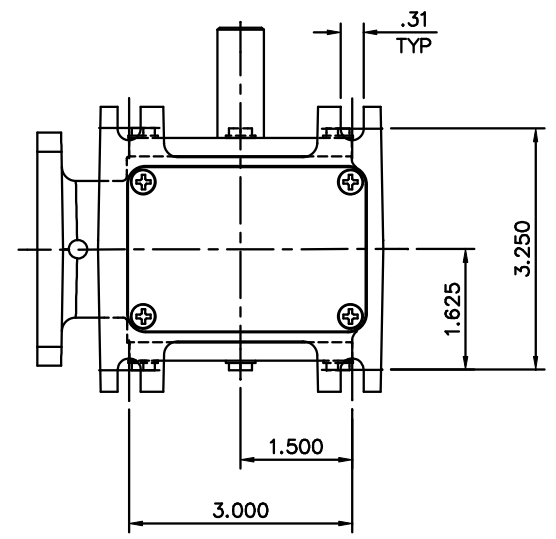
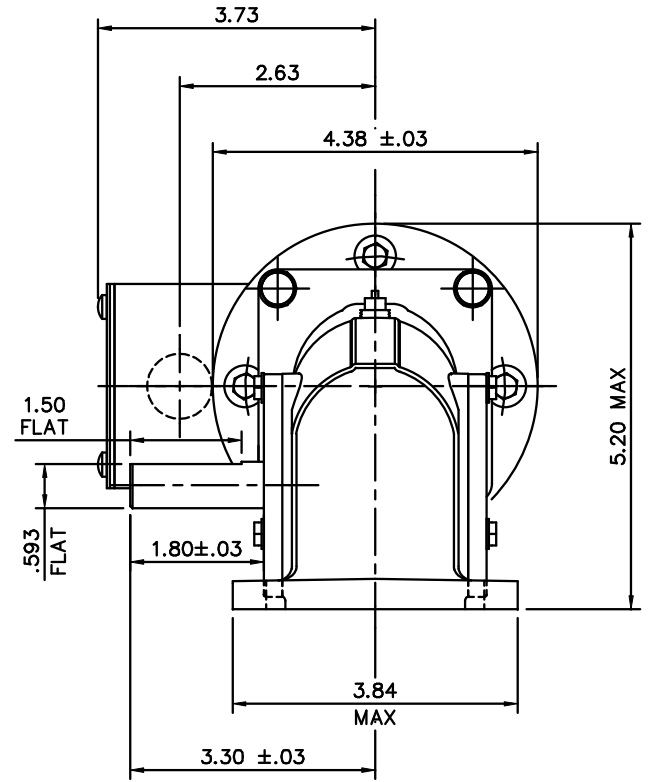
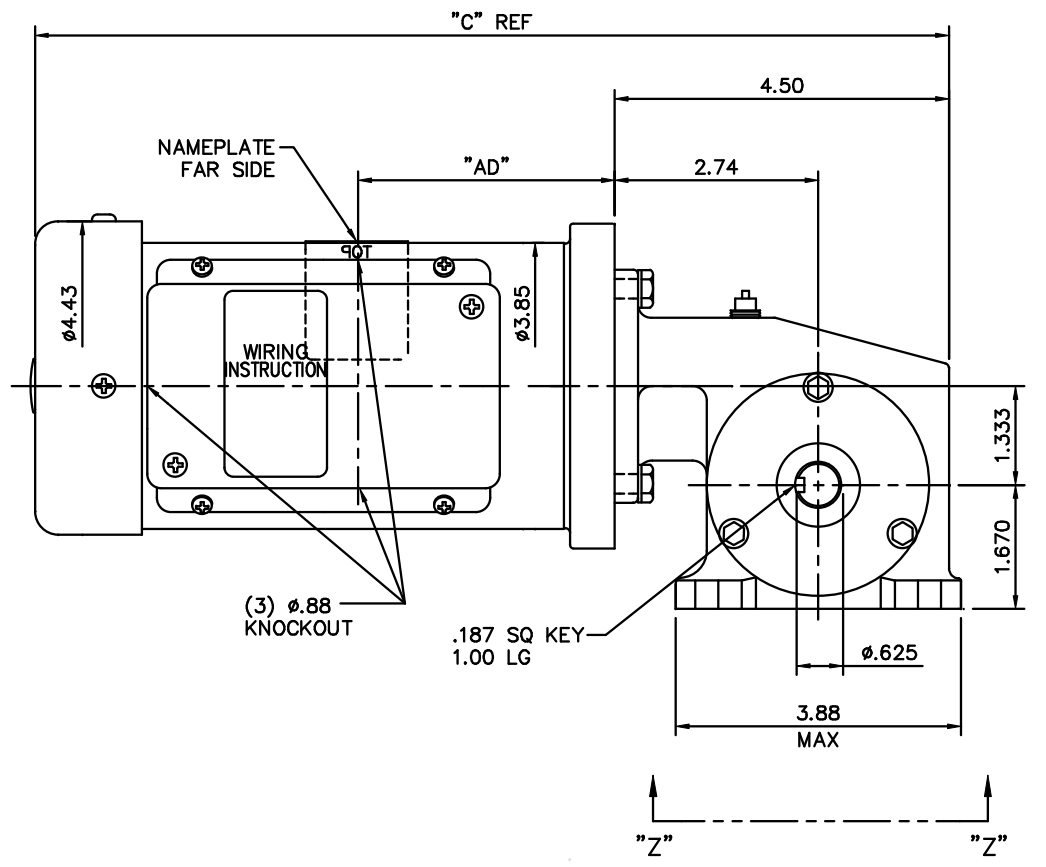
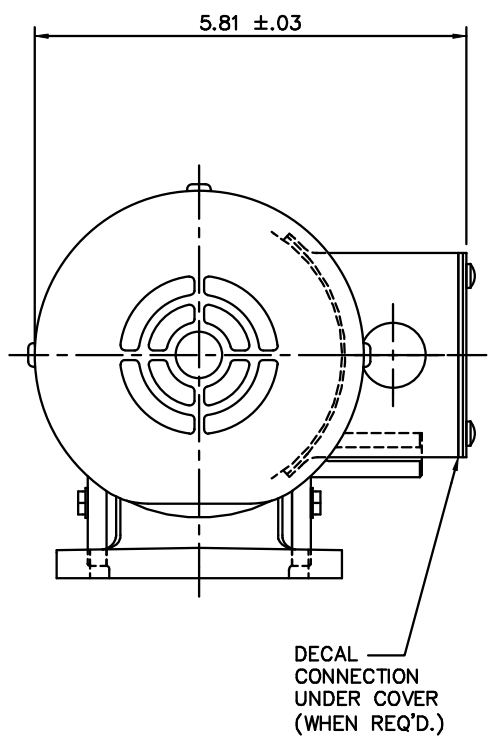
| | | | | | |
|-------------|-----------|---------------|---------|-------------|-------------|
| RPM | 172/143 | Volts | 190 | Volts | |
| HP/KW | .375/.375 | F.L. Amps | 1.6 | F.L. Amps | 1.4-1.3 |
| Frame | 38 | S. F Amps | | S. F Amps | |
| Max Amb | 40 | Hertz | | Phase | 3 |
| Insul Class | F4 | Duty | CONT | TYPE | TF |
| | | Serv. Factor | 1.0/1.0 | PF | |
| Eff 100% | | Eff 75% | | Enclosure | TEFC |
| Protection | NOT | Therm.Prot. | | Bearing OPE | 6201-13 |
| Design | | Code | G | Bearing PE | 6201-13 |
| UL | Yes | CSA | Yes | CE | No |
| Series | 13 | Nameplate | 081188 | Lubrication | |
| | | Overrlung Ld. | 235 | Shaft Type | RIGHT-ANGLE |

| | | | | | |
|--------------|--------------------|------------|-------------|--------------|-------------|
| Motor Wt. | 18 LB | Mounting | SPECIAL | Rotation | RECONN |
| Carton Label | Subfrac Individual | Assembly | M1040956 | | |
| Winding | MT38432 | Shaft Dia. | 5/8 | Ext. Diag2. | |
| GROUP : | 1 G | Paint | M1305027.01 | Packaging | M1307027.01 |
| Test Card | 05 | Outline | M1030994 | Cust Part No | |

| | | | |
|-------------|--|--------------|--|
| Form Factor | | RMS Amps | |
| Torque | | Peak | |
| AB Code | | Peak@DegC | |
| Resistance | | | |
| Connection | | Const Torque | |

Rework Status Rework TYPE

| | | |
|------------------|-------|---------------|
| 4Explosion Proof | | 2Brake Motors |
| Temp Op Code | | FORCE |
| Class | GROUP | VDC |
| Class | GROUP | ADC |



VIEW Z-Z

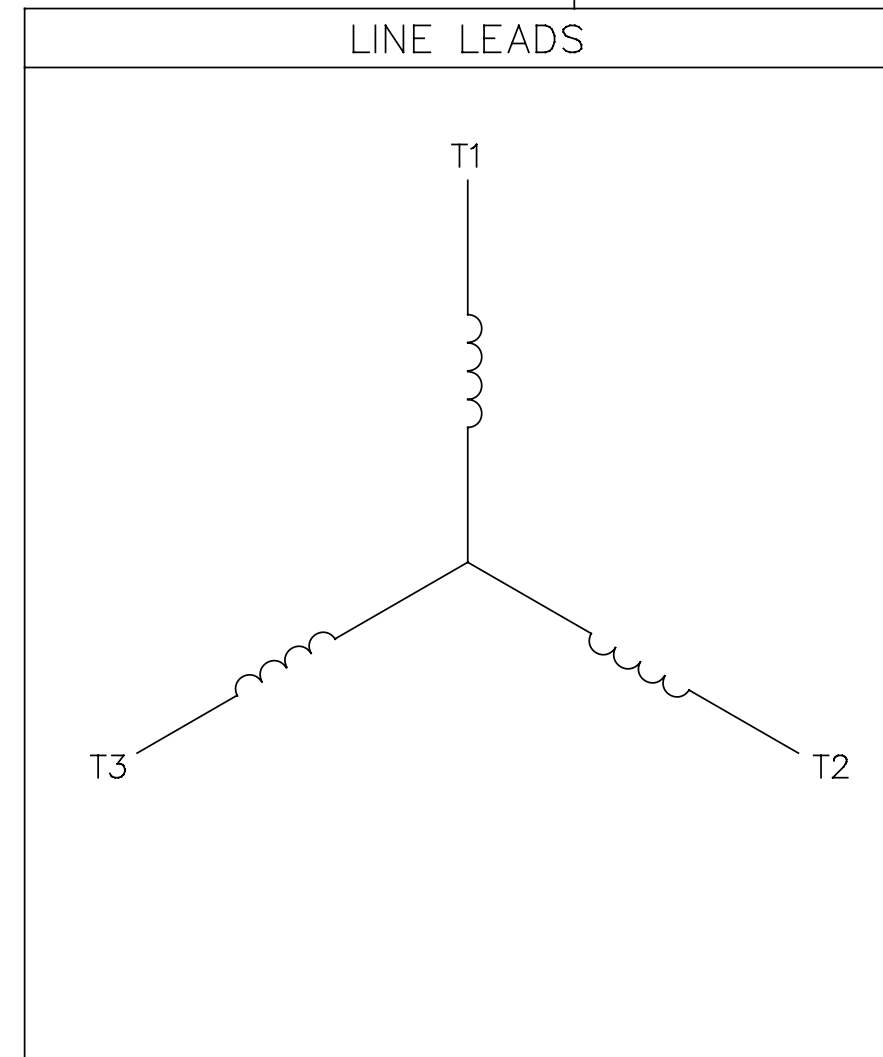
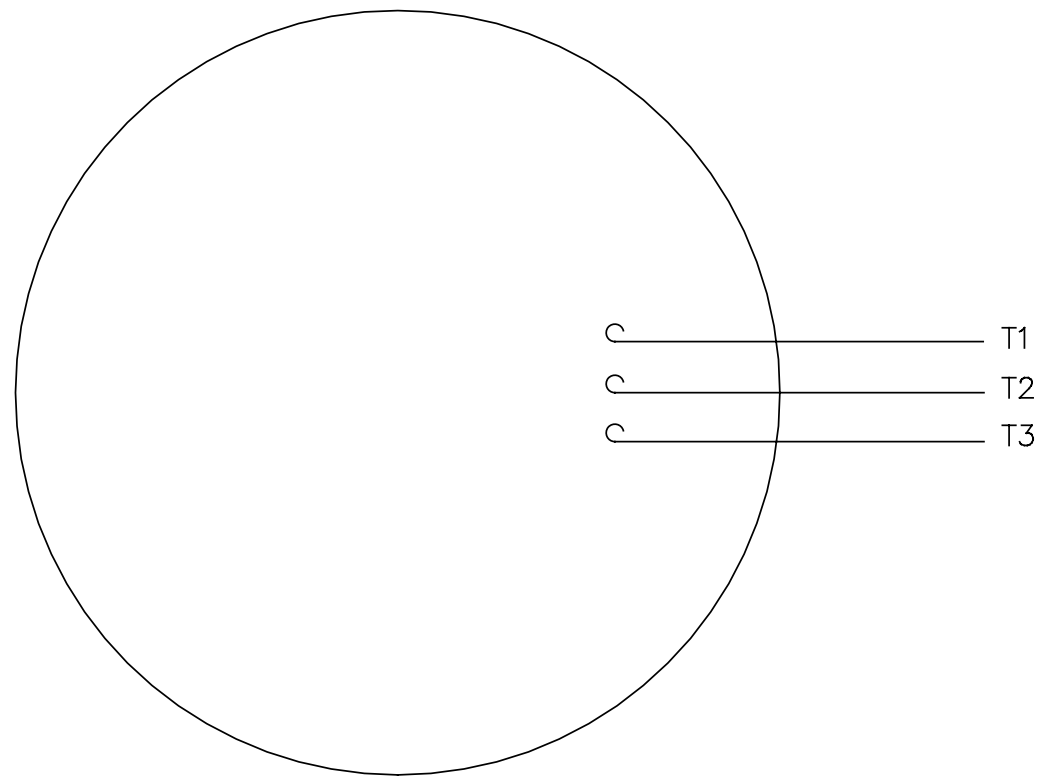
| CATALOG NUMBER | OUTPUT RPM | FULL LOAD TORQUE LB.-IN. | INPUT HP | OVERHUNG LOAD LBS. | RATIO TO 1 | "C" | "AD" |
|----------------|------------|--------------------------|----------|--------------------|------------|-------|------|
| M1145127.00 | 29 | 220 | 3/8 | 235 | 60 | 12.31 | 3.50 |
| M1145128.00 | 43 | 228 | 3/8 | 235 | 40 | 12.31 | 3.50 |
| M1145129.00 | 86 | 138 | 3/8 | 235 | 20 | 12.31 | 3.50 |
| M1145130.00 | 172 | 105 | 3/8 | 235 | 10 | 12.31 | 3.50 |
| M1145131.00 | 345 | 54 | 3/8 | 235 | 05 | 12.31 | 3.50 |
| M1145136.00 | 345 | 23 | 3/8 | 235 | 05 | 11.81 | 2.50 |

| | | | | | | | | | |
|--|--|-----------------------------|---------|--|---|----------|-------------|-------------|------|
| | | TOLERANCES UNLESS SPECIFIED | | LEESON | ELECTRIC MOTORS GEARMOTORS AND DRIVES | DRAWN | LST 5/16/05 | | |
| | | DEC. | INCHES | | | CHK | RW 6/1/05 | | |
| | | .X | ±.1 | TITLE 38 FRAME A.C. RIGHT ANGLE GEARMOTOR | | APPD | KH 6/1/05 | | |
| | | .XX | ±.03 | | | SCALE | 1=2 | | |
| 02 | CHANGED TO DIE CAST GEARBOX PER ECN 06-3024. | RPB | 7/13/06 | BC | .XXX | ±.005 | REF | PR040180 | |
| 01 | ADDED PERFORMANCE ATTRIBUTES TABLE | RLW | 7/7/05 | | .XXXX | ±.0005 | MAT'L | FMF | |
| NO. | REVISION | BY & DATE | CHK | ANG | ±1/2' | FINISH | PREV | | |
| THIS DRAWING IN DESIGN AND DETAIL IS OUR PROPERTY AND MUST NOT BE USED EXCEPT IN CONNECTION WITH OUR WORK ALL RIGHTS OF DESIGN AND INVENTION ARE RESERVED THIS IS AN ELECTRONICALLY GENERATED DOCUMENT - DO NOT SCALE THIS PRINT | | | | RFP | CAD FILE | M1030994 | SIZE | DRAWING NO. | REV. |
| | | | | DIST | | | B | M1030994 | 02 |

Uncontrolled Copy

005102-01

VIEW FROM OUTSIDE OF MOTOR AT SWITCH END.



CONNECT LEADS AS FOLLOWS
FOR FOUR CONDUCTOR CORD ()

| | | | | |
|-------|-------------|---------------|---------------|---------|
| CORD | L1 (RED) | L2 (WHITE) | L3 (BLACK) | (GREEN) |
| MOTOR | T1 | T2 | T3 | GROUND |

| | | | | | | | |
|--|------------------------------------|--------------|------|--------------------------------|-----------------------|-------------------------------|---------|
| | | | | TOLERANCES UNLESS SPECIFIED | | DRAWN JRW 9/11/75 | |
| | | | | DEC. | INCHES | CHK | |
| | | | | .X | ±.1 | APPD JCW 9/11/75 | |
| 08 | UPDATED TO REGAL LOGO | SAJ 06/26/15 | AJY | .XX | ±.01 | TITLE EXTERNAL WIRING DIAGRAM | |
| 07 | UPDATED TO CURRENT STANDARDS | DBT 5/30/97 | | .XXX | ±.005 | TYPE "T" W/O PROTECTOR | |
| 06 | REDRAWN ON CAD; ADDED DECAL NUMBER | SAW 1/24/95 | | .XXXX | ±.0005 | MAT'L. DECAL - 004169 | |
| NO. | REVISION | BY & DATE | CHK | ANG | ±1/2" | FINISH | |
| THIS DRAWING IN DESIGN AND DETAIL IS OUR PROPERTY AND MUST NOT BE USED EXCEPT IN CONNECTION WITH OUR WORK ALL RIGHTS OF DESIGN AND INVENTION ARE RESERVED THIS IS AN ELECTRONICALLY GENERATED DOCUMENT - DO NOT SCALE THIS PRINT | | | RFP | 5/1/02 | CAD FILE | 00510201 | SIZE A |
| | | | DIST | BRF-NLV | DRAWING NO. 005102-01 | | REV. 08 |

