



A Regal Brand

Catalog # : 096008.00
Product Type: ACSG
Description:

Model: 096008.00
Stock: Y

Quote: Price:

Date: 02/08/2018



A Regal Brand

Catalog # : 096008.00
Product Type: ACSG
Description:

Model: 096008.00
Stock: Y

Engineering Data

RPM	75/62	Volts	110/220	Volts	
HP/KW	.16/.16	F.L. Amps	4/2	F.L. Amps	2.9/1.45
Frame	P42Y	S. F Amps		S. F Amps	
Max Amb	40	Hertz		Phase	1
Insul Class	F4	Duty	CONT	TYPE	PF
		Serv. Factor	1.0/1.0	PF	
Eff 100%		Eff 75%		Enclosure	TEFC
Protection	NOT	Therm.Prot.		Bearing OPE	6201-13
Design		Code	H	Bearing PE	6203
UL	Yes	CSA	Yes	CE	No
Series	PE350	Nameplate	080573	Lubrication	
		Overrlung Ld.	256	Shaft Type	PARALLEL

Motor Wt.	29 LB	Mounting	SPECIAL	Rotation	RECONN
Carton Label	Leeson GearMotor	Assembly			
Winding	P47410	Shaft Dia.	3/4	Ext. Diag2.	
GROUP :	3 E	Paint	M1305027.01	Packaging	B
Test Card	01	Outline	027689-096008	Cust Part No	

Form Factor		RMS Amps	
Torque		Peak	
AB Code		Peak@DegC	
Resistance			
Connection		Const Torque	

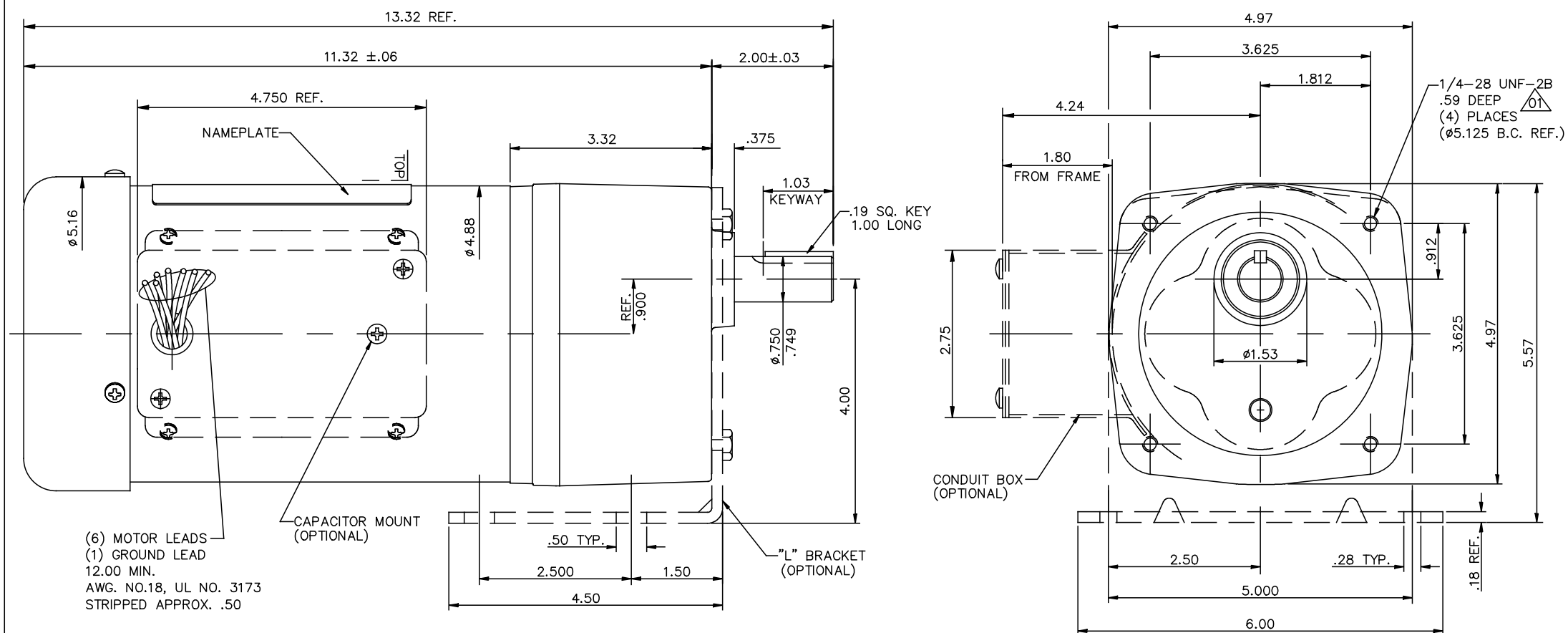
Rework Status Rework TYPE

4Explosion Proof		2Brake Motors
Temp Op Code		FORCE
Class	GROUP	VDC
Class	GROUP	ADC

Quote: Price:

Date: 02/08/2018

027689

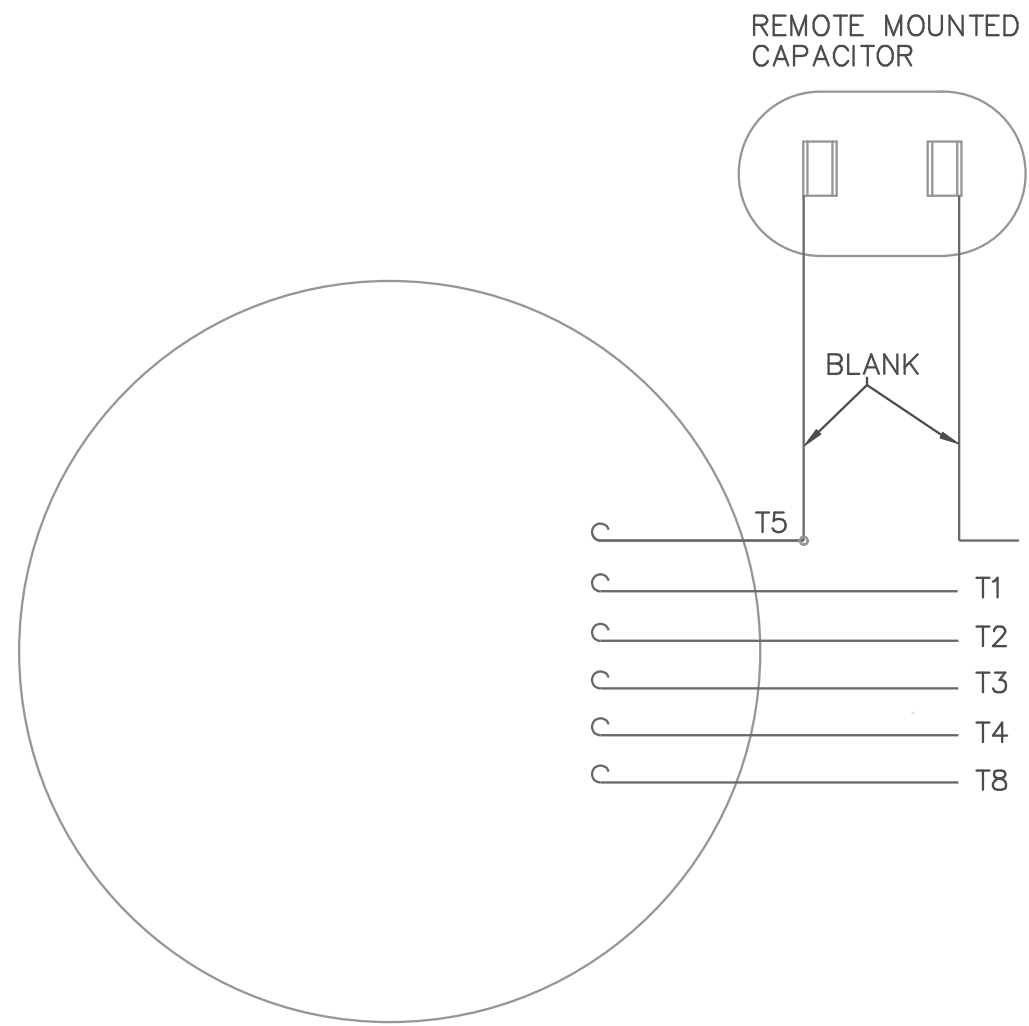


CATALOG NUMBER	OUTPUT RPM	FULL LOAD TORQUE LB.-IN.	INPUT HP	OVERHUNG LOAD LBS.	RATIO TO 1
096004.00	29	270	1/6	327	58
096005.00	34	250	1/6	330	50
096006.00	40	180	1/6	303	43
096007.00	59	135	1/6	267	29
096008.00	75	90	1/6	256	23
096009.00	113	68	1/6	222	15
096010.00	160	45	1/6	196	10
096011.00	340	25	1/6	190	5

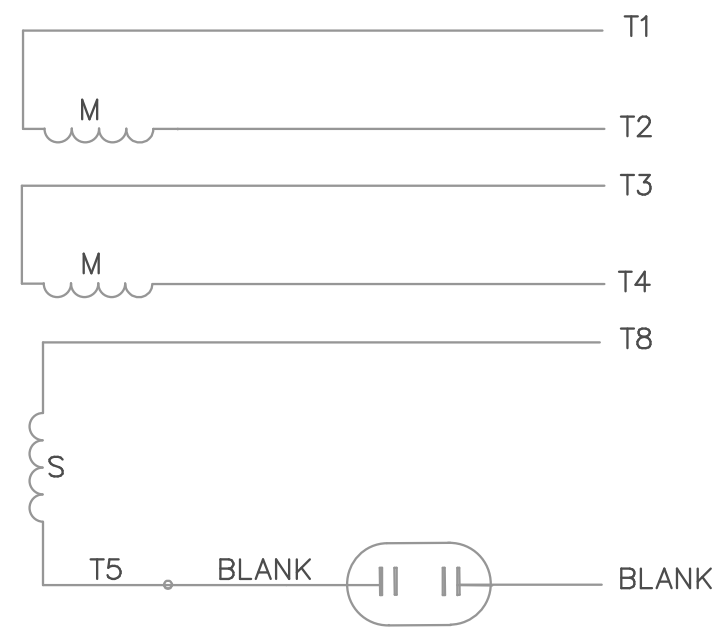
				TOLERANCES UNLESS OTHERWISE SPECIFIED		LEESON ELECTRIC CORPORATION	
				DECIMALS			
				.00	± .01	DRAWN DWF 7/14/97	TITLE
				.000	± .005	CH'K'D.	OUTLINE DRAWING
01	THREAD DEPTH WAS .63"	JD	06/06/17	.0000	± .0005	APPR.	42 FRAME PE350 STOCK
NO.	REVISION	BY	DATE	FRACTIONS	± 1/64	SCALE	MAT'L.
				ANGLES	± 1/2'	REF. PR970359	FINISH LEESON
THIS DRAWING IN DESIGN AND DETAIL IS OUR PROPERTY AND MUST NOT BE USED EXCEPT IN CONNECTION WITH OUR WORK ALL RIGHTS OF DESIGN AND INVENTION ARE RESERVED				INCH/MM		FMF 092141.00	SIZE B
							STOCK

005108-05

VIEW FROM OUTSIDE OF MOTOR AT LEAD END.

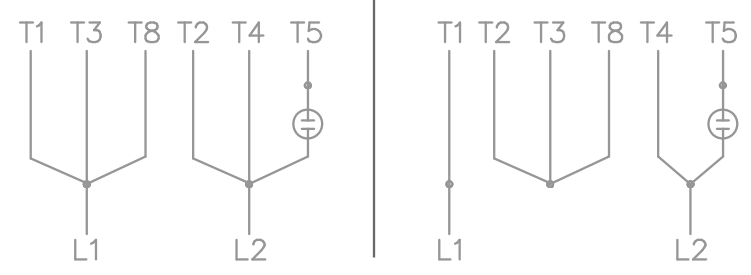


LINE LEADS



LOW VOLTAGE

HIGH VOLTAGE



2 STAGE:
C.C.W. ROTATION FACING LEAD END AS SHOWN
INTERCHANGE LEADS T5 & T8 FOR C.W.
3 STAGE:
CW ROTATION FACING LEAD END AS SHOWN
INTERCHANGE LEADS T5 & T8 FOR CCW

				TOLERANCES UNLESS OTHERWISE SPECIFIED		LEESON ELECTRIC CORPORATION			
				DECIMALS					
				.00	± .01	DRAWN DBT 07/21/97	TITLE EXTERNAL WIRING DIAGRAM		
				.000	± .005	CH'K'D.	TYPE "P" W/O PROTECTOR		
				.0000	± .0005	APPR.	MAT'L. TAG - 080689.02 - 2 STAGE		
NO.	REVISION	BY	DATE	FRACTIONS	± 1/64	SCALE 1=1	TAG - 080689.01 - 3 STAGE		
THIS DRAWING IN DESIGN AND DETAIL IS OUR PROPERTY AND MUST NOT BE USED EXCEPT IN CONNECTION WITH OUR WORK ALL RIGHTS OF DESIGN AND INVENTION ARE RESERVED				ANGLES	± 1/2°	REF. 005018-01	FINISH LEESON	SIZE A	DRAWING NO.
				INCH/MM		FMF	GEARMOTORS		005108-05