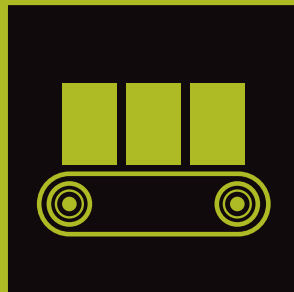
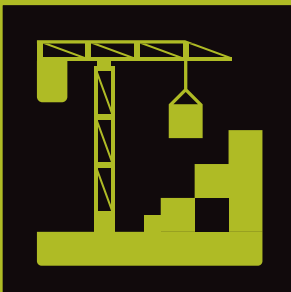


# RM SERIES BUILT TOUGH TO DO BUSINESS BETTER



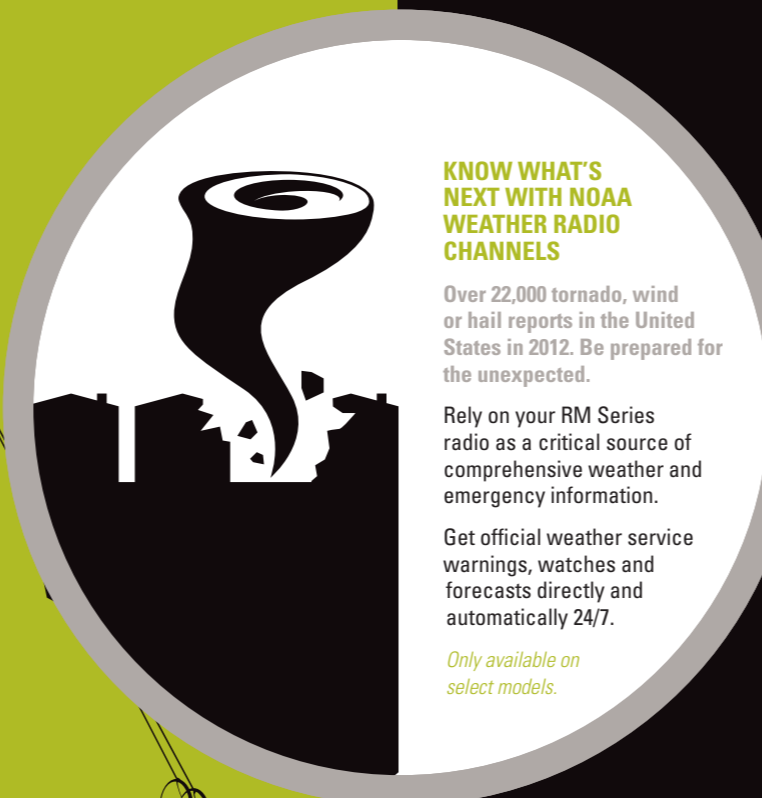
**ON-SITE TWO-WAY BUSINESS RADIOS  
AND ACCESSORIES**



# WORK TOGETHER BETTER WITH A FASTER WAY TO COMMUNICATE

You need to communicate quickly without missing a beat – whether you’re coordinating resources at the construction site or monitoring resources on the manufacturing line. The RM Series two-way radios have the business smarts to help your teams work better together.

These fully-featured portables combine outstanding quality with excellent affordability to give your operation the competitive edge. With crisp, clear audio throughout the workplace and exceptional durability, the RM Series radios won’t quit in high noise, harsh conditions and hard use.



## KNOW WHAT'S NEXT WITH NOAA WEATHER RADIO CHANNELS

Over 22,000 tornado, wind or hail reports in the United States in 2012. Be prepared for the unexpected.

Rely on your RM Series radio as a critical source of comprehensive weather and emergency information.

Get official weather service warnings, watches and forecasts directly and automatically 24/7.

*Only available on select models.*

# ALL THE RIGHT PROFESSIONAL CREDENTIALS

FEATURE:	FUNCTION:
EXCEPTIONALLY CLEAR AUDIO	Powerful speaker delivers premium-quality audio for clear communications in noisy conditions.
CONTINUOUS COVERAGE*	Communicate confidently in a workplace up to 250,000 sq. ft. or 20 floors (UHF).
ERGONOMIC DESIGN	Comfortable to wear all-day, with easy-to-use interface that requires little or no training.
DURABLE, WATER-RESISTANT	Takes on tough conditions with a durable metal diecast chassis that meets Military Standards and IP54/55 specs.
ANTIMICROBIAL PROTECTION**	Helps prevent the growth of mold and germs on the surface of the radio.
TRI-COLOR LED	Easily identify different radio features and radio status with the bright tri-color LED.
CHANNELS	To talk with different workgroups quickly, change channels at the touch of a button or with the channel selector knob (available on select models).
CHANNEL ALIAS	Assign each channel a user defined name (Available on RMU2080d model). For non-display models, use channel announcement to confirm which channel you are on.
ADVANCED VOICE ACTIVATION (VOX)	Enjoy the convenience of hands-free operation with our optional accessories.
CONVENIENT CHARGING	Drop-in charger keeps radios charged, ready and centrally located. LED light on multi-unit charger provides a charge status to give you confidence you're heading out with a fully-charged radio.
EASY TO PROGRAM***	HTML-based Customer Programming Software works with any computer web browser. Profiles interchange with RDX Series.
VOICE PROMPTS	Program RM Series non-display radios on the go. Confirm the changes even without a radio display so you continue working without distraction.
EASY CLONING	Quickly copy settings between RM Series or RM and RDX Series radios with the radio-to-radio cloning cable or multi-unit charger accessories.
NARROWBAND COMPLIANT	Meets the FCC narrowbanding mandate to operate in 12.5 kHz efficiency.
BUSINESS-EXCLUSIVE FREQUENCIES	Operates on 89 UHF or 27 VHF business-exclusive frequencies with 122 codes, same as the RDX series radios. Has national licensing capability.
SEAMLESS RDX SERIES TRANSITION	RM series radios are compatible with all narrowband RDX series radios. They share the same frequencies and programming profiles are interchangeable.

\* Coverage will vary based on terrain, conditions and the radio model used.

\*\* Does not apply to accessories.

\*\*\* CPS is available as a free download. Compatible with Windows® XP, Vista and 7. Separate USB cable required.

## IMPORTANT FEATURES HELP YOUR WORKFORCE

### REACT QUICKLY

National Oceanic and Atmospheric Administration (NOAA) dedicated weather radio channels help you prepare and secure your people – from notifying workers at the job site to mobilizing students at school. Dedicate a channel to monitoring weather and be automatically notified when there is an alert.

### INTERACT EASILY

Customized channel announcements tell you which channel you're on when you change it. So you can concentrate on serving customers, not removing the radio from a belt to see the channel. Designate 16 pre-recorded channel names that fit your departments, such as customer service, security, maintenance and more.

The carry holster with a swivel clip lets you rotate the RM Series radio into a comfortable position. Move freely as you bend to pick up a tool or reach to restock a shelf.

### CONNECT CONVENIENTLY

Put the RM Series radios in voice-activated (VOX) mode (with or without an audio accessory) and converse hands-free without physically pressing the push-to-talk (PTT). Now you can multi-task, check in a guest and call customer service to assist at the front desk.

An antimicrobial coating helps prevent the growth of mold and germs on the surface of the radio. As workers change shifts, they can pass on portables confidently.

## CHOOSE THE RIGHT RM SERIES RADIO TO MEET YOUR BUSINESS NEEDS



RMU2080d - UHF  
2 watts / 8 channels



RMU2080 - UHF  
RMV2080 - VHF  
2 watts / 8 channels



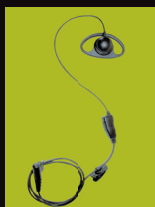
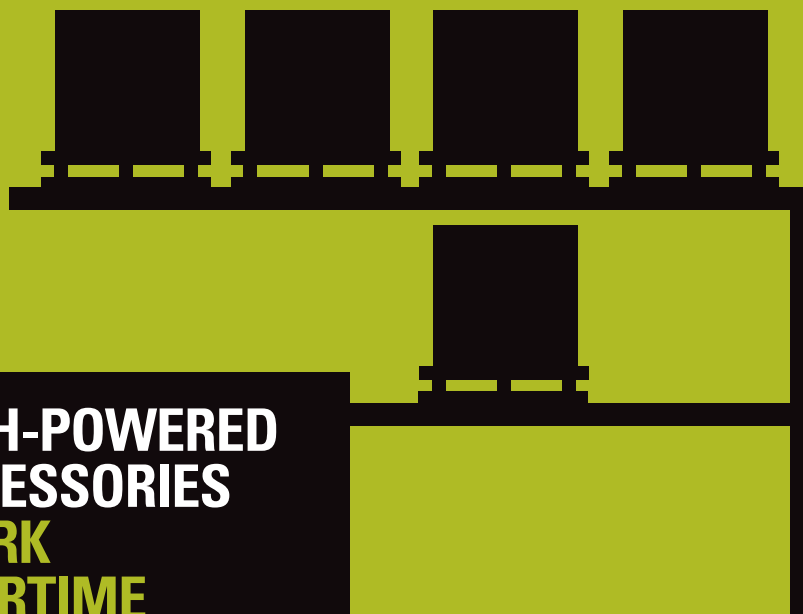
RMU2040 - UHF / RMM2050 - VHF  
2 watts / 4 channels  
RMM2050  
2 watts / 5 channels

# TESTED TO LAST IN TOUGH CONDITIONS

Military Standard 810 C, D, E, F plus G and IP54/55 may be the standards for other radio manufacturers, but they are the starting point for our RM Series. These radios undergo Motorola's unique Accelerated Life Testing (ALT). This rigorous laboratory testing simulates up to 5 years of field use. We design and engineer the RM Series right the first time to minimize costly repairs and downtime.



## HIGH-POWERED ACCESSORIES WORK OVERTIME



### AUDIO SOLUTIONS

Pair the RM Series radio with an audio accessory to communicate productively. A variety of comfortable earpieces – from lightweight and unobtrusive to heavy-duty – help you hear clearest wherever it's loudest. Our innovative accessories fit your active workstyle and attire, too.



### CARRY SOLUTIONS

Have the freedom to wear the RM Series radio your way. A holster with swivel clip lets you move easily so you can wear the radio at the angle you prefer. Bend, reach or sit without the radio getting in the way.



### CONNECTIVITY SOLUTIONS

Manage your radios and your time by cloning all programming and menu settings at the touch of a button with the radio-to-radio cloning cable or clone radios in your multi-unit charger. Use the CPS programming cable to quickly connect to software to program a variety of functions.



### BATTERY AND CHARGING SOLUTIONS

Our rechargeable lithium ion batteries with battery life of up to 12 hours are lightweight and support long work days. A multi-unit charger with LED battery status light lets you charge up to six radios simultaneously. This charger is smart and speeds up charging times when there are less than 6 radios in it.

To learn more about the radio that's built tough to do business better, visit : [www.motorolasolutions.com/rmseries](http://www.motorolasolutions.com/rmseries)

Motorola Solutions, Inc. 1301 E. Algonquin Road, Schaumburg, Illinois 60196 U.S.A. [motorolasolutions.com](http://motorolasolutions.com)

MOTOROLA, MOTO, MOTOROLA SOLUTIONS and the Stylized M Logo are trademarks or registered trademarks of Motorola Trademark Holdings, LLC and are used under license. All other trademarks are the property of their respective owners. © 2013 Motorola Solutions, Inc. All rights reserved.