

EcoCart Series

Mobile Powered Workstation



Boost your Dock to Stock Metrics with the New EcoCart
www.newcastlesys.com/ecocart

EcoCart Workstations

The NEW entry-level EcoCart mobile powered workstation is designed to provide true mobility within a facility, while eliminating unnecessary movement, touches and transportation wastes. This can result in improved dock to stock cycle times in receiving and on-time shipments in your shipping areas.

This lightweight, compact unit is ideal for powering a laptop, barcode printer and scanner for 8+ hours at time. At the end of use, simply plug your cart into a standard wall outlet to recharge.

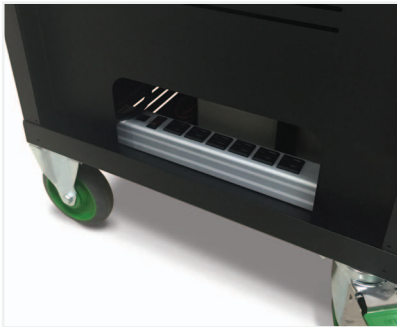
Benefits Include:

- Reduce labor by as much as \$10K per worker
- Increase receipts by as much as 60%
- Reduce improperly labeled products
- Reduce inaccurate inventories
- Process goods directly at the pallet or on the dock
- See your ROI in less than three months

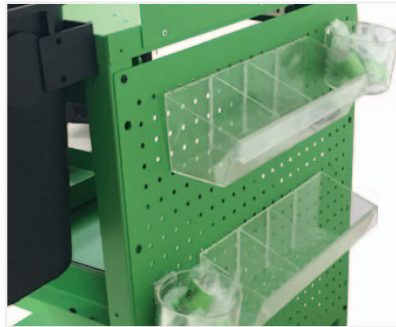
A number of optional accessories are available and can be easily integrated in seconds for a highly versatile workstation.



Shown with optional accessories



Easy-access power strip



Optional pegboard organization system (accessories not included)



Optional slide-out keyboard tray, printer tray and scanner holder

Technical Specifications

All EcoCart Series come standard with top shelf, trash can holder, trash can, 5" casters, push handles, power system and integrated power strip.

Height Adjustable:	Middle shelf adjustable from 20-32" (508-813 mm)
Shelf:	(1 standard top shelf) 21.75" wide x 20" deep metal (552 x 508 mm) (optional middle shelf) 20" wide x 20" deep metal (508 x 508 mm)
Capacity:	60 lbs (27 kg) per shelf evenly distributed
Casters:	5" (127 mm) casters, 2 fixed, 2 swivel locking
Battery: (Sealed Lead Acid)	40 or 100 AH
Status Meter:	LED display indicates the current charge in battery and confirmation of the power source
Colors:	Black powder coat
Dimensions:	21.75" wide x 20" long x 43" high (552 x 508 x 1092 mm)
Weight:	110-140 lbs (50-64 kg)
	Specifications subject to change