



4700 W. 160th St.
Cleveland, Ohio 44135
Ph: (800) 321-9532
Fax: (800) 321-9535
www.oatey.com

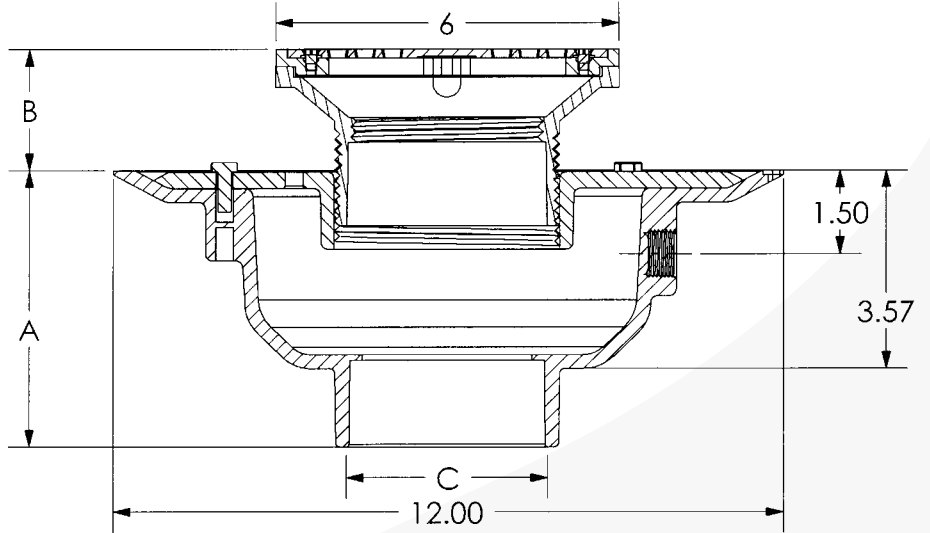
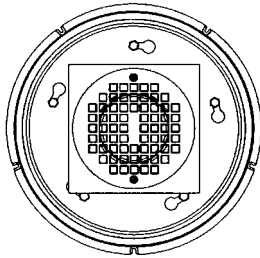
72000 Series PVC Adjustable Commercial Drain PVC Barrel With 6" Round Grate With Square Ring



SUBMITTAL SPECIFICATION

Engineering Specification: Oatey commercial grade floor drains are used for general service in restaurants, restrooms and other commercial applications where traffic is expected. Barrel assembly is completely adjustable to meet the finished floor height.

Job Reference



(All dimensions in inches)

- Barrel diameter is 3-1/2 in. IPS thread.
- Primer tap knock-out is 1/2 in. FIP thread.

✓	Socket Size (C)	Base Material	Grate Finish	Part Number
	2 in.	PVC	Brass	72142
	2 in.	PVC	Nickel	72172
	2 in.	PVC	Chrome	72202
	3 in.	PVC	Brass	72143
	3 in.	PVC	Nickel	72173
	3 in.	PVC	Chrome	72203
	4 in.	PVC	Brass	72144
	4 in.	PVC	Nickel	72174
	4 in.	PVC	Chrome	72204
	6 in.	PVC	Brass	72146
	6 in.	PVC	Nickel	72176
	6 in.	PVC	Chrome	72206

	Dimensional Data		
	A	B	C
2 in.*	5.25 in.	1.25 – 4.00 in.	2 in. Hub
3 in.	5.00 in.	1.25 – 4.00 in.	3 in. Hub
4 in.	5.25 in.	1.25 – 4.00 in.	4 in. Hub
6 in.	6.00 in.	1.25 – 4.00 in.	6 in. Hub

*2 in. base includes 3 in. x 2 in. bushing.

Grate Properties		
Finish	Open Area	Load*
Brass	7.00 in. ²	Medium
Nickel	7.00 in. ²	Medium
Chrome	7.00 in. ²	Medium

*Load is defined by ASME A112.21.1M.
Light Duty – Safe live load under 2000 lbs.
Medium Duty – Safe live load between 2000 lbs. and 4999 lbs.



4700 W. 160th St.
Cleveland, Ohio 44135
Ph: (800) 321-9532
Fax: (800) 321-9535
www.oatey.com

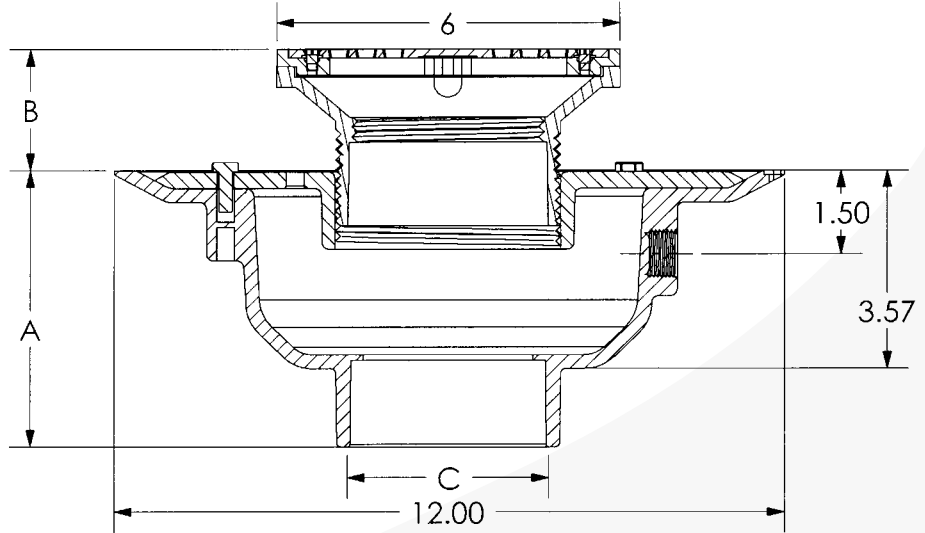
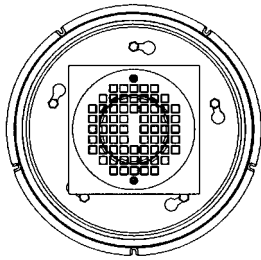
SUBMITTAL SPECIFICATION

**82000 Series
ABS Adjustable Commercial Drain
PVC Barrel With 6" Round Grate With Square Ring**



Engineering Specification: Oatey commercial grade floor drains are used for general service in restaurants, restrooms and other commercial applications where traffic is expected. Barrel assembly is completely adjustable to meet the finished floor height.

Job Reference



(All dimensions in inches)

- Barrel diameter is 3-1/2 in. IPS thread.
- Primer tap knock-out is 1/2 in. FIP thread.

✓	Socket Size (C)	Base Material	Grate Finish	Part Number
	2 in.	ABS	Brass	82142
	2 in.	ABS	Nickel	82172
	2 in.	ABS	Chrome	82202
	3 in.	ABS	Brass	82143
	3 in.	ABS	Nickel	82173
	3 in.	ABS	Chrome	82203
	4 in.	ABS	Brass	82144
	4 in.	ABS	Nickel	82174
	4 in.	ABS	Chrome	82204
	6 in.	ABS	Brass	82146
	6 in.	ABS	Nickel	82176
	6 in.	ABS	Chrome	82206

	Dimensional Data		
	A	B	C
2 in.*	5.25 in.	1.25 – 4.00 in.	2 in. Hub
3 in.	5.00 in.	1.25 – 4.00 in.	3 in. Hub
4 in.	5.25 in.	1.25 – 4.00 in.	4 in. Hub
6 in.	6.00 in.	1.25 – 4.00 in.	6 in. Hub

*2 in. base includes 3 in. x 2 in. bushing.

Grate Properties		
Finish	Open Area	Load*
Brass	7.00 in. ²	Medium
Nickel	7.00 in. ²	Medium
Chrome	7.00 in. ²	Medium

*Load is defined by ASME A112.21.1M.
Light Duty – Safe live load under 2000 lbs.
Medium Duty – Safe live load between 2000 lbs. and 4999 lbs.