

# Power Distribution Units (PDU)

## THANK YOU FOR YOUR PURCHASE

At Hoffman we depend on the feedback from valued customers such as yourself to help us develop effective cabinet, cable management, and power distribution solutions. Please contact us at [dataservice@hoffmanonline.com](mailto:dataservice@hoffmanonline.com) or 763-422-2661 with your comments and suggestions.

Below are guidelines to help you install your product safely. Your complete product instruction manual, including information on mounting options can be downloaded at:

<http://www.hoffmanonline.com/pdu>

### Installation Guidelines:

- The ambient temperature in the rack where the Power Distribution unit (PDU) is installed should be no greater than 25°C (77°F).
- Install the PDU such that the airflow required for safe operation is not compromised.
- Mount the PDU so that hazardous conditions due to uneven mechanical loading do not arise.
- Adhere strictly to nameplate ratings when connecting the PDU to the branch circuit. Avoid overloading circuits as this may damage wiring at the installation site.
- The PDU may have multiple power sources.
- The PDU relies on the building installation for protection from overcurrent and short circuits. A listed or certified circuit breaker is required in the building installation.
- A reliable ground should be maintained for all rack-mounted equipment. Particular attention should be given to supply connections other than direct connections to the branch circuit.
- Install the PDU so the input plug of all pluggable equipment may be disconnected for service.
- There are no field serviceable parts in the PDU. Return units to the manufacturer for servicing.
- The PDU is intended for installation in Restricted Access Locations. Only service personnel should install and access the PDU.
- PDU is for Indoor Use Only. Do not mount to furniture such that spilled liquid could come into contact with the PDU.

### SMART Unit Installation

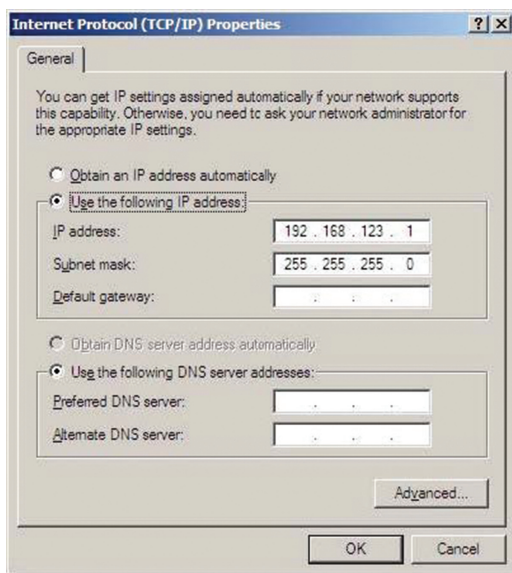
If you are installing a Hoffman SMART unit, please read the Quick Start Guide for a simplistic 10 minute set up process.

To fully tap the potential of your SMART unit and capitalize on your investment, we suggest you thoroughly review the complete product instruction manual.

This manual, including information on mounting options can be downloaded at:  
<http://www.hoffmanonline.com/pdu>

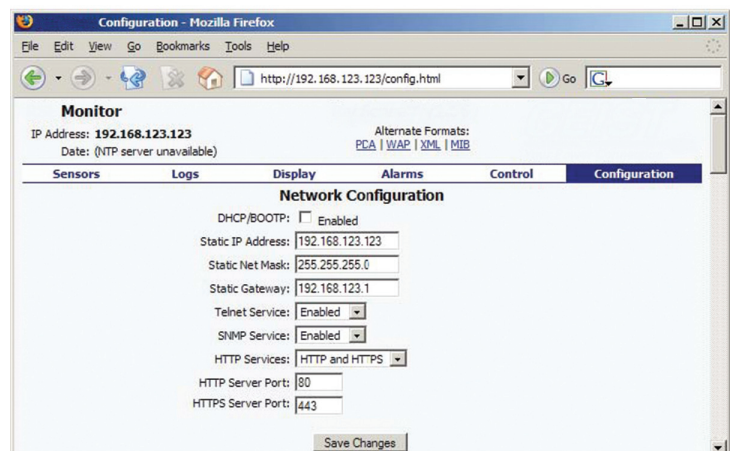
## Quick Start Guide for First Time Setup

1. Connect the Hoffman SMART device to your computer using a crossover cable or a hub.
  - a. Note that the network connection may drop and reconnect after the unit is turned on. This is normal and should stop after two cycles.
2. On your computer, go to “Start > Settings > Control Panel > Network and Dial Up Connections”
3. Right Click on “Local Area Connection” and select “Properties”
4. Select “Internet Protocol” (TCP/IP) and then select “Properties”
5. Select the option to “Use the following IP address” and enter:
  - a. IP address: 192.168.123.1
  - b. Subnet mask: 255.255.255.0
  - c. Default gateway: (Leave Blank)
6. Click “OK” twice
7. You can now access the unit using your web browser at the permanent IP address of 192.168.123.123
8. After configuring your computer’s network settings, verify that the unit is working by pointing your web browser to <http://192.168.123.123>. The Sensors page should appear.



## Configuring the Unit

Network settings and setup can be accessed via the Configuration page. Enter your network settings into the boxes provided and hit “Save Changes.” The unit will reboot itself. Depending on your settings, it will either become active on the IP address you set or will attempt to contact a DHCP server. The unit will still be available via its backup address, 192.168.123.123, should something go wrong during setup.



**HOFFMAN (World Headquarters)**  
 2100 Hoffman Way  
 Anoka, MN 55303-1745 USA  
 (763) 421-2240 Fax: (763) 422-2178  
 Customer Service: (763) 422-2211  
[www.hoffmanonline.com](http://www.hoffmanonline.com)

**Canada**  
**HOFFMAN**  
 111 Grangeway Avenue  
 Suite 504  
 Scarborough, Ontario M1H 3E9  
 (416) 289-2770 Fax: (416) 289-2883  
 1-800-668-2500 (Canada only)

**Mexico**  
**HOFFMAN MEXICO, S de RL de CV**  
 Arquímedes No. 33  
 Piso 1  
 Col. Palmas Polanco  
 México, DF  
 CP 11560  
 P: (55) 5280-1596  
 F: (55) 5280-8827 / 5280-8167