



No.:

Date: 28-DEC-2012

Customer :

TECHNICAL PROPOSAL

Single-phase induction motor - Squirrel cage rotor

Product line : Compressor Duty : Single-Phase - ODP

Catalog Number : 00156OS1BCDD56

List Price : \$311

Notes:

Performed by:

Checked:



No.:

Date: 28-DEC-2012

DATA SHEET

Single-phase induction motor - Squirrel cage rotor

Customer :
Product line : Compressor Duty : Single-Phase - ODP

Frame : D56
Output : 1.5 HP
Frequency : 60 Hz
Poles : 2
Full load speed : 3430
Slip : 4.72 %
Voltage : 115/208-230 V
Rated current : 16.8/9.20-8.40 A
Locked rotor current : 87.4/43.7 A
Locked rotor current (I_L/I_n) : 5.2
No-load current : 8.60/4.30 A
Full load torque : 2.27 lb.ft
Locked rotor torque : 200 %
Breakdown torque : 190 %
Design : ---
Insulation class : B
Temperature rise : 80 K
Locked rotor time : 6 s (hot)
Service factor : 1.00 (1.00 at 208V)
Duty cycle : COMPRESSOR
Ambient temperature : -20°C - +40°C
Altitude : 1000
Degree of Protection : IP21
Approximate weight : 34 lb
Moment of inertia : 0.04153 sq.ft.lb
Noise level : ---

| | D.E. | N.D.E. | Load | Power factor | Efficiency (%) |
|---------------------|---------|---------|------|--------------|----------------|
| Bearings | 6204 ZZ | 6203 ZZ | 100% | 0.84 | 68.0 |
| Regreasing interval | --- | --- | 75% | 0.78 | 68.0 |
| Grease amount | --- | --- | 50% | 0.68 | 64.0 |

Notes:

Performed by

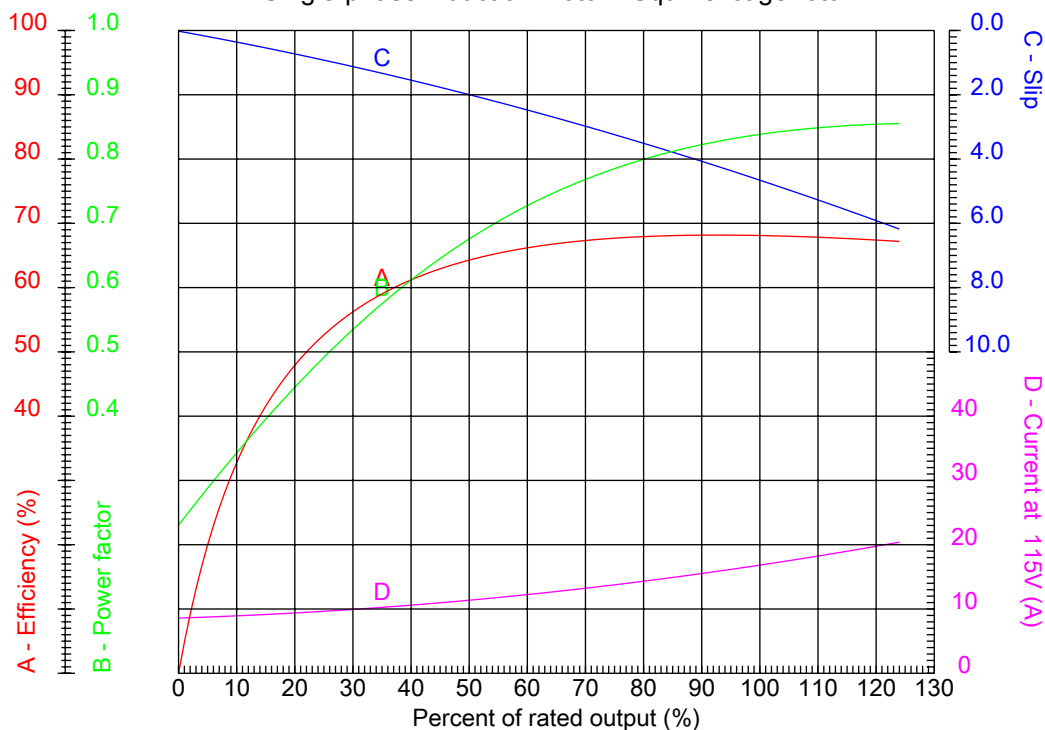
Checked



No.:

Date: 28-DEC-2012

PERFORMANCE CURVES RELATED TO RATED OUTPUT
Single-phase induction motor - Squirrel cage rotor



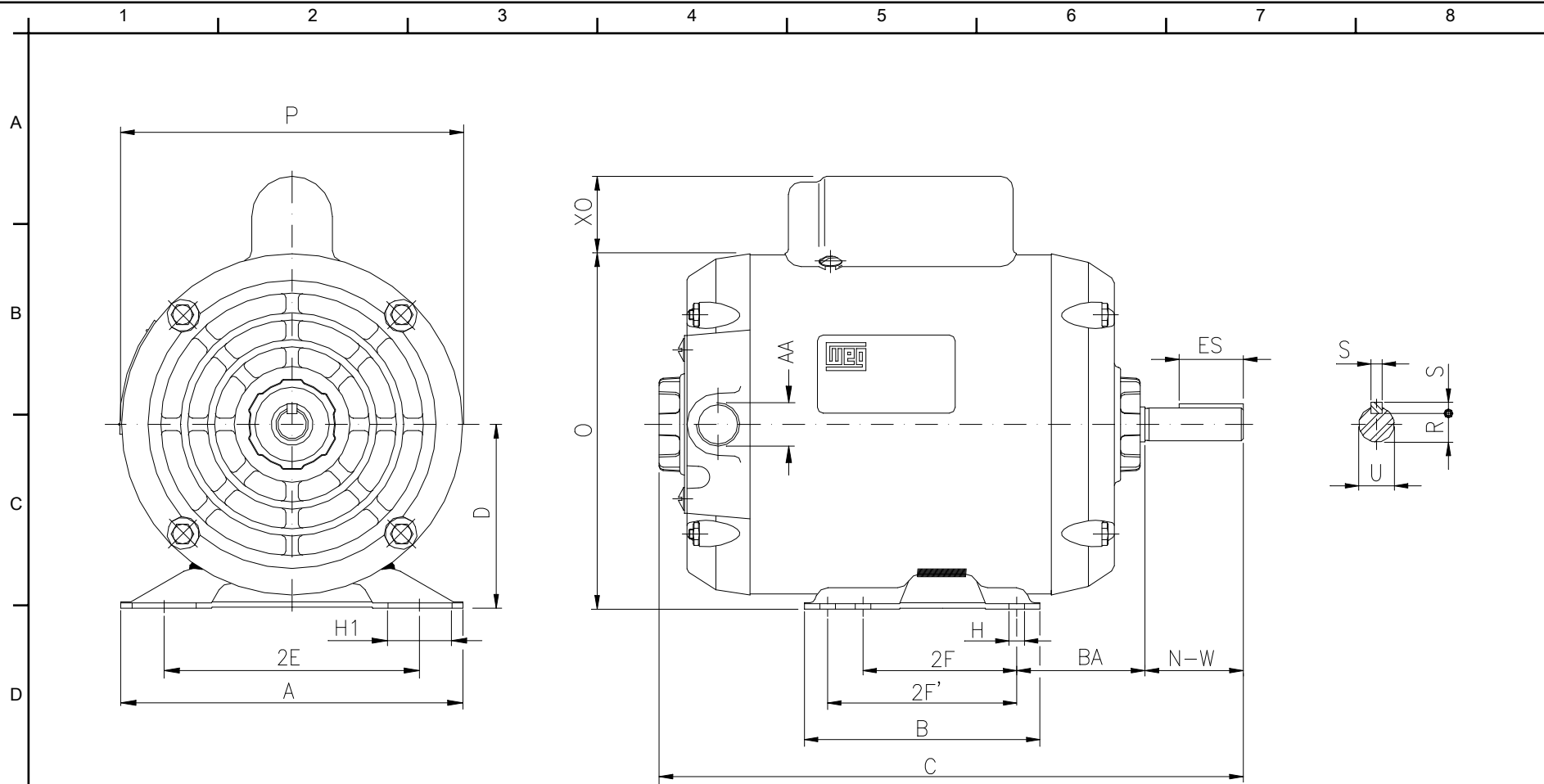
Customer :
Product line : Compressor Duty : Single-Phase - ODP

| | | | |
|------------------|--------------------|--|-----------------------|
| Frame | : D56 | Locked rotor current (I _l /I _n) | : 5.2 |
| Output | : 1.5 HP | Duty cycle | : COMPRESSOR |
| Frequency | : 60 Hz | Service factor | : 1.00 (1.00 at 208V) |
| Full load speed | : 3430 | Design | : --- |
| Voltage | : 115/208-230 V | Locked rotor torque | : 200 % |
| Rated current | : 16.8/9.20-8.40 A | Breakdown torque | : 190 % |
| Insulation class | : B | | |

Notes:

Performed by

Checked



Notes:

Performed by:

Checked:

Customer:

| | | | | |
|--------|--------|----------|-------|-------|
| 2E | 2F | H | BA | A |
| 4.874 | 3.000 | 0.342 | 2.748 | 6.535 |
| B | C | D | G | J |
| 4.016 | 12.283 | 3.500 | 3.04 | 1.220 |
| O | P | ES | S | N-W |
| 6.772 | 6.496 | 1.102 | 0.187 | 1.874 |
| U | R | AA | | |
| 0.6250 | 0.517 | NPT 1/2" | | |

Compressor Duty : Single-Phase - ODP

Single-phase induction motor
Frame D56 - IP21

28-DEC-2012

