



No.:

Date: 26-DEC-2012

Customer :

TECHNICAL PROPOSAL

Three-phase induction motor - Squirrel cage rotor

Product line : Close Coupled Pump: Three-Phase - W22 "JM" Type - TEFC - High Efficiency

Catalog Number : 00736EP3H184JM-W22

List Price : \$1,125

Notes:

Performed by:

Checked:



No.:

Date: 26-DEC-2012

DATA SHEET

Three-phase induction motor - Squirrel cage rotor

Customer :
Product line : Close Coupled Pump: Three-Phase - W22 "JM" Type - TEFC - High Efficiency

Frame : 184JM
Output : 7.5 HP
Frequency : 60 Hz
Poles : 2
Full load speed : 3470
Slip : 3.61 %
Voltage : 575 V
Rated current : 6.78 A
Locked rotor current : 48.8 A
Locked rotor current (I_L/I_n) : 7.2
No-load current : 1.68 A
Full load torque : 11.2 lb.ft
Locked rotor torque : 220 %
Breakdown torque : 290 %
Design : B
Insulation class : F
Temperature rise : 80 K
Locked rotor time : 16 s (hot)
Service factor : 1.15
Duty cycle : S1
Ambient temperature : -20°C - +40°C
Altitude : 1000
Degree of Protection : IP55
Approximate weight : 93 lb
Moment of inertia : 0.22876 sq.ft.lb
Noise level : 69 dB(A)

	D.E.	N.D.E.	Load	Power factor	Efficiency (%)
Bearings	6307 ZZ	6206 ZZ	100%	0.92	88.5
Regreasing interval	---	---	75%	0.90	88.5
Grease amount	---	---	50%	0.85	87.5

Notes:

Performed by

Checked

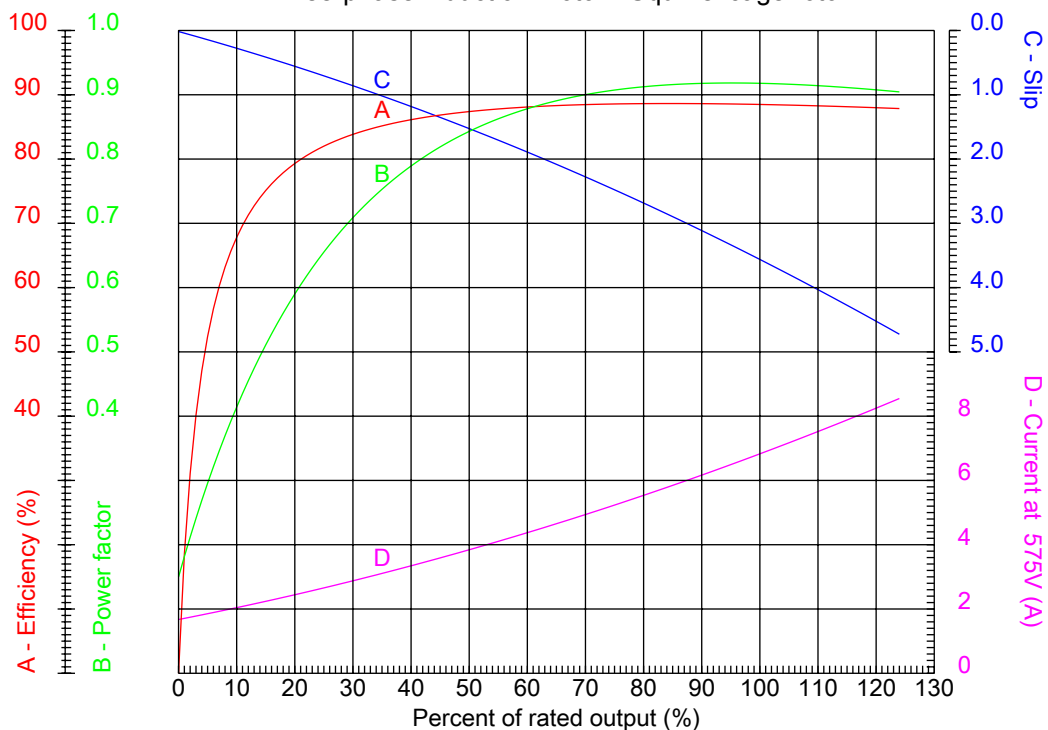


No.:

Date: 26-DEC-2012

PERFORMANCE CURVES RELATED TO RATED OUTPUT

Three-phase induction motor - Squirrel cage rotor



Customer :
Product line : Close Coupled Pump: Three-Phase - W22 "JM" Type - TEFC - High Efficiency

Frame	: 184JM	Locked rotor current (I _l /I _n)	: 7.2
Output	: 7.5 HP	Duty cycle	: S1
Frequency	: 60 Hz	Service factor	: 1.15
Full load speed	: 3470	Design	: B
Voltage	: 575 V	Locked rotor torque	: 220 %
Rated current	: 6.78 A	Breakdown torque	: 290 %
Insulation class	: F		

Notes:

Performed by

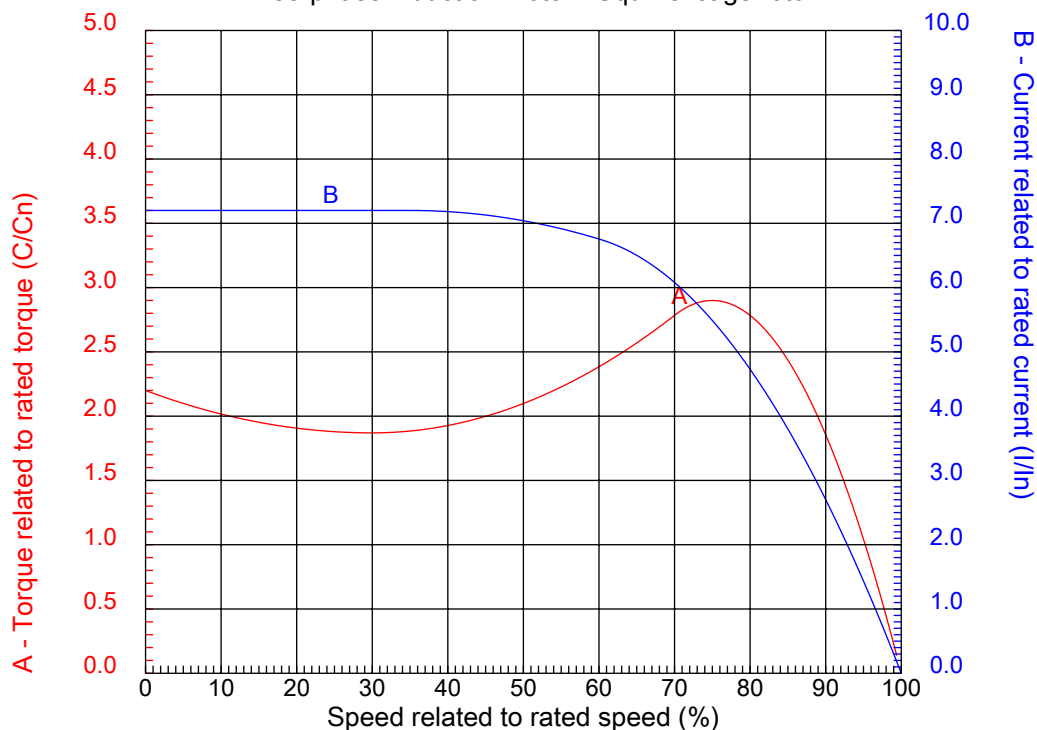
Checked



No.:

Date: 26-DEC-2012

CHARACTERISTIC CURVES RELATED TO SPEED Three-phase induction motor - Squirrel cage rotor



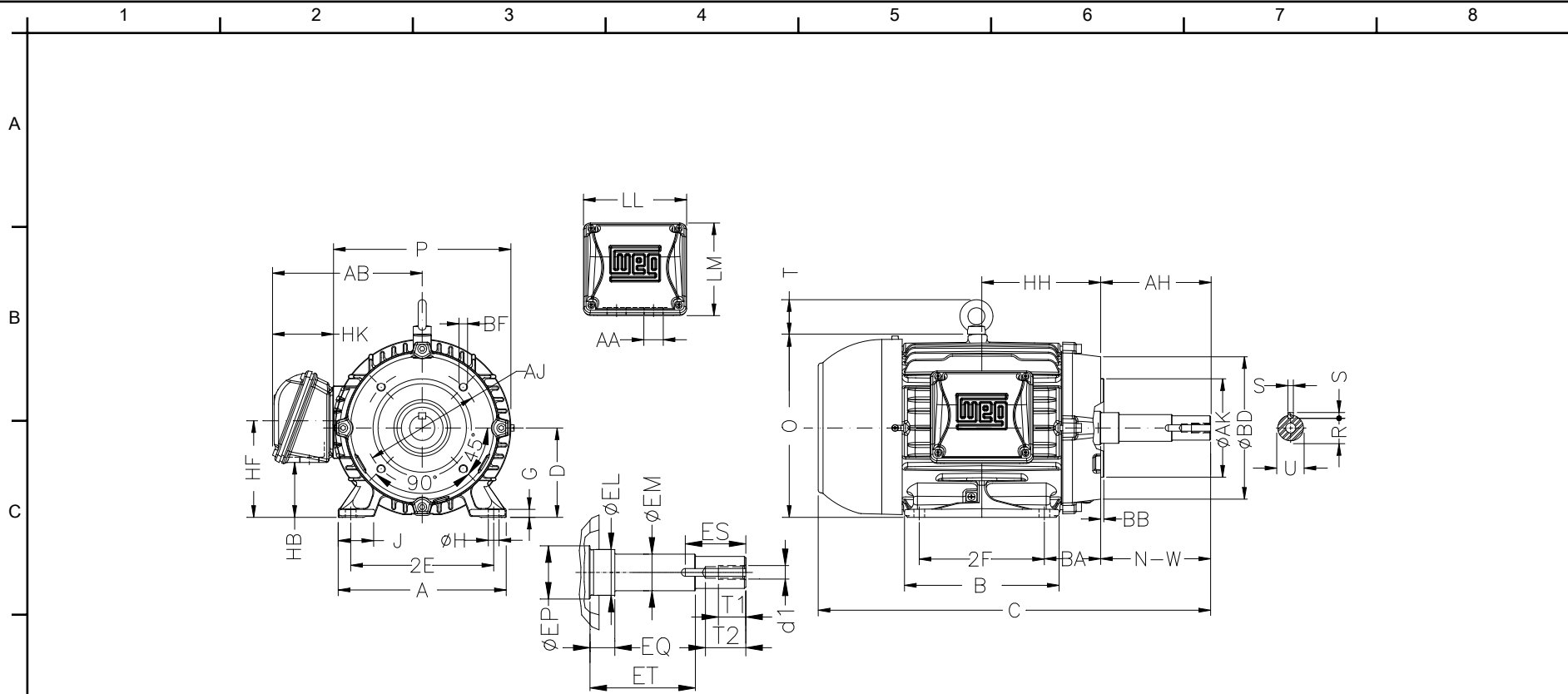
Customer :
Product line : Close Coupled Pump: Three-Phase - W22 "JM" Type - TEFC - High Efficiency

Frame	: 184JM	Locked rotor current (I _l /I _n)	: 7.2
Output	: 7.5 HP	Duty cycle	: S1
Frequency	: 60 Hz	Service factor	: 1.15
Full load speed	: 3470	Design	: B
Voltage	: 575 V	Locked rotor torque	: 220 %
Rated current	: 6.78 A	Breakdown torque	: 290 %
Insulation class	: F		

Notes:

Performed by

Checked



Notes:

2E	J	A	P	AB
7.500	1.594	8.661	8.740	7.559
2F	B	BA	D	G
5.500	6.969	2.756	4.500	0.394
O	T	HD	H	AA
9.343	1.772	11.115	0.406	NPT 1"
ER	EQ	ET	U	EM
4.258	0.630	2.880	0.874	1.000
EL	EP	ES	t1	t2
1.250	1.376	1.654	0.748	1.102
C	Flange	AJ	AK	BD
17.020	FC-149	5.874	4.500	6.496
BF	BB	BC	AH	
UNC 3/8"x16	0.157	---	4.258	

Performed by:

Checked:

Customer:

Close Coupled Pump: Three-Phase - W22 "JM" Type - TEFC - High Efficiency

Three-phase induction motor
Frame 184JM - IP55

26-DEC-2012

