



No.:

Date: 27-DEC-2012

Customer :

TECHNICAL PROPOSAL

Three-phase induction motor - Squirrel cage rotor

Product line : Three-Phase : Explosion Proof - High Efficiency

Catalog Number : 04018XP3ER324TC

List Price : \$4,643

Notes:

Performed by:

Checked:



No.:

Date: 27-DEC-2012

## DATA SHEET

### Three-phase induction motor - Squirrel cage rotor

Customer :  
Product line : Three-Phase : Explosion Proof - High Efficiency

Frame : 324T  
Output : 40 HP  
Frequency : 60 Hz  
Poles : 4  
Full load speed : 1770  
Slip : 1.67 %  
Voltage : 208-230/460 V  
Rated current : 105-95.2/47.6 A  
Locked rotor current : 571/286 A  
Locked rotor current (I<sub>L</sub>/I<sub>n</sub>) : 6.0  
No-load current : 33.0/16.5 A  
Full load torque : 117 lb.ft  
Locked rotor torque : 230 %  
Breakdown torque : 230 %  
Design : B  
Insulation class : F  
Temperature rise : 80 K  
Locked rotor time : 25 s (hot)  
Service factor : 1.15  
Duty cycle : S1  
Ambient temperature : -20°C - +40°C  
Altitude : 1000  
Degree of Protection : IP54  
Approximate weight : 621 lb  
Moment of inertia : 7.8534 sq.ft.lb  
Noise level : 71 dB(A)

	D.E.	N.D.E.	Load	Power factor	Efficiency (%)
Bearings	6312 C3	6212 Z-C3	100%	0.85	93.0
Regreasing interval	20000 h	20000 h	75%	0.82	93.0
Grease amount	21 g	13 g	50%	0.73	92.4

Notes:

Performed by

Checked

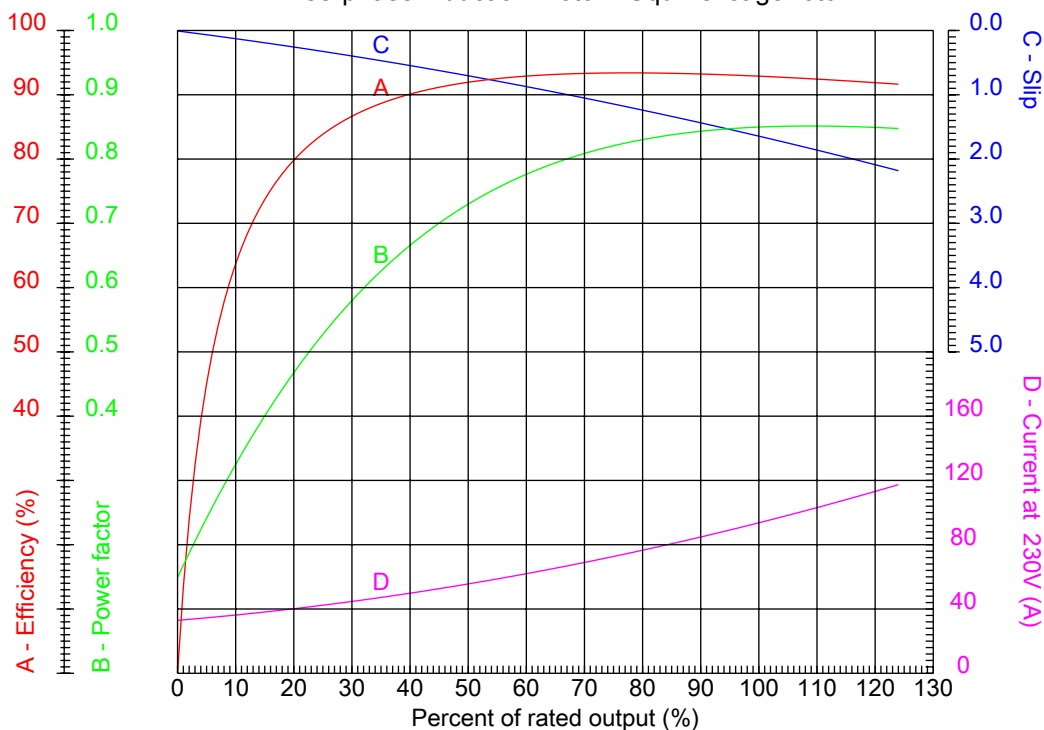


No.:

Date: 27-DEC-2012

### PERFORMANCE CURVES RELATED TO RATED OUTPUT

Three-phase induction motor - Squirrel cage rotor



Customer :  
Product line : Three-Phase : Explosion Proof - High Efficiency

Frame	: 324T	Locked rotor current (I <sub>l</sub> /I <sub>n</sub> )	: 6.0
Output	: 40 HP	Duty cycle	: S1
Frequency	: 60 Hz	Service factor	: 1.15
Full load speed	: 1770	Design	: B
Voltage	: 208-230/460 V	Locked rotor torque	: 230 %
Rated current	: 105-95.2/47.6 A	Breakdown torque	: 230 %
Insulation class	: F		

Notes:

Performed by

Checked

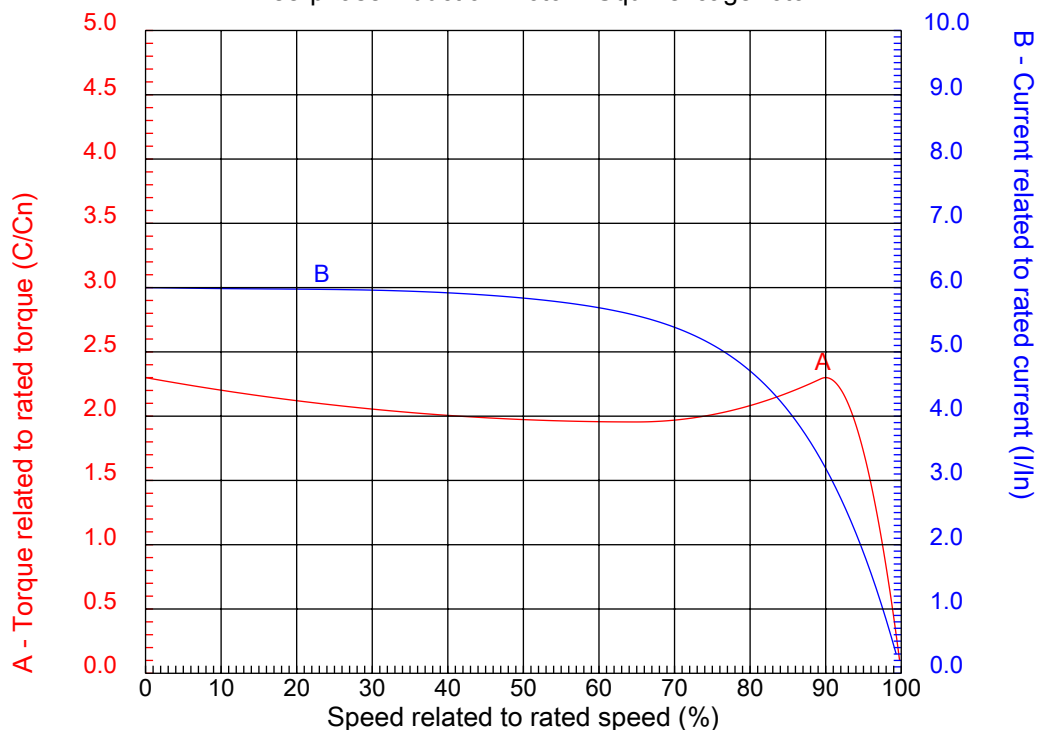


No.:

Date: 27-DEC-2012

### CHARACTERISTIC CURVES RELATED TO SPEED

Three-phase induction motor - Squirrel cage rotor



Customer :  
Product line : Three-Phase : Explosion Proof - High Efficiency

Frame	: 324T	Locked rotor current (I <sub>l</sub> /I <sub>n</sub> )	: 6.0
Output	: 40 HP	Duty cycle	: S1
Frequency	: 60 Hz	Service factor	: 1.15
Full load speed	: 1770	Design	: B
Voltage	: 208-230/460 V	Locked rotor torque	: 230 %
Rated current	: 105-95.2/47.6 A	Breakdown torque	: 230 %
Insulation class	: F		

Notes:

Performed by

Checked

1 2 3 4 5 6 7 8

A

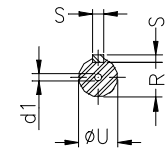
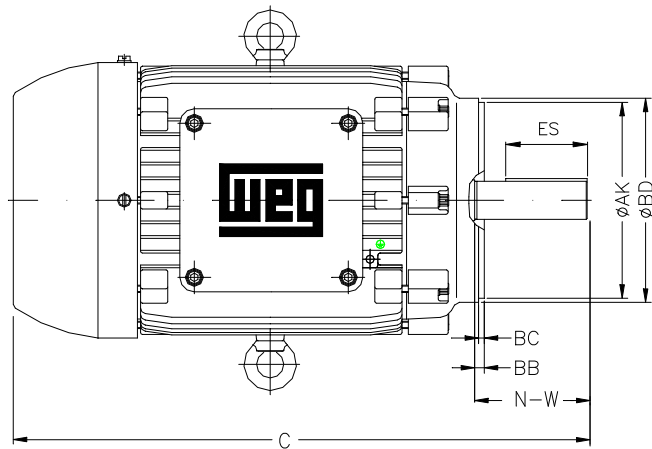
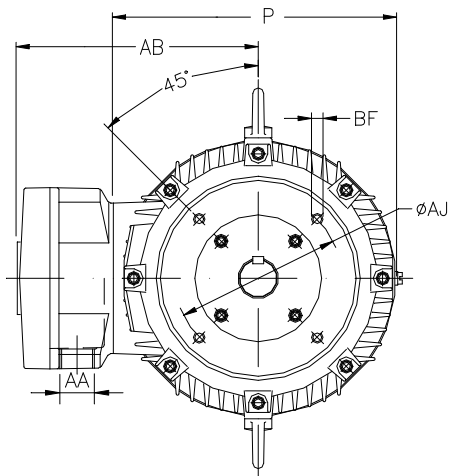
B

C

D

E

F



Notes:

Performed by:

Checked:

Customer:

Three-Phase : Explosion Proof - High Efficiency

Three-phase induction motor  
Frame 324T - IP54

27-DEC-2012



P 15.697	ES 3.937	S 0.500	depth 0.500	N-W 5.250
U 2.125	R 1.844	AB 12.961	C 29.602	AA NPT 2"
d1 A 4	d2 A 4	Flange FC-279	AJ 11.000	AK 12.500
BD 13.583	BF UNC 5/8"x11	BB 0.250	BC 0.250	AH 5.000