



J&D Manufacturing



LEADERS IN MOVING THE WORLD'S AIR

ES Shutter Fan with or Without Cord

J&D Manufacturing's ES Shutter Fan is a durable agriculture grade exhaust fan perfect for barn and building peaks, greenhouses, warehouses and more. ES Shutter Fans are available without a cord, or pre-wired with a cord and plug for "No Electrician Required" installation. Fans ship fully assembled out of the box so you're up and running in no time!

Features

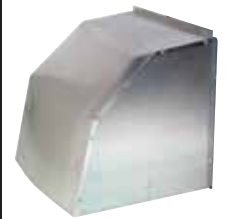
- Smooth and quiet operation
- Comes totally assembled out of the box
- Models with cord are pre-wired for 115 Volts with 3-prong plug. No electrician required.
- Balanced 3 bladed aluminum prop with a zinc plated steel hub
- Chrome guard allows for easy cleaning and meets OSHA 1910.212(a)(5) requirements to mount at any height on inlet side of fan. (When mounted, shutter side should be 7' above ground.)
- High efficiency aluminum shutters with tie bar to eliminate shutter flapping and opening on windy days
- Energy efficient, totally enclosed, maintenance free, direct drive high efficiency motors have completely sealed ball bearings, covered by a **Full Two Year Warranty**.

No Electrician Required
for Corded Models



Optional Weather Hood

Shutter Fan Size	Weather Hood
10"	VFT140855
12"	VFT140855
16"	VFT140856
20"	VFT140857
24"	VFT140858
30"	VFT140859



Weather hood for exterior shutter side



Part#	Size	HP	Volt	Amps	HZ	Phs	Spd	CFM @.0" SP	CFM/Watt Hi/Low @.0" SP	CFM @.05" SP	CFM/Watt Hi/Low @.05" SP	RPM Hi/Low	Rough Opening
With Cord													
VES10C	10"	1/8	115	0.8	60	1	3	697	12/9	670	11/9	1,706/1,390	12½" x 12½"
VES12C	12"	1/10	115~	1.0	60	1	S/Var^	1,846	9/7	1,775	9/7	1,625/600	12½" x 12½"
VES161C	16"	1/10	115~	1.0	60	1	S/Var^	2,951	12/9	2,810	11/9	1,625/600	16½" x 16½"
VES201C	20"	1/10	115~	1.0	60	1	S/Var^	3,233	12/10	3,050	12/9	1,625/600	20½" x 20½"
VES20C	20"	1/3	115~	3.5	60	1	S/Var^	5,077	13/10	4,790	12/10	1,725/600	20½" x 20½"
VES24C	24"	1/2	115~	4.8	50/60	1	S/Var^	6,487	17/14	6,120	16/12	1,725/600	24½" x 24½"
VES30C	30"	1/2	115~	5.1	50/60	1	1	7,086	23/18	6,685	21/17	844/600	30½" x 30½"
Without Cord													
VES12	12"	1/10	115/230	1.0/0.5	60	1	S/Var^	1,846	9/7	1,775	9/7	1,625/600	12½" x 12½"
VES161	16"	1/10	115/230	1.0/0.5	60	1	S/Var^	2,951	12/9	2,810	11/9	1,625/600	16½" x 16½"
VES201	20"	1/10	115/230	1.0/0.5	60	1	S/Var^	3,233	12/10	3,050	12/9	1,625/600	20½" x 20½"
VES20	20"	1/3	115/230	3.5/1.7	60	1	S/Var^	5,077	13/10	4,790	12/10	1,725/600	20½" x 20½"
VES24	24"	1/2	115/230	4.8/2.4	50/60	1	S/Var^	6,487	17/14	6,120	16/12	1,725/600	24½" x 24½"
VES30	30"	1/2	115/230	5.1/2.6	50/60	1	1	7,086	13/11	6,685	12/10	844/600	30½" x 30½"
VES303	30"	1/2	230/460	2.6/1.3	50/60	3	1	6,922	13/10	6,530	12/9	825/600	30½" x 30½"

~ These units come prewired for 115 Volts (electrician may rewire for 230 Volts)

^ Variable speed fans require separate variable speed control to adjust fan speed.