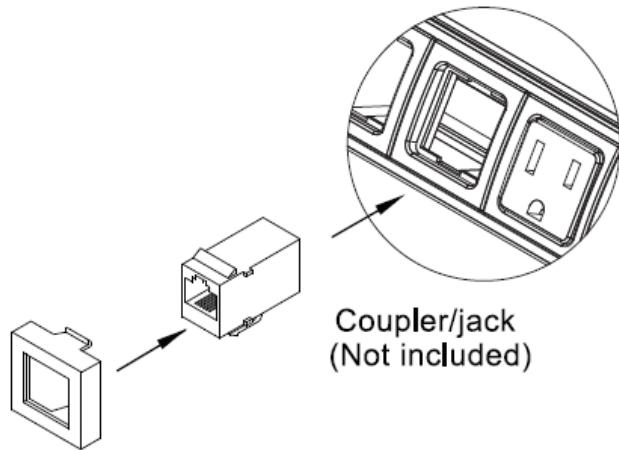


## Assembly - Step 4:



Select the appropriate adapter from the chart in step 3.  
Snap jack into adapter following the instructions provided with the jack.  
Once assembled, snap adapter into the notched, square holes in the orientation shown.



For details about product warranty, please visit [www.kendallhoward.com](http://www.kendallhoward.com)

**DISCLAIMER:** Kendall Howard LLC endeavors to make this manual accurate and complete. However, Kendall Howard LLC makes no representations or warranties of any kind, expressed or implied, about whether the use of products contained herein would infringe any rights or the correctness, accuracy or reliability of the information contained herein or that said information covers all details, conditions or variations. The information herein does not provide for every possible contingency in connection with the installation or use of the product(s). The information contained in this document is subject to change without notice or obligation. Kendall Howard LLC assumes no responsibility for the accuracy, completeness or reliability of the information contained in this document. Any reliance placed on the information is therefore strictly at your own risk.

## Instructions / Directions

### Power/Data Conversion Kit #5500-3-100-01



[www.kendallhoward.com](http://www.kendallhoward.com)

**KENDALL HOWARD**  <sup>TM</sup>  
INNOVATORS IN PRODUCT DESIGN

Address: 10152 Liberty Lane  
Chisago City, Minnesota, 55013  
United States of America

Phone: 651-213-1333  
Fax: 800-418-6897

## Included:

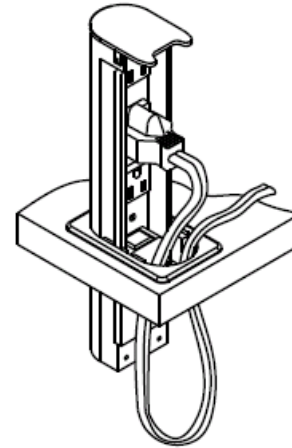


(1) Voice/Data Adapter Kit



(1) Power/Data Center

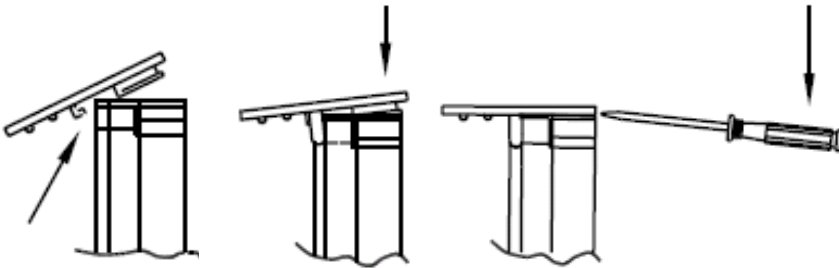
## Assembly - Step 2:



Slide the Power/Data Center through the grommet. Be sure the power supply/communication cable is free to move up & down with the power center.

To remove the Power/Data Center—Slide the Power/Data Center to its upright position, squeeze the sides of the power center close to the grommet and lift the power center out of the grommet.

## Assembly - Step 1:



Place hook on the bottom of the cap under the front edge of the power center and slide toward rear.

Tap down on the top of the cap to lock in place on the power center. To remove the cap, pry up on the back edge of the cap.

2

## Assembly - Step 3:

Select appropriate adapter plate to fit with your preferred connectors

Adapter	Manufacturer
AA	Systimax/CommScope
AA	Uniprise/Commscope
BB	L-Com Keystone Modular
BB	Tyco SL, and 110 Connect Series Modular Jacks
BB	Siemon Keystone Style
BB	Allen Tel Versa Tap Series
BB	Leviton Quick Port <sup>®</sup> Series
BB	Nordx Keystone Style
CC	Tyco SL Coupler Series
CC	Krone 6000 Series/ADC
CC	Hubbell Xcelerator™ Keystone Series
DD	Blank (no coupler/jack)
EE	Ortronics TracJack Series
FF	Panduit Mini-Com Series
GG	Microphone Jack/3-pin XLR, solder type only
HH	Video Monitor Jack/DB-15, panel mount solder style

3