



No.:

Date: 17-DEC-2012

Customer :

TECHNICAL PROPOSAL

Three-phase induction motor - Squirrel cage rotor

Product line : Three-Phase : Rolled Steel Motor - NEMA Premium Efficiency

Catalog Number : 00118ET3ERS143T

List Price : \$459

Notes:

Performed by:

Checked:



No.:

Date: 17-DEC-2012

DATA SHEET

Three-phase induction motor - Squirrel cage rotor

Customer :
Product line : Three-Phase : Rolled Steel Motor - NEMA Premium Efficiency

Frame : 143/5T
Output : 1 HP
Frequency : 60 Hz
Poles : 4
Full load speed : 1750
Slip : 2.78 %
Voltage : 208-230/460 V
Rated current : 3.10-3.10/1.55 A
Locked rotor current : 26.7/13.3 A
Locked rotor current (I_L/I_n) : 8.6
No-load current : 1.95/0.975 A
Full load torque : 2.96 lb.ft
Locked rotor torque : 400 %
Breakdown torque : 430 %
Design : B
Insulation class : F
Temperature rise : 80 K
Locked rotor time : 15 s (hot)
Service factor : 1.15 (1.00 at 208V)
Duty cycle : S1
Ambient temperature : -20°C - +40°C
Altitude : 1000
Degree of Protection : IP55
Approximate weight : 32 lb
Moment of inertia : 0.10655 sq.ft.lb
Noise level : ---

	D.E.	N.D.E.	Load	Power factor	Efficiency (%)
Bearings	6205 ZZ	6203 ZZ	100%	0.73	85.5
Regreasing interval	---	---	75%	0.64	84.0
Grease amount	---	---	50%	0.51	80.0

Notes:

Performed by

Checked

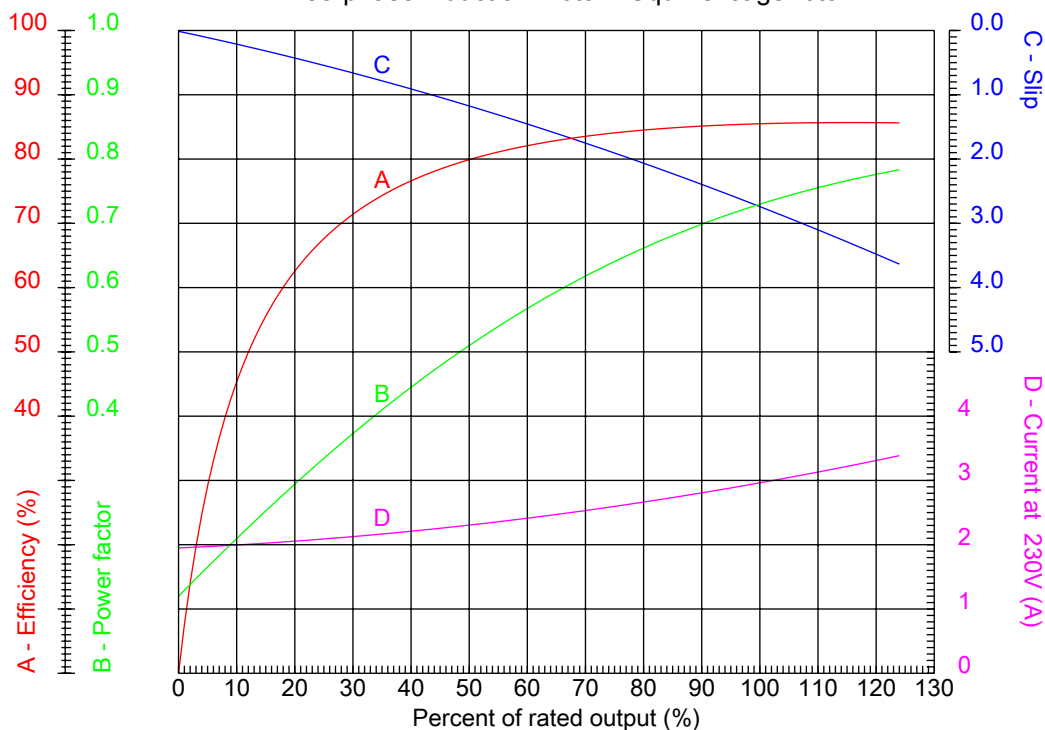


No.:

Date: 17-DEC-2012

PERFORMANCE CURVES RELATED TO RATED OUTPUT

Three-phase induction motor - Squirrel cage rotor



Customer :
 Product line : Three-Phase : Rolled Steel Motor - NEMA Premium Efficiency

Frame	: 143/5T	Locked rotor current (I _l /I _n)	: 8.6
Output	: 1 HP	Duty cycle	: S1
Frequency	: 60 Hz	Service factor	: 1.15 (1.00 at 208V)
Full load speed	: 1750	Design	: B
Voltage	: 208-230/460 V	Locked rotor torque	: 400 %
Rated current	: 3.10-3.10/1.55 A	Breakdown torque	: 430 %
Insulation class	: F		

Notes:

Performed by

Checked

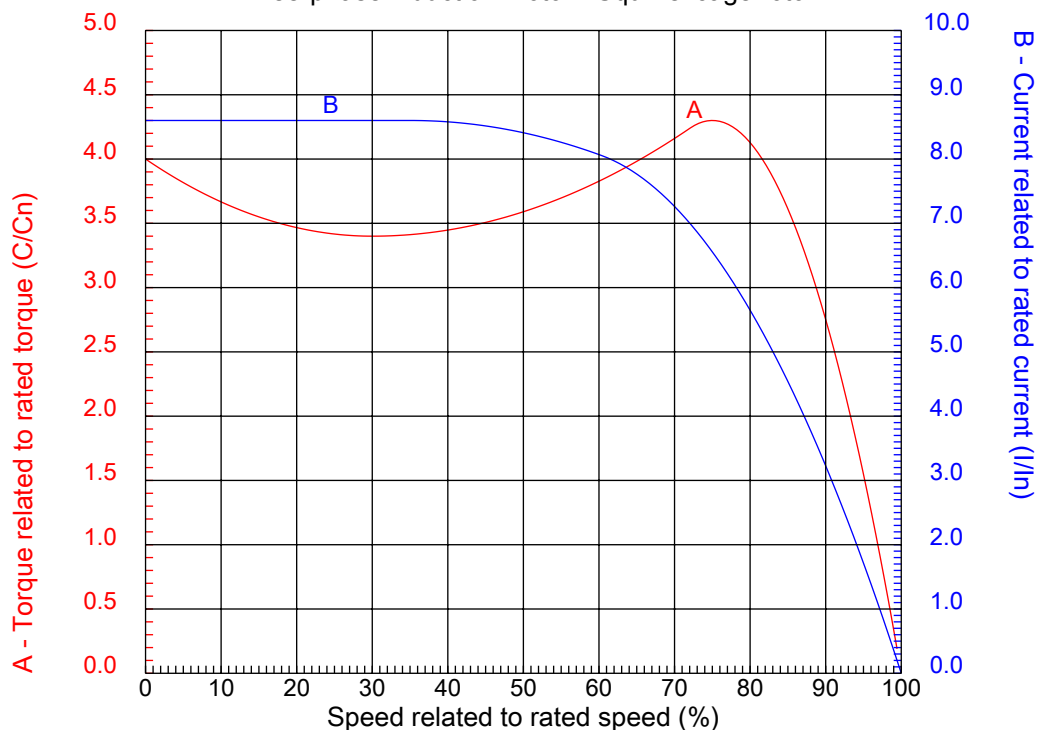


No.:

Date: 17-DEC-2012

CHARACTERISTIC CURVES RELATED TO SPEED

Three-phase induction motor - Squirrel cage rotor



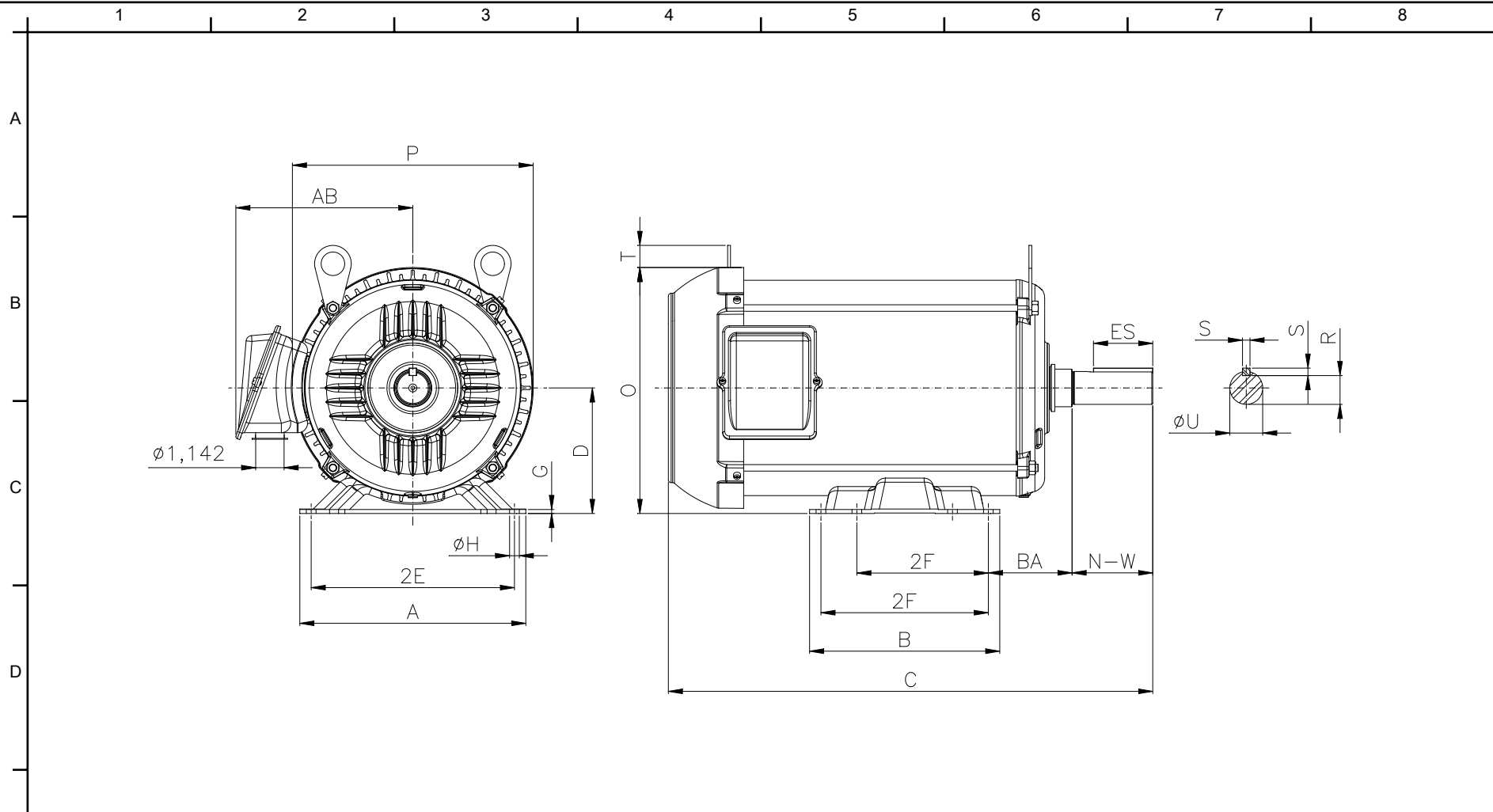
Customer :
Product line : Three-Phase : Rolled Steel Motor - NEMA Premium Efficiency

Frame	: 143/5T	Locked rotor current (I _l /I _n)	: 8.6
Output	: 1 HP	Duty cycle	: S1
Frequency	: 60 Hz	Service factor	: 1.15 (1.00 at 208V)
Full load speed	: 1750	Design	: B
Voltage	: 208-230/460 V	Locked rotor torque	: 400 %
Rated current	: 3.10-3.10/1.55 A	Breakdown torque	: 430 %
Insulation class	: F		

Notes:

Performed by

Checked



Notes:

2E 5.500	J 1.732	A 6.535	P 7.323	AB 5.433
2F 4.000/5.000	K 2.25	B 6.496	BA 2.250	U 0.8750
N-W 2.250	ES 1.417	S 0.187	R 0.766	depth 0.187
D 3.500	O 7.165	T 0.237	H 0.343	C 14.095
FC 7.874	d1 A 4	d2 DM6	Flange FC-149	AJ 5.875
AK 4.500	BD 6.535	BF UNC 3/8"x16	BB 0.157	BC 9
AH				

Performed by:

Checked:

Customer:

Three-Phase : Rolled Steel Motor - NEMA Premium Efficiency

Three-phase induction motor
Frame 143/5T - IP55

17-DEC-2012

