



No.:

Date: 17-DEC-2012

Customer :

TECHNICAL PROPOSAL

Three-phase induction motor - Squirrel cage rotor

Product line : W22 NEMA Premium - Ball Bearings

Catalog Number : 06036ET3G364TS-W22

List Price : \$7,552

Notes:

Performed by:

Checked:



No.:

Date: 17-DEC-2012

DATA SHEET

Three-phase induction motor - Squirrel cage rotor

Customer :
Product line : W22 NEMA Premium - Ball Bearings

Frame : 364/5TS
Output : 60 HP
Frequency : 60 Hz
Poles : 2
Full load speed : 3560
Slip : 1.11 %
Voltage : 460 V
Rated current : 67.0 A
Locked rotor current : 442 A
Locked rotor current (I_L/I_n) : 6.6
No-load current : 15.0 A
Full load torque : 87.3 lb.ft
Locked rotor torque : 200 %
Breakdown torque : 260 %
Design : B
Insulation class : F
Temperature rise : 80 K
Locked rotor time : 14 s (hot)
Service factor : 1.25
Duty cycle : S1
Ambient temperature : -20°C - +40°C
Altitude : 1000
Degree of Protection : IP55
Approximate weight : 825 lb
Moment of inertia : 10.642 sq.ft.lb
Noise level : 79 dB(A)

	D.E.	N.D.E.	Load	Power factor	Efficiency (%)
Bearings	6314 C3	6314 C3	100%	0.90	93.6
Regreasing interval	4000 h	4000 h	75%	0.88	93.0
Grease amount	27 g	27 g	50%	0.81	91.7

Notes:

Performed by

Checked

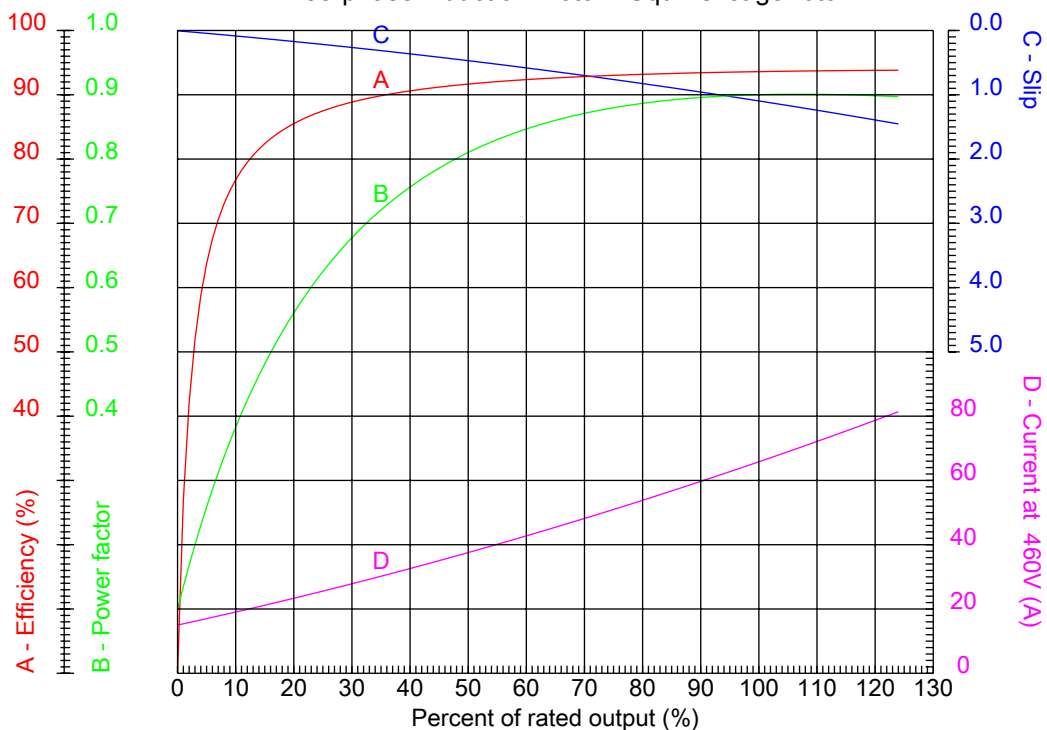


No.:

Date: 17-DEC-2012

PERFORMANCE CURVES RELATED TO RATED OUTPUT

Three-phase induction motor - Squirrel cage rotor



Customer :
Product line : W22 NEMA Premium - Ball Bearings

Frame	: 364/5TS	Locked rotor current (I _l /I _n)	: 6.6
Output	: 60 HP	Duty cycle	: S1
Frequency	: 60 Hz	Service factor	: 1.25
Full load speed	: 3560	Design	: B
Voltage	: 460 V	Locked rotor torque	: 200 %
Rated current	: 67.0 A	Breakdown torque	: 260 %
Insulation class	: F		

Notes:

Performed by

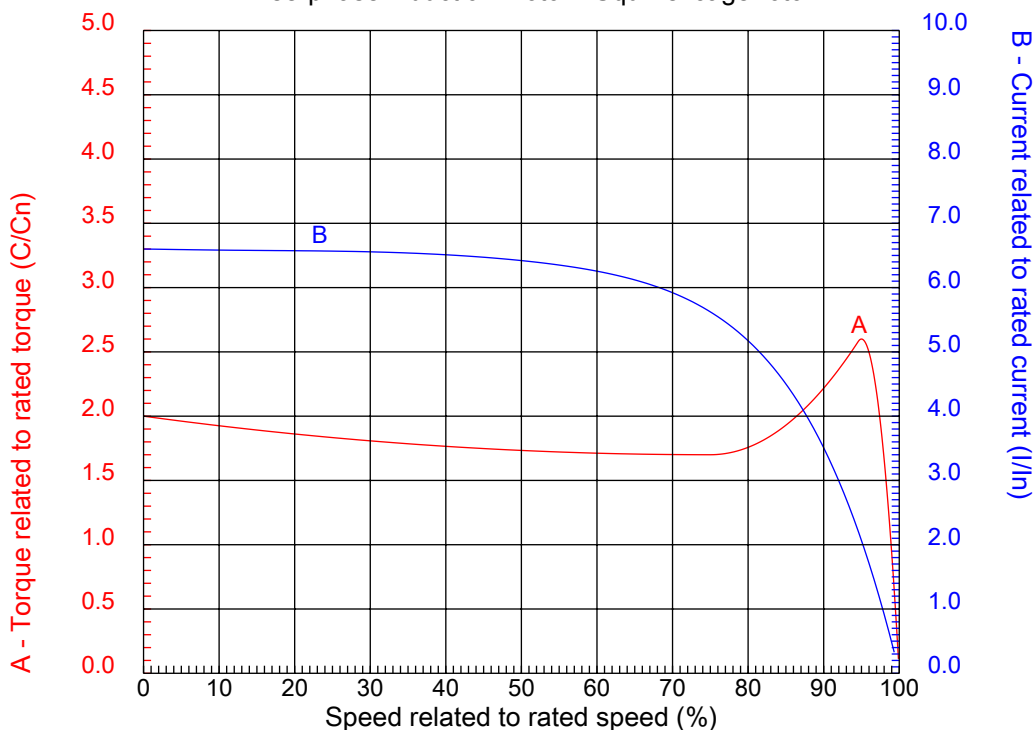
Checked



No.:

Date: 17-DEC-2012

CHARACTERISTIC CURVES RELATED TO SPEED Three-phase induction motor - Squirrel cage rotor



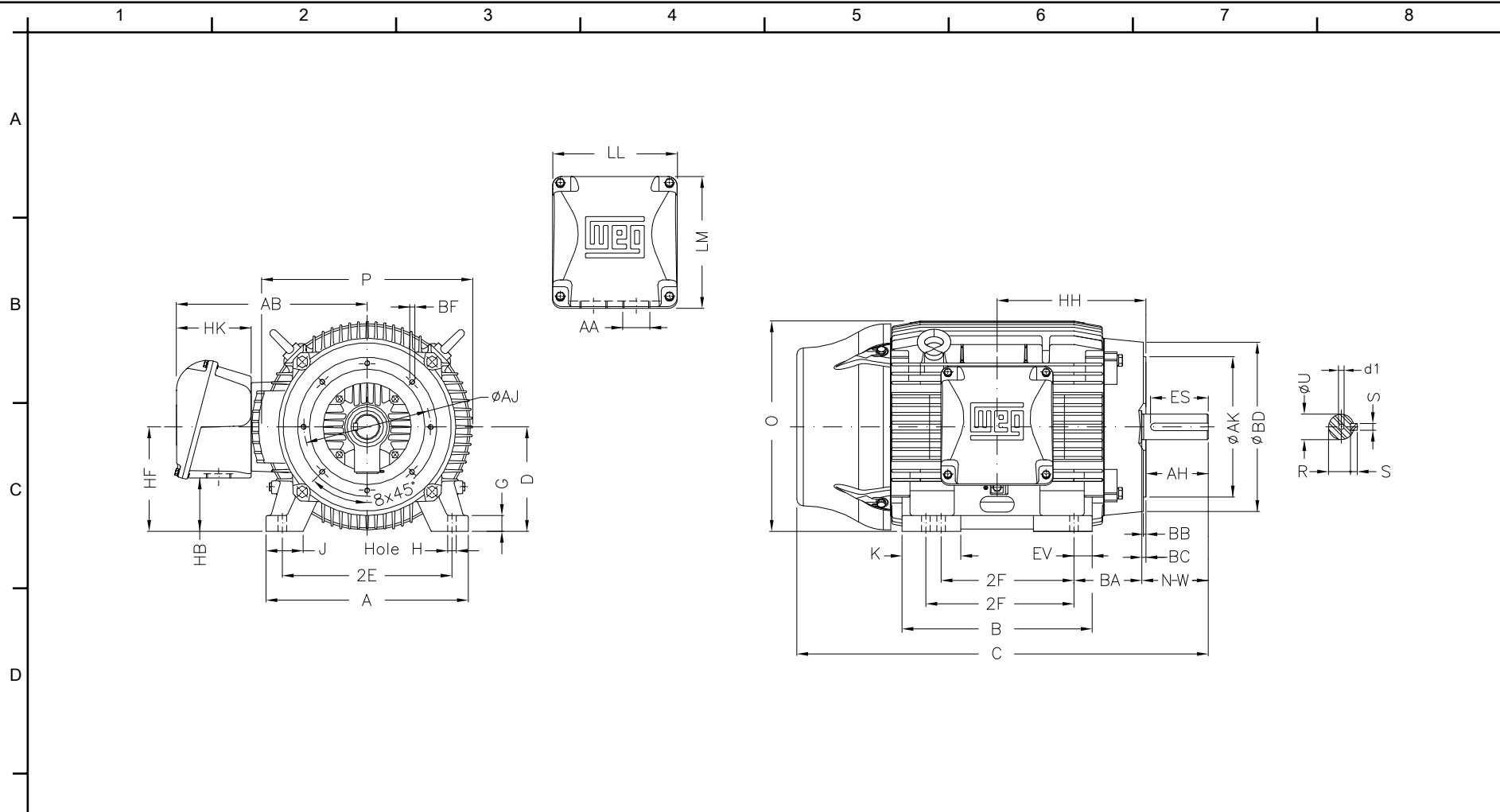
Customer :
Product line : W22 NEMA Premium - Ball Bearings

Frame	: 364/5TS	Locked rotor current (I _l /I _n)	: 6.6
Output	: 60 HP	Duty cycle	: S1
Frequency	: 60 Hz	Service factor	: 1.25
Full load speed	: 3560	Design	: B
Voltage	: 460 V	Locked rotor torque	: 200 %
Rated current	: 67.0 A	Breakdown torque	: 260 %
Insulation class	: F		

Notes:

Performed by

Checked



E	2E 14.016	J 3.150	A 17.165	P 17.914	AB 16.023
	2F 11.260/12.244	K 4.134	B 15.760	BA 5.875	U 1.875
	N-W 3.748	ES 1.968	S 0.500	R 1.591	depth 0.500
	D 9.000	G 1.480	HB 2.992	O 17.957	T 6.255
	HH 12.362	HK 6.023	H 0.660	C 32.276	LL 10.590
F	LM 11.181	AA NPT 3"	d1 DUNC 3/4"-10	d2 DUNC 3/4"-10	Flange FC-279
	AJ 11.000	AK 12.500	BD 15.55	BF UNC 5/8"x11	BB 0.250
	BC 0.250	AH 3.500			

Notes:		
Performed by:		
Checked:		
Customer:		
W22 NEMA Premium - Ball Bearings		
Three-phase induction motor Frame 364/5TS - IP55	17-DEC-2012	