

## ProMax® PLUS HIGH RECOVERY

### FEATURES

#### HIGHEST RECOVERIES AND FIRST HOUR RATINGS

Capacity/input combinations up to 98 gallons/75,100 BTUs produce recoveries up to 81 gallons per hour, with deliverable hot water up to 150 gallons.

#### DYNACLEAN™ DIFFUSER DIP TUBE

Helps reduce lime and sediment buildup, maximizes hot water output. Made from long lasting PEX cross-linked polymer.

#### GREEN CHOICE® GAS BURNER

Patented "Eco-Friendly" design reduces NOx emissions by up to 33% and complies with less than 40 ng/j requirements for NOx emissions.

#### COREGARD™ ANODE ROD

A.O. Smith's exclusive aluminum anode has a stainless steel core, protects tank against corrosion.

#### HEAT TRAP NIPPLES

Factory-installed on most models

#### PUSH-BUTTON PIEZO IGNITOR

Makes lighting pilot fast and easy with one-hand push-button spark ignition.

#### DURABLE, TAMPER-RESISTANT BRASS DRAIN VALVE

#### BLUE DIAMOND® GLASS COATING

Provides superior corrosion resistance compared to industry-standard glass lining.

#### THICK, "ENVIRONMENTALLY-FRIENDLY" NON CFC-FOAM INSULATION

Improves efficiency.

#### CSA CERTIFIED AND ASME RATED T&P RELIEF VALVE

Top-mounted T&P relief valve available as option.

#### CODE COMPLIANCE

Meets UBC, CEC, SBCC, HUD and BOCA National Codes. Meets the thermal efficiency and standby loss requirements of the U.S. Department of Energy and current edition of ASHRAE/IESNA 90.1 and meets the Federal Energy Efficiency Standards effective January 20, 2004, according to the National Appliance Energy Conservation Act (NAECA) of 1992.

#### DESIGN-CERTIFIED BY CSA INTERNATIONAL

According to ANSI Z21.10.1 - CSA 4.1 standards governing storage-type water heaters.

#### FLAMMABLE VAPOR IGNITION RESISTANT COMPLIANT DESIGN

See other side.

#### 6-YEAR LIMITED TANK AND PARTS WARRANTY

For complete information, consult written



### Series 100/101



Green Choice®  
The Eco-Friendly Gas-Fired Burner



# ProMax® + PLUS

### HIGH RECOVERY

MODEL NUMBER	SERIES	FIRST HOUR RATING (GPH)	GALLON CAPACITY	RECOVERY 90°F RISE PER HOUR	ENERGY FACTOR	BTU INPUT PER HOUR NATURAL †	R VALUE	DIMENSIONS (INCHES)						DRAFT HOOD OUTLET	APPROX. SHIPPING WEIGHT (LBS)
								A	B	C	D	E	F		
GCVT-40	300	75	40	51	0.60	50,000	16	61-3/4	58-1/4	20	13	8	51-3/4	4	138
GCVT-50	300	90	50	51	0.58	50,000	8	60-3/4	57	20	13	8	50-1/4	4	153
GCVX-50	100	93	50	67	0.58	65,000	16	63-7/8	59-1/2	22	15-1/2	8	54-1/8	4	195
GCV-65	100	116	65	67	0.57	65,000	16	65	60	24	15-1/2	8	54-1/4	4	215
FCG-75*	300	N/A	74	81	N/A	75,100	16	61	57	26-1/2	14-3/4	16	50-1/4	4	275
FCG-100*	300	N/A	98	81	N/A	75,100	10	68-1/2	65	27-3/4	15-3/16	16	57-3/8	4	350

Recovery capacity based on actual performance tests. Water Connections – 1" on 75-gallon model, 1-1/4" on 100-gallon model, 3/4" on all other models.

\* Not equipped with FVIR Technology. 75 and 100-gallon models have factory-installed (non-heat trap) nipples, 75-gallon model has 80% efficiency, 998 BTU/hr. standby loss; 100-gallon model has 80% efficiency, 1146 BTU/hr. standby loss.

† Propane Gas – GCVT-40: 45,000 BTU input; GCVT-50: 45,000 BTU input; GCVX-50: 55,000 BTU input; GCV-65: 62,500 BTU input.

For 10-Year Tank and 6-Year Parts Warranty, change "G" to "X" in Model Number (example: XCVT-40), or change "F" to "P" in model number (example: PCG-75).

The FVIR Series 100 models are certified from sea level to 7,700 ft. elevations. The FVIR Series 300 models are certified from sea level to 10,100 ft. elevations.

The 75 & 100-gallon models are certified to 7,700 ft. elevations.

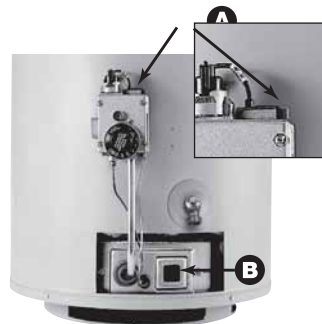
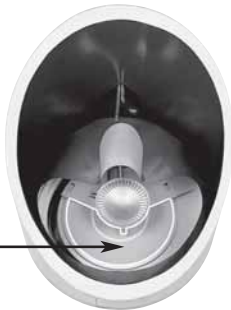
## Flammable Vapor Ignition Resistant FVIR Water Heaters

FVIR design meets American National Standards Institute standards (ANSI Z21.10.1 - 4.1 CSA Standards) that deal with the accidental or unintended ignition of flammable vapors, such as those emitted by gasoline.

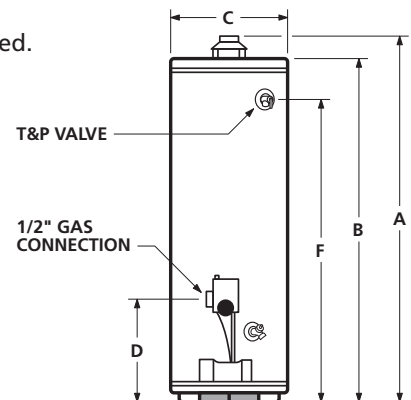
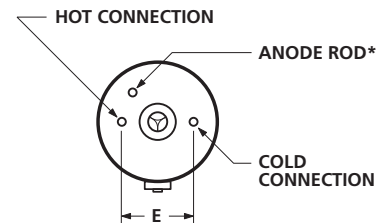
FVIR gas water heaters feature a sealed combustion chamber with air intake screen and a fireproof Corderite flame arrester built into the water heater base.

In addition, a thermal cutoff (TCO) device, integral with the thermocouple, is designed to shut off gas flow to the burner and pilot if poor combustion is detected.

If flammable vapors accidentally enter the combustion chamber, the Corderite flame arrester is designed so flames burn off the top surface and cannot escape down through the arrester.



**A.** Easy-to-light piezo ignitor  
**B.** View port for easy burner inspection inside sealed combustion chamber



\*Location for optional top-mounted T&P Valve if ordered from factory. (FVIR models only)