

SPEAKMAN®

AL3-C1D2

ALARM SYSTEM

DESCRIPTION

Emergency equipment alarm with electric horn and rotating light activated by a vapor proof flow switch. Unit is also equipped with a silencing toggle switch. Alarm unit meets indoor / outdoor hazardous location requirements for Class 1, Division 2 Groups C, D electrical classification.

SPECIFICATIONS

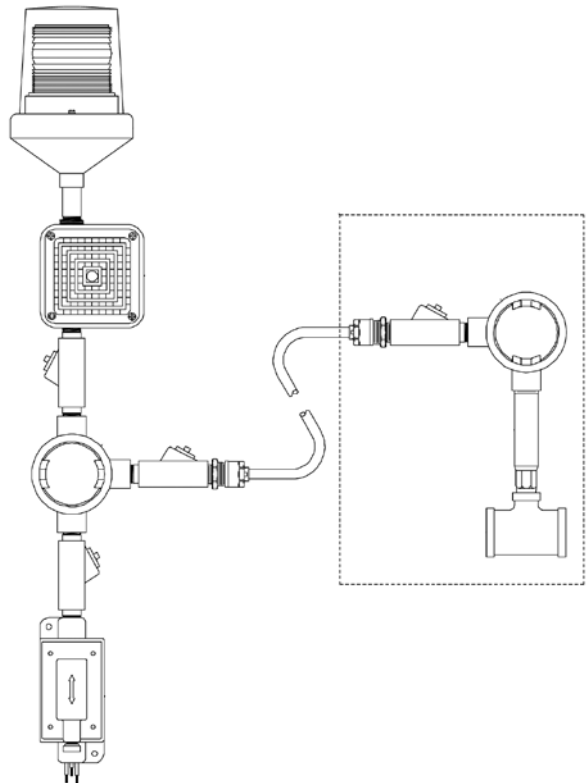
- Activator:** 3/4" Vapor Proof Flow Switch
- Horn:** 100dB @ 10 Ft.
- Light:** 25 watt incandescent bulb
- Shipping Weight:** 21 lb.

Electrical Data:

Electrical Supply: 120 VAC, 60 Cycle, Single Phase.
 Electrical rating: 5.5 Amps @ 120 VAC.

Compliance: Unit rated for NEMA 4 indoor/outdoor hazardous locations (Cl. 1, Div. 2, Groups C,D).

*Power supply to be in compliance with (N.E.C.) National Electric Code.



OPTIONS

- DPDT Double pole, double throw flow switch for remote locations
- Blue Dome
- Red Dome
- Clear Dome
- Green Dome

Job Name _____	
Location _____	
Architect/Engineer _____	
Sales Representative _____	
Wholesaler _____	
Date _____	Model # _____