

BALDOR

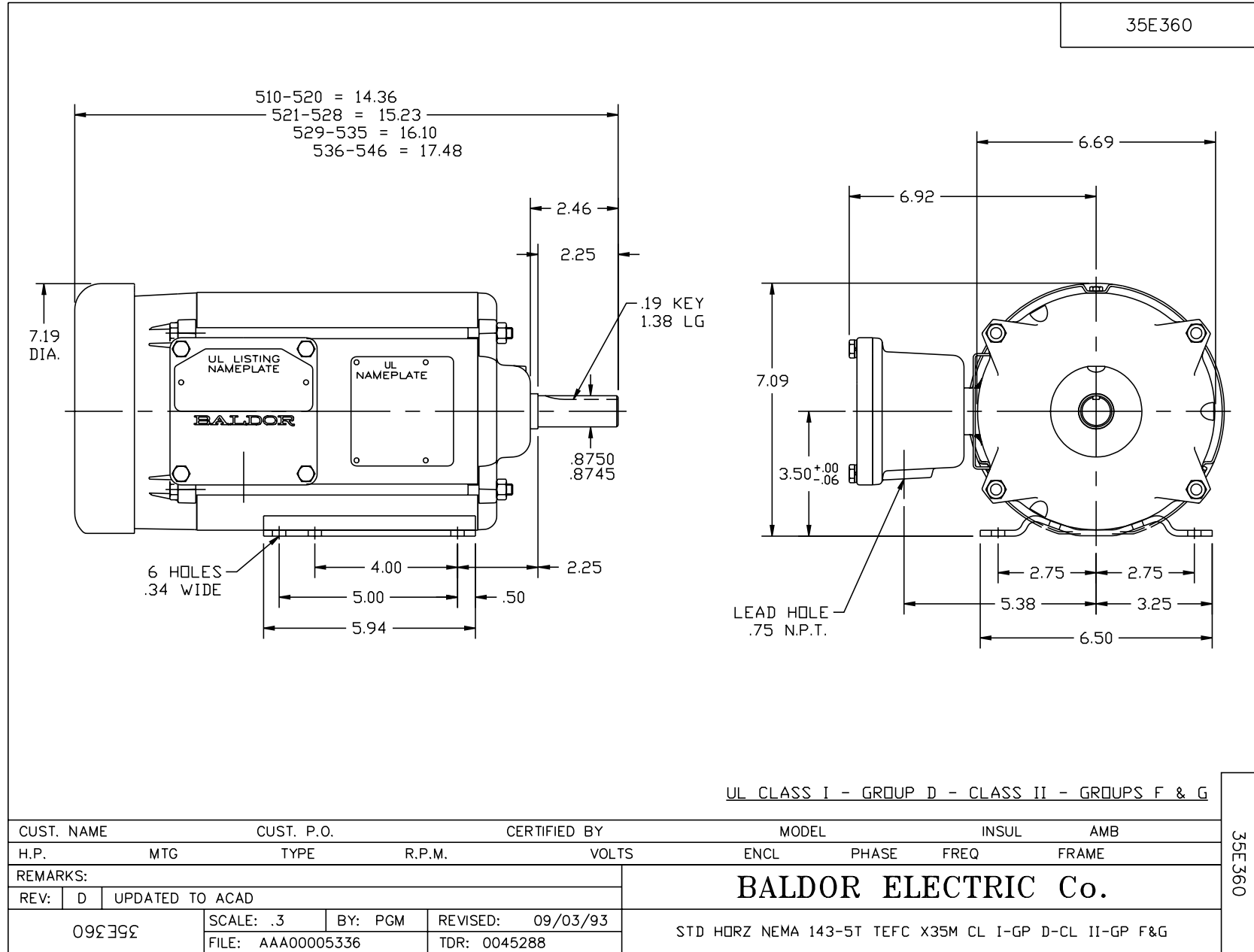
BALDOR® • RELIANCE

Product Information Packet

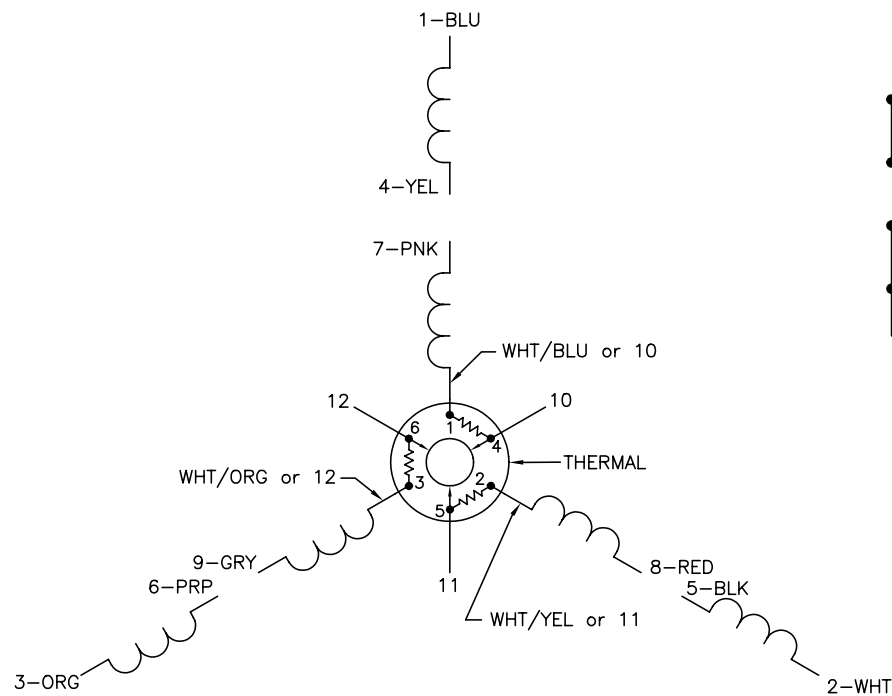
M7031TA

.75HP, 1140RPM, 3PH, 60HZ, 143T, X3524M, XPFC

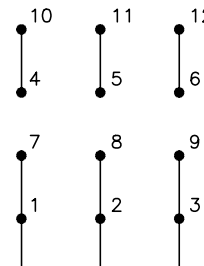
Part Detail							
Revision:	W	Status:	PRD/A	Change #:		Proprietary:	No
Type:	AC	Prod. Type:	3524M	Elec. Spec:	35WGY025	CD Diagram:	
Enclosure:	XPFC	Mfg Plant:		Mech. Spec:	35E360	Layout:	
Frame:	143T	Mounting:	F1	Poles:	06	Created Date:	
Base:	RG	Rotation:	R	Insulation:	B	Eff. Date:	12-03-2009
Leads:	12#18	Literature:		Elec. Diagram:		Replaced By:	
Nameplate NP0016XP							
NO.				CC			
SER.							
SPEC.		35E360Y25					
CAT.NO.							
HP	.75			T. CODE		T4	
VOLTS	208-230/460						
AMPS	3-2.8/1.4						
RPM	1140						
HZ	60			PH	3	CL	B
SER.F.	1.00			DES	B	CODE	K
RATING	40C AMB-CONT						
FRAME	143T			NEMA-NOM-EFF	77	PF	63
USABLE AT 208V	3						



CD0007

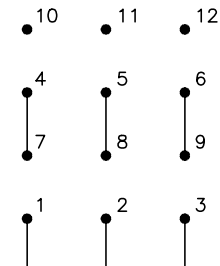


LOW VOLTAGE
(2Y)



LINE

HIGH VOLTAGE
(1Y)



LINE

NOTES:

1. INTERCHANGE ANY TWO LINE LEADS TO REVERSE ROTATION.
2. ACTUAL NUMBER OF INTERNAL PARALLEL CIRCUITS MAY VARY.
3. LEAD COLORS ARE OPTIONAL. LEADS MUST ALWAYS BE NUMBERED AS SHOWN.

REV. DESC: ADDED "CK" PLANT CODE			
REV. LTR: E	BY: EAH	REVISED: 05/06/99 17:1	TDR: 0181040
L00000		FILE: AAA00008370	MDL: -
		MTL: -	

BALDOR ELECTRIC Co.

3PH, DV, THERMAL, 12 LEADS

CD0007