

excelsior 350

specifications

Overall Dimensions

30" x 30.5" x 42-45.5"
(W x D x H)

Seat

22.8" x 21" (W x D)

Back

22" x 23.5" (W x H)

Seat Height

20" (at lowest point)
23.5" (at highest point)

Weight

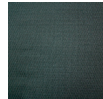
70 lbs

Cube

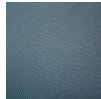
8.2

standard colors

dove black
5806



dove charcoal
5801



features

Tilt Tension Control

Recline rate adapts to weight of user.

Center-Tilt

Chair tilts from a point under the center of the seat allowing user to rock back and forth. Tension adjustable.

Tilt Lock

Locks out tilt function.

Width Adjustable Arms

Adjusts arms in or out for proper ergonomic positioning.

Arm Height Adjustment

Adjusts arm up or down for proper ergonomic positioning while seated.

350 lb weight capacity



BM9000
\$621



eurotech
a raynor group company

1.800.637.0005

email: customerservice@raynorgroup.com
catalog requests: literature@raynorgroup.com