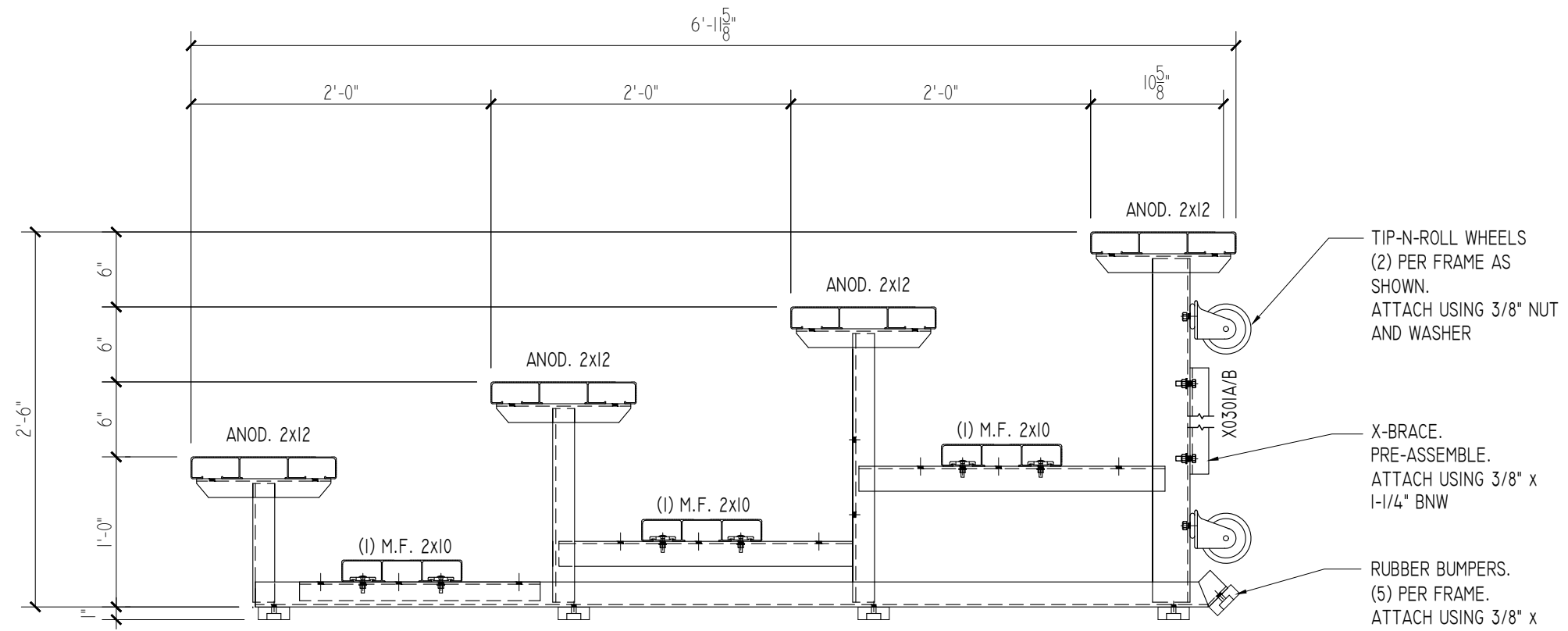


### SEATING PLAN

SCALE: 3/8"=1'-0"

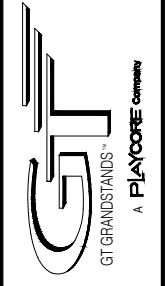
NET SEATS = 40



### TYPICAL SECTION THRU BLEACHER

SCALE: 1"=1'-0"

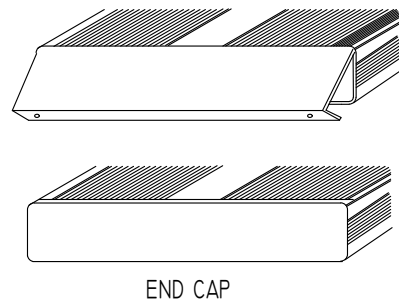
2810 Sydney Road  
Plant City, Florida 33566  
Phone: 813-305-1415  
Fax: 813-305-1419  
www.gtgrandstands.com



PLAN AND SECTION  
4 ROW - TIP-N-ROLL  
6" RISE / 12" SEATS

LU-0415AS-TR AND LU-0415GS-TR  
UNIVERSAL SERIES BLEACHER

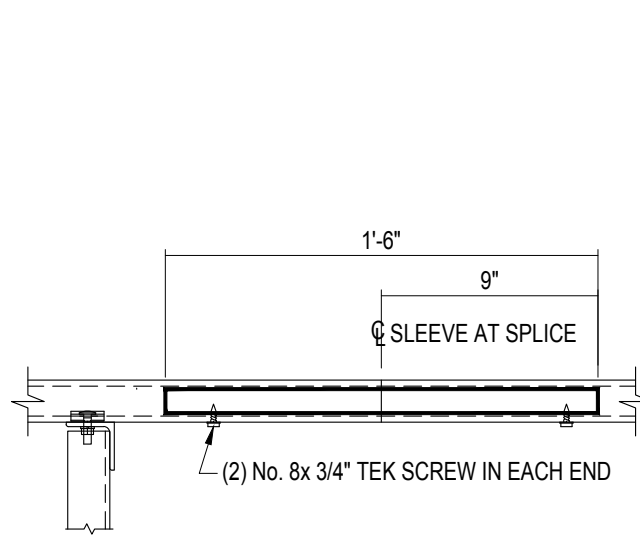
DRAWN BY  
CHECKED BY  
DATE  
APRIL 2010  
SCALE  
NOTED  
JOB NO.  
LU-0415AS-TR  
LU-0415GS-TR  
DWG NO.



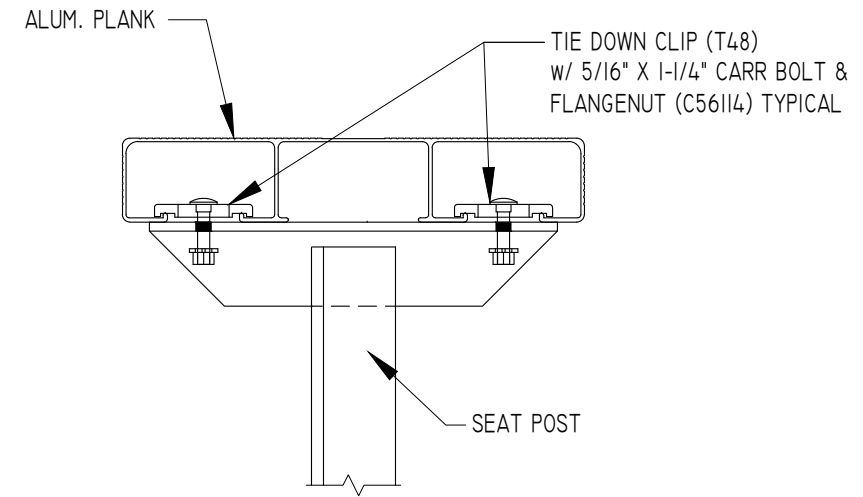
1. LOCATE THE CHANNEL END CAP AS SHOWN, WITH THE WIDER FLANGE ON BOTTOM.
2. TAP THE CHANNEL INTO PLACE WITH A RUBBER Mallet OR SOFT WOOD.
3. DRILL (2) No.8 x 3/4" TEK SCREWS THRU END CAP AND BOTTOM FLANGE OF PLANK
4. ENDCAPS WITH STICKERS ARE TO GO AT ENDS OF SEAT PLANKS, PLAIN ENDCAPS GO ON ALL OTHER BOARDS.

### ENDCAP INSTALLATION DETAIL

SCALE: 3" = 1'-0"

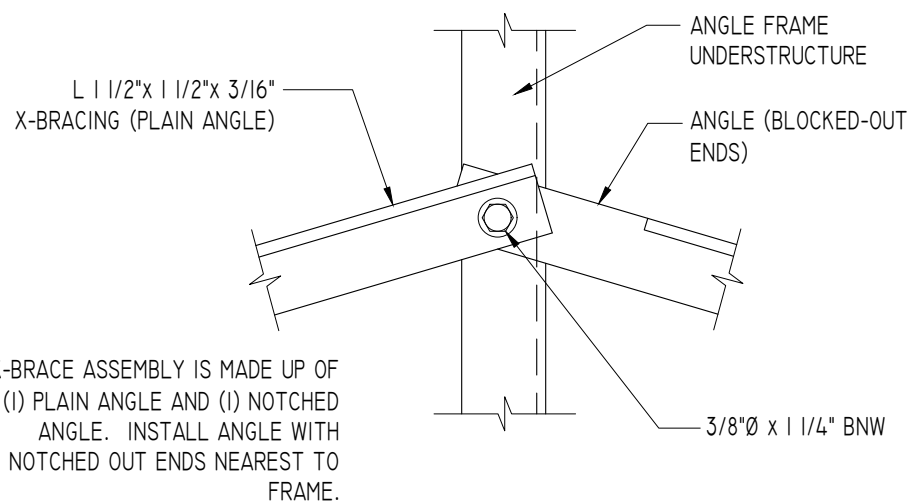


### ALUMINUM SLEEVE DETAIL



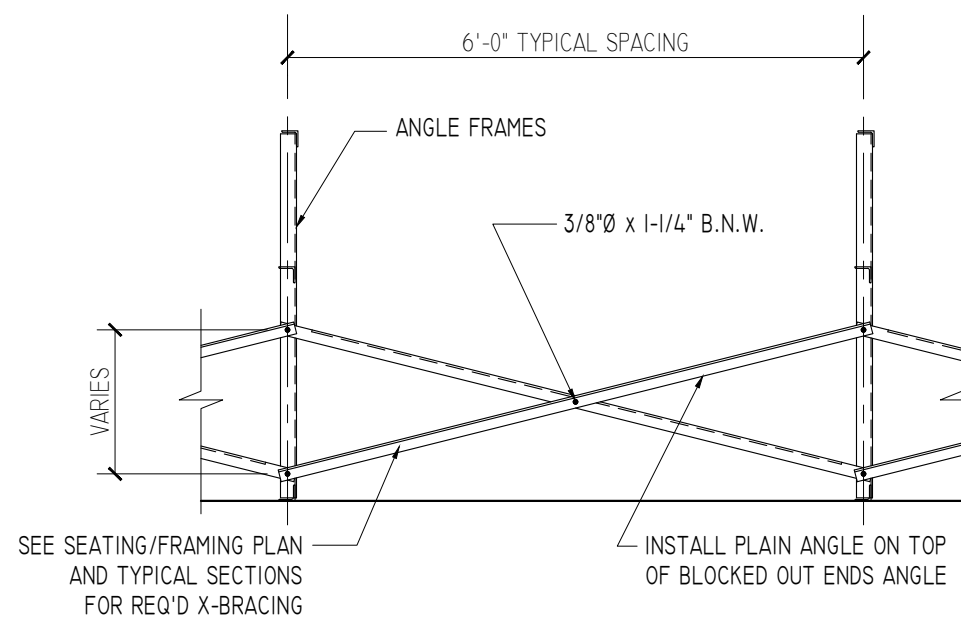
### SEAT PLANK INSTALLATION

SCALE: 3" = 1'-0"



### TYPICAL X-BRACE TO FRAME CONN.

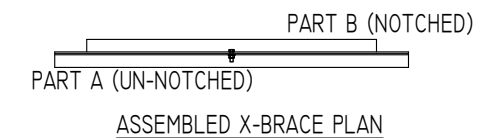
SCALE: 3" = 1'-0"



### TYPICAL BRACING LAYOUT

SCALE: 1/2" = 1'-0"

PRE-ASSEMBLE X-BRACE SETS. EACH SET CONSISTS OF A 'PART A (UN-NOTCHED)' AND A 'PART B (NOTCHED)'. PLACE THE PIECES TOGETHER AT THE FLAT SIDES AND CONNECT USING A 3/8" x 1-1/4" B.N.W.



LU-04xxAS-TR AND LU-04xxGS-TR  
UNIVERSAL SERIES BLEACHER

DETAILS  
4 ROW - TIP-N-ROLL  
6" RISE / 12" SEATS

2810 Sydney Road  
Plant City, Florida 33566  
Phone: 813-305-1415  
Fax: 813-305-1419  
www.gtgrandstands.com

**GT**  
GT GRANDSTANDS  
A PLAYCORE COMPANY

DRAWN BY  
CHECKED BY  
DATE  
FEB 2010  
SCALE  
NOTED  
JOB NO.  
LU-04xxAS-TR  
LU-04xxGS-TR  
DWG NO.