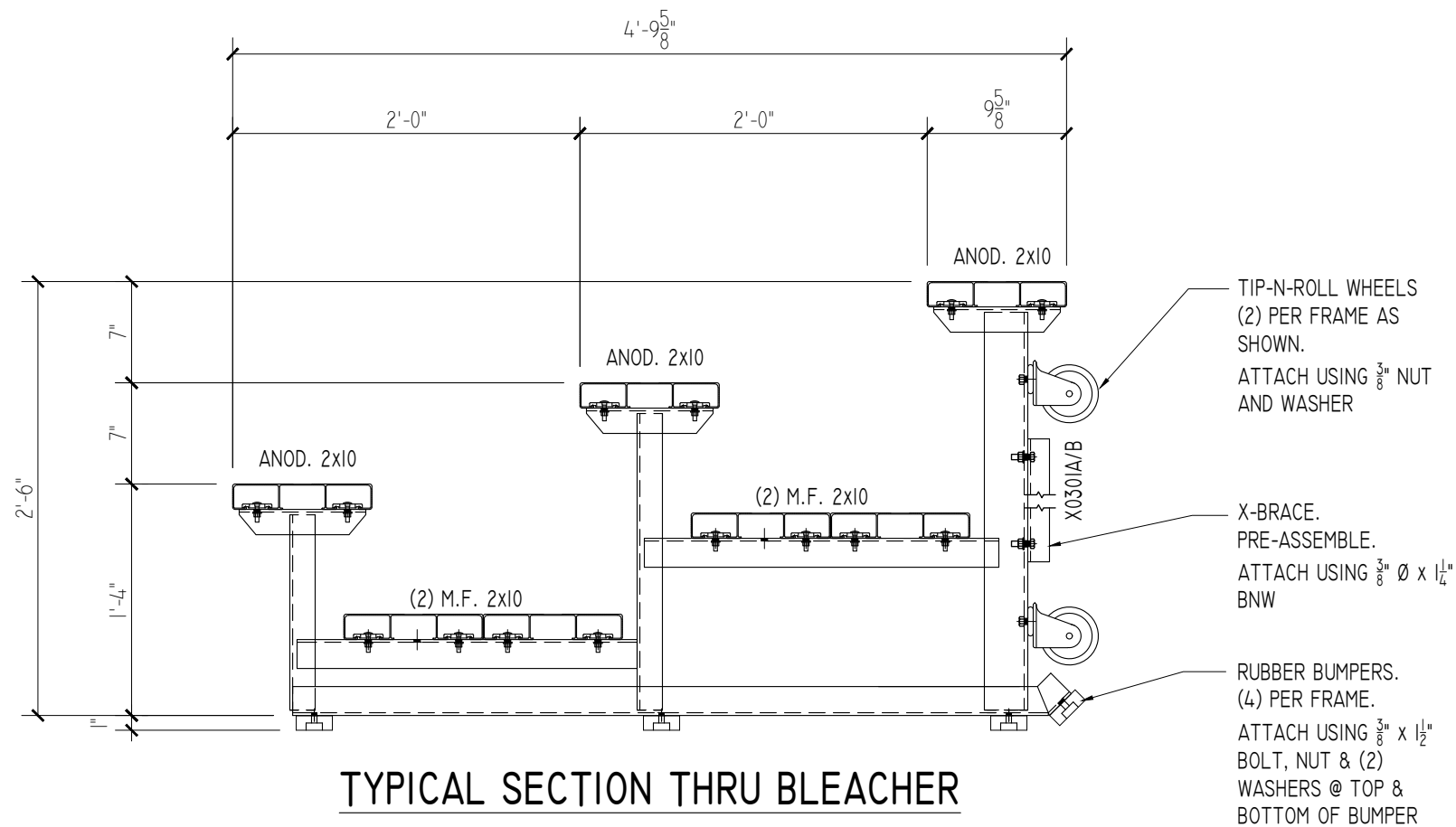


### SEATING PLAN

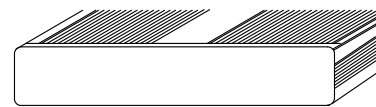
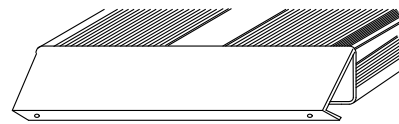
SCALE: 3/8"=1'-0"

NET SEATS = 30



### TYPICAL SECTION THRU BLEACHER

SCALE: 1"=1'-0"

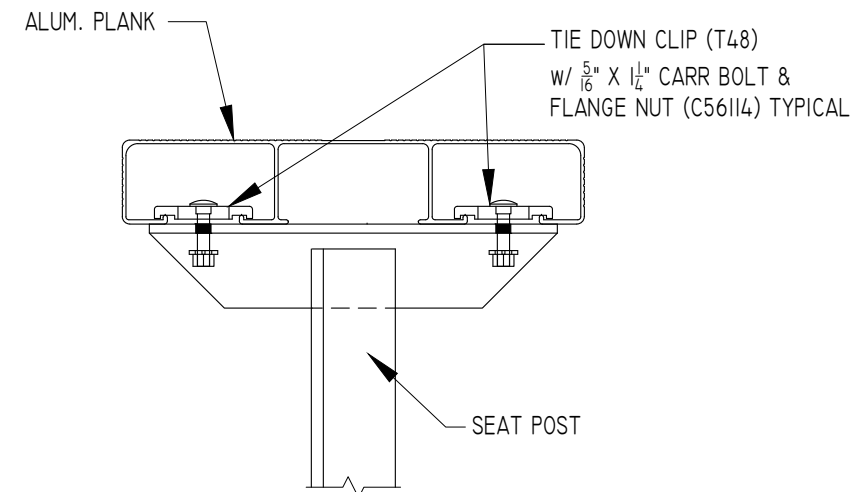


END CAP

1. LOCATE THE CHANNEL END CAP AS SHOWN, WITH THE WIDER FLANGE ON BOTTOM.
2. TAP THE CHANNEL INTO PLACE WITH A RUBBER Mallet OR SOFT WOOD.
3. DRILL (2) No.8 x  $\frac{3}{4}$ " TEK SCREWS THRU END CAP AND BOTTOM FLANGE OF PLANK
4. ENDCAPS WITH STICKERS ARE TO GO AT ENDS OF SEAT PLANKS, PLAIN ENDCAPS GO ON ALL OTHER BOARDS.

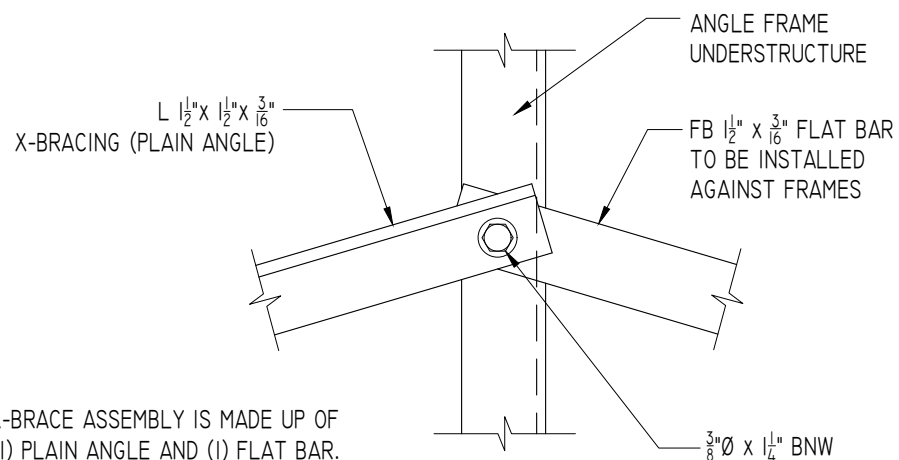
### ENDCAP INSTALLATION DETAIL

SCALE: 3" = 1'-0"



### SEAT PLANK INSTALLATION

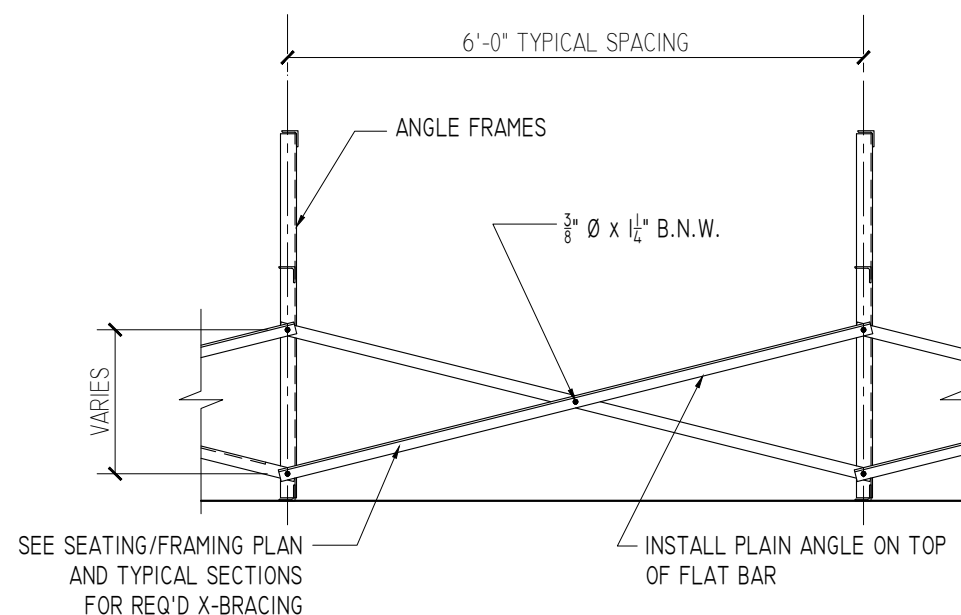
SCALE: 3" = 1'-0"



X-BRACE ASSEMBLY IS MADE UP OF (1) PLAIN ANGLE AND (1) FLAT BAR. INSTALL FLAT BAR NEAREST TO FRAME.

### TYPICAL X-BRACE TO FRAME CONN.

SCALE: 3" = 1'-0"



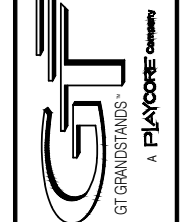
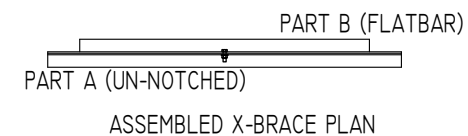
SEE SEATING/FRAMING PLAN AND TYPICAL SECTIONS FOR REQ'D X-BRACING

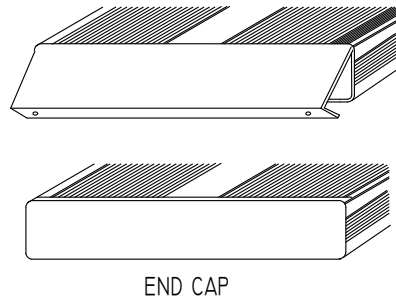
INSTALL PLAIN ANGLE ON TOP OF FLAT BAR

### TYPICAL BRACING LAYOUT

SCALE: 1/2" = 1'-0"

PRE-ASSEMBLE X-BRACE SETS. EACH SET CONSISTS OF A 'PART A (UN-NOTCHED)' AND A 'PART B (FLAT BAR)'. PLACE THE PIECES TOGETHER AT THE FLAT SIDES AND CONNECT USING A  $\frac{3}{8}$ "  $\varnothing$  x  $\frac{1}{4}$ " B.N.W.





1. LOCATE THE CHANNEL END CAP AS SHOWN, WITH THE WIDER FLANGE ON BOTTOM.

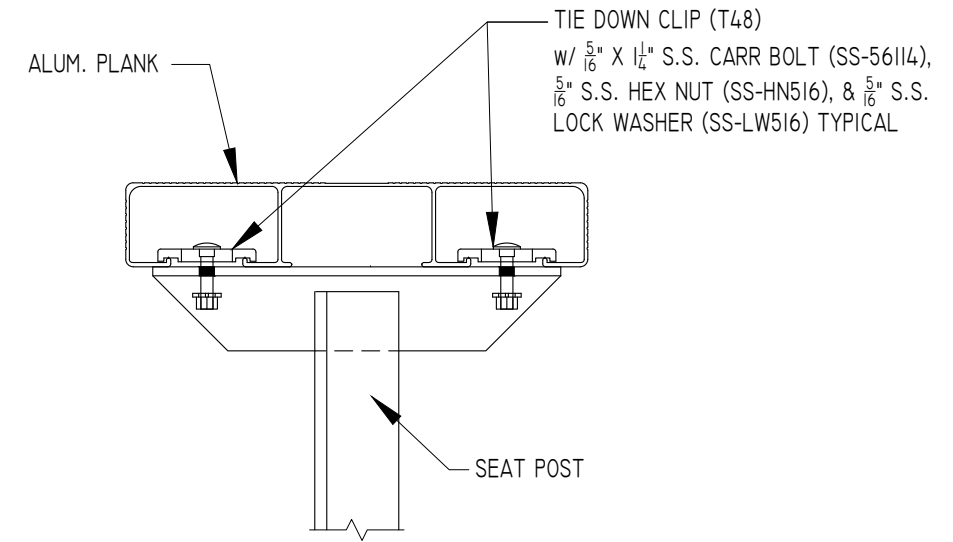
2. TAP THE CHANNEL INTO PLACE WITH A RUBBER Mallet OR SOFT WOOD.

3. DRILL (2)  $\frac{3}{16}$ "  $\varnothing$  HOLES THRU END CAP AND BOTTOM FLANGE OF PLANK. USE  $\frac{3}{16}$ " x  $\frac{1}{4}$ " ALUM. POP RIVETS TO FASTEN END CAPS TO PLANK.

4. END CAPS WITH STICKERS ARE TO GO AT ENDS OF SEAT PLANKS, PLAIN END CAPS GO ON ALL OTHER BOARDS.

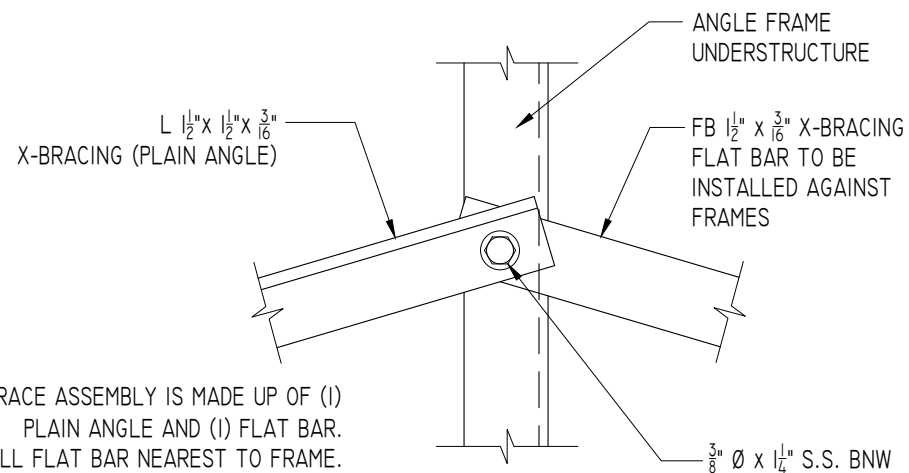
### ENDCAP INSTALLATION DETAIL

SCALE: 3" = 1'-0"



### SEAT PLANK INSTALLATION

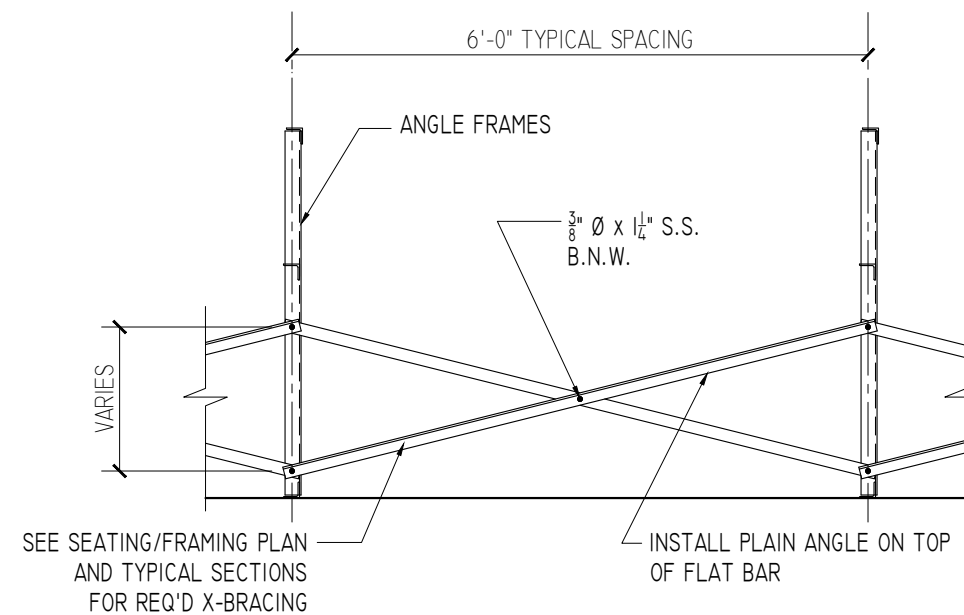
SCALE: 3" = 1'-0"



X-BRACE ASSEMBLY IS MADE UP OF (1) PLAIN ANGLE AND (1) FLAT BAR. INSTALL FLAT BAR NEAREST TO FRAME.

### TYPICAL X-BRACE TO FRAME CONN.

SCALE: 3" = 1'-0"



SEE SEATING/FRAMING PLAN AND TYPICAL SECTIONS FOR REQ'D X-BRACING

### TYPICAL BRACING LAYOUT

SCALE: 1/2" = 1'-0"

PRE-ASSEMBLE X-BRACE SETS. EACH SET CONSISTS OF A 'PART A (UN-NOTCHED)' AND A 'PART B (FLAT BAR)'. PLACE THE PIECES TOGETHER AND CONNECT USING A  $\frac{3}{8}$ "  $\varnothing$  x  $\frac{1}{4}$ " STAINLESS STEEL B.N.W.

