

SEATING PLAN

SCALE: 3/8"=1'-0"

NET SEATS = 70

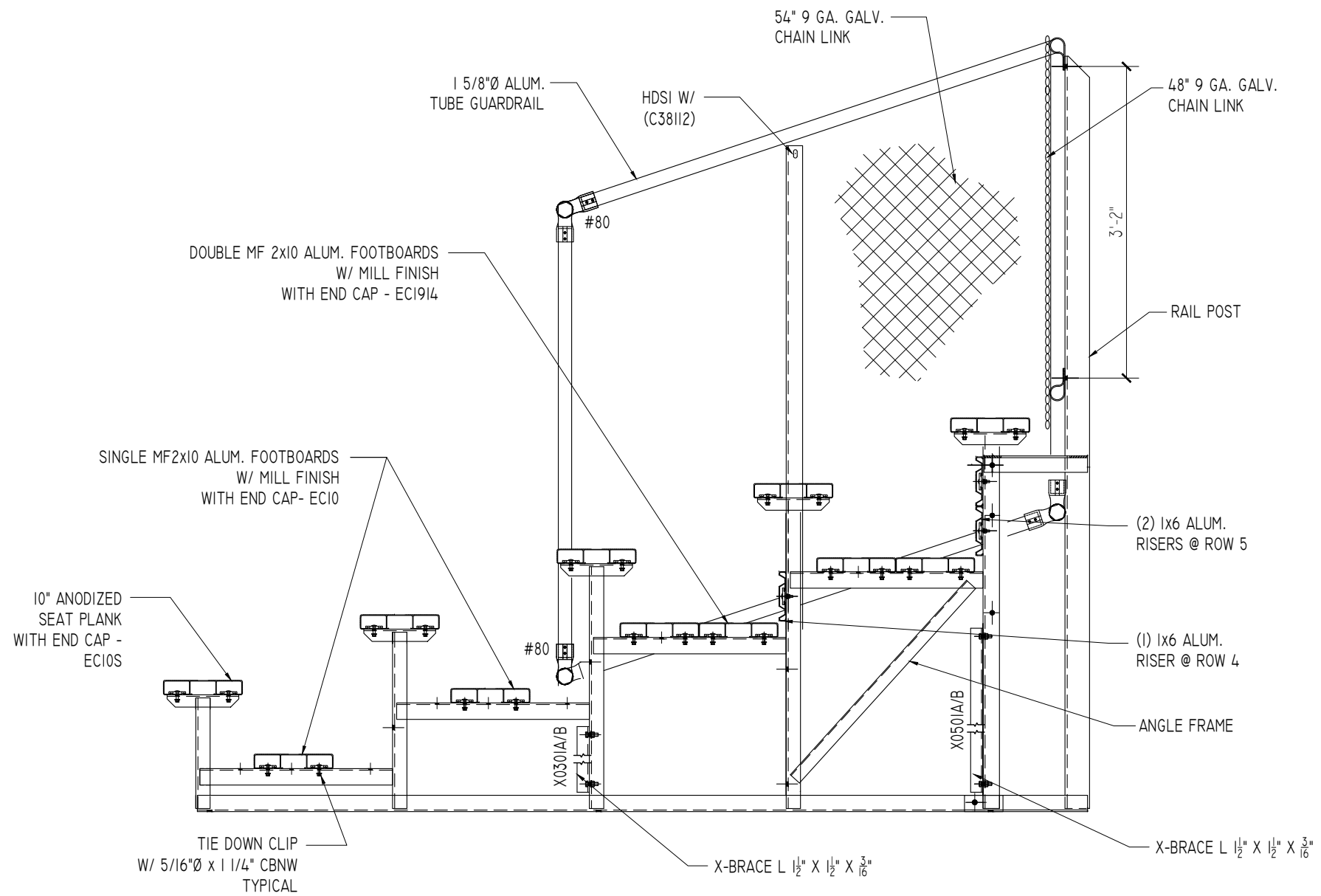
2810 Sydney Road
Plant City, Florida 33566
Phone: 813-305-1415
Fax: 813-305-1419
www.gtgrandstands.com



SEATING PLAN
5 ROW BLEACHER

NR-052IAMC AND NR-052IGMC
OPTIONAL -MS (MUD SILLS)

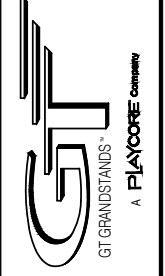
DRAWN BY
CHECKED BY
DATE
FEB 2010
SCALE
NOTED
JOB NO.
NR-052IAMC
NR-052IGMC
DWG NO.



TYPICAL SECTION THRU BLEACHER

SCALE: 3/4"=1'-0"

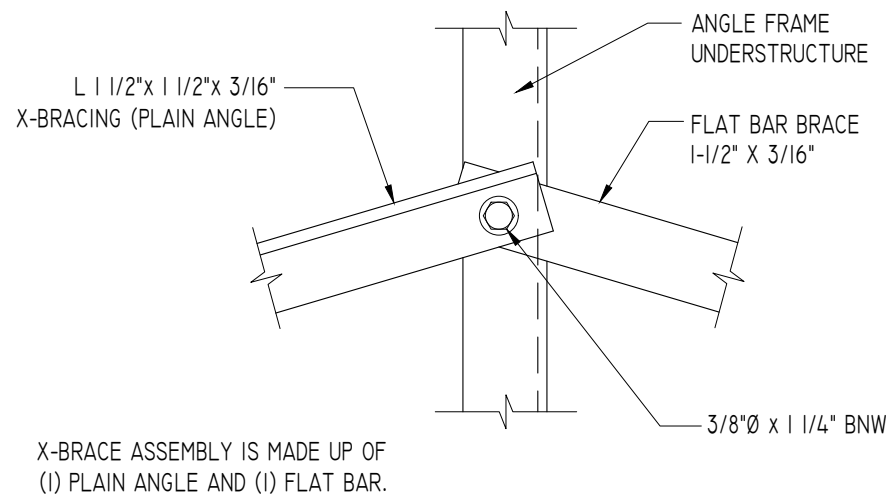
2810 Sydney Road
 Plant City, Florida 33566
 Phone: 813-305-1415
 Fax: 813-305-1419
 WWW: gtgrandstands.com



SECTION THRU
 5 ROW BLEACHER

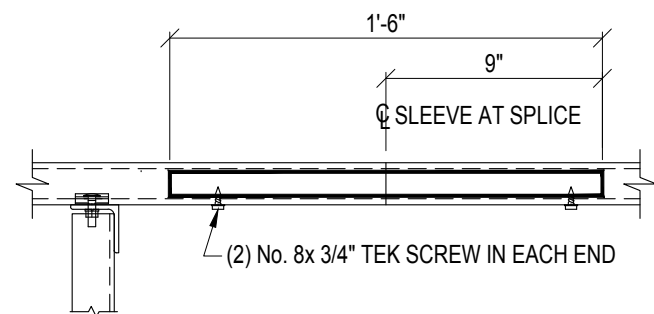
NR-05XXAMC AND NR-05XXGMC
 OPTIONAL -MS (MUD SILLS)

DRAWN BY
CHECKED BY
DATE FEB 2010
SCALE NOTED
JOB NO. NR-05XXAMC NR-05XXGMC
DWG NO.

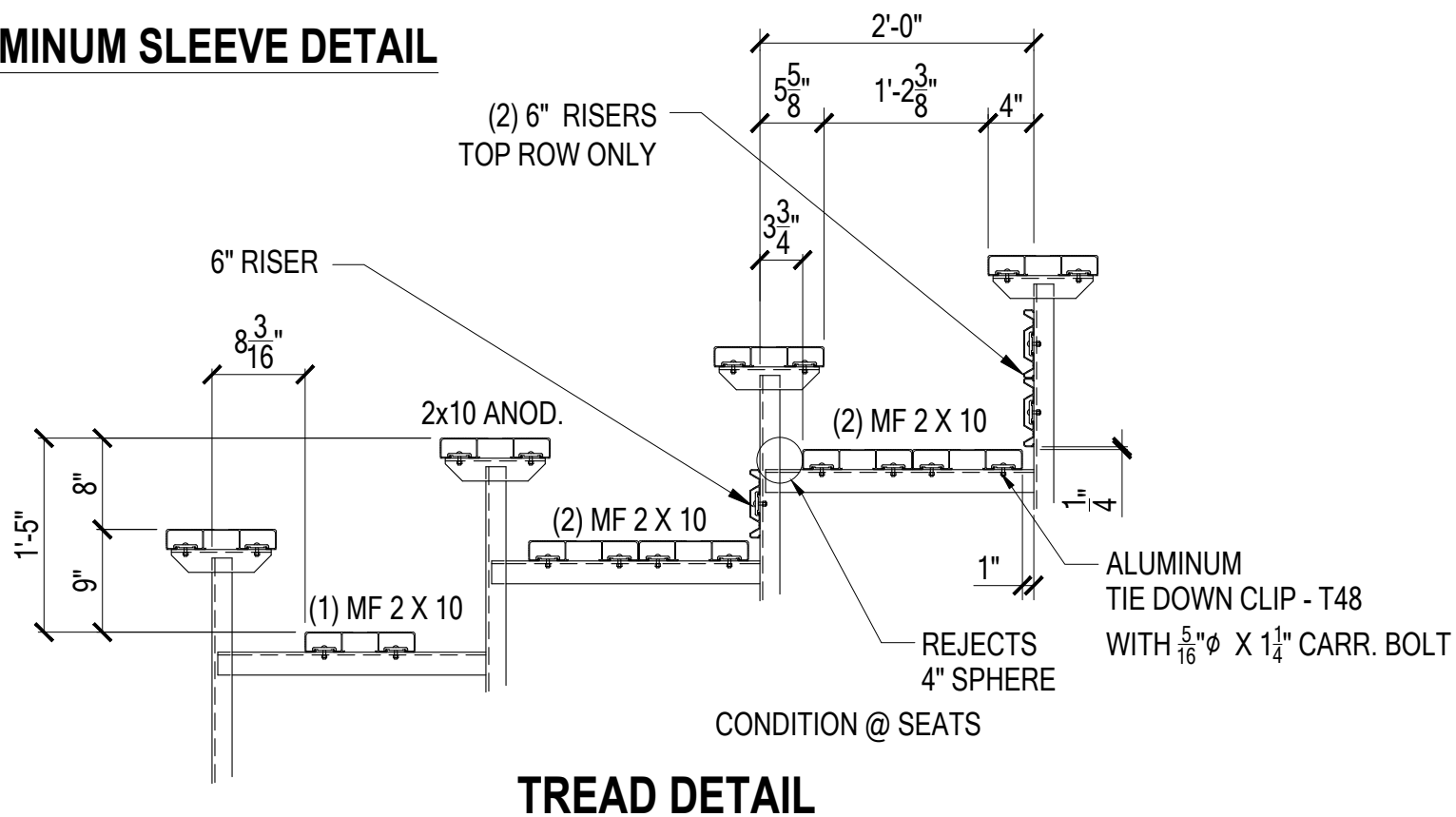


TYPICAL X-BRACE TO FRAME CONN.

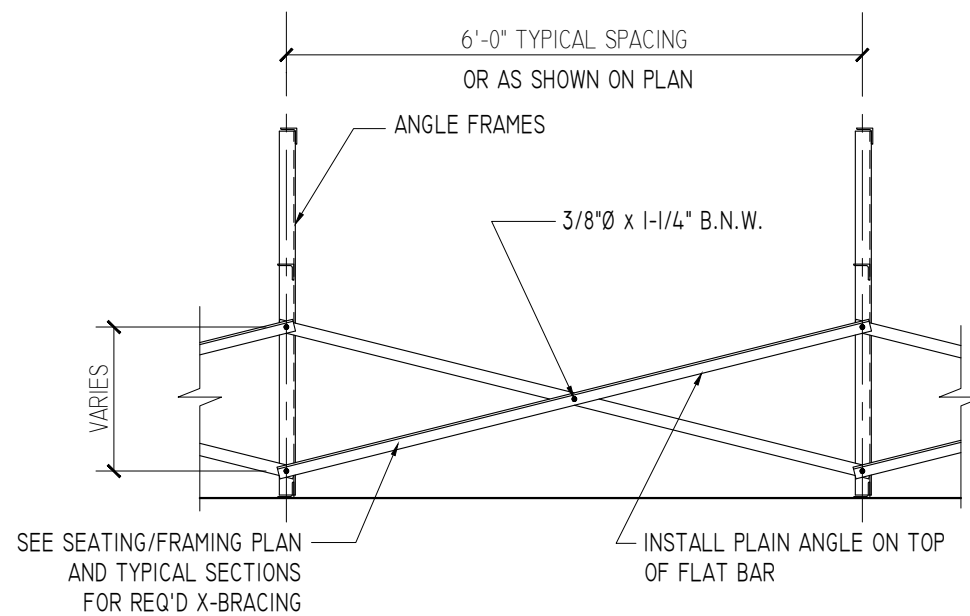
SCALE: 3" = 1'-0"



ALUMINUM SLEEVE DETAIL



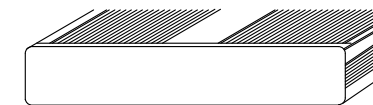
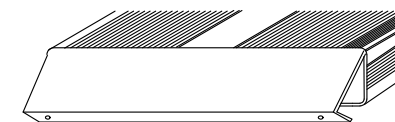
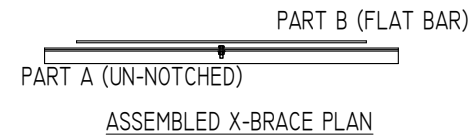
TREAD DETAIL



TYPICAL BRACING LAYOUT

SCALE: 1/2" = 1'-0"

PRE-ASSEMBLE X-BRACE SETS. EACH SET CONSISTS OF A 'PART A (PLAIN ANGLE)' AND A 'PART B (FLAT BAR)'. PLACE THE PIECES TOGETHER AT THE FLAT SIDES AND CONNECT USING A 3/8" x 1-1/4" B.N.W.

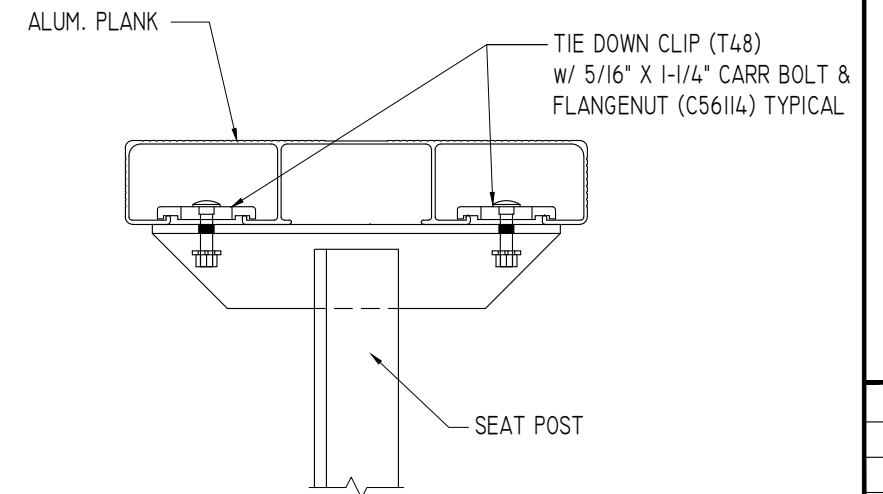


END CAP

1. LOCATE THE CHANNEL END CAP AS SHOWN, WITH THE WIDER FLANGE ON BOTTOM.
2. TAP THE CHANNEL INTO PLACE WITH A RUBBER Mallet OR SOFT WOOD.
3. DRILL (2) No.8 x 3/4" TEK SCREWS THRU END CAP AND BOTTOM FLANGE OF PLANK
4. ENDCAPS WITH STICKERS ARE TO GO AT ENDS OF SEAT PLANKS, PLAIN ENDCAPS GO ON ALL OTHER BOARDS.

ENDCAP INSTALLATION DETAIL

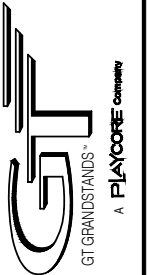
SCALE: 3" = 1'-0"



SEAT PLANK INSTALLATION

SCALE: 3" = 1'-0"

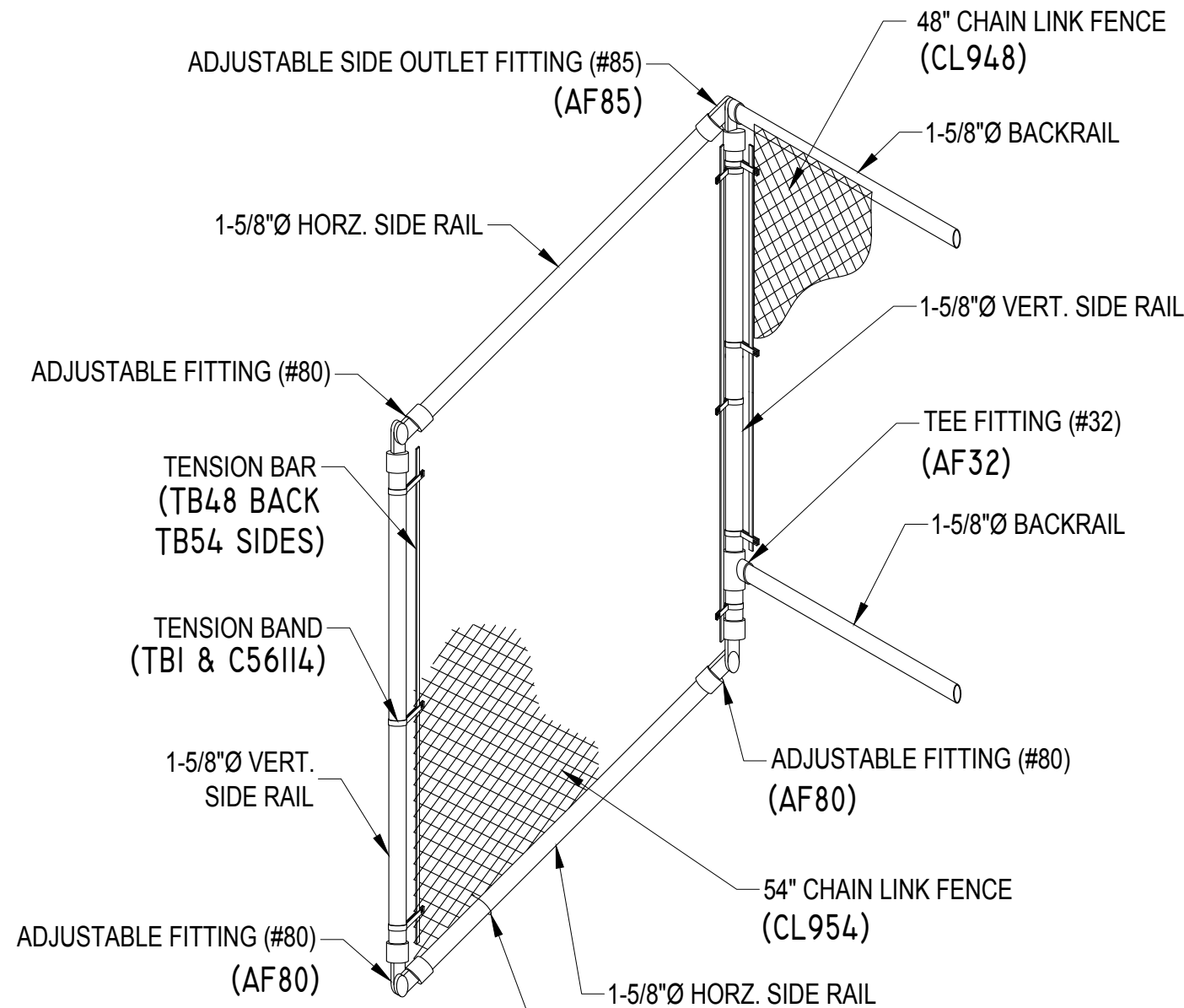
2810 Sydney Road
Plant City, Florida 33566
Phone: 813-305-1415
Fax: 813-305-1419
www.gtgrandstands.com



TYPICAL DETAILS
5 ROW BLEACHER

NR-05XXAMC AND NR-05XXGMC
OPTIONAL -MS (MUD SILLS)

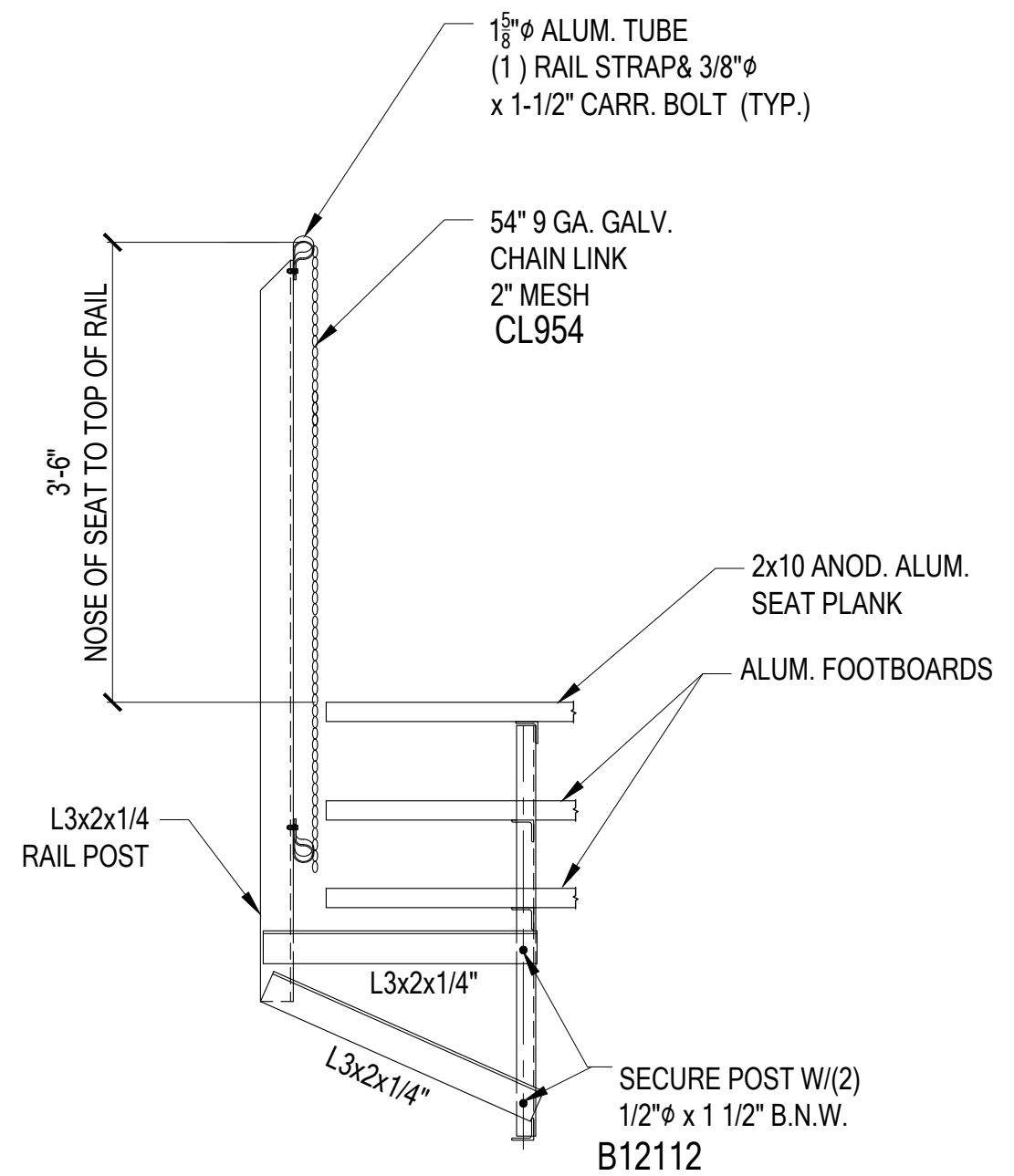
DRAWN BY
CHECKED BY
DATE FEB 2010
SCALE NOTED
JOB NO. NR-05XXAMC NR-05XXGMC
DWG NO.



CAUTION:
PARTS "HDSI" (1" WIDE) AND "TB1"
(3/8" WIDE) ARE SIMILAR - CARE
SHOULD BE TAKEN TO IDENTIFY
THESE PARTS CORRECTLY.

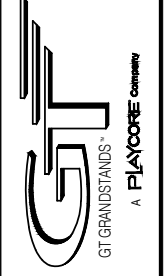
ALUMINUM TIE WIRE (ATW1) MAX 6" FROM
TENSION BAR AND MAX 12" O.C. STAGGERED
TOP AND BOTTOM RAILS (TYP)

ISOMETRIC VIEW
CONNECTION DETAIL OF BACK RAIL TO SIDE RAIL



RAIL POST CONNECTION DETAIL

2810 Sydney Road
Plant City, Florida 33566
Phone: 813-305-1415
Fax: 813-305-1419
www.gtgrandstands.com



CHAINLINK GUARDRAIL
5 ROW BLEACHER

NR-05XXAMC AND NR-05XXGMC
OPTIONAL -MS (MUD SILLS)

DRAWN BY
CHECKED BY
DATE FEB 2010
SCALE NOTED
JOB NO. NR-05XXAMC NR-05XXGMC
DWG NO.