



No.:

Date: 28-DEC-2012

Customer :

TECHNICAL PROPOSAL

Single-phase induction motor - Squirrel cage rotor

Product line : Farm Duty Motors : TEFC (IP55) - Single-Phase

Catalog Number : .5018ES1RFDB56

List Price : \$308

Notes:

Performed by:

Checked:



No.:

Date: 28-DEC-2012

DATA SHEET

Single-phase induction motor - Squirrel cage rotor

Customer :
Product line : Farm Duty Motors : TEFC (IP55) - Single-Phase

Frame : B56
Output : 0.5 HP
Frequency : 60 Hz
Poles : 4
Full load speed : 1750
Slip : 2.78 %
Voltage : 115/230 V
Rated current : 7.40/3.70 A
Locked rotor current : 42.9/21.5 A
Locked rotor current (I_L/I_n) : 5.8
No-load current : 5.60/2.80 A
Full load torque : 1.48 lb.ft
Locked rotor torque : 290 %
Breakdown torque : 270 %
Design : ---
Insulation class : B
Temperature rise : 80 K
Locked rotor time : 6 s (hot)
Service factor : 1.15
Duty cycle : S1
Ambient temperature : -20°C - +40°C
Altitude : 1000
Degree of Protection : IP55
Approximate weight : 24 lb
Moment of inertia : 0.08044 sq.ft.lb
Noise level : ---

	D.E.	N.D.E.	Load	Power factor	Efficiency (%)
Bearings	6203 ZZ	6202 ZZ	100%	0.65	66.5
Regreasing interval	---	---	75%	0.57	64.0
Grease amount	---	---	50%	0.46	56.0

Notes:

Performed by

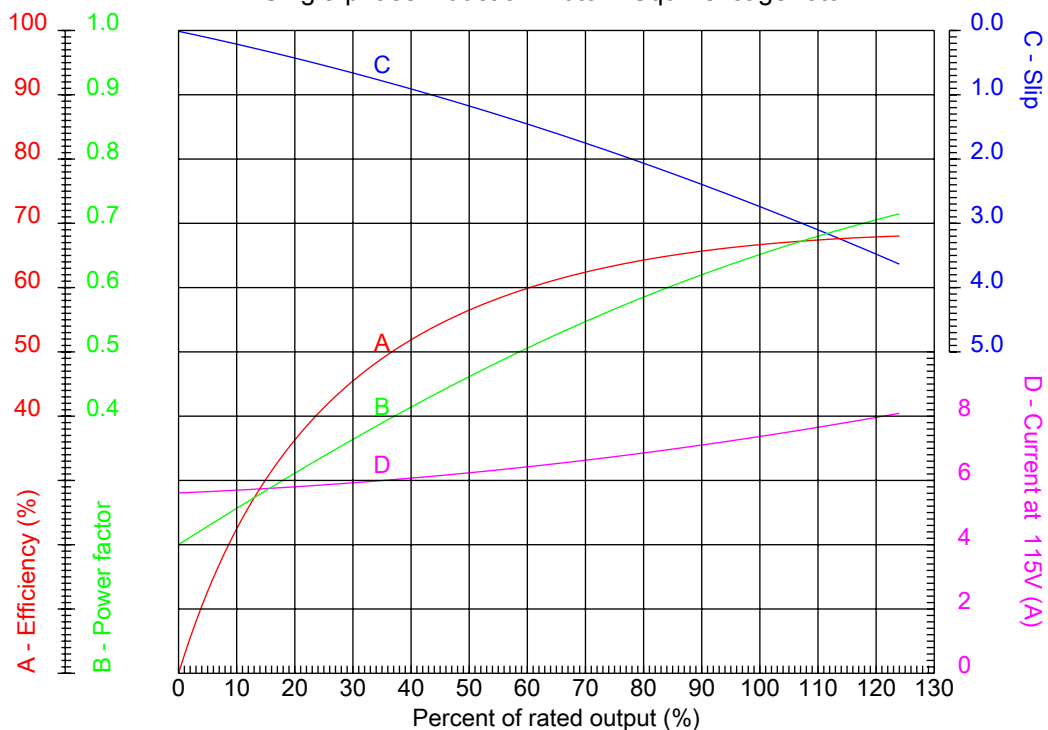
Checked



No.:

Date: 28-DEC-2012

PERFORMANCE CURVES RELATED TO RATED OUTPUT Single-phase induction motor - Squirrel cage rotor



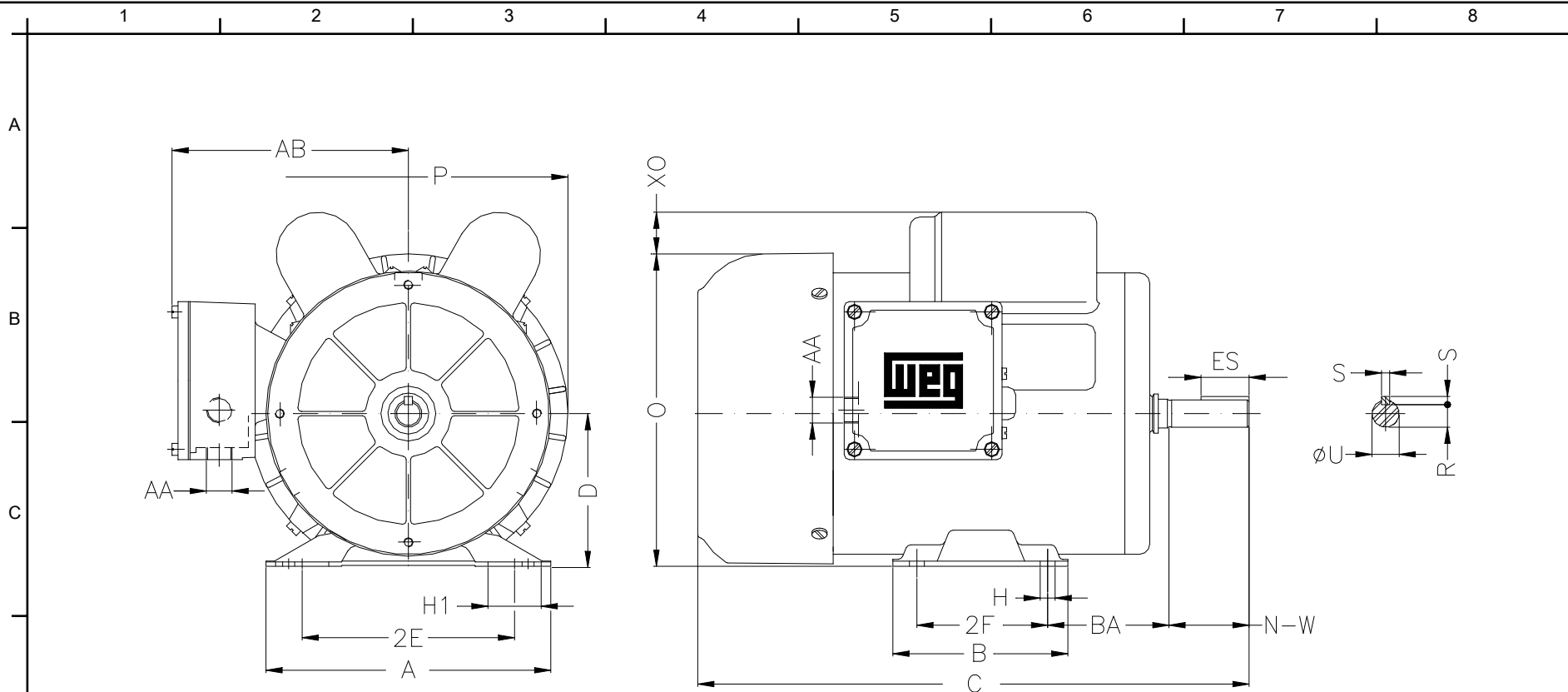
Customer :
Product line : Farm Duty Motors : TEFC (IP55) - Single-Phase

Frame	: B56	Locked rotor current (I _l /I _n)	: 5.8
Output	: 0.5 HP	Duty cycle	: S1
Frequency	: 60 Hz	Service factor	: 1.15
Full load speed	: 1750	Design	: ---
Voltage	: 115/230 V	Locked rotor torque	: 290 %
Rated current	: 7.40/3.70 A	Breakdown torque	: 270 %
Insulation class	: B		

Notes:

Performed by

Checked



Notes:

Performed by:

Checked:

Customer:

Farm Duty Motors : TEFC (IP55) - Single-Phase

2E 4.874	2F 3.000	H 0.342	BA 2.750	A 6.535
B 4.016	C 11.102	D 3.500	J 1.220	O 7.165
P 7.323	ES 1.102	S 0.187	N-W 1.874	U 0.6250
R 0.517	AB 5.433	AA 2XNPT 1/2"	Flange FC-95	AJ 3.748
AK 3.000	BD 6.535	BF UNC 1/4"x20-2B	BB 0.157	BC ---
AH 2.063				

Single-phase induction motor
Frame B56 - IP55

28-DEC-2012

