



No.:

Date: 28-DEC-2012

Customer :

TECHNICAL PROPOSAL

Single-phase induction motor - Squirrel cage rotor

Product line : Compressor Duty : Single-Phase - ODP

Catalog Number : .7536OS1BCDC56

List Price : \$237

Notes:

Performed by:

Checked:



No.:

Date: 28-DEC-2012

DATA SHEET

Single-phase induction motor - Squirrel cage rotor

Customer :
Product line : Compressor Duty : Single-Phase - ODP

Frame : C56
Output : 0.75 HP
Frequency : 60 Hz
Poles : 2
Full load speed : 3400
Slip : 5.56 %
Voltage : 115/208-230 V
Rated current : 9.20/5.00-4.60 A
Locked rotor current : 43.2/21.6 A
Locked rotor current (I_L/I_n) : 4.7
No-load current : 5.20/2.60 A
Full load torque : 1.14 lb.ft
Locked rotor torque : 250 %
Breakdown torque : 190 %
Design : ---
Insulation class : B
Temperature rise : 80 K
Locked rotor time : 6 s (hot)
Service factor : 1.00 (1.00 at 208V)
Duty cycle : COMPRESSOR
Ambient temperature : -20°C - +40°C
Altitude : 1000
Degree of Protection : IP21
Approximate weight : 24 lb
Moment of inertia : 0.02326 sq.ft.lb
Noise level : ---

	D.E.	N.D.E.	Load	Power factor	Efficiency (%)
Bearings	6203 ZZ	6202 ZZ	100%	0.80	66.0
Regreasing interval	---	---	75%	0.72	65.0
Grease amount	---	---	50%	0.61	62.0

Notes:

Performed by

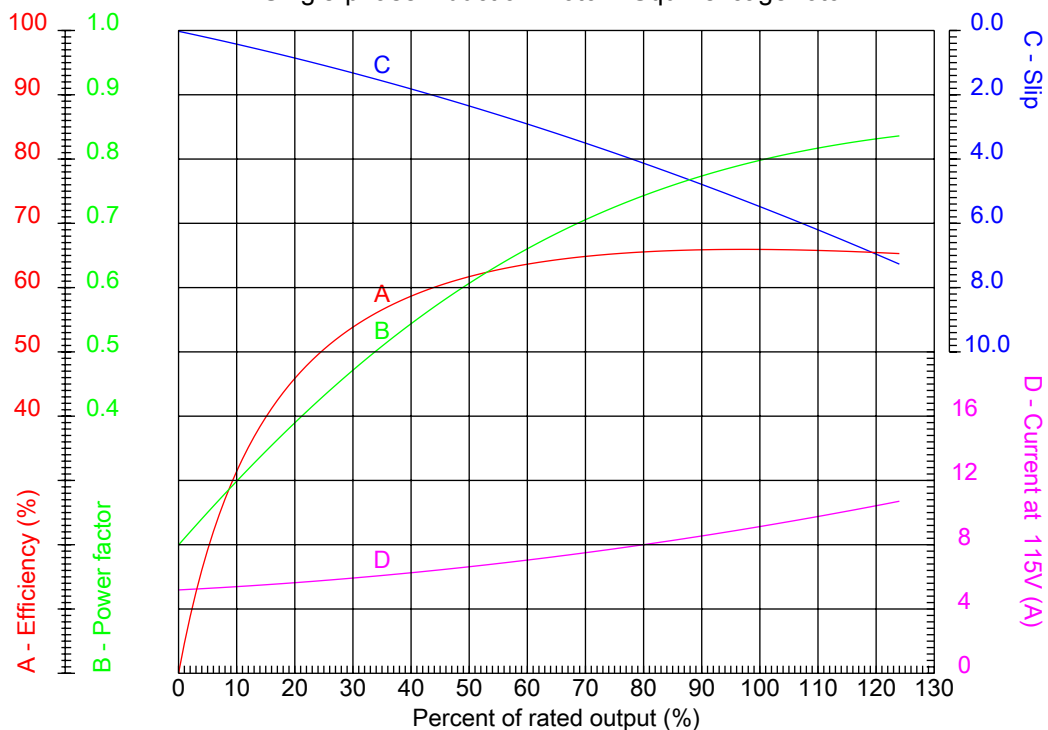
Checked



No.:

Date: 28-DEC-2012

PERFORMANCE CURVES RELATED TO RATED OUTPUT Single-phase induction motor - Squirrel cage rotor



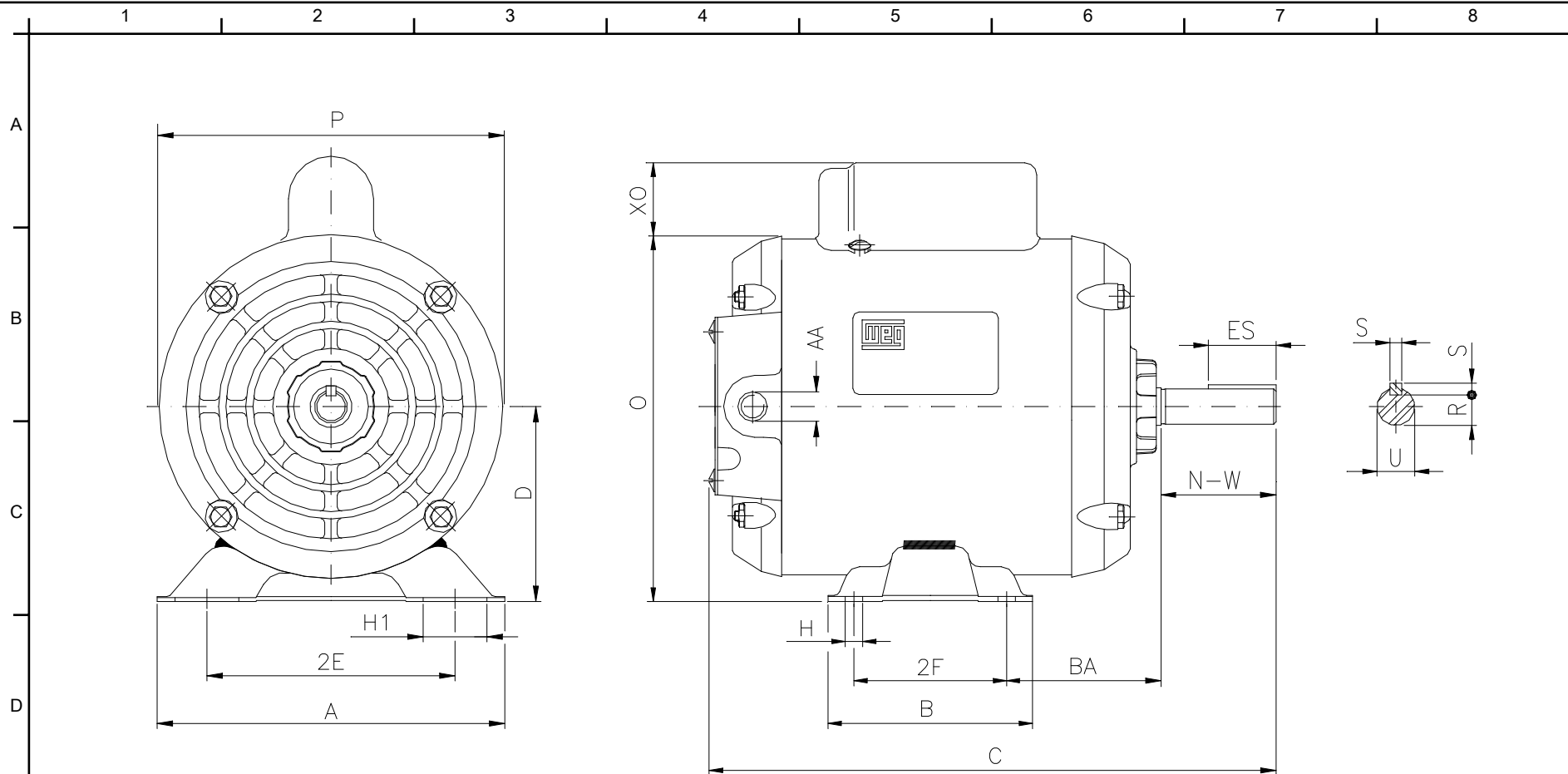
Customer :
Product line : Compressor Duty : Single-Phase - ODP

Frame	: C56	Locked rotor current (I _l /I _n)	: 4.7
Output	: 0.75 HP	Duty cycle	: COMPRESSOR
Frequency	: 60 Hz	Service factor	: 1.00 (1.00 at 208V)
Full load speed	: 3400	Design	: ---
Voltage	: 115/208-230 V	Locked rotor torque	: 250 %
Rated current	: 9.20/5.00-4.60 A	Breakdown torque	: 190 %
Insulation class	: B		

Notes:

Performed by

Checked



Notes:

Performed by:

Checked:

Customer:

2E	2F	H	BA	A
4.874	3.000	0.342	2.748	6.535
B	C	D	J	O
4.016	10.551	3.500	1.220	6.378
P	ES	S	N-W	U
5.709	1.102	0.187	1.874	0.6250
R	AA			
0.517	NPT 1/2"			

Compressor Duty : Single-Phase - ODP

Single-phase induction motor
Frame C56 - IP21

28-DEC-2012

