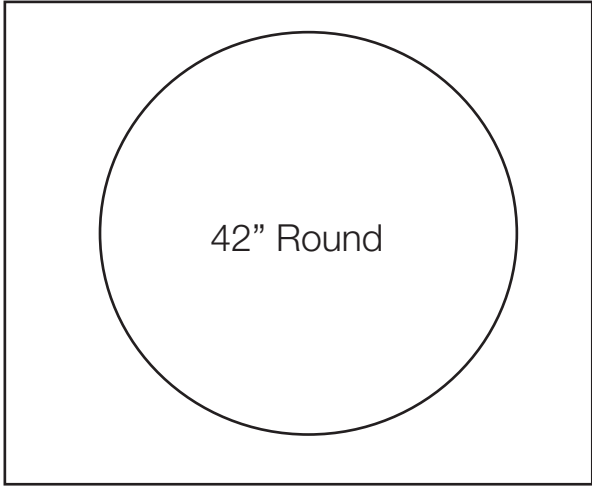




# 42" Round Molded Melamine Tabletop

without umbrella hole



## Product Specifications

Product Description	Reference Number	Color	UPC Code 014306	Weight Each (lbs.)	Master Pack	Master Pack Volume (cu. ft)
42" Round Molded Melamine Tabletop without hole	99881004	White	117027	33.00	1	2.37
	99881025	Granite Green	117041	33.00	1	2.37
	99881002	Tokyo Stone	132419	33.00	1	2.37
	99881058	Catalan	908489	33.00	1	2.37
	99881076	Aged Oak	925721	33.00	1	2.37
	99881418	Wicker	925745	33.00	1	2.37
	99881108	Teak Decor	925752	33.00	1	2.37
	99881246	Barn White	921730	33.00	1	2.37
	99881471	White Oak	925738	33.00	1	2.37
	99881151	Lava	925769	33.00	1	2.37

## Features & Benefits Warranty: 2 Yrs.

- Trendy marble, granite finish, textured or deco tops to complement all Grosfillex chairs.
- Hard, smooth molded tabletop made of a molded wood/resin body with a fusion bonded melamine top.
- Stain, burn, scratch, and fade resistant.
- Use Grosfillex's wide 4-prong central resin pedestal base 2000, resin y-leg base, or bar height tulip table base with anti-skid glides for stability.
- Large 1 1/2" umbrella hole with protective resin fitting and cap.
- Cleans easily with soap and water.
- Specifically designed and engineered for fine dining in hospitality environments.
- Customize designs by mixing and matching tabletops and bases.
- Top and Base sold separately.



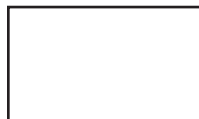
Barn White



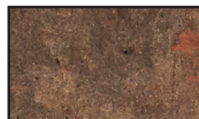
Teak Decor



White Oak



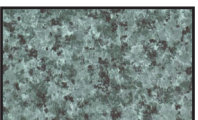
White



Lava



Aged Oak



Granite Green



Tokyo Stone



Catalan



Wicker

