

Ingersoll Rand

Reciprocating Single- and Two-stage Air Compressors
2-25 hp

Innovation

Reliability

Efficiency



Legendary Performance

For more than a century, Ingersoll Rand has inspired progress by driving innovation through revolutionary technology and talented people.

It's a legacy of creating new standards for how the world gets work done. We're the technology leader in compressed air not only because we develop best-in-class products, but also because we stand behind our customers in all aspects of what we do. No matter what your product, process or location, Ingersoll Rand has the expertise, the technology and the unmatched service to meet your needs.

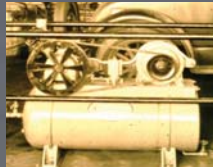


INGERSOLL-RAND

T-30 Legendary Performance > > >

1929

Initial production model of Type-30 design with vertical cooling fins; combination of concave and convex tank heads.



1950s

Updraft air cleaner added.



1970s

First units from Campbellsville, KY plant establish a new reputation for workmanship and service.



1872

Ingersoll Rand tradition begins with its first reciprocating air compressor.



1940s

Design enhanced with large U-frame motor and improved piping.



1960s

Modern Type-30 design emerges with horizontal cooling fans, smaller T-frame motor, convex tank heads, fully-welded construction and drive-belt guards.



Providing Customer-driven Compressor Solutions

When you've been delivering reliable reciprocating compressor results for more than 100 years, it's natural that your corporate culture supports a strong tradition of evolutionary enhancements. Every new generation of employees builds on the experience and insights of their mentors. Today's legendary Ingersoll Rand air compressors started with an original rock-solid design and have steadily improved with added control and performance upgrades over the years.

They are world-renowned for their impressive legacy of long-life performance, ease of service and evolutionary design enhancements.

Efficient. Reliable. Built to last.

Ingersoll Rand has sold millions of reciprocating compressors worldwide.

Ingersoll Rand



1990s

Fully packaged units with E-series starters and CSA package certification are introduced.



2002

Compact single-stage compressors introduced.



2006

Fully packaged model with aftercooler, automatic tank drain, and low-oil-level shutdown is top choice for round-the-clock applications.



1980s

First blue-colored units feature new enhancements.



2000

Premier Series packaging adds dual controls, deluxe starter, and liquid-filled pressure gauge.



2003

Pressure-lubricated model with industrial-grade two-stage air cleaner added.



Efficiency, Reliability, Built to Last

Time-tested design and enhancements establish Ingersoll Rand single and two-stage reciprocating compressors as the benchmark for:

Efficiency and Reliability

With a proven design and stellar track record, the Ingersoll Rand reciprocating compressor family has earned worldwide recognition for reliable, trustworthy performance that saves money and enhances business success through:

- Lower life-cycle costs
- An ability to thrive in punishing applications
- Optimum solutions for greater efficiency
- Configurations that meet varying needs

Built to Last

Due to the laws of physics, there are certain aspects of reciprocating compressor design, construction and performance that have never changed – like cast-iron durability, copper-finned cooling coils, reliable splash lubrication and easy maintenance. That's where Ingersoll Rand's design and operating experience really pays off in terms of long-term productivity and return on investment. Ask any one of the millions of active Ingersoll Rand reciprocating compressor users around the world.

Serviceability

Ingersoll Rand designed the reciprocating compressors to last a lifetime – thanks to quick, easy maintenance with renewable components. Easy access to the pump components allows for quick routine maintenance and replacement of parts like the stainless steel valve, individually cast cylinders, piston rings and gaskets, and long-life bearings. This key serviceability aspect extends the life of the compressor and lets you amortize your initial capital cost over a much longer equipment life span for a superior payback on your investment.



The Ideal Design for Applications Where Air is Taken for Granted

Innovation

For more than 100 years, Ingersoll Rand has maintained the delicate balance between known performance and new developments by keeping the best features and upgrading others as new technology becomes available. The result is higher efficiency for today's energy-conscious world and enhanced value for the extended life of your investment.

Customer-driven Solutions

Another residual benefit of compressor longevity is our cumulative experience with how different users prefer, need and operate their compressors. Years of experience in the reciprocating compressor business and servicing a variety of users have taught us what is most important to compressor users. And that means more choices for you to satisfy your specific needs.

Your choices range from the size of the units and the sophistication of the features to popular packaged solutions. There are even gas-powered packages perfect for field service, fleet maintenance, remote pneumatic applications or emergency back-up needs.



Ingersoll Rand single- and two-stage reciprocating air compressors are an ideal choice for applications that demand a reliable air supply for everyday use, but where running an air compressor ranks a distant second to running your business.

- Automotive Shops
- Light Manufacturing
- Construction
- Commercial Applications
- Fabrication
- Pneumatic Equipment
- Processing Lines

Single-stage Air Compressor

Configured in space-saving stationary and portable models, these durable compressors are a favorite with DIY homeowners and in the construction industry.

Key features include:

- Industry-leading 5,000-8,000 hour design life
- Industrial-quality cast iron construction
- Fully-balanced crankshaft that reduces vibration
- 135 psi max. discharge pressure
- Honda engine-driven wheel barrow compressor



Two-stage Gas-powered Air Compressors

Ingersoll Rand's two-stage gasoline engine driven air compressors are designed to provide compressed air where electric power is not readily available. They're used in fleet and field service applications, remote pneumatic applications and emergency production lines.

- Available with easy-starting Honda, or Kohler engines
- Fuel-efficient idle control
- Advanced safety features including low oil level shutdown for gas engines



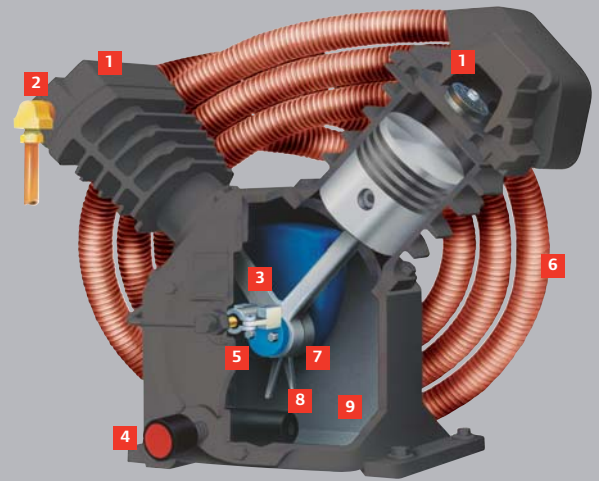
Electric-Driven Duplex Air Compressors

Ingersoll Rand duplex reciprocating air compressors offer two individual compressor pumps and two motors mounted on a single tank, providing 100% built-in backup or additional air power for those larger capacity jobs. Includes the legendary T30 pump with value added features in a space saving design ideally suited for tight spaces.

- Durable cast iron design for 100% continuous duty application
- Automatic duplexing or alternating of compressors
- Individually cast cylinders, overhung crankshaft and one piece connecting rod for ease of maintenance
- 175 psig maximum operating pressure



Why Ingersoll Rand Pumps Are Better... Excellence in Design!



- 1 Two-stage Design:** Delivers pressures up to 175 psig
- 2 Radial Fins for Maximum Cooling:** Even 360° cooling of barrel cylinders eliminates hot spots
- 3 One-piece Connecting Rod:** Fewer wearing parts
- 4 Low Oil Level Switch:** Provides constant protection
- 5 Centrifugal Unloader:** Ensures loadless starts, for maximum starter protection
- 6 Integral Fan Blade/Finned Copper Intercooler:** Runs cooler, even in the most demanding conditions
- 7 Overhung Crankshaft:** Precision balanced to run smoothly and quietly; simplifies maintenance and wear-sleeve replacement
- 8 Splash Lubrication:** Simple and reliable.
- 9 100% Cast Iron:** Designed for a lifetime



Ingersoll Rand Industrial Technologies provides products, services and solutions that enhance our customers' energy efficiency, productivity and operations. Our diverse and innovative products range from complete compressed air systems, tools and pumps to material and fluid handling systems and environmentally friendly microturbines. We also enhance productivity through solutions created by Club Car®, the global leader in golf and utility vehicles for businesses and individuals.

www.ingersollrandproducts.com

Distributed by:



Ingersoll Rand compressors are not designed, intended or approved for breathing air applications. Ingersoll Rand does not approve specialized equipment for breathing air applications and assumes no responsibility or liability for compressors used for breathing air service.

Nothing contained on these pages is intended to extend any warranty or representation, expressed or implied, regarding the product described herein. Any such warranties or other terms and conditions of sale of products shall be in accordance with Ingersoll Rand's standard terms and conditions of sale for such products, which are available upon request.

Product improvement is a continuing goal at Ingersoll Rand. Designs and specifications are subject to change without notice or obligation.

