

FEATURES & SPECIFICATIONS

INTENDED USE

Ideal for a wide variety of low- to medium-height ceiling applications including commercial, retail and hospitality spaces where an open, baffle or wet lens fixture is required.

OPTICAL SYSTEM

Aluminum full reflectors are optically designed to maximize lumen output and to provide superior glare control. The black baffled reflector has a semi-specular upper finish with a white painted flange standard.

Fresnel glass lens provides optimal visual comfort and improved aesthetics.

MECHANICAL SYSTEM

Galvanized steel mounting frame with mechanical trim retention (clips) ensures secure and flush reflector mounting to ceiling. Mounting frame has cutout section for remodel applications when installation from below is necessary.

Galvanized bar hangers span up to 24" o.c. and feature built-in T-bar clips and nailers for T-bar or wood joist installation.

Frames equipped with galvanized junction box UL Listed for through wire applications.

Maximum 1-1/2" ceiling thickness.

ELECTRICAL SYSTEM

Durable medium-base porcelain socket with nickel-plated copper alloy screw shell and contact. Integral thermal protector provides protection against improper use of insulation materials.

Rated for No. 12 AWG conductor thru-branch wiring. Minimum 90° supply wire.

Ground wire provided.

LISTING

Fixtures are UL Listed for thru-branch wiring, Non-IC recessed mounting, damp location, and to U.S. and Canadian Safety Standards.

WARRANTY

Fixtures, including ballasts, are covered by Lithonia Lighting 24-month warranty against mechanical defects in manufacture.

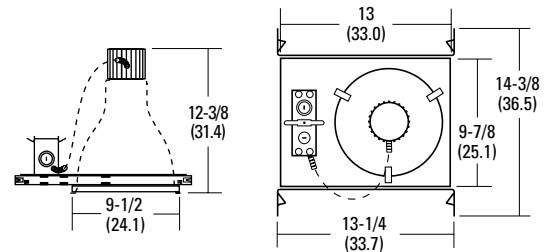
Catalog Number
Notes
Type

Contractor Select Incandescent Downlighting

8" Light Commercial



8VI



Specifications

Max. height: 12-3/8 (31.4)

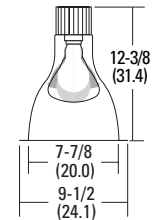
Ceiling opening: 8-7/8 (22.5)

Overlap trim: 9-1/2 (24.1)

Length: 13-1/4 (33.7)

Width: 14-3/8 (36.5)

All dimensions are inches (centimeters).



ORDERING INFORMATION

Catalog Number	UPC	Description	Lamp Type	Wattage	Voltage	Pallet Qty.	Standard Carton Qty.
Frame-in							
8VI	745976724191	8" vertical frame-in	Incandescent	See trims	120	60	1
Reflector							
802A	784231152928	Vertical, diffuse, 8" reflector	—	—	—	80	1
8B3	784231152508	Vertical, black baffle, 8" reflector	—	—	—	64	1
8L4	784231162569	Vertical, fresnel, 8" lens	—	—	—	64	1

8" 8VI Vertical – A23, PS25, PAR38 or BR40, Open
