

FEATURES & SPECIFICATIONS

INTENDED USE — Designed for use in open area applications and electronic offices where optical control, visual comfort and light cut-off are important.

ATTRIBUTES — Design optimized for use with T8 lamps and low-profile electronic ballasts.

Aluminum louvers utilize the latest developments in louver finishing for minimized louver iridescence.

CONSTRUCTION — Black reveal provides floating louver appearance, conceals optional air-supply slots.

Square corner end plates improve strength and durability.

Integral T-bar safety clips hold fixture to T-bar securely; no fasteners required.

Heavy-gauge hinges die-formed for maximum strength; spring action latches concealed in black reveal.

Housing formed from cold-rolled steel. Louver formed from anodized aluminum. No asbestos used in this product.

FINISH — Five-stage iron-phosphate pretreatment ensures superior paint adhesion. Painted parts finished with high-gloss, baked white enamel.

ELECTRICAL SYSTEM — Thermally-protected, resetting, Class P, HPF, non-PCB, UL Listed, CSA certified ballast is standard.

Electronic ballasts are sound rated A. NEMA Premium®/CEE qualified ballast. Full light output, reduced energy. Less than 10% THD multi-volt operation (120-277).

Fixture conforms to UL1570 and is suitable for damp locations. AWM, TFN or THHN wire used throughout, rated for required temperatures.

MVOLT ballasts are NEMA Premium/CEE qualified ballasts. Full light output - reduced energy.

Less than 10% THD. Multi-volt operation, 120-277V.

120V ballasts are ENERGY STAR® qualified FCC Class B for residential and commercial applications. Less than 10% THD. Quieter applications.

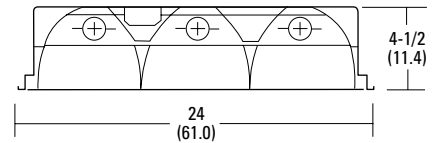
LISTING — UL Listed (Standard), CSA Certified or NOM Certified (see Options).

WARRANTY — Fixtures, including ballasts, are covered by Lithonia Lighting 24-month warranty against defects in manufacture.

Catalog Number
Notes
Type

Contractor Select

Parabolics



Specifications PT2U 2x2: 9-cell

Specifications PT3 2x4: 18-cell

Length: 24 (61.0)

Length: 48 (122.0)

Width: 24 (61.0)

Width: 24 (61.0)

Depth: 4-1/2 (11.4)

Depth: 4-1/2 (11.4)

Weight: 32 lbs (14.5 kg)

Weight: 32 lbs (14.5 kg)

All dimensions are inches (centimeters).

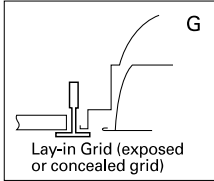
ORDERING INFORMATION

Catalog Number	UPC	Description	# of Lamps	# of Cells	Wattage	Voltage	Ballast type	# of Ballasts	Lamp type	Pre-wired	Lamp Included	Pallet Qty.
PT3 MV	745975079155	2x4 recessed, static	3	18	32	120-277	NEMA Premium, instant start	1	N/A	N	N	20
PT3L MV	745975079421	2x4 recessed, static	3	18	32	120-277	NEMA Premium, instant start	1	700 series, 3500K	N	Y	20
PT3LW MV	745975079360	2x4 recessed, static	3	18	32	120-277	NEMA Premium, instant start	1	700 series, 3500K	Y	Y	20
PT3 2MV	745975118373	2x4 recessed, static	3	18	32	120-277	NEMA Premium, instant start	2	N/A	N	N	20
PT3A MV	745975079513	2x4 recessed, air	3	18	32	120-277	NEMA Premium, instant start	1	N/A	N	N	20
PT2U MV	745975079247	2x2 recessed, static	2	9	32-U lamp	120-277	NEMA Premium, instant start	1	N/A	N	N	40

Parabolics 2'x4' and 2'x2'

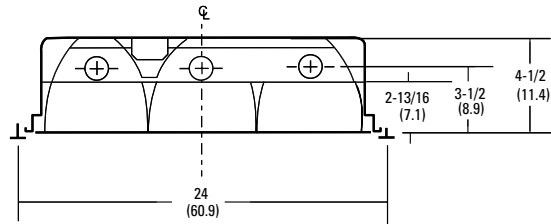
MOUNTING DATA

Ceiling Type	Appropriate Trim Type
Exposed grid tee	G
Concealed grid tee	G, ST



DIMENSIONS

All dimensions are inches (centimeters).



PHOTOMETRICS

Calculated using the zonal cavity method in accordance with IESNA LM41 procedures. Floor reflectances are 20%. Lamp configurations shown are typical. Full photometric data on these and other configurations available upon request.

TEST NO: LTL14671 CS

PT3 MV

LUMENS PER LAMP: 2850 LUM. EFF. - 75.1%

LAMPS PER LUMINAIRE: 3

RCR	Coefficients of Utilization								
	80%			70%			50%		
	50%	30%	10%	50%	30%	10%	50%	30%	10%
0	89	89	89	87	87	87	83	83	83
1	80	78	75	79	76	74	76	74	72
2	71	67	63	70	66	63	67	64	61
3	64	58	54	62	57	53	60	56	53
4	57	51	46	56	50	46	54	49	45
5	51	45	40	50	44	40	49	44	40
6	46	40	35	45	39	35	44	39	35
7	42	36	31	41	35	31	40	35	31
8	38	32	28	38	32	28	37	31	28
9	35	29	25	34	29	25	34	28	25
10	32	26	23	32	26	23	31	26	22

Zonal Lumen Summary

Zone	Lumens	% Lamp	% Fixture
0° - 30°	1982.1	23.2	30.9
0° - 40°	3413.2	39.9	53.1
0° - 60°	5866.8	68.6	91.4
0° - 90°	6422.1	75.1	100.0
90° - 180°	0.0	0.0	0.0
0° - 180°	6422.1	75.1	100.0