

FEATURES & SPECIFICATIONS

INTENDED USE

For applications that require the clean appearance of a flat-bottom diffuser. Provides high light levels for storage rooms, offices or retail applications. **Certain airborne contaminants can diminish integrity of acrylic.** [Click here for Acrylic Environmental Compatibility table for suitable uses.](#)

ATTRIBUTES

Linear side prisms control brightness, pyramidal bottom prisms minimize lamp image. Diffuser hinges open from either side for easy maintenance. Full depth, white enamel end plates.

CONSTRUCTION

Die-formed from code gauge cold-rolled steel. Channel cover snaps into place without the use of tools. Full end cap factory installed to reduce job site labor. Diffuser is extruded clear acrylic.

FINISH

Five-stage iron-phosphate pretreatment ensures superior paint adhesion and rust resistance. Finished with high-gloss, baked white enamel.

ELECTRICAL SYSTEM

Thermally protected, resetting, Class P, HPF, UL listed, CSA Certified ballast is standard. Energy saving and electronic ballasts are sound rated A.

Luminaire is suitable for damp locations. AWM, TFN or THHN wire used throughout, rated for required temperatures.

INSTALLATION

For surface or stem mounting, individual or row installation.

LISTING

UL Listed (standard). Optional: CSA or cUL. Mexico NOM.

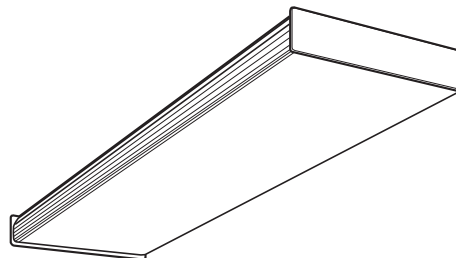
WARRANTY

Guaranteed for one year against mechanical defects in manufacture.

Catalog Number	
Notes	Type

Square-Basket Wraparound

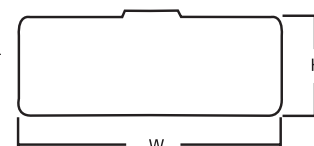
SB



WIDE BODY
4' length
2 or 4 lamps

Specifications

Length: 48" (1219)
Width: 13-3/4" (349)
Height: 2-7/8" (73)



All dimensions are inches (millimeters) . Specifications subject to change without notice.

ORDERING INFORMATION

For shortest lead times, configure product using **standard options (shown in bold)**.

Example: SB 4 32 MVOLT GEB10IS

Series/No. lamps ¹	Lamp type	Voltage	Options
SB 4 4 lamps, 13-3/4" wide	32 32W T8 (48")	120	Shipped installed in fixture 1/4 One 4-lamp ballast (32W, electronic ballast only) GEB10IS T8 electronic ballast, ≤10 THD, instant start GEB10PS T8 electronic ballast, ≤10% THD, program start EL Emergency battery pack (nominal 300 lumens, see Life Safety section) EL14 Emergency battery pack (nominal 1200 lumens, see Life Safety section) GLR Internal fast-blow fusing ³ GMF Internal slow-blow fusing ³ RIF1 Radio interference filter (1 per fixture) LSC Lens safety clips (2 per fixture) RE 120V residential electronic ballast ⁴ CSA Listed and labeled to comply with Canadian standards NOM NOM Certified SSR Specular silver interior finish (95% reflective) BDP Ballast disconnect plug (meets codes that require in-fixture disconnect)
2SB 2 2 lamps, 13-3/4" wide		277	
		347	
		MVOLT²	

NOTES:

- Lamps not included.
- Electronic ballast 120 through 277V only.
- Must specify voltage, 120V or 277V.
- Must specify voltage, 120V.

Accessories (Order as separate catalog number.)

- SQ_ Swivel stem hanger (specify length in 2" increments)
- 1B Ceiling spacer (1-1/2" to 2-1/2" from ceiling).

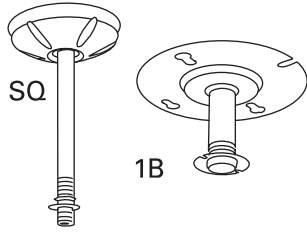
SB Square Basket Wraparound, Wide Body

MOUNTING DATA

For unit or row installation. Surface or stem mounting.

UNIT INSTALLATION — Minimum of two hangers required.

ROW INSTALLATION — One hanger per fixture plus one per row required.



A = 1/4 x 1/2 (64 x 13) Oval Hole

B = 1/4 x 1/2 (64 x 13) K.O.

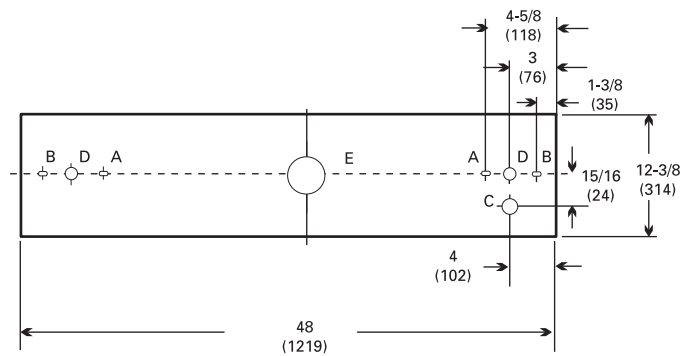
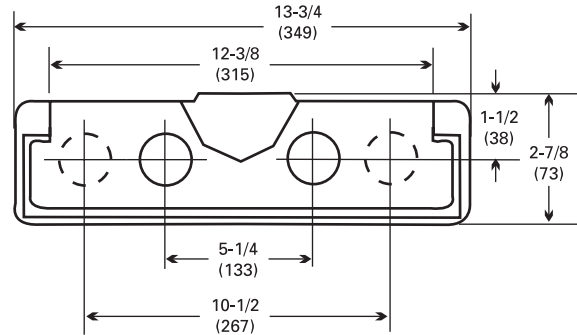
C = 7/8 (22) Dia.K.O.

D = 11/16 (17) Dia. K.O.

E = 2 (51) Dia. K.O.

DIMENSIONS

All dimensions are inches (millimeters). Specifications subject to change without notice.



PHOTOMETRICS

Calculated using the zonal cavity method in accordance with IESNA LM41 procedure. Floor reflectances are 20%. Lamp configurations shown are typical. All data based on 25°C. Full photometric data on these and other configurations available upon request.

SB 4 32

Report LTL 5659 – Lumens per lamp = 2900

S/MH (along) 1.2 (across) 1.3

Coefficient of Utilization

Ceiling Wall	80%			70%			50%			0%
	70%	50%	30%	70%	50%	30%	50%	30%	10%	0%
0	83	83	83	81	81	81	76	76	76	65
1	77	73	71	74	71	69	67	65	63	55
2	70	65	61	68	63	59	60	56	54	48
3	65	58	53	63	56	52	54	49	46	41
4	60	52	46	58	51	45	48	44	40	36
5	55	46	40	53	45	40	43	38	34	31
6	51	42	36	49	41	35	39	34	30	27
7	47	38	32	45	37	31	35	30	27	24
8	43	34	28	42	33	28	32	27	23	21
9	40	30	25	38	30	24	28	24	20	18
10	37	28	22	36	27	22	26	21	18	16

Zonal Lumens Summary

Zone	Lumens	%Lamp	%Fixture
0-30	2289	19.7	27.7
0-40	3753	32.4	45.4
0-60	6182	53.3	74.7
0-90	7541	65.0	91.1
90-180	733	6.3	8.9
0-180	8275	71.3	100.0



An AcuityBrands Company