

## FEATURES & SPECIFICATIONS

**INTENDED USE** — The industry's next generation in linear direct fluorescent products. This new compact, low-profile design offers our customers unique product features which improve the overall installation process and appearance while reducing labor cost, making it the most versatile solution for commercial, retail, manufacturing, warehouse, and cove and display applications.

**ATTRIBUTES** — Designed to accommodate a wide variety of T8 lamp lengths. Channel offers the gripper back feature which strengthens the overall construction and allows for the use of the new Z spring hanger (see back). Newly designed, patent-pending channel cover offers a secure fit design, allowing for easy access and quick attachment without pinching wires.

**CONSTRUCTION** — Constructed to comply with New York City electric code. Made in USA.

Compact designed channel and cover are formed from code-gauge cold-rolled steel. Innovative T8 two-lamp back plate offers compact design and additional socket protection. Locking lamp holder tracks bolster strength of the overall strip construction while creating improved lamp stability. Design includes T8 socket, features rotating collar and enclosed contacts.

**FINISH** — High-gloss, baked white enamel finish (white standard). Five-stage iron-phosphate pretreatment ensures superior paint adhesion and rust resistance. Other channel paint finish options: black (MB), smoke gray (SMG) and galvanized (GALV).

**OPTICAL** — Reflector options include solid designs in both symmetric and asymmetric configurations. Consult factory for different-apertured versions.

**ELECTRICAL SYSTEM** — Thermally protected, resetting, Class P, HPF, non-PCB, UL listed.

Suitable for damp locations. Awn, TFN or THHN wire used throughout, rated for required temperatures.

**INSTALLATION** — Patented-pending "three-point" row connector locks channel together for straighter and faster row mounting; included as standard. Ideal for surface-mount or suspended.

**LISTING** — UL Listed, CUL Listed or CSA Certified to Canadian Standards.

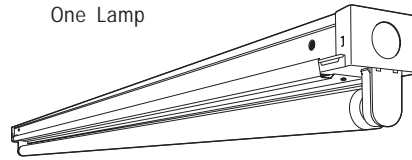
**WARRANTY** — Guaranteed for one year against mechanical defects in manufacture.

Catalog Number	
Notes	Type

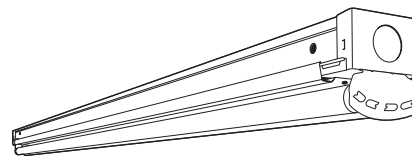


Compact T8 Striplight

# Z NY



One Lamp



Two Lamps

Linear Lamps  
1 or 2 Lamps

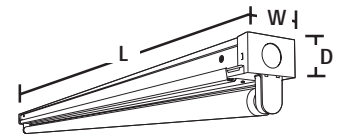
### Specifications

Length: 18 (45.7), 24 (61.0)  
36 (91.4), 48 (121.9)  
72 (182.9) or 96 (243.8)

Width: 2-1/8 (5.4)

Depth: 1-1/2 (3.8)

All dimensions are inches (millimeters).



## ORDERING INFORMATION

For shortest lead times, configure product using **standard options (shown in bold)**.

Example: Z 1 32 MVOLT GEB10IS

Series	Number of lamps	Lamp type	Voltage	Options
<b>Z Compact strip<sup>1</sup></b>	<b>1</b>	17 17W T8 (24")	120	<b>GEB10IS T8 electronic ballast, ≤ 10% THD, instant start (T8 only)</b>
	<b>2</b>	25 25W T8 (36")	277	GEB10RS T8 electronic ballast, ≤ 10% THD, rapid start
For tandem double-length unit, add prefix T. Example: TZ	Not included	<b>32 32W T8 (48")</b>	347	BILP High-efficiency .78 bf (low)
			<b>MVOLT</b>	GLR Internal fast-blow fuse (add X for external)
			Others available	GMF Internal slow-blow fuse (add X for external)
				PLF___ Plug in wiring, specify number of branch circuits and hot wires (A-black, B-Red, C-Blue, AB or AC)
				EL55 Emergency battery pack (nominal 390-700 lumens); consult factory for additional battery packs <sup>2,3</sup>
				EL65 Emergency battery pack (nominal 725-1325 lumens)
				CSA CSA Certified
				NOM NOM Certified
				<b>NY I.B.E.W. union made, NYC code compliant</b>

### Accessories

Order as separate catalog numbers.

- SQ\_ Swivel-stem hanger (specify length in 2" increments)
- ZSPRG Tong and T-grid hanger
- Z8SMR48 Symmetric reflector, 4' white
- Z8ASR48 Asymmetric reflector, 4' white
- Z8SMR36 Symmetric reflector, 3' white
- Z8ASR36 Asymmetric reflector, 3' white
- Z8SMR24 Symmetric reflector, 2' white
- Z8ASR24 Asymmetric reflector, 2' white
- WGZ48 4' wireguard, white
- WGZ8SMR48 4' wireguard, white, for symmetric reflector
- WGZ8ASR48 4' wireguard, white, for asymmetric reflector
- MS5ACF\_ Adjustable aircraft cable system with power feed (specify length as 36, 72 or 108 inches)
- MS5AC\_ Adjustable aircraft cable system (specify 36, 72 or 108 inches)

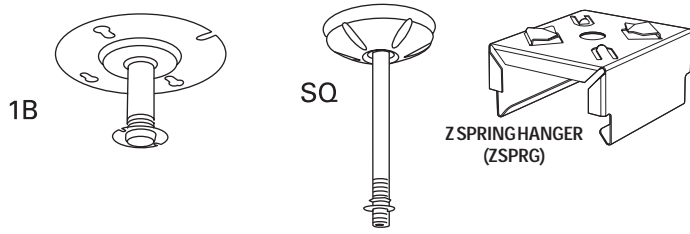
### NOTES:

- 1 Order two 48" for 8' fixtures.
- 2 Specify voltage (available 120/277V).
- 3 Not available with CSA Certified.

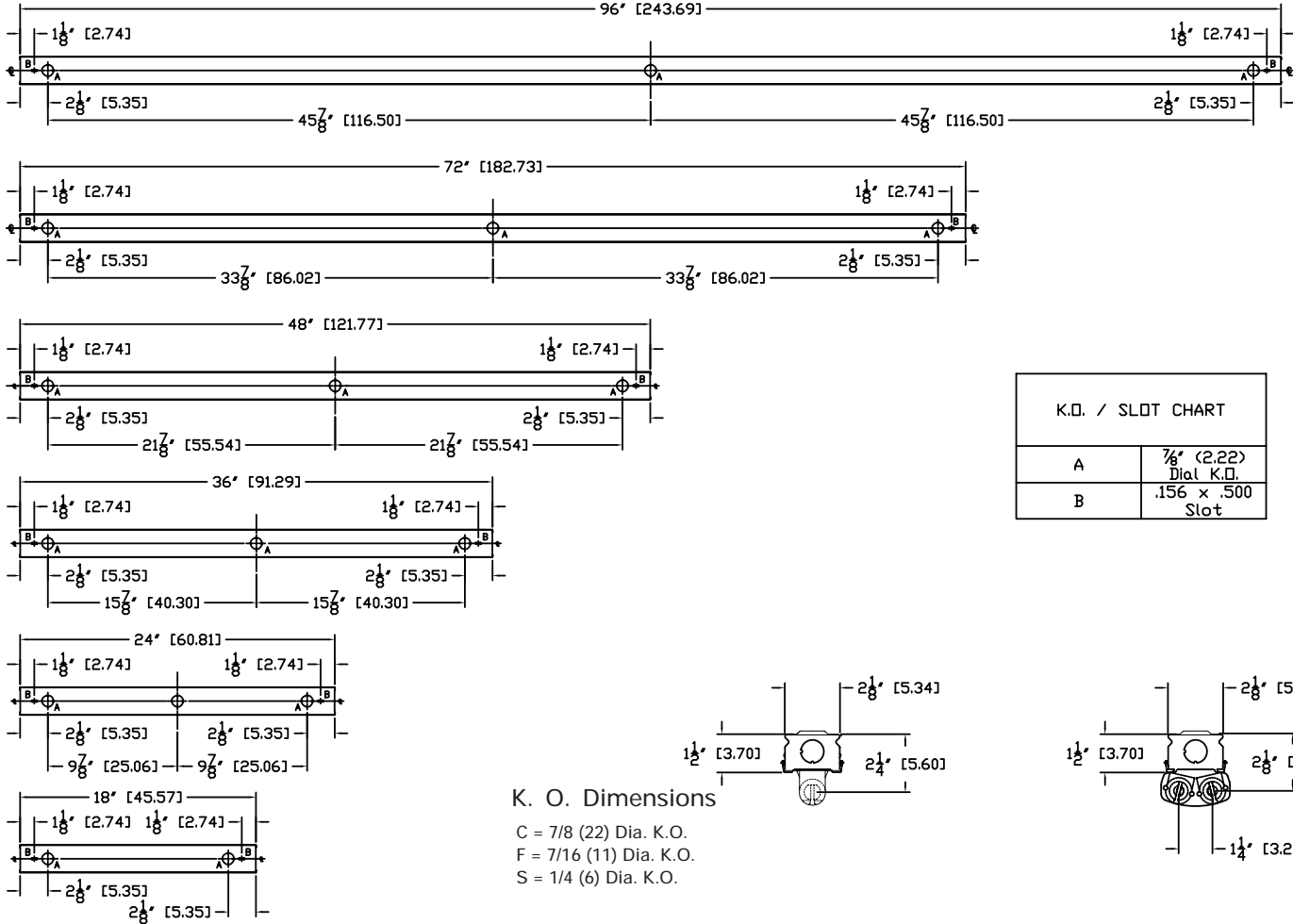
# Z Compact Striplight

## MOUNTING DATA

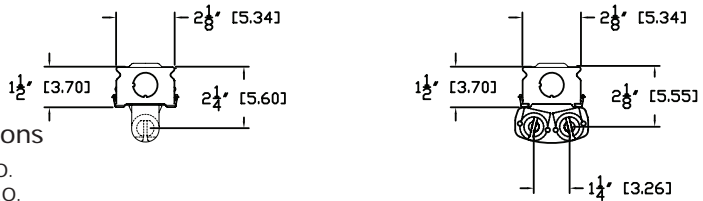
For unit or row installation, surface or stem mounting.  
 Unit installation — Minimum of two hangers required.  
 Row installation — One hanger per channel plus one per row required.



## DIMENSIONS



K.O. / SLOT CHART	
A	7/8" (2.22) Dial K.O.
B	.156 x .500 Slot



**K. O. Dimensions**  
 C = 7/8 (22) Dia. K.O.  
 F = 7/16 (11) Dia. K.O.  
 S = 1/4 (6) Dia. K.O.

## PHOTOMETRICS

Calculated using the zonal cavity method in accordance with IESNA LM41 procedure. Floor reflectances are 20%. Lamp configurations shown are typical. Full photometric data on these and other configurations available upon request.

TEST NO: LTL17128  
 LUMINAIRE CATALOG NO.: Z 1 32 MVOLT GEB10IS  
 LUMENS PER LAMP: 2800

pf	Coefficients of Utilization								
	80%			20%			50%		
	50%	30%	10%	50%	30%	10%	50%	30%	10%
pc	107	107	107	102	102	102	92	92	92
0	87	82	77	83	78	74	75	71	68
1	74	66	60	70	63	57	63	58	53
2	64	55	48	61	53	46	55	48	43
3	56	47	40	53	45	38	48	41	35
4	49	40	33	47	39	32	42	35	30
5	44	35	29	42	34	28	38	31	26
6	40	31	25	38	30	24	34	27	22
7	36	28	22	34	27	21	31	25	20
8	33	25	19	31	24	19	29	22	18
9	30	22	17	29	22	17	26	20	16
10									

Zonal Lumen Summary

Zone	Lumens	% Lamp	% Fixture
0° - 30°	356.4	12.7	13.5
0° - 40°	603.9	21.6	22.9
0° - 60°	1198.3	42.8	45.5
0° - 90°	2029.3	72.5	77.1
90° - 180°	602.8	21.5	22.9
0° - 180°	2632.0	94.0	100.0

TEST NO: LTL17130  
 LUMINAIRE CATALOG NO.: Z 2 32 MVOLT GEB10IS  
 LUMENS PER LAMP: 2800

pf	Coefficients of Utilization								
	80%			20%			50%		
	50%	30%	10%	50%	30%	10%	50%	30%	10%
pc	100	100	100	95	95	95	86	86	86
0	84	79	75	79	75	71	72	68	65
1	71	64	59	68	62	56	61	56	52
2	62	54	47	59	51	46	53	47	42
3	54	46	39	51	44	38	46	40	35
4	48	39	33	46	38	32	41	35	30
5	43	34	29	41	33	28	37	30	26
6	38	30	25	37	29	24	33	27	22
7	35	27	22	33	26	21	30	24	20
8	32	24	19	30	24	19	28	22	18
9	29	22	17	28	21	17	26	20	16
10									

Zonal Lumen Summary

Zone	Lumens	% Lamp	% Fixture
0° - 30°	723.3	12.9	14.6
0° - 40°	1230.3	22.0	24.8
0° - 60°	2402.0	42.9	48.4
0° - 90°	3748.6	66.9	75.5
90° - 180°	1215.1	21.7	24.5
0° - 180°	4963.7	88.6	100.0